



High Halstow TIMES

Home of the Heron



February 2016



Royal Birthday Celebration Village Event

The Parish Council is being asked to consider running an event for the Village as part of the national celebrations of the 90th Birthday of Her Majesty the Queen in June of this year.

If you or the organisation you represent are interested in being part of this event please come along to the Village Hall on Wednesday 3rd February at 7:30pm.

Following this meeting the Parish Council will discuss this at the next Parish Council meeting on 10th February.

Please let us have your thoughts.

HH Parish Council

Come and Meet Your Parish Councillors

Chris(tine) Watson and Gary Jerreat, two of your Parish Councillors, will be at Kings Kitchen in the Memorial Hall on: Tuesday 9th February 2016 from 10.30 – 12.00pm



and every 2nd Tuesday in the month.

Come and tell us your problems or find out about projects we are undertaking.

If we can't answer your questions there and then we will get back to you.

High Halstow Parish Council.

Dog Walkers

Our rights of way and green spaces are for us all to enjoy. Please be aware that if you are exercising your dog it should be under control at all times, and it is your responsibility to clear up it's mess afterwards.

WI Update

Well Christmas is now just a memory and so to plans for the coming year. We are holding a District event in the Recreation Hall where we will be entertained by a Ukulele band. This will be open to anyone, and we would love to see folk joining us (men, women and youngsters).

Just £5 a ticket for a good evenings fun. Tea and coffee included. On Friday 19th February at 7:30.

Our next meeting is on Wednesday 3rd of February at 7:30 in the Memorial Hall. Our speaker is Martin Sissons from the charity 'Emmaus Medway'. He will be telling us about the work they do for the homeless. All visitors welcome, just £1:50 on the door.

Friendly Club

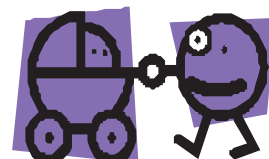
Our next meeting is on Wednesday 25th February at 2pm in the Memorial Hall. This will be a social afternoon when people can catch up on all the news, enjoy light refreshments and have a game of bingo. Why not give the club a try, at only £1 it's a bargain for an afternoons entertainment.

Considerate Parking

Mums with babies and older people are finding it more and more difficult to walk around the village due to cars parked on the pavement. They are having to walk into the road because of this, which is dangerous and unnecessary, particularly now as it is dark earlier.

Please think about this before you park your car/van and try to be a little more considerate.

Thank you
High Halstow Parish Council



Free Type 2 Diabetes Testing

A new free service for the residents of Medway which enables them to test their risk potential from getting type 2 diabetes. Many people are at risk of developing type 2 diabetes without realising it. From the NHS viewpoint the growth of type 2 diabetes is a major concern and already accounts for around 10% of the budget - and it is likely to grow. We all know that prevention is better than cure and so we are keen that as many people as possible take this free test to assess their risk and then if appropriate sign up to the free programmes that we are offering to help combat the type 2 diabetes threat.

Our Website is www.medwaydiabetes.co.uk

The free test page is

www.medwaydiabetes.co.uk/are-you-at-risk/

Details about the programme can be found at www.medwaydiabetes.co.uk/our-programme

The programmes take place across the Medway area and are now available.

Chris Parker

Medway Diabetes

High Halstow Gardening Club

The committee and members of the Gardening Club are very saddened by the news of Dennis Follett's death early in December. Dennis was our President, contributing considerable input and guidance for the progress and future of the club. He was an ardent gardener, exhibiting in all sections of our shows, vegetables, domestic, arts and crafts successfully winning many prizes. The club has lost a valued member and faithful friend.

During our Christmas social evening, we were entertained by a talented singer whilst enjoying a vast array of food bringing our year to an end with a pleasant evening.

We will commence the New Year with our AGM on Tuesday 9th February at 8.00 pm. Our Spring Show is to be held on Tuesday 8th March. If you require a schedule for the show, please contact us on 01634 221579 or hhdgc@outlook.com.

The Village Shop

Opening Hours

Monday – Saturday 7am – 8pm

Sunday 8am – 5pm

Telephone number: 01634 254561

Santa's Visit

Santa would like to express his thanks to the helpers who assisted him delivering presents on Christmas Eve to the households in High Halstow.

Special thanks to Stuart who was again very brave in letting Joanne drive his car and Bob and his staff in the shop who collected the presents on Santa's behalf.

Once again Wenda defied gravity in being able to stand up to the very end, you will have to set her harder targets. Many thanks to the people who came out with the refreshments that kept us all going.

£957 was raised this year for the Friends of St Margaret's, which included donations on the night.

See you later this year - Santa





PTA QUIZ NIGHT

BIG Screen Quiz



WHEEL OF FORTUNE



BLOCKBUSTERS

Each round is a different game...



tv theme tunes



NEW MILLION POUND DROP



CATCH PHRASE

Come along for a fun packed night, and you might learn something too!!

★ Friday 5th February, 7.30pm ★ High Halstow Primary School ★

★ £4 per person, teams of up to 8 ★ Bring nibbles & drinks ★

Open to all, come and have some fun with us!

To book your table call
Jamie or Natacha on 254178



High Halstow Hikers

We did not walk in January but had 2 walks in December when multiple storms ravaged the north of the country but we fortunately had drier mild conditions. Mike Davies led the first of the walks around Ranscombe Farm Park and was joined by 14 regulars for the 5 miles. This is a relatively new park, managed by Plantlife, whose aim is to protect and encourage native wildflowers. The walk was along signposted tracks that are well-managed. The park sits adjacent to the channel tunnel rail link and the M2 motorway but they do not encroach on the tranquility of the wooded areas. From the high areas there are magnificent views along the Medway Valley and the Bush Road area of Cuxton towards Luddesdown. One interesting part takes you along Town Road, which was an ancient byway much used in medieval times to travel between Cobham and Strood. The walk also crossed an area called Kitchen Field that is one of the few arable fields in the UK where wild flowers flourish in conjunction with planted crops.

Between Christmas and New Year, 22 of us took a local circular walk leaving High Halstow via Wyborne's Farm by the permitted footpath to New Barn Farm before heading past Cooling Court to Cooling Castle. The ground underfoot was good enough for us to take the narrow path south from Cooling through so-called Mount Pleasant and then across to Eastborough Bungalow and through the bird reserve at Bromhey Farm and up the hill to the look-out spot at the edge of Northward Hill woods. The view from across the marshes to west Essex and London is always worth a 10-minute pause even if one has not just climbed the hill. We returned to the village through the now highly coppiced woods to share some festive food and drinks to toast a highly enjoyable year of walking.

The first walk of 2016 will as usual be on Sunday 14th February for those that can spare some moments from their Valentine. It will start from Cliffe Church car park (ME3 7PY) at 10.00am. This may be busy with church users and parking close by may be necessary. We aim to do a few of the less walked paths but that will depend on underfoot conditions. Whatever the case the walk will be around 5-6 miles and be largely flat. Later walks are scheduled to be:

Sunday 13th March: Hawkhurst

Sunday 10th April: Sole Street

Saturday/Sunday 7th/8th May: Snettisham Norfolk (for the "wader spectacular")

Afternoon of Saturday 11th June: St Mary's Marshes hoping for BBQ at Egypt Bay.

All are welcome on these mainly undemanding walks. Simply join us on the day or contact Mitchell on 01634 254428 or

mitch.dowsett@btopenworld.com with any questions.

Memorial Hall

As this is the first High Halstow Times of the year, we wish a HAPPY NEW YEAR to our regular users and would like to remind villagers of the clubs etc who use the Hall, as some may be newcomers who are not aware of what is available in the Hall. The Hall continues to be well used and we hope this continues as we are always aware things need to be replaced or updated and revenue from bookings helps us to do this. Detailed below are the regular clubs and meetings.

Weekly.

Monday - Line Dancing 10:30 am - 12:30pm.

Tuesday - Kings Kitchen Coffee Morning 10:00am - 1:00pm.

Wednesday - Tai Chi 10:30 - 11:30am

Craft Club Noon - 2:00pm first three Wednesdays of the month

Thursday - Mother & Toddlers 9:00am - 11:00am.

Fitness Club 11:30 - 12:15pm (especially suited to those with limited Mobility).

Sugar Babes (Sugar craft) 7:00 - 9:00pm

Friday - Pilates 2:15 - 3:45 pm.

Saturday - Karmann Dancers - Term Time only 8:30am - 1pm.

Monthly

W I - first Wednesday

Garden Club - second Tuesday

Parish Council Meeting - second Wednesday

Friendly Club - fourth Wednesday

Village Market - usually second Sunday but check HHT.

There are some free mornings, afternoons and evenings should you have ideas for a new class and weekends can be booked for parties whether for children or grown ups, check in advance for availability.

In the Summer we hope to hold a Teddy Bears picnic with a difference and to celebrate the Queen's birthday, Macmillan Coffee morning will be in September as usual.

The Committee



CODY

Your Local Website Design Services.

Cody is a new, local web design company in your area. In fact, the owner grew up in High Halstow.

Our services include site designs / re-designs, updates, repairs and touch-ups.

If you are thinking about having a web design service, get in touch for a quote.

www.codywd.com
07792 611528 contact@codywd.com

Resume Of The Parish Council Meeting Held On 13 January 2016

The last résumé was of the meeting held on 14th October. We reported then that it was agreed to purchase a public access defibrillator. This has now been bought and will be available at the Memorial Hall. Please respect this vital piece of equipment which is designed to be available to save lives, rather than be played with and possibly vandalised.

All parish councillors were present at the first meeting of 2016 and the usual 3 "season ticket holders" were in the audience. There were 3 planning applications, none of which posed any problems. Medway Councillor Roy Freshwater had emailed comments about the proposals for the new Local Plan, which is intended to run until 2035 and which is likely to be adopted in 2018. Roy has worries that there will be a lot of building on the Peninsula as Medway has a target of new houses to meet and it's difficult to see where else in Medway so many could be fitted in. The Local Plan is in early stages and there will be plenty of consultation. Ray Collins had attended a meeting of Medway Council's Rural Liaison Committee, where a presentation had been made. It was indicated that an area at Buckhole Farm, land parallel with Longfield Avenue and the area from Half Moon Way along Christmas Lane to Sharnal Street could be zoned for housing. They were also looking at land in Hoo from Bells Lane to Ropers Lane and also Lodge Hill.

The major decision and one which many residents have been waiting for, was the purchase of a bus shelter for the stop in Christmas Lane near its junction with Half Moon Way. Residents of this area have been involved and kept informed and the proposed siting has been agreed by Medway Council. This decision is subject to the completion of the consultation period on 1st February, but it all looks positive. It should all be confirmed at the meeting on 10th February.

We hadn't heard any more about the proposal for a pedestrian crossing between the school and car park in The Street and are requesting an update from Medway Council.

The Recreation Hall Committee are still looking into grants to enable them to proceed with phase 4 of the refurbishment and £5,000 is still needed. They are continuing to fundraise.

Ray Collins attended a meeting at Medway Council with other representatives from the rural areas and raised the matter of a contingency plan for traffic on the Peninsula in the event of the A228 being closed. He was informed that a document is being prepared which will go out to consultation when ready. Also on transport matters, Chris Watson said that thanks were given at the Parish Councillors' Surgery for getting the bus timetable restored, but the last bus from Strood is at 6.55 pm and a comment was made that this should be later.

George Crozer reported on a conversation with the Surgery Practice Manager. There were no plans to reduce the level of service, but there was a shortage of doctors.

An event to celebrate the Queen's 90th birthday this year was suggested. It was agreed to put this on the agenda for the next meeting. If you are interested in helping organise such an event, please attend the next meeting which is on Wednesday 10th February in the Memorial Hall at 8 pm.

Responsible Parking

It has been noticed that a number of vehicles around the village are either parking on the kerbs, causing obstruction to pedestrians and risking children crossing the road unseen between parked cars; or are parking on corners which is a danger to other road users. Please park with consideration to pedestrians and other road users.

Speed Limits

Please can I remind people to observe the speed limits through the Village. We should all be mindful that High Halstow

is a nice place to live where children, older residents and walkers should feel safe. Some may not be as aware of the traffic as they might otherwise be. Please be careful.

George Crozer, HH Parish Council



Your Parish Councillors

George Crozer, Chair 01634 250286
e.mail: george@highhalstow.org.uk
Stuart Bailey, Vice Chair 07976 760844
e.mail: bailey.stu@btinternet.com
Martin Andrews 07984 791029
Ray Collins 01634 250105
Gary Jerreat 01634 253999
Bill Khatkar 07775 668620
Carl Mitchell 01634 250911
Christine Watson 01634 256529
Brian Williams 07908 006448
e.mail: bdwilliams9@hotmail.com

Your councillors may also be contacted through the Parish Clerk:

Mrs Roxana Brammer 01474 871269
clerk@highhalstow.org.uk

CAKE FESTIVAL

High Halstow Recreation Hall

Saturday 12th March 2016 2.00 – 4.30pm



Fundraising event for
"The Friends of
St. Margaret's Church"

Refreshments available
2.00 – 4.30pm



For further information contact

Jane Collins 01634 250105 junemari@femail.net

COMPETITION CATEGORIES

1. Cupcakes – six
2. Coffee & Walnut cake
3. Fruit cake
4. Chocolate cake
5. Bible cake
6. Novelty cake
7. Madeira cake
8. Lemon Drizzle cake

Entry £3 for first cake £1 for subsequent entries

On the day take part in:-

"The best decorated cupcake "

Cake & materials provided.

50p a go and you get the cake to eat afterwards



TIMETABLE

10.30 – 12am	Entries to be delivered
12 – 1.30pm	Judging
2 – 4.30pm	Cakes exhibited
4pm	Prize giving
4.30 – 5pm	Sale of cakes
5 – 6pm	Collection of unsold entries

EVENT RULES

1. The competition is open to all non-professional bakers and the ingredients must be safe, legal and not a commercial ready mix.
2. Exhibits and place cards must remain in place throughout the event
3. The committee reserves the right to refuse an entry and accepts no responsibility for damage to the entries.
4. The judging will be "blind" i.e. the judges will not know the identity of the entrant.
5. The judge's decision will be final
6. Entrants can offer their cake for sale on the day at their price, but the committee requests a minimum of 10% donation to the fund.
7. Entries not being sold can be collected between 5 – 6pm

HOW TO ENTER

1. Complete the "Entry Form" and send to one of the organisers (see front).
2. It would be appreciated if you book in advance, which will help with the planning of the event.
3. All entries must have been made by the entrant whose name is on the "Entry Form".
4. All entries must arrive with fee between 10.30 – 12pm on the day.

BIBLE CAKE RECIPE

1. 8oz Judges V - verse 25 (last clause)
2. 8oz Jeremiah - VI verse 20
3. 1 Tablespoon 1 Samuel XIV - 25
4. 3 off Jeremiah XVII - 11
5. 5 8oz 1 Samuel XXX - 12
6. 8oz Nahum III - 12 (chopped)
7. 2oz Numbers XVII - 8 (blanched & chopped)
8. 1lb Kings IV - 22
9. Season to taste with II Chronicles IX - 9
10. A pinch of Leviticus II - 13
11. 1 teaspoon of Amos IV - 5
12. 3 tablespoons of Judges IV - 19

Method: Beat nos. 1, 2 & 3 to a cream, Add 4 one at a time, still beating, then 5, 6 & 7 and beat again. Add 8, 9, 10 & 11 having previously mixed them and lastly no 12. Bake in a slow oven for 1.25 hours, or until skewer is clean.

Oven temps. 130 - 140 C, 200 – 275 F, Gas Mark 0.5 - 1

Note: leaven means baking powder

ENTRY FORM

Name.....

Phone number.....

Email address.....

Circle categories you would like to enter

1 2 3 4 5 6 7 8

Underscore circle if you wish to sell cake



HIGH HALSTOW WOMEN'S INSTITUTE

Presents

A DISTRICT MUSIC EVENT

Featuring

UKECLEAR SUBS

(ukulele band)

High Halstow Village Hall

Friday 19 February 2016; 7:30pm - 9:30pm

£5.00 including refreshments

Tickets available from Crystal on 01634 251849 or on the door.



Friends of St. Margarets

Christmas Tree Festival

Just over £200 was raised from the Tree Festival and The Friends would like to thank all the people and organisations who supported the event by putting a tree in. Many thanks to for all of the entertainment from Karmann Dancers, Dramarama and the Choir. Thank you for coming along and see you next time.

Future Events

12th March 2016 Cake Festival – Village Hall

Please see entry form in HHT (as well as recipe for the Bible Cake).

Date to be confirmed 'March of the Scarecrows'

As reported last time the Committee are hoping that there will be a Village event next year which we can take part in and am proposing our contribution could be the March of the Scarecrows. Do you think you have what it takes to make a scarecrow? If so watch this space for further details

Summer Event

At the time of going to press we are unable to confirm an event planned for July so please watch this space for further details

Flower Festival

Due to estimated costs the Friends will not run this event at this time

Please watch this space in future High Halstow Times for further details of these events

Use of Funds

50% of the fund raising is earmarked for the roof works, which will be required with the rest being set aside for other repairs. We are currently awaiting a survey on the electrics which identify works to be carried out and will let you know the outcome

Annual General Meeting

A date for your diary, this has been set for 9th May at 7.30 in the Church

A Reminder of How To Join

Although in the past we had accepted requests for people to pay an annual fee in one go, it was not clear enough to all that this was the case, so just to be clear you could pay as follows:

- 1 A monthly Standing Order
- 2 A one off Annual Fee

Forms are available on
<http://thefriendsofstmargarets.org.uk> or from any Committee member

Friends of St Margaret's

Dates for Diary

Every Monday:

Bumps & Toddler's

09:00

Village Hall

Every Tuesday:

King's Kitchen

10:00

Memorial Hall

Bell Ringers

19:30

St Margaret's

Church

Every Wednesday:

Stay & Play

09:00

Village Hall

Every Thursday:

Mother and Toddler's

09:00

Memorial Hall

Sugar Babes

19:00

Memorial Hall

Every Saturday:

Karmann Dancers

09:00

Memorial Hall

Every Sunday:

Déjà Vu Spiritual Centre

18:30

Village Hall

Every 4th Wednesday:

Friendly Club

14:00

Memorial Hall

Other Dates:

Wednesday 3rd:

19:30

Women's Institute

Memorial Hall

Village Event Plan

Village Hall

Sunday 7th:

09:30

Family Service

St. Margaret's Church

Sunday 7th:

10:00

Tabletop Fair

Memorial Hall

Tuesday 10th:

20:00

Gardening Club

Memorial Hall

Wednesday 11th:

20:00

Parish Council

Memorial Hall

Sunday 21st:

09:30

Family Service

St. Margaret's Church

Local groups, please let us know the dates of your meetings/events for the coming year so we can include them in the HHT and on the website.

Valentines: Sunday 14th February

78% of people who buy flowers for Valentine's Day are men, while only 22 percent are women.

About 8% of pet owners will give Valentine's Day gifts to their pets.



St. James'
Sure Start Children's Centre
 For families with children aged 0-5 years



Bumps to Toddlers
 at High Halstow Village Hall
Monday
9am-10.30am

For pregnant women and children from birth to toddler stage.

This session includes sensory fun, introducing solid food, stories & rhymes, tummy time, staying safe and much more!
 Come along and meet other parents and their babies.
 Self baby weighing is also available in this session.

IF YOU WOULD LIKE FURTHER INFORMATION, PLEASE CONTACT:
St. James' Sure Start Children's Centre
 St. James' Church of England Primary Academy High Street Isle of Grain ME3 0BS
01634 270341 E: childrenscentre@stjames.medway.sch.uk
www.stjamesisleofgrain.org.uk

Sure Start Children's Centres
 Medway

Medway
 Serving You

Kings Kitchen



A Coffee and Cake Café
 for the Whole Village.

Open 10.00am - 1.00pm
 every Tuesday

in the Memorial Hall.

Why not come in and enjoy a
 cuppa and a chat.



High Halstow Pre-school

Modular Building, Primary School, Harrison Drive,
 High Halstow, Rochester, Kent. ME3 8TF
 01634 255088

Proprietor/Manager Mrs Anita Russell BA (Hons), EYPS

- ✓ 'Outstanding Provider' Ofsted
- ✓ 2009-10 Extensive Outdoor Facilities
- ✓ Excellent Links with Primary School
- ✓ Friendly, Qualified Staff
- ✓ Affordable Childcare

Open Weekdays, term time only
 8.45 am - 3.30pm

Morning, lunch, afternoon and all day sessions
 available.

Children are funded for 5 free sessions the
 term following their third birthday.

Don't take Ofsted's word that we are an
 outstanding provider, come and see for
 yourself.

Ring 01634 255088

Leap Year

This year is a [Leap Year](#), with 366 days instead of the usual 365 days. This usually happens once every four years; however there have been exceptions such as 1900 (explained below*). Enjoy reading some Leap Year trivia and fun facts:

How Leap Year started and Leap Year calculations

- It was the ancient Egyptians who first figured out that the solar year and the man-made calendar year didn't always match up.
- That's because it actually takes the Earth a little longer than a year to travel around the Sun — 365 days, 5 hours, 48 minutes, and 46 seconds, to be exact.
- Therefore, as the hours accumulated over the centuries, an extra day was occasionally added to the calendar, and over time the practice became more or less official.
- The Romans first designated February 29 as leap day, but a more precise formula (still in use today) was adopted in the 16th century when the Gregorian calendar fine-tuned the calculations to include a leap day in years only divisible by four - 2012, 2016, 2020, 2024, etc.
- Another stipulation ruled that no year divisible by 100 would have a leap year, except if it was divisible by 400. *Thus, 1900 was not a leap year ... but 2000 was!

AN AUDIENCE WITH HENRY VIII

The 16th century Monarch meets a 21st Century Audience in a new play by Ross Gurney-Randall and Pete Howells.
 Directed by Tony Haase.

Funny . Raucous . Dark . Moving

HEADS WILL ROLL

'From the moment Henry VIII storms onto the stage he rules the house and the evening. Ross Gurney-Randall makes a larger than life and imposing King - he delivers pure entertainment'
 The Pitch, Karsos City Festival

Saturday 20th Feb. 7.30pm
All Saints Church, Allhallows
 Tickets £10 Members £8
 Concs £7 Children under 12 £7
 01634 270404 or 01634 271373
 or mskudder@gmail.com
 Refreshments available to purchase

applause

THE FOUNDRY GROUP
www.foundrygroup.co.uk
 Co produced by FGR Prods
 Suitability: 12+

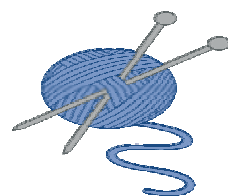
CRAFT & TABLETOP FAIR

High Halstow Memorial Hall
10am - 2pm

Sunday 7th February
Sunday 13th March
Saturday 9th April
Sunday 8th May
Sunday 12th June
Sunday 10th July



If you would like a table, please call Pat 01634 251077



Learn GUITAR

Professional guitarist and guitar teacher offers 1 to 1 tuition. All ages and abilities welcome. Graduate of London Guitar Institute and playing experience includes The Who and Robbie Williams. Can inc practical, grades & theory.

CHRISTMAS VOUCHERS AND DEALS AVAILABLE
HOME VISITS OR AT HOME STUDIO IN CHRISTMAS LANE

Call Matthew 07967 125091



LOCAL ELECTRICIAN

Domestic + Commercial + Industrial
NAPIT PART P APPROVED ELECTRICIAN
Steve Waldie

Full & Part Rewires - Consumer unit changes - internal power sockets & lighting - External power & lighting - Bathroom fans - Testing & inspection - Alarm Systems

No Job Too Small - No Call Out Charge
All work fully insured and guaranteed



Tel 01634 253169 Mob 07833 251805



Based in High Halstow
Contact Jade
07708 394979



Permanent Makeup is an advanced technique used to apply coloured hypoallergenic pigments into the dermal layer of the skin. The pigments are made from natural minerals making enhancements look very natural that can last for years but will fade over time.

Treatment areas:

Brows: Eyebrows frame the face, with the right shape & colour brows it can make you look years younger

Eyes: It can be difficult to apply eyeliner correctly & make it last all day. Define your eyes with eyeliner or lash enhancement.

Lips: Define & enhance your lips with a gorgeous lip liner, blush or full lip colour.

Book a free consultation to see how Permanent Makeup can help you.

www.serenitypermanentmakeup.co.uk



Jonathan Computers

Freephone: 0800 321 38 79

Mobile No: 07905 120 557

Email: sales@jonathancomputers.co.uk



Computer problems solved quickly and cheaply...with a friendly face

And Best of all I come to YOU!!!!

- ☐ Dramatically Speed up Slow PC's
- ☐ Virus & Malware Removal
- ☐ Fix Broadband connection issues
- ☐ Data Transfer & Recovery
- ☐ Install Windows 10 or Fix Install Issues
- ☐ NO 'Call Out' Charge
- ☐ Make Win 8/8.1 look like XP, Vista or 7
- ☐ New Economy Pc's & Laptops



NEW!!!!!!
Windows 10™

From 8th April 2014 All Support for ALL XP™ Versions has discontinued!!!!

If you are using a computer with Windows XP on
YOU ARE AT SEVERE RISK!!!!



**I Am Based In High Halstow
So Can Be Quick To Respond!**

01474 879878

(Gravesham Office Number)

St. James' Sure Start Children's Centre

For families with children aged 0-5 years



Stay and Play

at High Halstow Village Hall

**Wednesday
9am-10.30am**

For children 0-5 years.

A wide range of activities for children and adults to get involved with including creative activities, physical activities and exploration.
Fresh fruit and drinks are available.

IF YOU WOULD LIKE FURTHER INFORMATION, PLEASE CONTACT:

St. James' Sure Start Children's Centre

St. James' Church of England Primary Academy High Street Isle of Grain ME3 0BS

01634 270341 E: childrenscentre@stjames.medway.sch.uk

www.stjamesisleofgrain.org.uk

**Sure Start
Children's Centres**
Medway



Medway
Serving You

PAUL HUGHES

Double Glazing Repairs

NO CALL OUT CHARGE FREE ESTIMATES



- Misted Units Replaced •
- Cracked Units Replaced •
- Broken Hinges •
- Cat Flaps Fitted •
- Locks Repaired •
- Damaged Handles •
- Doors Re-Adjusted •
- Windows Fitted •

M: 07815 948637

H: 01634 256631

SanFran Fitness

Fitness classes for all ages in Kent

A New Fitness Class

"Seated Exercises"

Thursday Morning 11:30am - 12:15pm

£4 per session

This class is all about upper and lower body movement. If you have a problem with balance, are an older adult or are in rehabilitation then this is the class for you. All the exercises are completed using a chair in a relaxed and fun atmosphere. Equipment such as light weights, resistance bands and foam balls are used to move to music.

Come and join us...No Lycra Necessary!!!

Phone Wendy (255366) or Ann (251914) for more info.

High Halstow Stitchers in The Memorial Hall

1st, 2nd & 3rd Wednesdays in each month 12-2pm

A chance to learn a new skill involving Stitches of all types from friendly, like minded ladies and to pass on any skills you may have.

Quilting - X Stitching - Patchwork - Knitting
Sewing in General etc.



Come along and join us.

DEJA VU SPIRITUAL CENTRE



Every Sunday

Please join us to see mediumship demonstrated by different medium's each week. **6.30-9.30pm ONLY £3.00 ENTRY FEE.**

RAFFLE PRIZES TO BE WON AND REFRESHMENTS AVAILABLE.
**RECREATION HALL, THE STREET
HIGH HALSTOW.
ROCHESTER
ME3 8SQ**



High Halstow Toddler Group

Term time only

Thursday mornings

9-11

In

The Memorial Hall

From birth - 5 years

If you are a Mummy, Daddy, Grandparent or Carer please come along for a chat and some homemade cake whilst your children play!

Just £2 a session

For More Information Please Contact Emma

On

01634 255874

Or

Emma.vidler1@btinternet.com

Or Find Us On Facebook



Readers Letters continued...

HH Village Website

Please visit the Parish Council website for everything about our village. You can see the minutes of your Parish Council or look up local groups in the village, past copies of the High Halstow Times, and pictures of recent events. Please note that there is now an RSS feed on the Parish Website where you can get automatic updates when the site is updated. Please visit www.highhalstow.org.uk and follow the instructions on the right hand side.

Local Groups and the Website

You can advertise your activities free of charge on this site just let us have the details. If your details need updating with either dates or details of events please let us know by emailing gary@highhalstow.org.uk. This can be used to keep your members informed and possibly attract new members to your group.

New Bus Shelter

The consultation period for the new bus shelter finished on the 1st February, and subject to any late developments it is likely that the Parish Council will be placing an order for either the Eaton or the Hassock bus shelter (see pictures below), to be installed in Christmas Lane near to the junction with Half Moon Way. An installation date will be confirmed once available from the contractors.



Eaton

Hassock

Murder at Heronwood Falls Saloon

After last years successful Murder Mystery evening we are planning to hold a similar event on Friday 23rd and Saturday 24th September. More details to follow in the HHT.

Woods but I don't remember visiting any of the Wellard family. Len had a business locally and owned land in Cliffe Woods before it was compulsorily purchased in the late 1960s. He moved to Essex to live with my grandmother in the early 70s. However these were all my grandmother's relatives. Were there any members of Lewis' family living in High Halstow in the 60s and 70s, the times when we visited the most? Over the recent Christmas holidays, my brother and I and our family visited the village and Decoy Farm. We also found some Wellards in the graveyard in the church in High Halstow, some of whom from our research, I know are our direct ancestors. We noted that the graves were well tended and wondered if there was anyone from the family who would be happy to speak to us or if there is anyone who can fill in any of the "gaps" in our knowledge. If anyone has any information and would be willing to contact us, we would be very grateful.

I can be contacted on
Robert.clarke58@btinternet.com

Many thanks in anticipation
Sue and Mike Wellard

Dear Dog Owners,

If you regularly leave dog mess on the pavement at the corner of Harrison Drive/opposite Willowbank or throw it, nicely tied up in small black bags, over the fence - then here is a message for you: We have to tidy it up, regularly step into it and are sick and tired of it. Please stop.

Antje
Harrison Drive

Need to Hire a Hall

If you are interested in hiring either of the halls in the village for a party, function or meeting please contact:

Memorial Hall - Angela Forward 251756
Village Hall - Crystal Wakefield 251849

Please do not call on a Sunday.

HHT Distributor Wanted

HHT distributor needed to deliver to the 6 households in Dux Court (which are in close proximity to each other). If you are interested please give me a call.

Nigel Smith 01634 250018 or 07760 110364

Readers Letters

Dear HHT,

My name is Sue Wellard and my brother, Mike and I are hoping to find information regarding Lewis Wellard, my paternal grandfather who was born and lived in High Halstow.

My grandfather was born in 1899 and died in 1964. I am aware that he had brothers and a sister, Grace (Dipper), who lived near us in Grays in Essex with her husband. I believe that he lived at Jubilee Cottages in the village but am currently researching this.

We know that Lewis was a despatch rider in WW1 (we think for the Red Cross) but apart from that we know little of his war service. We attended a funeral wake of a family member some years ago at the Memorial Hall and I was thrilled to see a photograph of Lewis on the wall. I understand that there is a plaque on the wall of the hall as well and Gary Thomas has kindly contacted us to enable us to visit and view the photo and plaque.

I was too young when he died to know about or ask about such things and remembering him as I do, I am sure, that like most people of his generation, he would not talk about what he had seen or done.

However we would be very interested to know about his war service, if anyone has information His wife, my grandmother (Annie Elizabeth Lane) also came from this area. She told me most of the family history as I grew up. They had moved to Tilbury in Essex some time in the 1920s, but I didn't ask her why! We suspect it was because of the fact that companies such as Procter and Gamble were opening factories in the area and due to the economic recession we suspect this was a good opportunity to obtain work however we are not sure if this was the case. Lewis worked for Van den Berghs and Jurgens in West Thurrock for most of his life until his retirement.

My father, Malcolm and his brother Keith were both born in Essex but Lewis and Annie took them back to Kent frequently to visit relatives.

We know that Lewis was good at cricket (a family trait!) and I believe that he once had a trial for Kent. Did he play for a local side and are there any photos still available I wonder?

When we were young, we frequently visited relatives in the area; Emma Croucher (Annie's sister) with her daughter and son, Mabel and Bertie who lived in a bungalow in Christmas Lane. We also visited George Croucher and his wife Iris, Annie's nephew, who was farm manager at Decoy Farm. Also Annie's brother, Leonard Lane who had a house near the old Merryboys pub in Cliffe

continued inside...

Dear HHT,

I have a great deal of sympathy for the traffic problems experienced by your Christmas Lane correspondent. Similarly, I also sympathise with those persons effected by speeding through the centre of the village. > Only recently, with functions taking place at both village centre venues, I was surprised to see the speed some motorists passed by however, surely the worst excesses of crazy speed occur on Sharnal Street. The stretch of road from Christmas Lane to Fenn Corner is the most dangerous stretch of road in the village and yes, it is a part of the village which may come as a surprise to many of you. There is a 40 miles per hour speed restriction almost universally ignored by those familiar with the road. That speed limit applies all the way to the container terminals at Grain. The powers that be acknowledged that the road was so dangerous that variable speed cameras were installed along it's length but for some peculiar reason, not that stretch of road between Christmas Lane and Fenn Corner. I have lived on Sharnal Street for almost 40 years now and have never known things to be so dangerous. Correct me if I am wrong but since the installation of the cameras, there have been only 3 fatal > accidents on any road within the village, and all of those fatalities have been, yes you have guessed, on the stretch of road between Christmas Lane and Fenn Corner ie. that road not covered by the variable speed cameras. The density of houses on this stretch of road is greater than anywhere else along its entire length and the customers using Bradfords Garage are surely entitled to adequate protection. Representation for the installation of an extra pair of cameras to cover this part of the road have been made and a promise was received that the excess funds which were anticipated following the construction of the extravagant roundabout at Fenn Corner would be used to provide the extra cameras. Who knows where that money went? Might I suggest that a little more effort from our representatives is called for to ensure greater safety. Entering and leaving my property becomes a greater nightmare by the day.

**Roy Harris
Sharnal Street.**

Next edition March 2016; Contributions for March should be sent
by 24th February to:

Carl Mitchell, 8 Marsh Crescent, High Halstow ME3 8TJ
or e.mail to editor@highhalstow.org.uk