



# High Halstow TIMES

Home of the Heron



---

April 2016

---

## *Resume Of The Parish Council Meeting Held On 9 March 2016*

The meeting held on 9<sup>th</sup> March was attended by 7 of the 9 parish councillors and by 6 members of the public. Carl Mitchell was on holiday and Stuart Bailey had been detained at work. There was one planning application, for a single storey front extension to a house in Willowbank Drive, to which it was agreed the response would be one of no objection.

There were comments that the grass was getting long. A start had been made by the contractor but he had not carried on as it had proved to have been too wet to mow. Trees to replace those that had died on the Recreation Ground were on order and the litter bin by the children's play area will be replaced with a dual purpose bin. The decision taken at the February meeting to improve part of the all-weather path where it puddles badly in heavy rain will be implemented. Replacement swing seats and chains have been ordered and some of the safety surfaces will be attended to at the same time as the swing seats are installed.

The final phase of the Recreation Hall refurbishment will start quite soon and Ray Collins was due to meet with the builders and get a date. They will need to use the car park again and all residents are asked to bear with this while the building works take place. The works on the pedestrian crossing have been rescheduled for the Easter school holidays, but if they aren't quite finished by the time the children return to school, we would be grateful if the company installing the crossing are given the chance to complete the job without harassment from parents. The construction of the crossing is after all due to a petition and campaign by parents and will be for the safety of all, including the school.

The Parish Council has purchased a community defibrillator which will be sited at one of the halls.

Ray Collins reported on the event which is being organised to mark the Queen's 90<sup>th</sup> birthday. A meeting of the steering group had been held and a plan had been put together. He commented that more stalls would be welcome. The event will be held on Saturday 11<sup>th</sup> June from 1 to 9 pm on the Recreation Ground.

Comments were made that the turning circle at the end of Sharnal Street has become a gathering point for young people and that there was a lot of litter and also a dumped car.

The next meeting will be the Annual Parish Meeting, which will be held on Wednesday 13<sup>th</sup> April in the Memorial Hall at 8 pm. This is the annual meeting for all residents and will conclude with the Chairman's buffet. The next actual parish council meeting will be held on Wednesday 11<sup>th</sup> May. Everyone is welcome to attend all meetings of the Parish Council.

### *Vegetation*

The Parish Council is asking people who have shrubs/trees overhanging on to public walkways if they would mind cutting back in order for people to walk unhindered. Thank you for your cooperation.

### *Thefts from Sheds and Outhouses*

Please be aware that thefts from sheds and outhouses have been reported recently on the peninsula and the Parish Council have been asked to remind people to lock up securely to make it more difficult for would be thieves.

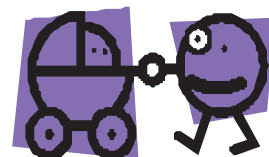
**HH Parish Council**

### *Considerate Parking*

Mums with babies and older people are finding it more and more difficult to walk around the village due to cars parked on the pavement. They are having to walk into the road because of this, which is dangerous and unnecessary, particularly now as it is dark earlier.

Please think about this before you park your car/van and try to be a little more considerate.

Thank you  
High Halstow Parish Council



## ***High Halstow Hikers***

Our walk in March followed "The Small Hawkhurst Ring" that circles the village of Hawkhurst and is about 5 miles long. It is one of several walks listed as starting from The Great House, an excellent pub/restaurant to the north of the village just off the A229 making it straightforward to find although a bit further away than most of our walks. There was a rather discouraging start where the instructions required us to turn at the breaker's yard and then walk past the water treatment plant! But fortunately thereafter the varied walk took us through woods, past streams, across meadows and along quiet roads as well as through the grounds of Marlborough House School and was enjoyed by 15 of us. The weather had been dry for about a week and this meant the footpaths were generally good other than some short very sticky parts. Several of the meadows that we walked past were occupied by large numbers of quaint looking alpacas and rare-breed sheep. Our time was also spent pausing to look enviously at some lovely old houses in beautiful locations. We saw very little of Hawkhurst itself since the "Ring" just touched the outskirts on a couple of occasions. Back at the 16th Century pub several of us enjoyed an excellent lunch.

The April walk will be on Sunday 10th and start at 10.00 from Sole Street station which is on the right immediately before the Railway Tavern as you leave Sole Street village on the road between Cobham and Meopham. This walk will be led by Mike Davies who can be contacted [mikeplotters@mac.com](mailto:mikeplotters@mac.com).

More general enquiries to Mitchell at [mitch.dowsett@btopenworld.com](mailto:mitch.dowsett@btopenworld.com) or 01634-254428.

### ***The Village Shop***

#### ***Opening Hours***

Monday – Saturday 7am – 8pm

Sunday 8am – 5pm

Telephone number: 01634 254561

## ***Come and Meet Your Parish Councillors***

Chris(tine) Watson and Gary Jerreat, two of your Parish Councillors, will be at Kings Kitchen in the Memorial Hall on: Tuesday 12<sup>th</sup> April 2016 from 10.30 – 12.00pm

and every 2<sup>nd</sup> Tuesday in the month.

Come and tell us your problems or find out about projects we are undertaking.

If we can't answer your questions there and then we will get back to you.

High Halstow Parish Council.



## ***Friendly Club***

At our last meeting members enjoyed a fun afternoon making Easter cards. There is no meeting in April as members are having a day out to Swanley Market and then on to Ruxley Garden Centre. The next meeting will be on Wednesday 25th May.

## ***Busy Time***

What a busy time for WI ladies. It's been a busy month starting with our meeting making a craft item for Easter. It was not so easy but we all managed to take home a decorated paper bag which could be filled with little eggs.

19 members and friends had a guided tour of Flanders Fields on the Ratcliffe Highway. It was amazing, the high-tec equipment made you take a sharp intake of breath. What a huge operation and getting bigger. All the apples and pears they process are British, coming from many farms here in Kent. The noise made it difficult to hear the very enthusiastic PR woman. As it was the first time they had done this they learnt lessons such as keeping the group size smaller. On leaving we were given complementary fruit to take away, and then 9 of us went to their Gore Farm shop where we had a lovely lunch in the café.

We had our annual dinner at the Hogarth Inn in Grain. They looked after us very well indeed and the food was mainly of a high standard for 'pub grub'. Three members attended the annual council meeting in Tonbridge Wells, where disappointment was felt as the speaker Jeremy Paxman was unavailable. He was replaced at very short notice by Henry Blowfield the cricket commentator. He had everyone in stitches with his amusing stories over the years. Not many ladies were too sorry not to have heard Mr. Paxman.

Coming up next month is Sue Duckworth from Sissinghurst Castle. She will be telling us all about the castle and Vita Sackville-West. The meeting is on Wednesday 6th April at 7:30 in the Memorial Hall. All visitors made welcome.

## ***Queens Birthday Village Event***

As mentioned previously we are pleased to say the Parish Council have agreed to set aside £2,000 for a celebration event to mark the Queen's 90th Birthday.

The next meeting to plan the event will be in the Village Hall on Wednesday 6th April at 7.00pm. All organisations are welcome to send a representative along as well as any other individuals who are interested in making this another terrific day in High Halstow.

See you then.

## ***Cake Festival***

A big thank you to all those who baked cakes for the second Cake Festival on 12th March in the Village Hall, organised by the Friends of St Margaret's Church. Forty two entries were placed into eight categories. The three independent external judges viewed and tasted the entries and commented again on the very good standard achieved. One cake was deemed to be so good a judge returned to purchase it.

The judge's results were -

### **Six Cupcakes –**

1<sup>st</sup> Helen Rose,  
2<sup>nd</sup> Andrea Walman,  
3<sup>rd</sup> Lewis Owen;  
who also won the under-16 1<sup>st</sup> Prize



### **Coffee & Walnut Cake –**

1<sup>st</sup> Jenny Thomas,  
joint 2<sup>nd</sup> Lesley Munday & Carol Cocup,  
3<sup>rd</sup> Hilda Woolmington



### **Fruit Cake –**

1<sup>st</sup> Jenny Thomas,  
2<sup>nd</sup> Mrs Bushell,  
3<sup>rd</sup> Lesley Munday



### **Chocolate Cake –**

1<sup>st</sup> June Collins,  
2<sup>nd</sup> Gary Thomas,  
3<sup>rd</sup> Liz Meredith

### **Bible Cake –**

1<sup>st</sup> Margaret Mace (only one entry)

### **Novelty Cake –**

1<sup>st</sup> June Collins,  
2<sup>nd</sup> Helen Rose,  
3<sup>rd</sup> Michelle Jones



### **Madeira Cake –**

1<sup>st</sup> Gary Thomas,  
2<sup>nd</sup> Margaret Mace,  
Joint 3<sup>rd</sup> Carol Cocup & Fred Beringer

### **Lemon Drizzle Cake –**

1<sup>st</sup> Crystal Wakefield,  
2<sup>nd</sup> Hilda Woolmington,  
3<sup>rd</sup> Gary Thomas

Refreshments were available to those who came to view the cakes and with the generosity of most cake makers who donated the full proceeds of their cake sale to the charity, the total raised after deduction of costs was £163.

Friends of St Margaret's

## ***High Halstow & District Gardening Club***

Once again our members provided an exceptional array of exhibits at our Spring Show at our March meeting.

The person who won the most points in the Flower section was Fran Carr with Margot Sturt gaining the most points in the Domestic and Arts & Crafts section. The overall winner of the show was Margot Sturt who will be the judge for next year's Spring Show.

Oonagh Elliott's knitted item was voted by members as the best exhibit in the show.

Whilst the judging was being carried out by Rosemary Collins, members tackled some quizzes which were won by Alison Wells, Pam Walsh and Sue Osenton.

Our meeting on 12<sup>th</sup> April will be a talk by Colin Moat on '50 Greys of Shade' which as usual will be held at the Memorial Hall commencing at 8.00pm.



## ***Annual Parish Report***

The Annual Parish Meeting will be held on  
Wednesday 8<sup>th</sup> April at 8 pm  
in the Memorial Hall.

It would be very much appreciated if village organisations would please send written reports of their activities during the previous year to the Parish Clerk, either by email to [clerk@highhalstow.org.uk](mailto:clerk@highhalstow.org.uk) or by post to High Halstow Parish Council, 53 Capelands, New Ash Green, Longfield, Kent DA3 8LQ.

The Chairman's report and all others received will be included in May's High Halstow Times.

## ***Need to Hire a Hall***

If you are interested in hiring either of the halls in the village for a party, function or meeting please contact:

Memorial Hall - Angela Forward 251756  
Village Hall - Crystal Wakefield 251849

Please do not call on a Sunday.



## *Turtle Doves on the Hoo Peninsula*

**Have you seen a turtle dove in your garden? If so the RSPB would like to hear from you.**

Some of you reading this may have been lucky enough to have heard the gentle purring call of a turtle dove, a wonderful, evocative, sound of summer. The only European migratory dove, this species is a rather later arrival than some other migrants, not appearing before the end of April at the earliest.

This year, we are asking residents on the Hoo Peninsula to send in their records of turtle dove to give us vital data on their numbers in North Kent.

Once common across most of England and Wales, between 1995 and 2014, the population of turtle doves in the UK has declined by over 91%. In addition, their range has also shrunk so that they are now largely restricted to parts of East Anglia and South East England and it is estimated that their population is halving every 5 to 6 years.

This is due to various reasons; lack of food and nesting habitat in the UK, spring hunting along their migration routes, and habitat loss at their wintering ground in Sub-Saharan Africa.

Kent remains an extremely important area for these birds. As a result the RSPB are working hard to provide for their needs, by increasing and improving nesting habitat and providing feeding opportunities by planting special crops for them. We are doing this by being a part of the Operation Turtle Dove project: <http://operationturtledove.org/> If you see or hear a turtle dove, please contact the RSPB, with where and when, and if at all possible, please provide us with a photo. Please send your observations to [northkentmarshes@rspb.org.uk](mailto:northkentmarshes@rspb.org.uk). Alternatively you can telephone us on 01634 222480 or write to us at RSPB Northward Hill, Bromhey Farm, Cooling, Rochester, Kent, ME3 8DS.



You can read more about turtle doves on the RSPB website:

[www.rspb.org.uk/discoverandenjoynature/discoverandlearn/birdguide/name/t/turtledove/index.aspx](http://www.rspb.org.uk/discoverandenjoynature/discoverandlearn/birdguide/name/t/turtledove/index.aspx)

## *998...999...1000!*

When John and Marty Pink called in recently with 2 lovely blankets' worth of squares, we were delighted, but secretly counting ...998...999... And now it has suddenly happened...we're there!

This week Hazel Beringer and Hilda Woolmington, representing Cooling Road Home Group, were thrilled to bits to receive yet another cosy offering, bright and crocheted, \_\_\_ a very special blanket indeed, from Maureen Wellard, (who is carrying on the good work of her mother, the late Gladys Mockford)\_\_\_bringing our Group Blanket Charity total up to ...1000!



Very many thanks to all our helpers over the years (and we remember those who, sadly, are no longer with us, like the late Kit Gibson, who actually knitted 174 of those blankets) \_\_\_ knitters, collectors, deliverers and donators of wool \_\_\_ we must have used miles of it by now!

As we deliver our 1000<sup>th</sup>. blanket to Ray Avenell at his Charity S.E.E.D., we think of all those whose plight is so much worse than anything we have had to endure and sincerely thank all those involved in this project.

Cooling Road Home Group.

P.S. Is it deliberate or just a strange twist of fate that the Beringer boiler has broken down this week, bringing home to us just how cold it can actually be?!

P.P.S. No...we've resisted the urge to use Maureen's blanket...so far! H.B. -

## *Speed Limits*

Please can I remind people to observe the speed limits through the Village. We should all be mindful that High Halstow



is a nice place to live where children, older residents and walkers should feel safe. Some may not be as aware of the traffic as they might otherwise be. Please be careful.

**George Crozer, HH Parish Council**

### ***Quiz Nights***

The charity to benefit from the February quiz nominated by Dramarama was Cancer Research. A lovely amount of £261.00 was raised on the night and a cheque has been forwarded for this amount.

Les Quizzerable will be nominating the charity for the quiz which should have taken place at the end of March but due to Easter has been moved to 1st April.

Margaret Church

### ***Name the Shelter Competiton***

As you are probably aware the new wooden style bus shelter has been successfully installed in Christmas lane and has received some very positive comments. The Parish Council are so pleased with this new addition to the village that we would like to name it, suggestions so far have been 'Bussy the McBus Shelter', 'Shelvie McShelter' or 'McStoppie my Bus'. If you have any suggestions please email them to [editor@highhalstow.org.uk](mailto:editor@highhalstow.org.uk) by 1st April.

### ***Murder at Heronwood Falls Saloon***

After last years successful Murder Mystery evening we are planning to hold a similar event on Friday 23rd and Saturday 24th September. More details to follow in the HHT.



A colorful poster for a 'Craft & Tabletop Fair'. At the top, a banner with the word 'CRAFT' in large letters is displayed. Below it, the text 'Craft & Tabletop Fair' is written in a pink, stylized font. The location 'High Halstow Memorial Hall' and the time '10am - 2pm' are listed. The dates 'Saturday 9th April', 'Sunday 8th May', 'Sunday 12th June', and 'Sunday 10th July' are also provided. At the bottom, there is a call to action: 'If you would like a table, please call Pat 01634 251077'. The poster is decorated with various craft-related icons like a spool of thread, a pair of scissors, and a ball of yarn, and is framed by a border of colorful flowers and leaves.

**CRAFT**

**Craft & Tabletop Fair**

**High Halstow Memorial Hall**  
**10am - 2pm**

**Saturday 9th April**  
**Sunday 8th May**  
**Sunday 12th June**  
**Sunday 10th July**

If you would like a table,  
please call Pat 01634 251077

### ***Dramarama*** ***'Do You Hear The People Sing'*** ***Change of Dates***

Please note that the date for the next Dramarama show will be:

Friday 20<sup>th</sup> May at 7:30pm and  
Saturday 21<sup>st</sup> May at 6:30pm

Further details will follow shortly so watch this space.

### ***HH Village Website***

Please visit the Parish Council website for everything about our village. You can see the minutes of your Parish Council or look up local groups in the village, past copies of the High Halstow Times, and pictures of recent events. Please note that there is now an RSS feed on the Parish Website where you can get automatic updates when the site is updated. Please visit [www.highhalstow.org.uk](http://www.highhalstow.org.uk) and follow the instructions on the right hand side.

### ***Local Groups and the Website***

You can advertise your activities free of charge on this site just let us have the details. If your details need updating with either dates or details of events please let us know by emailing [gary@highhalstow.org.uk](mailto:gary@highhalstow.org.uk). This can be used to keep your members informed and possibly attract new members to your group.

### ***A New Fitness Class*** ***"Seated Exercises"***

**Thursday Morning 11:30am - 12:15pm**  
**£4 per session**

*This class is all about upper and lower body movement. If you have a problem with balance, are an older adult or are in rehabilitation then this is the class for you. All the exercises are completed using a chair in a relaxed and fun atmosphere. Equipment such as light weights, resistance bands and foam balls are used to move to music.*

*Come and join us...No Lycra Necessary!!!*

*Phone Wendy (255366) or*



**St. James'**  
**Sure Start Children's Centre**  
 For families with children aged 0-5 years



**Bumps to Toddlers**  
 at High Halstow Village Hall  
**Monday**  
**9am-10.30am**

For pregnant women and children from birth to toddler stage.

This session includes sensory fun, introducing solid food, stories & rhymes, tummy time, staying safe and much more!  
 Come along and meet other parents and their babies.

**Self baby weighing is also available in this session.**

IF YOU WOULD LIKE FURTHER INFORMATION, PLEASE CONTACT:  
**St. James' Sure Start Children's Centre**  
 St. James' Church of England Primary Academy High Street Isle of Grain ME3 0BS  
**01634 270341** E: [childrenscentre@stjames.medway.sch.uk](mailto:childrenscentre@stjames.medway.sch.uk)  
[www.stjamesisleofgrain.org.uk](http://www.stjamesisleofgrain.org.uk)

**Sure Start Children's Centres**  
 Medway

**Medway**  
 Serving You

## Kings Kitchen



A Coffee and Cake Café  
 for the Whole Village.

Open 10.00am - 1.00pm

every Tuesday

in the Memorial Hall.

Why not come in and enjoy a  
 cuppa and a chat.



## High Halstow Pre-school

Modular Building, Primary School, Harrison Drive,  
 High Halstow, Rochester, Kent. ME3 8TF  
 01634 255088

Proprietor/Manager Mrs Anita Russell BA (Hons), EYPS

- ✓ 'Outstanding Provider' Ofsted
- ✓ 2009-10 Extensive Outdoor Facilities
- ✓ Excellent Links with Primary School
- ✓ Friendly, Qualified Staff
- ✓ Affordable Childcare

Open Weekdays, term time only  
 8.45 am - 3.30pm

Morning, lunch, afternoon and all day sessions  
 available.

Children are funded for 5 free sessions the  
 term following their third birthday.

Don't take Ofsted's word that we are an  
 outstanding provider, come and see for  
 yourself.

Ring 01634 255088

## Dates for Diary

### Every Monday:

Bumps & Toddler's

09:00

Village Hall

### Every Tuesday:

King's Kitchen

10:00

Memorial Hall

Bell Ringers

19:30

St Margaret's

Church

### Every Wednesday:

Stay & Play

09:00

Village Hall

### Every Thursday:

Mother and Toddler's

09:00

Memorial Hall

Sugar Babes

19:00

Memorial Hall

### Every Saturday:

Karmann Dancers

09:00

Memorial Hall

### Every Sunday:

Déjà Vu Spiritual Centre

18:30

Village Hall

### Every 4th Wednesday:

Friendly Club

14:00

Memorial Hall

### Other Dates:

Sunday 3rd:

09:30

Family Service

Wednesday 6th:

19:30

St. Margaret's Church

Women's Institute

Memorial Hall

Wednesday 6th:

19:00

Village Event Planning

Village Hall (Green Room)

Saturday 9th:

10:00

Tabletop Fair

Memorial Hall

Sunday 10th:

High Halstow Hikers

Details in HHT

Tuesday 12th:

20:00

Gardening Club

Memorial Hall

Wednesday 13th:

20:00

Parish Council

Memorial Hall

Friday 15th:

19:30

Village Hall Quiz

Village Hall

Sunday 17th:

09:30

Family Service

St. Margaret's Church

Friday 29th:

20:00

Quiz

Memorial Hall

Friday 20th May & Saturday 21st May:

Dramarama Summer Show

*Local groups, please let us know the dates of your  
 meetings/events for the coming year so we can  
 include them in the HHT and on the website.*



## Jonathan Computers

Freephone: 0800 321 38 79

Mobile No: 07905 120 557

Email: sales@jonathancomputers.co.uk



*Computer problems solved quickly and cheaply...with a friendly face*

***And Best of all I come to YOU!!!!***

- ☐ Dramatically Speed up Slow PC's
- ☐ Fix Broadband connection issues
- ☐ Install Windows 10 or Fix Install Issues
- ☐ Make Win 8/8.1 look like XP, Vista or 7
- ☐ Virus & Malware Removal
- ☐ Data Transfer & Recovery
- ☐ NO 'Call Out' Charge
- ☐ New Economy Pc's & Laptops



**NEW!!!!!!**  
**Windows 10™**

From 8th April 2014 All Support for ALL XP™ Versions has discontinued!!!!

If you are using a computer with Windows XP on  
**YOU ARE AT SEVERE RISK!!!!**



**I Am Based In High Halstow  
So Can Be Quick To Respond!**

**01474 879878**

(Gravesham Office Number)

## St. James' Sure Start Children's Centre

For families with children aged 0-5 years



**Stay and Play**

at High Halstow Village Hall

**Wednesday  
9am-10.30am**

**For children 0-5 years.**

A wide range of activities for children and adults to get involved with including creative activities, physical activities and exploration.

**Fresh fruit and drinks are available.**

**IF YOU WOULD LIKE FURTHER INFORMATION, PLEASE CONTACT:**

**St. James' Sure Start Children's Centre**

St. James' Church of England Primary Academy High Street Isle of Grain ME3 0BS

**01634 270341** E: childrenscentre@stjames.medway.sch.uk

www.stjamesisleofgrain.org.uk

**Sure Start  
Children's Centres**  
Medway



**Medway**  
Serving You

### *High Halstow Relief in Need Charity*

This charity exists to assist those in the Village who are in need, especially widows and widowers. The trustees wish to remind the people of the parish that they will give consideration to any request for a particular need, at any time during the year. If you, or an elderly relative would feel safer at home with a telephone 'Lifeline' the Charity could help with this. All requests are dealt with in complete confidence and there is no need to wait for the October form.

The trustees are:

- Rev. S. Gwilt - The Rectory
- Mr S. Bailey - 27 Cooling Road
- Mrs J. Collins - 6 Marsh Crescent
- Mrs L. Munday - 22 Willowbank Drive
- Mr J. Myatt - Decoy Hill Road
- Mrs C. Peek - 2 Willowbank Drive
- Mrs N. Turner - 12 Marsh Crescent

## Readers Letters

Dear HHT,

I would like to take this opportunity to thank all those in the village who attended Barbara's funeral service on January 12th. Your support, both at the church and at the crematorium, was of great help in getting me through what was a very difficult day. A special thanks must also go out to Gill Ellen and Matthew Terry who helped me with many administrative and spiritual matters for which I am truly grateful. Also, I would like to thank those who cared and provided friendship to Barbara over the past years when her health was failing.

Alistair Formby

Dear HHT,

'Henry Hillier'

Always known as Harry, sadly passed away in February at the grand old age of 97 years old. Harry moved into the village at the age of six years old in 1924, when his father left Port Victoria in Grain to become Signaller at High Halstow Halt. Harry attended the original village school, which was then opposite the Red Dog Public House. He later married a local girl, Phyllis Godden in 1940, and they spent most of their lives in the village.

During the Second World War he served in the Home Guard. Harry worked at the local farms until the arrival of the BP Refinery in Grain, where he worked until he retired.

In his later years Harry enjoyed travelling, dancing and bowls.

Harry is sadly missed by family and friends.

Mrs Hillier

Thames Avenue

Dear HHT,

I was extremely lucky to receive a ballot place for the London Marathon on the 24th April 2016. I have chosen to raise funds for Macmillan Cancer Support. I have never run a marathon before, but I am training, villagers may see me frequently in the evenings during the week doing a 2.5k loop of the village with my brother-in-law Mark. I have set up a just giving page for Macmillan Cancer Support – [www.justgiving.com/stratfordsteve](http://www.justgiving.com/stratfordsteve)

Thank you for any support you can give.

Steve Stratford

Northwood Avenue

### High Halstow Parish Council

S3 Capelands • New Ash Green • Longfield • Kent DA3 8LQ  
tel: 01474 871269 • mobile: 07950 677731 •  
e-mail: [clerk@highhalstow.org.uk](mailto:clerk@highhalstow.org.uk) • [www.highhalstow.org.uk](http://www.highhalstow.org.uk)

NOTICE is hereby given that the Annual Parish Meeting will be held at the Memorial Hall, High Halstow on Wednesday 13 April 2016 at 8.00 pm, which meeting Members are summoned to attend and to which all parishioners are invited

#### AGENDA

- 1 Apologies for absence
- 2 Minutes of the Annual Parish Meeting held on 22 April 2015
- 3 To receive the Financial Statement of the Parish Council's Audited Accounts for the year ended 31 March 2015
- 4 Chairman's Annual Report
- 5 Medway Councillors' Report
- 6 Reports from Local Organisations
- 7 Other business at the Chairman's discretion

Chairman's Buffet

*Roxana Brammer*

Roxana Brammer  
Parish Clerk

1 April 2015

ALL WELCOME

### Your Parish Councillors

George Crozer, Chair 01634 250286

e.mail: [george@highhalstow.org.uk](mailto:george@highhalstow.org.uk)

Stuart Bailey, Vice Chair 07976 760844

e.mail: [bailey.stu@btinternet.com](mailto:bailey.stu@btinternet.com)

Martin Andrews 07984 791029

Ray Collins 01634 250105

Gary Jerreat 01634 253999

Bill Khatkar 07775 668620

Carl Mitchell 01634 250911

Christine Watson 01634 256529

Brian Williams 07908 006448

e.mail: [bdwilliams9@hotmail.com](mailto:bdwilliams9@hotmail.com)

Your councillors may also be contacted through the Parish Clerk:

Mrs Roxana Brammer 01474 871269

[clerk@highhalstow.org.uk](mailto:clerk@highhalstow.org.uk)

Next edition May 2016; Contributions for May should be sent by 24th April to:

Carl Mitchell, 8 Marsh Crescent, High Halstow ME3 8TJ  
or e.mail to [editor@highhalstow.org.uk](mailto:editor@highhalstow.org.uk)