

High Halstow TIMES



Home of the Heron

May 2009

***High Halstow Primary School
Consultation on Change of Status***

The Governing Body of High Halstow Primary School is currently running a consultation on changing the status of the school from community to foundation. If this change takes place then three key factors will come under the direct control of the Governing Body as opposed to the Local Authority. The Governing Body would become the employer of staff, own the buildings and land, and would become the admissions authority for the school. The school would also be able to set its own term times and the foundation would have charitable status. The school would continue to receive funding from the Local Authority as it does currently and would still be accountable to the Local Authority and OfSTED as it is at present.

More details on this change can be found on the schools website:

<http://www.highhalstowprimaryschool.org.uk/foundationstatus.htm>, details of how to contact the Governing Body for more information or to make representations can be found here.

Alternatively you may contact the Governing Body via the Chair of Governors by writing to the school or via the details below.

A public meeting will be held at the school on Thursday 7th May 2009 at 7pm where questions can be asked and any representations may be made. If you wish to attend the meeting please contact the school office on 251098 or via email at

foundation@highhalstowprimaryschool.org.uk

The consultation period closes on 15th May 2009.

Matt Stutely

Chair of Governors

High Halstow Primary School

foundation@highhalstowprimaryschool.org.uk

***High Halstow Parish Council
Councillor Vacancy***

There is currently a vacancy for a Parish Councillor to join the High Halstow Parish Council, applications should be made in writing to the Parish Clerk at 53 Capelands, New Ash Green, Longfield, Kent DA3 8LQ or e.mail

roxana.brammer@highhalstow.org.uk.

Should more than one applicant apply The Council will hold a round of interviews to choose the successful applicant.

Inside this month's HHT:

Ladies Night, Lodge Hill, Queen B, Nicky Moore, Summer Fair, Bingo, Fantasy Cricket, Fashion Show, Farmers Market, 10k Walk, Wool, Club Reports, and much much more.....

PROJECT MORNING
90 minutes spent improving
the village

Saturday 16th May

8:30am Start at the Village Hall

Fashion Show

Look out for the posters advertising a Fashion Show on Friday June 19th 7:30pm in the Recreation Hall. A talk on accessories and colour will be followed by models (from the village) wearing smart casual clothing which can be bought on the night. Light refreshments will be included in the ticket price of £3, there will also be a raffle. For more information / tickets please ring 250677.

Margaret Whitebread

Blythwood Care

Wool donations would be most gratefully received by Cooling Road Home Group in order to continue with our ongoing supply of blankets to Blythwood. Our total now stands at 465 blankets and, perhaps not surprisingly, we are desperately in need of more wool! If you can help, please contact Hazel Beringer on 251135 to arrange collection or, if you prefer, just drop the wool into 25, Cooling Road, High Halstow.

Many thanks for your previous help.

Hazel Beringer

Stop Press

The 8th Annual Quizathon raised £335 for the HUGH Fund. The hall was packed with enthusiastic quizzers and with Pat as compere a laugh was guaranteed as technology (microphone) was mastered.

Highlight of the evening has to be when the Dramarama table were texting George Crozer to inform him that they had won in his absence only for more frantic texting to George to say no they hadn't when they read the final scores.

Congratulations to John Pink and his band for winning and thank you all for attending what was a fun evening even if I couldn't get any questions right. Well done to Pat, Margaret and Lesley for running the evening.

Gary Thomas

Hall Committee

Village Hall

It is the Annual General meeting of the Village Hall Committee on May 13th at 7.00p.m. at the Village Hall all are welcome.

May we also remind everyone that ball games are not permitted on the Village Hall Car Park and that offenders may be prosecuted. This hardline has been taken due to the continual cost of repairing windows broken by footballs. The broken glass is also a health risk and raises safety issues.

Hall Committee

Oops- someone had a very senior moment.

Sorry if I caused confusion in last months HHT by giving the wrong date for our meeting. Fortunately most people ignored my mistake (do they know me too well). Betty Copleston gave an information packed talk on her experiences as a tour guide in and around Rochester, with humour of course.

Another busy month for the W.I. members. Our lunch was at The See-Ho in Shorne, good parking, good service food was fine with an amazing choice. A medieval cookery evening was lots of fun, where we saw and tasted the food, not to everyones taste!!

Three members enjoyed a bird walk with a Warden in Oxleas Wood. A beautiful day in a lovely park, one of the many that make up the Green Chain Walk, which is 16 miles long through the 20 parks of South London ending in Erith. Two ladies tried to improve their computer skills on a day course, think we both ended up confused and brain dead. Lastly a fantastic day listening to members from the Royal College of Surgeons covering subjects on joint replacement, general surgery, osteoarthritis, and paediatrics. I felt I was in the company of very special, highly regarded people. Two of whom, both past vice-presidents of the college, were really impressive.

Next meeting Wednesday 6th May at 7:30 in the Memorial Hall. Slightly different meeting as we will be discussing and voting on a very serious problem with the bee population. Visitors still welcome only £1:50 on the door.

Margaret Whitebread

EON awards Hoo Peninsula community groups

The EON Community Investment Fund is available to all communities across the Hoo Peninsula and is aimed at supporting effective projects that will help genuine community needs.

At the last awards panel meeting on 31st March another seven community groups benefited from grants totalling to £10,736.72

- * High Halstow Primary School was awarded £1,373 towards developing the outside learning area
- * 1st Cliffe Woods Guides was awarded £250 towards a camcorder
- * 1st Cliffe Woods Rangers was awarded £500 towards tents
- * UJ Community Partnership was awarded £3,050 towards computers and insurance costs
- * Hoo Peninsula Community Responder Scheme was awarded £3,370 towards 2 responder kits
- * St James Toddler Group was awarded £693.72 towards new trikes and tricycles
- * St Helens Primary School was awarded £1,500 towards the allotment

Community Fund Co-ordinator Becky Williams said "40 community groups in the Hoo Peninsula have benefited from this fund with a total of £74,000 given away in funding from the £125,000 EON Community Investment Fund. Decisions on the grants are made by a panel which is made up of representatives from local parish councils and E-ON project teams. We urge big or small applicants to apply before the next deadline of the 19th June".

If you would like to know more, please call Becky Williams, Action with Communities in Rural Kent on 01303 813790 or email info@ruralkent.org.uk. Or visit www.ruralkent.org.uk for more information.

Nicky Moore Returns

Nicky Moore is returning to the Village Hall on Saturday 23 May for a show along the lines of the Valentines evening last year. This evening is being called – Old, New, Country and Blues. That probably explains that the style of music will be varied. Nicky was conscious that some people expected him to sing the blues so he has agreed to do a couple of blues numbers. The rest of the evening will be a variety of his singers performing lots of different styles.

There will be a licensed bar and the price of £12.50 includes a buffet during the intermission. Doors will open at 7.30 with the show getting started shortly afterwards.

Tickets will be available from Margaret Church on 253709 or at the Farmers Markets on 2 May. Also available from Wenda Taylor on 253169.

HH Village Website

Did you know you can see the minutes of your Parish Council on our website! If that is not your cup of tea, you can also look-up local groups in the village, plans for the Hall Refurbishment, past copies of the High Halstow Times, and pictures of recent events.

For all your village needs the site is www.highhalstow.org.uk

*Ladies Night at The Red Dog
Tuesday 19th May
from 7:30pm*

*Sparkles Jewellery
Virgin V. makeup
Anne Summers*

Join us for a Girlie night out..

High Halstow Cricket Club – April 2009

In my last report I said “The warmth of recent weeks has provided good growing conditions, and pre-season ground preparations are in full swing – a sure sign of cooler, wetter weather to come.” Sure enough we had a couple of days of downpours, but they only served to enhance the growth of everything, and make the grounds look good. We now wait to see whether they are as good to play on.

By the time you read this, we would have played at least 4 games (weather permitting), and started a 2 month period when the club is putting out 9 or 10 teams a week at all levels. A busy time for all concerned, and lots of opportunity for spectators to enjoy what we hope will be a fun summer.

In recent days the possibility of an all-girl team at under 11 is moving nearer becoming a reality. This will be an exciting development and we will encourage the group to stay together as long as possible. There are a number of ladies teams in the county, and they are strong enough to provide international players.

On 25th May, the Spring Bank Holiday, the Club is holding a Sponsored Walk over a 10 k course (details to be determined). Our committee agreed that 50% of the net proceeds will go towards maintenance and improvement of equipment and facilities used by our Colts Section, with the remaining 50% to a charity or good cause. I am pleased to say that the chosen cause is the refurbishment of the Recreation Ground Play Park. Our members would be pleased to be joined on the walk by any villagers and friends willing to take part. Sponsorship forms will be available from the Cricket Pavilion, the Shop and from 9, Marsh Crescent. The walk, which will start at 10.00 will be followed by a “warm down” BBQ, games and other impromptu events on the cricket ground during the rest of the day. Registration will be from 09.00 on 25th May. We will try to make the course as friendly as possible for all age groups, including toddlers in push-chairs.

The fantasy cricket web site is up and running at <http://www.highhalstow.clubfantasycricket.co.uk> where you will find details of how to register and everything else you need to know to join in this game of fun.

All details of our forthcoming fixtures can be found at http://high_Hlt228272863h_Hlt228272863alstow.play-cricket.com/home/home.asp . Results will be summarised in this publication on a regular basis. Hopefully we shall have good news to report across the board from U11s to 1st XI.

David Laphorn

Chairman

HH Cricket Club

Farmers Market

The next Farmers Market is on Saturday 2 May, doors opening at 9.30. Why not come along and buy your weekend vegetables, meat, bread and cakes. We also have a huge selection of craft stalls including handmade cards, jewellery, candles, plants and handmade chocolates. Fancy some homemade jam, marmalade, pickles or honey. This is the place to come. Denis Hills the butcher from Frindsbury Hill has supported the market since we started and is always happy to take orders for either delivery direct to your door or to be brought along to the next market. As well as meat from local sources he can also supply more adventurous cuts including Kangaroo, Wild Boar and Venison but please don't expect him to come along with this unless you specifically order it! As always refreshments are available and these include Lesley's homemade scones. Last month's raffle prizes were won by June Collins - £30 meat voucher and Gary Thomas - £15 Easter basket. For more details please ring Margaret Church on 253709.

Hayfever, end the misery!

Hayfever, or allergic rhinitis, is one of Summer's miseries and the most common allergy in the UK. One in five people suffer at some point in their lives and what's more, the number of people affected by allergies is increasing by about 5% every year.

Homeopathy can help **Hayfever** in different ways. During the **Hayfever** season carefully selected remedies can help to alleviate the symptoms. However, remedies taken in December, getting them into the system before the season begins, are more effective long term, reducing or eliminating the problem altogether for the future.

If you suffer from **Hayfever**, or know someone who does, and are looking for a drug free alternative, contact:

Wanda Wright, LCH, MARH,
Qualified, Registered Homeopath
5 Cooling Road,
High Halstow,
Tel: 01634 252284
Email: bespokehomeopathy@yahoo.co.uk.

Dates for Diary

Every Other Tuesday:

Mobile Library

12:30/12:50

Village Hall Car Park

12:55/1:15

Northwood Ave.

Every Wednesday:

Painting & Drawing for Beginners

10.00

Memorial Hall

Every Thursday:

Mother and Toddler's

09.30

Memorial Hall

Sugar Babes

19.00

Memorial Hall

Every Saturday:

Karmann Dancers

09.00

Memorial Hall

Other Dates

Saturday 2nd

09.30

Farmers Market

Village Hall

Wednesday 6th

19:30

Women's Institute

Memorial Hall

Tuesday 12th

12.15

Open House

Memorial Hall

Tuesday 12th

20.00

Gardening Club

Memorial Hall

Wednesday 13th

20:00

Parish Council

Meeting

Memorial Hall

Saturday 16th

08:30

Project Morning

Village Hall

Saturday 23rd

18:30

Nicky Moore

Village Hall

Wednesday 27th

14:00

Friendly Club

Memorial Hall

Friday 29th

20:00

Quiz Night

Memorial Hall

Harveys Builders Ltd

FOR ALL YOUR BUILDING NEEDS

Extensions • Windows & Doors • Fencing • Brickwork
Conservatories • Glazing • Fitted Kitchens • Carpentry • Roofing
Bathroom Suites • Tiling • Plastering • Painting • Electrical Work
Driveways • Block Paving • Re-Pointing • Plumbing
PVCu Soffits, Fascias & Guttering • Porches • Burglar Alarm
Sealed Unit & Drain Work • Flat Felt Roofs
Security Locks • Domestic & Commercial
Insurance Work Undertaken • Fully Insured



*Over 18 years
experience*



For quality work at competitive rates contact:

TEL: 01634 222202 • MOBILE 07768 905800

Email: harveysbuilders@fsmail.net • Fax: 01634 222212

Havisham House, Main Road, Cooling,
Rochester, Kent ME3 8DH

Friendly Club

Gill Ellen gave the members a very interesting talk on The Medway Queen. Gill had slides showing her as she was, and how she was converted to help with the war, especially Dunkirk.

We were so impressed with the work of restoration that the club gave a donation to help with this work. It is hoped when it is finished she will be berthed at Chatham Dockyard.

Our next meeting is on Wednesday 27 May, and this will be Bring and Buy, so don't forget to hunt out all your unwanted items.

Memorial Hall

It is hoped that by the time you read this the new Men's urinals will be in use, these will be in the space that was the shower room, there will be two urinals and a hand wash basin, it will be a great improvement on the existing men's facilities.

It is also hoped that during the month of May we will be able to organise a 'clean up day' this will include washing walls, and in places giving them a lick of paint.

Garden Club

The April meeting was a very interesting talk on Butterfly's and Wildlife, it was a Husband and wife, the wife was previously a Nurseryman so was interested in all the plants, and the Husband was interacting by telling us which garden wildlife and butterfly's were attracted to the plants being described, it was very well done.

Our next meeting is on Tuesday 12 May, when it is our Bring and Buy. This is for anything for the garden, whether it is plants, seedlings, shrubs that you have divided or even unwanted tools. But Please NO FLOWER POTS they do not sell and we then have to dispose of them.

Pat Hillman

TOM CROZER

PGA PROFESSIONAL



Lesson Charges

1 Session (30mins) £15
(Juniors £10 25mins)

3 Sessions £39

6 Sessions £75

9 Sessions £110

Deangate Ridge Golf Complex
Duxcourt Road
Hoo Rochester
Kent
ME3 8RZ

Tel: 01634 251180
07595269025
tom@crozer.eu

Your Parish Councillors

George Crozer, Chair 01634 250286

e.mail: george@highhalstow.org.uk

Gary Thomas, Vice Chair 01634 252812

e.mail: gary.thomas@medway.gov.uk

Ray Collins 01634 250105

Pat Hillman 01634 251064

Carl Mitchell 01634 250911

Martin Mitchell 01634 229404

Lesley Munday 01634 250276

Margaret Shuter 01634 251196

Your councillors may also be contacted
through the Parish Clerk:

Mrs Roxana Brammer 01474 871269

Red Dog
Forthcoming events for May

3rd May Bingo

9th May Entertainment (to be arranged)

19th May Ladies Night
Sparkles - Virgin V - Anne Summers

21st May Darts Knockout

23rd May Karaoke

25th May Bank Holiday Day
Bar-B-Q & Bouncy Castle

Two meals for £10.00
Monday, Tuesday, Wednesday
Lunchtime

Kids Eat Free on Sundays with
Paying Adults

01634 250336

Readers Letters

Please send in your letters by e.mail to
editor@highhalstow.org or by hand to 8
Marsh Crescent, High Halstow. Name and
addresses can be withheld on request.

Queen B & The Redfords

- Don't Stop me Now -

- Another one Bites the Dust -

- I Want to Break Free -

And many more of the other classic Queen
and Freddie Mercury hits. It is with great
pleasure that the Village Hall Committee
can announce that the Queen tribute band
'Queen B' will be returning to the Village
Hall on October 17th. And also appearing
on the same night will be The Redfords
with their blend of classic greats and
modern day hits, listen to them at
theredfords.net.

More details to follow shortly..

Need to Hire a Hall?

If you are interested in hiring either of
the halls in the village please contact :
Memorial Hall - Pat Hillman 251064
Village Hall - Ann Smith 251914

**HIGH HALSTOW PRIMARY SCHOOL
SUMMER FAIR**

SATURDAY 27TH JUNE 2009

1PM - 4PM

**LOTS OF
STALLS, GAMES,
FUN, MUSIC,
ENTERTAINMENT & PRIZES**

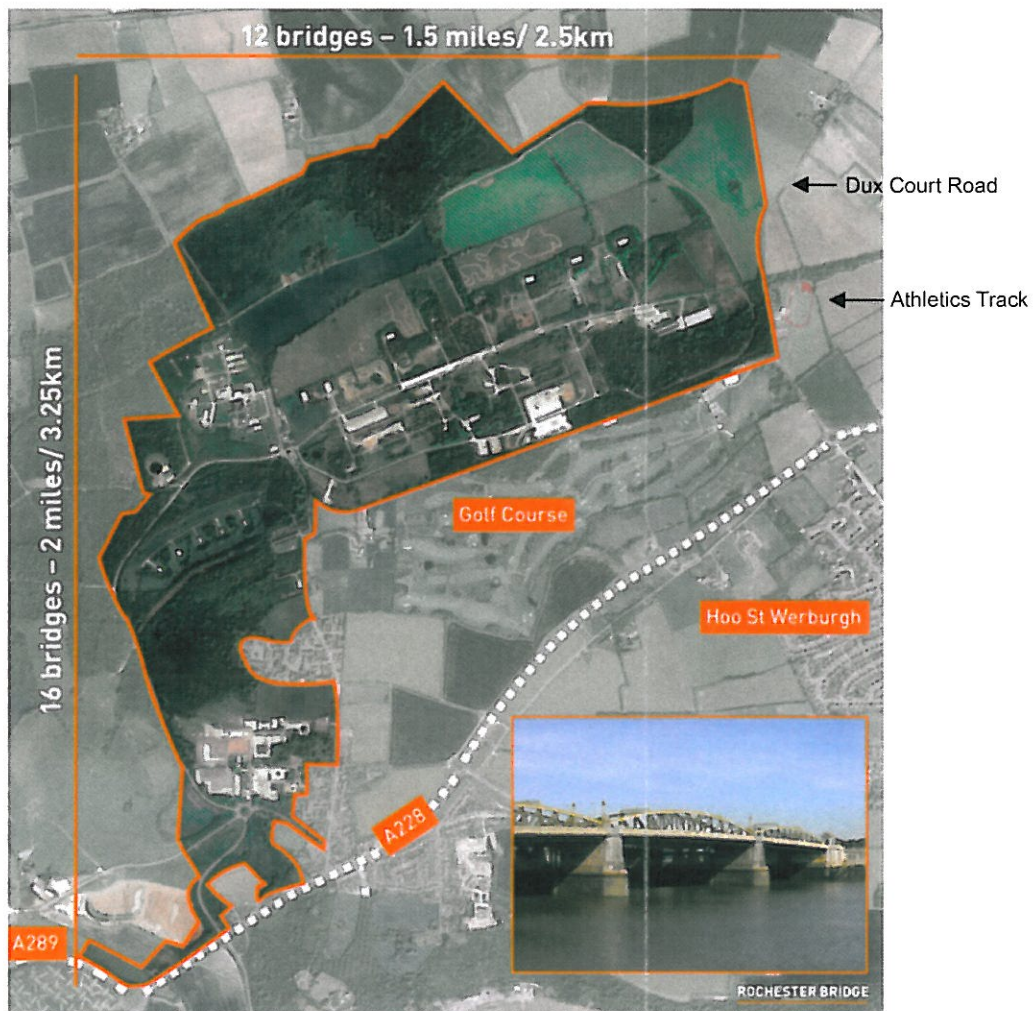
**PLEASE CALL WENDA ON
253169
IF YOU WOULD LIKE A STALL**

Note from the Editor

The High Halstow Times is a friendly point of
contact and all views expressed are those of
the individual. No letter will be published
without the name and address of the writer
being supplied to the editor, although this
information may be withheld from appearing
in the HHT upon request. If you have a
matter for complaint, it should be brought to
the attention of the Parish Council, which
meets on the second Wednesday of every
month, at 8pm in the Memorial Hall.
Members of the public are always welcome.

Advertising rates are £15 per quarter page
per edition; £30 per half page per edition.

Proposed development at Lodge Hill, Chattenden



The Development Potential:

- The site has been identified in Medway Council's emerging Core Strategy as a location for a new settlement.
- Medway Council's Core Strategy will set out the parameters of development in terms of approximate number of new homes, employment facilities and community opportunities.
- In May 2008 Land Securities was selected as Land Sale Delivery Partner by Defence Estates and tasked with realising the site's redevelopment potential.

The Timescales:

June/July 2009: workshops

October/November 2009: display to show the emerging masterplan

2011: submission of the first outline planning application to Medway Council

2011: start of infrastructure works subject to planning permission

2012 onwards: sale of land to residential and commercial developers

Take the Opportunity to Get Involved:

Visit the website www.lodgehill.info

Register to participate in workshops on specific subjects either at the website or on Tel: 0845 683 2544.

Contributions for June should be sent by 22nd May to:
Carl Mitchell, 8 Marsh Crescent, High Halstow ME3 8TJ
or e.mail to editor@highhalstow.org.uk