



High Halstow TIMES



Home of the Heron

May 2015

Chairman's Annual Report

As presented at the Annual Parish Meeting on Wednesday 22nd April

This meeting is of course the last **Annual Parish Meeting** before the elections, where there is a real opportunity to change the incumbent political status quo.

Anyone from the community can step forward, qualify before the electoral commission, join opponents on the hustings, traipse endlessly through the streets, knocking on doors and listening politely to constituents. Only to wait a seeming lifetime in the early hours of the morning at the infamous counting table to ascertain if they have been elevated by their peers to the dizzy heights of the third tier of government's unpaid, thankless position of "Parish Councillor"...!! .

Suffice it to say, for some reason that escapes me, there has not been a stampede of candidates sufficient to cause a vote. Strange don't you think??!! This means that the few who looked over the parapet will make up the High Halstow Parish Council for the next four years.

To those councillors who have served this village in the past four years or so I say thank you on behalf of the whole community...!! It is as well pointing out at this stage that members of the Parish Council serve without remuneration and their time is given freely and enthusiastically.

The Council will not look exactly the same as it does tonight. There will be some old faces, some new faces and some retirements. Sadly Lesley and Gary will be standing down and will be sorely missed.

Lesley Munday who came to this village in 1973 has served on this Council twice, first during 80's and lately from 2007 till the present day. She was and continues to be an avid supporter of Community life and remains involved, in varying degrees, with many activities within the village.

She will be missed as an active contributor to this forum but I'm sure will continue to have a voice from the gallery. Thank you too Lesley for the wonderful spread you have laid on tonight...!! A worthy use indeed of the Chairman's allowance.

Gary Thomas, Vice Chairman for the past, at least 15 years, has been a friend, confidante and pillar of strength to me personally, and a real asset to this Council and the community as a whole. Having been instrumental in many if not all of the projects undertaken by this Council. Thankfully he intends to remain active as Chairman of the Village Hall committee and newly formed Friends of St Margaret's.

The pressures of recent government cuts however has meant that Gary has had to take on more responsibilities at work leaving him less time for family and the local community.

I will at this point add **Ray Collins** to the list and take the opportunity to thank him for all his on-going efforts to make High Halstow a better place. Ray had not put himself forward for re-election. He unwittingly fell foul of the published date mistakenly issued by the authority and was late lodging his paper work. I thankfully understand that Ray will put himself up for co-option to the Council as soon as possible, so we will hopefully see him back with us soon.

Our staff

I pay tribute again on your behalf to **Margaret Church** who has left our employ this year, she has for many years been our wages clerk and continues to work hard for this village from her home in Haywards Heath. Such is the pull of friendship and community we have here...!!

I thank **Jack and John** for keeping our streets clear of rubbish. Its nice to see Jack back after a short illness and I would also thank his daughter for volunteering and easing him back into his duties...!!

Continued inside on page 5 along with other annual reports....

High Halstow Friendly Club

Our next meeting is on Wednesday 27th May at 2pm in the Memorial Hall. We will be entertained by a Pearly King and Queen with the usual refreshments, a raffle and of course good company. Why not give us a try, all visitors are made very welcome.

Holiday to Bournemouth

Would you be interested in a 6 day coach holiday to Bournemouth? Sunday 13th September to Friday 18th. Twin and double rooms available. Price includes return coach from the village with 2/3 excursions during the week, on half board basis. For more information please contact me on 01634 250677.

Margaret Whitebread

What Amazing Speakers

Last month we heard about the Rochester Bridge Trust from its CEO. She was superb, covering 200 years of history in just under the hour. So much information and so well presented. Their premises on the Esplanade will be open to the public on the Heritage days in September, so we can see some of the papers etc that she spoke of.

Four WI ladies went to Tunbridge Wells for the County Annual Meeting. The morning speaker was the author of a book which has been made into a TV series called 'Homefires' shortly to be shown on ITV. We were left speechless by the amazing, very elegant lady that with absolute dogged determination fought her way to become the first female fast jet pilot in the RAF. She saw action in the 2nd Iraq war flying the Tornado.

Back down to earth, the WI monthly lunch was at The Hogarth in Grain. Another pub that has recently changed hands and that we can highly recommend. The food was excellent, service faultless and by summer the garden will be ready for outdoor dining. May is our annual meeting when we will enjoy cheese and wine, together with our more usual refreshments.

We meet at 7:30 on May 6th in the Memorial Hall. New faces are always welcome.

Friends of St Margaret's

Annual General Meeting

Date: May 27th

Time: 19:30

Venue: St Margaret's Church

Why not come along and find out what has happened over the past year.

High Halstow & District Gardening Club

Members enjoyed a very enjoyable talk from Richard King recounting his travels around the world on a double decker bus. It seems the major planning was all arranged from the pub!

We are looking forward to our meeting on Tuesday 12th May when Verity Thompson will talk to us on 'Walking the Camino'.

We are busy making arrangements for the annual show in August and in addition to the two outings that have been arranged, Marj Ives is arranging an afternoon tea in July.

You would be very welcome to join us at any of our meetings on the second Tuesday at the Memorial Hall, High Halstow from 8.00 pm. Membership is £5.00 per year but if you wish to come to a particular meeting then the fee for non-members is £1.50 for the meeting.

High Halstow Memorial Hall

As most people in the village will know, Margaret Church has moved away from the area, as a result of which she has resigned her post as Treasurer, which she has held for the last 15 years and also organises the quiz nights in the hall. In recognition of her services, the Trustees and Committee were pleased to present her with a card and vouchers. Margaret has agreed to carry on with quiz nights.

We would like to mention that during school term time Saturdays in the hall are occupied by Karmann Dancers until 3 30pm, in the circumstances bookings for parties can only be after that time. Sundays are usually available for hire.

Memorial Hall Committee

Kings Kitchen

A Coffee and Cake Café
for the Whole Village.

Open 10.00am - 1.00pm
every Tuesday
in the Memorial Hall.

Why not come in and enjoy a
cuppa and a chat.

A warm welcome awaits you.

High Halstow Hikers

Our April walk started and finished and the Old Leather Bottle pub in Cobham made famous in Dicken's Pickwick Papers. The expectation was that we would experience carpets of bluebells but the cold weather for the few weeks beforehand meant that they were yet to show themselves. (The warmer weather since has made for an excellent display in our own Northward Hill at the time of writing 22nd April). The fourteen of us nonetheless had enjoyed a very variable walk, initially through Ashenbank Woods to the north of Cobham. There are many remnants of the 2nd WW RAF station as well as A Bronze Age Bowl Barrow – a Scheduled Ancient Monument dating from around 1500 – 2400 BC. These are well-described by several notice boards. We then walked across the open expanse of the grounds of Cobham Hall and then round the edge of Rochester and Cobham Golf Course to emerge close to the Darnley Mausoleum which has been renovated and is very impressive. On coming out at the farm at the end of Lodge Lane we found that the National Trust has created an excellent display including video recordings that describe the history of the Mausoleum and the surrounding area. Thanks are due to Alan for leading a very interesting nearby walk of about 6 miles with aspects that were new to almost all of us.



Darnley Mausoleum

On Sunday 10th May we will take a walk starting at 10.00am around Hadlow near Tonbridge. We will start from the Square, Hadlow which is at the junction of Church St off the main Maidstone-Tonbridge road (A26). Church St is a left turn off A26 towards St Mary's Church (TN11 0DB). Parking is on the road. Please note that our June walk will be on the FIRST Sunday, ie 7th, and will be one from High Halstow with full details being provided next month.

Enquires about any of the walks can be made on 01634-254428 or

mitch.dowsett@btopenworld.com.

High Halstow Village Hall

Stage Works

The stage work has started with the curtains to be ordered soon. This has been achievable with monies raised by Dramarama. This will be another improvement to the Hall so many thanks and watch this space for further news.

Quiz 10th April

What a Quiz!! £320 raised with the hall packed (I think this is the most). Many thanks to Margaret, Lesley and John for continuing to run this very successful event. Apologies to Lesley for having to read my writing, which is bad at the best of times but even worse with no glasses. Though I don't think our team can use my handwriting as the reason for us coming last!

Hiring Facilities

We have been asked to clarify that you can book the small room (Green Room) on its own should your group not require the main hall. For example if there is badminton being played in the main hall you could still hire the Green Room at the same time. For full details please contact Crystal on 251849.

Annual General Meeting

With the AGM on 13th May the Committee will be approaching the regular users of the Hall to come along and provide additional support to the Committee. It would be appreciated if the work in keeping the hall going is shared with the various groups so not only the improvements can take place but to share the running of the Hall. This is your chance to hear what has happened over the past year and also ask questions.

Don't be Shy!

Have you got something that you want to get off your chest! Does your club need to tell the world about what's happening. Do you have an event to promote. Is there a story about the village which just needs to be told. Do you know an interesting fact about High Halstow you would like to share. Are you a poet without anyone knowing it! Do you have an old bike, pram, life size Peter Andre model that you would like to sell. Whatever it is then drop me a line at editor@highhalstow.org.uk and we'll publish your article in the HHT. Don't be slow talk to High Halstow...

Dog Walkers

Our rights of way and green spaces are for us all to enjoy especially this time of year. Please be aware that if you are exercising your dog it should be under control at all times when in a public place.

High Halstow Cricket Club

May 2015

The start of the new season was preceded by the best weather for pre-season groundwork I can remember. For about 6 weeks it was possible to plan the work and arrive at 25th April with the ground, and especially the square, in the best condition possible. The fact that the first home game of the season yielded nearly 480 runs, gave this groundsman great satisfaction. It was especially pleasing to see the home side chase down 236 with a degree of comfort not seen here for some time!

But this is England, so the rain came and spoiled the second game of the weekend. However the future may be brighter, various long term forecasts suggest a warm summer. The ideal would be overnight rain early in the week, followed by 4 or 5 dry days and nights, before clouding over again on Sunday evenings. I am afraid such events will only add to overhead disruption as a number of four-legged pink creatures cross the sky!

The 1st XI start their Kent Regional League Premier Division programme on 9th May with a home game against Bexley, but this is preceded by a friendly against Sidcup on 2nd May. The Sunday League programme begins with a home game against Frindsbury on 3rd May. The club continues to seek success in the National Village Knock Out Cup, but the game on 17th May against Sibton Park will be a major challenge, as they are currently 5 divisions above us in the Kent league structure.

Once again, we have entered colts teams at U11, U13, U15 and U17 in the Medway Youth League. There is always space for new players within these (and indeed the adult) sides, so please get in touch or visit the ground. For the youngest, Sunday morning at 10 is a fun time as boys and girls get their first introduction to the sport.

As has become usual, the club and village are hosting the Medway Youth Games primary school cricket tournament on 21st May. Once again, we expect approximately 38 schools to take part on 16 pitches laid out on the cricket ground and the Recreation Ground. To cap a very busy period, we are hosting (and defending) the Medway T20 tournament on 25th May. With the sun shining and barbecue alight it is a great way to spend all or part of the day – admission is free, but alas the refreshments are not!

Full details of the clubs fixtures and results can be found at www.highhalstow.play-cricket.com. Follow the fortunes of friends, family and others through the statistics pages, bring a chair (and picnic) to the ground or simply lean on the fence for a few moments to become involved in the Peninsular's only remaining cricket club, in its 125th recorded year.

David Laphorn
Life President



THE ALL NEW HIGH HALSTOW MARKET

TAKING PLACE AT THE MEMORIAL HALL

DATES: SAT 11TH APRIL AND SAT 2ND MAY

10 AM UNTIL 2PM

STALLS INCLUDING:

HAND MADE CARDS, MAKE UP, LUCKY DIP, BRIC-A-BRAC, DRAGON AND FAIRY ORNAMENTS, HAND BAGS, CAKES, AVON AND MUCH, MUCH MORE !!!!

REFRESHMENTS WILL BE AVAILABLE

RAFFLE FOR THE FRIENDLY CLUB AND CHARITY

WHY NOT JOIN US AND GRAB A BARGAIN !!



DEJA VU SPIRITUAL CENTRE

*Everyone has an Angel, given to us from the start.
Trust and faith is what we need, to hear them in our hearts. ♥*

Every Sunday

Please join us to see mediumship demonstrated by different medium's each week. 6.30-9.30pm ONLY £3.00 ENTRY FEE.

RAFFLE PRIZES TO BE WON AND REFRESHMENTS AVAILABLE.

**RECREATION HALL, THE STREET
HIGH HALSTOW.
ROCHESTER
ME3 8SQ**

Chairmans Annual Reported (continued from front page)

I must point out that neither Jack nor John are responsible for the growing amount of rubbish or fly tipping we find on the periphery of our village, the major roads do not fall within their remit. This problem seems to be cyclic and it is here again...!! I wish we could re-start our village litter picking, although I don't think it will be possible under the umbrella of the Parish Council because of the insurance implications. We should review at this in the coming months to see what can be done.. ?? It's a good way to exercise for 90 mins and gives you a great sense of well being, and a job well done!!

Thank you once again to **Roxana** for keeping us on the straight and narrow.!

Of course I cannot move on without thanking the Officers and Councillors of Medway for their past and ongoing contributions to High Halstow this year. Because the Elections are ongoing it would be improper for me to mention any individuals.

Generally

The dissemination of Parish information is a very important part of the Councils work and a part, I believe, we can improve on. With the arrival of high speed broadband we can now say that the village has truly arrived into the twenty first century and we can perhaps now take more advantage of the vast amount and ever popular social media.. Lets not however, forget to be grateful for the more traditional forms of communications.

Thank you, Carl Mitchell (Editor) and Nigel Smith and the team of volunteers who publish and distribute the **High Halstow Times** and may I add a thanks to those of you who contribute to its pages including our advertisers.

Thank you to those who look after and maintain the fabric and contents of our notice boards and village signs. The notice boards are of course still essential in the publication of Proper Public Notices...!! Strange when you think of this super fast digital world that our ancient old Village notice boards are one of the cornerstones of government's mode of communication..? How nice too are the displays of flowers that now flourish at the base of our village signs and are loving tended by the gardening club. Thank you.!

I was pleased to see that the number of entries to the photographic competition continues to grow and to show the village in all its splendour. Please keep snapping those odd yet familiar views of our village and its inhabitants. You have only to look and see how popular old pictures are to a community by looking at the Facebook page "**Hoo St Werburgh A Historic View**"

I would also say thanks to the person or persons who had the foresight to start the **High Halstow Village Appreciation group** on Facebook . It is used by 431 at present and a good place to air your views. Its not under any control from the Parish Council and long may it continue.

Finally the path to the Christmas Lane bus stop has been approved, installed and funded by Medway Council.

Thanks to Brian The **footpath** across the Recreation ground from Ruggles Close to the Street has been approved and funding is in place. Work will take place around July this year.

After a long campaign by the youngster from the village, championed by Chris Watson and funded jointly by the Parish, Medway Council and AW Gotham a new **skate board half pipe** has been installed next to the kick wall and it is proving most popular.

Our **Allotments** are fully utilised and there is a waiting list of would-be market gardeners.

Parish Council Surgeries at **Kings Kitchen** continue to provide a steady flow of comment.

Your Parish also continues to be represented at **The Rural Liaison Group** where all Parish Councils and Medway Council come together on a regular basis.

The **Police liaison forum** and **Kent association of Parish Councils**.

You may know that if you are planning home improvements that require Planning permission, the Parish

Council will be asked to comment. A Parish Councillor will generally visit your neighbours and examine proposals carefully before presenting facts to this Council as a whole. After a decision is reached the Council will comment to the local planning officer. The Parish Council does not have a right to veto any application but its negative comment will trigger the application going to Committee. You can if you wish come along to the Parish council and ask to make representation.

This was the year we decided pretty much unanimously ... Not to have a **broadband mast** in the car park !!!... Choosing instead to wait for Open-Reach to painfully make their way up Town Hill inch by inch, gladly they have arrived safe and sound and the village is all the better for it..!!

I note that this the Memorial hall continues to be well-supported and used and has a special place in the hearts of many in this village. As you know it was built in the memory of those villagers who returned from the Great War.

I'm particularly glad to see we are now in the final phase of the up-grade of our **Village Hall**.

The Hall was originally highlighted in the **2001 Village appraisal** as the most important village asset. With the set back that because of the prosperous nature of High Halstow, we learnt that the realisation of external funding for a new hall was out of the question but after a lot of hard work, fund raising ,support from the community and this Council, we are at last, thankfully, seeing the corner turned in the refurbishment of the original building. Profits and bookings are buoyant and the Hall will soon be fully fit to marry in (or at least have the reception in) !! Although I was involved as chairman at the outset, all of the time, tenacity and sheer hard work has been led and co-ordinated by Gary assisted by the maintenance team Ray Collins and Co.

Contentiously, Lodge Hill and the potential development of 5000 new homes on our door step continues to linger in the shadows. The Planning application is currently once again with the Inspector. Although the proposal contravenes National Planning Policy, the developers backed by Medway Council have confidentially offered to performs a task, even King Canute would have thought fool-hardy, by moving 1% of this country's nightingale population across the water to Essex..

On a serious note although we must all be aware that the need for affordable housing in the country is high on the agenda of whatever local Council or Government we end up with, we must be responsible and stick up for what we think is right. If we who live within the internationally acclaimed and protected "North Kent Marshes' don't stand up for our Natural Heritage who will ...??

George Crozer (Chairman)
High Halstow Parish Council

Annual report for Youth Club April 2015

High Halstow Youth Club is celebrating its 22nd birthday in April. The Club is for local children aged 9 and upwards and meets each Tuesday (term time only) from 7pm till 8.45pm in the Recreation Hall. New members from the waiting list are invited to join at various times throughout the year as spaces become available. We encourage parents to give us the names of their eight year olds so that they can be put on the waiting list.

The same popular activities continue to be offered at the club but we have also introduced some new ones throughout the year. There have been some themed evenings (eg. Halloween, Comic Relief, karate, indoor sports) along with the usual football or basket ball in the hall, table tennis in the 'green room', and also various craft activities. Children can 'dip in' or 'dip out' of each activity as they choose to. These activities can only be offered if there are enough adult helpers to supervise the different areas. Unfortunately the number of adult helpers has dropped lately, so there have been occasions when areas of the club have had to be closed.

The tuck shop is open each week from about 7.30 and continues to be very popular. We try to ring the changes with the sweets that we stock; also we take note of what the children like and are willing to pay for. We do not sell lollipops or bubble gum and we are careful about products containing nuts.

For the third year running the club took part in the Christmas Tree Festival in December, when all the tree decorations were hand made by the children.

Now that the clocks have changed and the evenings are lighter we hope to start letting the children play outside on the recreation ground. Again this depends on having enough helpers as the inside of the building will still need supervision.

This has been the biggest challenge for the club during this year so we are always on the lookout for new volunteers. We work on a rota system and each volunteer decides for themselves how frequently they would like to come and help. If anyone reading this feels that they could help, please get in touch; we will arrange for you to visit the Club and we can have a chat about what sorts of things you might want to be involved in. We will arrange a DBS check for you (used to be called a CRB check) and also various training is available (free of charge to volunteers).

We are now hopeful that new people will come forward to enable the club to be open each week as it is such a worthwhile meeting place for local young people. Even if you can only offer a few hours each month please get in touch and arrange to visit. Also, if you have a particular skill that the club's youngsters might benefit from please let us know.

Thank you.

Chris Peek 01634 252604 (email chris.peek@lineone.net)

Cat Archer 07749 178530 (email carcher1391@gmail.com)

High Halstow Village Hall Annual Report

Another year has gone by and I am pleased to say, at the time of writing this report that we are looking to receive the tender prices for the third stage of the refurbishment programme. This part includes the kitchen, new bar, main entrance and stairs. Whether we have enough funds to kit out the new areas is unlikely but at this stage we are aiming to complete the building works. This has been possible as grants received from the Parish Council and Medway Council for which we are extremely grateful for the continued support.

We have lost two valued committee members this year, Stephen Gwilt and Margaret Church. As previously said Stephen's played a major role in ensuring finances were available for Phase Two of the refurbishment programme. In addition following an idea from Stephen, we now have Broadband in the Hall which is another facility that can be used within the Hall. Without this generous support we would not be close to finishing the project and for that we should all be extremely grateful.

Margaret has played a major role, not only on the Committee but with event-organising over the years. Even though she has weaned herself first from High Halstow, then Medway now it is Kent's turn as she moves completely out of the area, we will still see Margaret as she will continue to support the Hall with the quarterly Quiz. We wish her well in her new chapter and look forward to having some questions at the Quiz I can actually answer (I can dream can't I).

The first impression of the Hall is so important and much credit must go to Elaine Slatcher, our cleaner who does a tremendous job in keeping the hall clean, so many thanks. Not many people see her carry out the work but I can tell her it is very much appreciated by not just the Committee but by users as well.

Over the past year we have had a record number of bookings which will only increase as the refurbishment works finish. The reason we were supported by external funders, was the belief that the usage of the hall by the community would increase and so it has proven to be the case. Over the last year there were 235 bookings, which I can tell you is a major increase over the last few years. Much credit for this must go to our Booking Clerk, Crystal Wakefield, who shows prospective users around the hall, makes the bookings, takes the deposits, answers the hirers questions etc. Without this level of commitment we would not have been able to make this happen, so again many thanks.

Ray Collins again has proved an invaluable member of the Committee and quietly goes about getting things done. Be it fitting new handrails, building Notice Boards, solving storage space issues, painting, repairing, dealing with the builders etc etc., Ray has been there improving the facility and saving money along the way quietly and efficiently.

Lesley Munday, my partner in crime in the bars the Hall runs, secretary, café organiser etc as previously said what would we, and me in particular, do without you? Lesley is an avid supporter of the Hall and the groups that use it and her time and energy should be applauded.

Through a grant kindly awarded to Dramarama from The Relief In Need, the Hall is benefiting from works to the stage which ultimately will include new Front Curtains. George Crozer has taken up the responsibility of

dealing with the various contractors and arranging for the work to be carried out. Along with Ray, he has fitted the new support truss system which will house the lighting and additional curtains. This will be another valuable asset to the hall so thank you George for ensuring this moves forward as well as your continued support to the Hall.

Fund raising activities included:

- 1 Village Market. Once again many thanks to Michelle King for the organising of this event, Sadly due to lower attendances this event has stopped for the time being Many thanks to the stallholders who have come out each time and supported this event over the years.
- 2 Quizathons. Many thanks to Margaret as well as Lesley Munday and John Pink for this event. Over £850 was raised during the year from this event as it so well supported.
- 3 High Halstow Open. This was the second year this event was held and was held in conjunction with the PTA. A terrific day was had by all and look forward to this event continuing.
- 4 Tea at the Blitz. A joint event involving Dramarama saw an event put on a Sunday afternoon. The hall was packed, entertained and well fed. There are too many to thank individually for this event but please accept my thanks for all of you who made this happen.
- 5 Boot Fair. We had a Boot Fair in March kindly organised by Margaret and along with the Silent Auction raised over £300.
- 6 Calendars. The sale of the calendars each year is a welcome addition to the funds and thanks in particular to Carl Mitchell who donates the printing costs as well is also much appreciated.
- 7 Nicky Moore and Friends. There was not the annual event last year for this due to Nicky not being well. The Committee would like to pass on our good wishes and hope this event can return at a later stage.

For this year we are still looking at other ideas for events, which will not only raise money but help bring the community together, so please keep an eye out in the High Halstow Times.

Many thanks must go to the users of the hall be it a regular or one-off users. Community groups in particular help make the Village what it is and you should all be proud of the part you play in making this the special place it is to live.

Again I hope the coming year is not too disruptive and look forward to next year.

Thank you all

Gary Thomas
High Halstow Village Hall Chairman

Dramarama Annual Report

We have had another successful year, performing an afternoon tea show 'Tea at the Blitz' in September 2014, and the pantomime 'Robinson Crusoe and the Pirates' in January 2015. The 'Tea at the Blitz' was a new format for us, and we performed a Second World War themed show followed by an afternoon tea of home-made sandwiches, cakes and plenty of tea, the format was very popular and we are expanding it this year with our 'Taste of the Musicals' in September 2015. Robinson Crusoe was a great success selling out the Saturday matinee and Saturday evening shows within weeks of tickets going on sale. We are looking at the feasibility of performing a Sunday matinee as the Saturday one is so popular. Alongside our own events, Dramarama performed at the Allhallows fete, the Rectory Garden Party and both Allhallows and High Halstow Christmas Tree Festivals.

A first for us this year will be the murder mystery evening we are performing in November, we think it's going to be a great evening of entertainment and is bound to have some twists along the way, with six different possible endings not even the caste will know who done it! If you are interested in finding out more about our group, please contact Pauline via email mart8311@aol.com

Friends of St Margaret's Church Annual Report 2014/15

This is the second Chairman's report looking back over the past year of the Friends

Subscriptions continue to grow with a steady stream of income coming in each month

Having said that we have managed to raise a credible £975 from subscriptions either by cheque, Standing Order or Direct Debit. Our monthly Subscriptions now equate to £130, which should rise on receipt of the new forms. I must thank all of you who have completed the forms or sent through cheques. I must thank May Smitherman who has been extremely patient with me in trying to get her subscription sorted – nearly there May

In terms of Fund raising events we had the following:

1 Cake Festival

This year saw the first High Halstow Cake Festival, with the work organised by June Collins. With nearly 50 cakes entered this by far exceeded the expectation of the Committee. Many thanks to June for organising, judges and all who entered and supported the event

2 Christmas Tree Festival

This was the third year this event has been put on and is well on its way to becoming a regular community event. Many thanks to the various groups and individuals who put a tree in for the festival as well as Dramarama, Karmann Dancers and the Church Choir for the entertainment.

3 Santa's Visit

Again Santa came to High Halstow and this year the proceeds went to the Friends. Each year the event seems to get bigger and bigger and thanks to Santa and his helpers for making this a special event

4 Christmas Cards

Ray Collins again organised the printing and sales of Christmas Cards for the charity. They are such great reminders of the Village we live in especially for people who have moved away and still receive a card

Expenditure again has been kept to a minimum with money raised this year going towards work on the notice Boards, the brambles backing on to Forge Lane and money specifically set aside for the roof.

We understand the Quinquennial will be carried out by the Church this coming year. Within the Church of England every church building must be inspected by an architect or chartered building surveyor approved by the Diocesan Advisory Committee (DAC) every five years. This regular system of review is designed to ensure that church buildings are kept in good repair. We await issues raised from this report which we can help with.

Thank you Fred and Hazel Beringer for the use of their house for the meetings including the refreshments. Thanks must go to Mike Meredith, June Collins, George Crozer, Bob Prichard and Lesley Munday for their continued support during the past year.

Many thanks to all of you who have supported the Charity either with your subscriptions, help or supporting of events, it really is appreciated by all on the Committee.

With your continued support we will ensure that the Church is here for many years to come.

Gary Thomas
Friends of St Margaret's Church Chairman

Dates for Diary

Every Tuesday:

King's Kitchen

10:00

Memorial Hall

Bell Ringers

19:30

St Margaret's

Church

Every Thursday:

Mother and Toddler's

09.00

Memorial Hall

Sugar Babes

19.00

Memorial Hall

Every Friday:

Pilates with Joy

14:15

Memorial Hall

Every Saturday:

Karmann Dancers

09.00

Memorial Hall

Every 4th Wednesday:

Friendly Club

14:00

Memorial Hall

Other Dates:

Sunday 3rd:

09:30

Family Service

St. Margaret's Church

Wednesday 6th:

19:30

Women's Institute

Memorial Hall

Sunday 10th:

High Halstow Hikers

Details in HHT

Tuesday 12th:

20:00

Gardening Club

Memorial Hall

Wednesday 13th:

18:30

Village Hall AGM

Village Hall

Wednesday 13th:

20:00

Parish Council

Meeting

Memorial Hall

Sunday 17th:

09:30

Family Service

St. Margaret's Church

Wednesday 27th:

19:30

FOSM AGM

St. Margaret's Church

Friday 29th:

20:00

Quiz Night

Memorial Hall

Learn GUITAR

Professional guitarist and guitar teacher offers 1 to 1 tuition. All ages and abilities welcome. Graduate of London Guitar Institute and playing experience includes The Who and Robbie Williams. Can inc practical, grades & theory.

CHRISTMAS VOUCHERS AND DEALS AVAILABLE
HOME VISITS OR AT HOME STUDIO IN CHRISTMAS LANE

Call Matthew 07967 125091

LOCAL ELECTRICIAN

Domestic + Commercial + Industrial
NAPIT PART P APPROVED ELECTRICIAN
Steve Waldie

Full & Part Rewires - Consumer unit changes - internal power sockets & lighting - External power & lighting - Bathroom fans - Testing & inspection - Alarm Systems
No Job Too Small - No Call Out Charge
All work fully insured and guaranteed

Tel 01634 253169 Mob 07833 251805

St. James' Sure Start Children's Centre
For families with children aged 0-5 years

Stay and Play
High Halstow Memorial Hall
Every
MONDAY
1.30pm - 3pm

Drop-in to this Stay and Play session for 0- 5year olds to enjoy fun activities with other families and to learn new skills with your child.

IF YOU WOULD LIKE FURTHER INFORMATION, PLEASE CONTACT:
St. James' Sure Start Children's Centre
St. James' Church of England Primary Academy High Street Isle of Grain ME3 0BS
01634 270341 E: childrenscentre@stjames.medway.sch.uk
www.stjamesisleofgrain.org.uk

Rochester Roofing

RE-ROOFING • REPAIRS
CHIMNEY WORK • LEAD WORK
SOFFITS & GUTTERING • TILING

Friendly reliable service, free inspection - fully insured

Contact Paul on: 07903 581926
paul@rochester-roofing.co.uk



Jonathan Computers

Contact Jonathan directly on the Office No: 01474 879878 or

Freephone: 0800 321 38 79

Email: sales@jonathancomputers.co.uk



REALLY IMPORTANT!!!!

Does your COMPUTER run....



Does this look familiar???



Currently from 8th April 2014*

Microsoft™ Support

for ALL XP™ Versions will discontinue!!!!

YOUR COMPUTER WILL BE AT SEVERE RISK!!!!

I Can upgrade or supply new computers with...**

- ☐ Windows™ 7 on.... and **NOT** the new unpopular Windows 8™ on!

* As currently stated by Microsoft™ as at 1st December 2013. **Subject to Old PC Specification.

You may become vulnerable to:

- ☐ Destructive Viruses!
- ☐ Banking Fraud!
- ☐ Total Computer Failure!
- ☐ On-Line Credit Card Theft!
- ☐ Identity Stolen!
- ☐ Being Spied On!

(All Antivirus products will cease to update at this time also)

If Running XP you will need to upgrade or replace your old PC To keep yourself Secure!!!**

**I Am Based In
High Halstow
So Can Be Quick
To Respond**

I will deal with you personally so I can provide you with the best service. I offer a fast and friendly service and explain any problems about your computer to you in an easy to understand way.

*Regards
Jonathan*

Village Hall Event Planner

The Village Hall Committee will be looking to put on a number of events for the coming year, below are dates already agreed

Annual General Meeting

**Wednesday 13th May
19:30 Village Hall**

Quizathons

**Friday 17th July
Friday 16th October**

Murder on the Peninsula

**Saturday 7th November
See details in HHT**

Sunday Services

**8:00am High Halstow
Holy Communion BCP**

**9:30am High Halstow
1st and 3rd Sundays All age worship
2nd and 5th Sundays morning prayer
4th Sunday Family Communion**

**6:30pm High Halstow
1st Sunday Holy Communion
3rd Sunday Informal worship
5th Sunday Joint Songs of Praise with Allhallows
See notice board for venue**

**Baptisms by arrangement
1st or 3rd Sunday of each month at 9:30am**

**For further information. Rev Stephen Gwilt 01634 250637
Or Email stephengwilt2@hotmail.co.uk**

Caring for the needs of the community for over 1000 years

Let us not give up meeting together, as some are in the habit of doing, but let us encourage one another - and all the more as you see the day of judgment approaching. Heb 10:25



Toddler Group

Come and join us for a cake & a coffee while the toddlers play!

A great way for Mums & Kids to make new friends.

Babies to 4 year olds, just £1 for two hours of play.

Every Thursday, 9am to 11am at the Memorial Hall, High Halstow.

For more details, call Natacha on 254178

Your first session is FREE!



High Halstow Pre-school

Modular Building, Primary School, Harrison Drive,
High Halstow, Rochester, Kent. ME3 8TF

01634 255088

Proprietor/Manager Mrs Anita Russell BA (Hons), EYPS

- ✓ 'Outstanding Provider' Ofsted
- ✓ 2009-10 Extensive Outdoor Facilities
- ✓ Excellent Links with Primary School
- ✓ Friendly, Qualified Staff
- ✓ Affordable Childcare

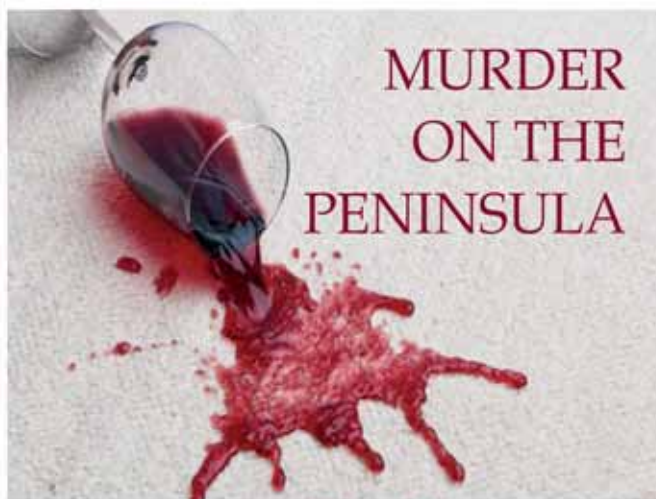
Open Weekdays, term time only
8.45 am - 3.30pm

Morning, lunch, afternoon and all day sessions available.

Children are funded for 5 free sessions the term following their third birthday.

Don't take Ofsted's word that we are an outstanding provider, come and see for yourself.

Ring 01634 255088



Murder Mystery Evening

"Salutè!" You're invited to the Heron Hall Wine Estates to celebrate the annual wine festival and grape harvest.

Saturday 7th November 2015

Doors @ 6:00pm
Show Starts @ 7:00pm

Tickets = £8.50*
including 3 course meal with licensed bar.

at High Halstow Recreation Hall
Tickets available from Joanne on 250911

Hosted by the HH Village Hall Committee
in partnership with Dramarama

* Tickets will not be available on the night.

Dramarama proudly presents A TASTE OF THE MUSICALS



An Evening Buffet or Afternoon Tea with songs and dances from the musicals, and a show.

Book a table with friends or family and enjoy the best of the West End in High Halstow

Evening Buffet Performance (with licensed bar)
Saturday 26th September at 7:30pm

Sunday Afternoon Tea Performance
Sunday 27th September at 3:00pm

at High Halstow Village Hall
Tickets £8 per person including buffet or afternoon tea.
Available from Wenda on 253169

Hoo Ness Yacht Club

HNYC is holding an Open Day under the banner of the RYA Push The Boat Out (PTBO) campaign on Sunday 17th May starting at 11:00am.

Through it we are inviting existing and would be sailors to visit us, see and hear what we have to offer and, weather permitting, take them on a short tour out to see our local river environment. For those who are new to sailing we will be offering the chance for an introductory sailing experience on one of our member's boats by registering their interest during the visit.

We are an RYA accredited Training Centre and in our training room we will be having a demonstration of the use of VHF yacht to shore radio and have other information about the RYA training courses we can offer.

We are a traditional and friendly club and although we are mainly yacht sailors we have some dinghy sailing members too. The PTBO Open Day is 'open' to existing and would-be sailors of all ages, young and not-so-young and we would particularly like to meet families with teenagers wishing to learn to sail.

For more information or to book prior to the event HNYC can be contacted by mobile on: 07780548804 via email: memsec@hooNESS.org.uk or via our website: www.hooNESS.org.uk



HH Village Website

Please visit the Parish Council website for everything about our village. You can see the minutes of your Parish Council or look up local groups in the village, past copies of the High Halstow Times, and pictures of recent events. Please note that there is now an RSS feed on the Parish Website where you can get automatic updates when the site is updated. Please visit www.highhalstow.org.uk and follow the instructions on the right hand side.

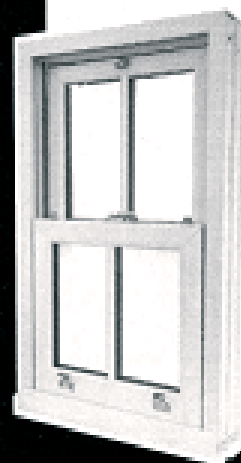
Local Groups and the Website

You can advertise your activities free of charge on this site just let us have the details. If your details need updating with either dates or details of events please let us know by emailing gary@highhalstow.org.uk. This can be used to keep your members informed and possibly attract new members to your group.

PAUL HUGHES

Double Glazing Repairs

NO CALL OUT CHARGE FREE ESTIMATES



Misted Units Replaced •

Cracked Units Replaced •

Broken Hinges •

Cat Flaps Fitted •

Locks Repaired •

Damaged Handles •

Doors Re-Adjusted •

Windows Fitted •

M: 07815 948637

H: 01634 256631



Based in High
Halstow
Contact Jade
07708 394979



Permanent Makeup is an advanced technique used to apply coloured hypoallergenic pigments into the dermal layer of the skin. The pigments are made from natural minerals making enhancements look very natural that can last for years but will fade over time.

Treatment areas:

Brows: Eyebrows frame the face, with the right shape & colour brows it can make you look years younger

Eyes: It can be difficult to apply eyeliner correctly & make it last all day. Define your eyes with eyeliner or lash enhancement.

Lips: Define & enhance your lips with a gorgeous lip liner, blush or full lip colour.

Book a free consultation to see how Permanent Makeup can help you.

www.serenitypermanentmakeup.co.uk

THE MEDWAY BIG RIDE

The Medway Big Ride is the fantastic opener to this year's 2015 Festival of Sport and returns on Sunday, 17 May 2015 bringing all forms of cycling to the people of Medway.

The day starts with a selection of Evans Cycles Sportives for serious riders. Cycling enthusiasts can choose a 75 mile, a 50 mile or a 30 mile route, all of which set off in the morning.

For those who don't consider themselves cyclists, but want to give a longer distance a go there's an Evans Cycles 13-mile route which sets off at 4pm.

From 4pm people can also enjoy:

- Children's sprint races
- Different types of innovative bikes
- Coaching with Wigmore Cycling Club
- Bikeability workshops
- Exhibition street races
- Off-road treasure trail ride for families and under 5s
- BMX displays
- Arts and crafts

The evening culminates in the mass participation Medway Big Ride, a 5km route on closed roads before a floodlit stunt BMX display and a firework finale.

To register for the Big Ride visit www.medway.gov.uk. Entry for the children's races, coaching and activities will be co-ordinated on the day.

All participants receive a free t-shirt and there are other giveaways available on the day too.

To enter the Evans Cycles sportives go to: www.evanscycles.com/pages/rideit-kent-medway-sportive-ride-17th-may-2015

To help residents prepare for the Medway Big Ride, Medway Sport is teaming up with Medway Public Health to bring a series of beginners cycle lessons. For more information on these, email active@medway.gov.uk

Low Flying Jets

Some of you may have noticed that there has been an increase in air traffic recently with additional flights going to Southend. The following link will take you straight to the page where you can register a complaint on the airports operations which they will investigate comments regarding noise at the airport should be made in the first instance to:

<http://www.southendairport.com/contact-us/comments/>

or via the High Halstow Parish Council website www.highhalstow.org.uk

If you would like to further contact London Southend Airport regarding noise please use the following contact details:

* By phone: Noise Complaints Hotline 01702 538599

* In writing: LSACL, Southend Airport, Southend on Sea, Essex SS2 6YF

Their aim is to respond in writing to all noise comments within 7 working days. However, in order for any comment to be logged as much information (date, time, location etc.) about the event must be given.

If you are quick enough with your smart phone or have fast enough broadband there are several sites which will tell you exactly which plane has just flown above your head and its altitude and speed.

High Halstow 2015 Photo Competition



After the huge success of last year, the HH Photo Competition returns for it's 6th year. Pictures can be emailed to photos@highhalstow.org.uk and can be from a camera, phone or any other device. The categories are the same as last year:

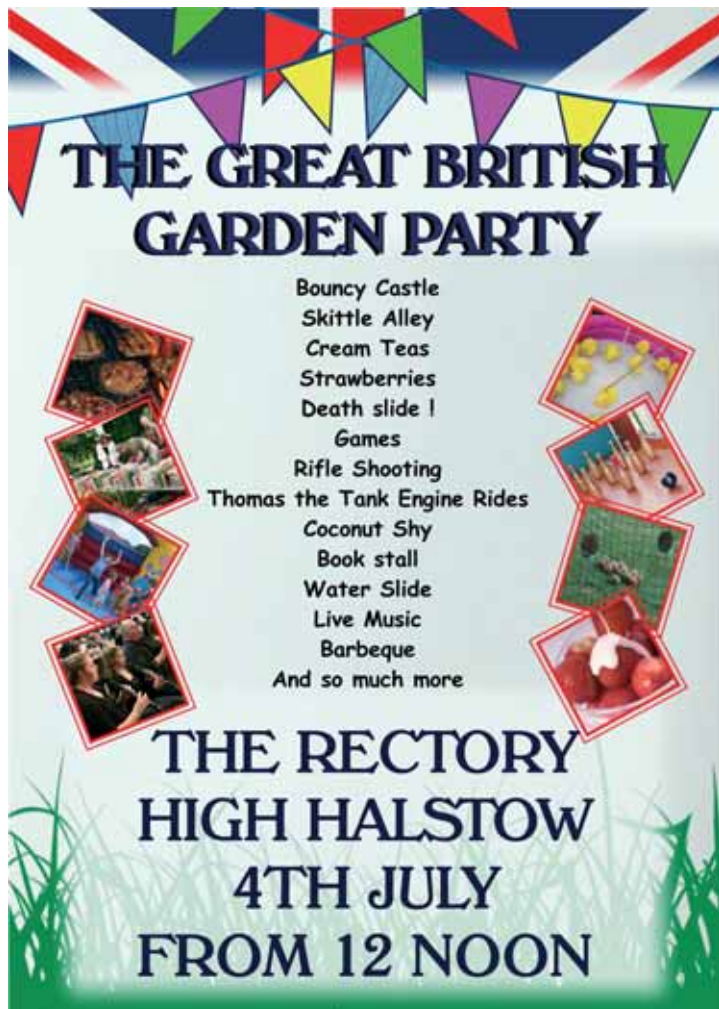
Under 16's - 1st, 2nd, 3rd

Flora & Fauna - 1st, 2nd, 3rd

People & Places - 1st, 2nd, 3rd

Overall Winner

Winners will receive a prize, certificate and their photo included in the HH Calendar.



High Halstow Relief in Need Charity

This charity exists to assist those in the Village who are in need, especially widows and widowers. The trustees wish to remind the people of the parish that they will give consideration to any request for a particular need, at any time during the year. If you, or an elderly relative would feel safer at home with a telephone 'Lifeline' the Charity could help with this. All requests are dealt with in complete confidence and there is no need to wait for the October form.

The trustees are:

- Rev. S. Gwilt - The Rectory
- Mrs L. Munday - 22 Willowbank Drive
- Mr S. Bailey - 27 Cooling Road
- Mrs J. Gillies - 22 Leaman Close
- Mr J. Myatt - Decoy Hill Road
- Mrs C. Peek - 2 Willowbank Drive
- Mrs J. Collins - 6 Marsh Crescent

High Halstow Stitchers in The Memorial Hall

1st, 2nd & 3rd Wednesdays in each month 12-2pm

*A chance to learn a new skill involving Stitches
of all types from friendly, like minded
ladies and to pass on any skills you may have.*

*Quilting - X Stitching - Patchwork - Knitting
Sewing in General etc.*

Come along and join us.



Readers Letters

Dear HHT,

My parents Sandra & Harry Stapley live in the village & Dad passed away Saturday night (28th) after a very long battle with cancer & other complaints. The family would like to say a big Thank you to all the lovely people that have sent cards. Thank You to all the neighbours & others that have helped us over the years with Dad.

Sandra Stapley & Family
Leaman Close

Dear HHT,

I sold my house in High Halstow in 2009 and moved firstly to Brompton and then Snodland. I was still able to support the various committees and organisations from these distances. I have now moved to Storrington in West Sussex and have now had to resign from both hall committees and as payroll clerk for the parish council. I will, however, continue to run the quiz nights with Lesley and John, and the theatre trips with John's help. I just wanted to record my thanks to the parish council for the gardening vouchers they presented to me (I have bought lots of lovely plants for my new garden), the Village Hall committee for the M & S gift card they presented to me (I did the "womanly" thing and bought clothes!) and to the trustees and committee members of the Memorial Hall for the gardening voucher and good luck card.

Aside from this I would like to thank the people of High Halstow for all the years of support and friendship throughout the good times and the tough times. Gary once asked me why I couldn't do what Pat did – leave and not keep coming back! He was joking, I hope!! Well Gary, the reason I keep coming back is that my heart will always be in High Halstow.

Margaret Church

Dear HHT,

I would like to thank the 'Times' for publishing my letters where I was able to highlight a problem with a mysterious fox feeder. I have since learned that this has been an issue for other neighbours lasting two years! We are fortunate to have a conduit in the 'Times' to inform of matters that trouble us and of course to give praise to Samaritans as in last month's edition"

Regards as always,

John Wilson
Christmas Lane

Dear H.H.T.

As a resident of this delightful village, I am writing to advise other households to be aware as an incident occurred which is not in-keeping of this respectable rural neighbourhood.

During the evening of Wednesday 15th April 2015, someone decided to come into my front garden to remove and break a number of Ornamental Solar Lights, none were stolen just removed and broken then dumped on the lawn.

I personally cannot see the benefit of doing this or the fun gained from it – so if it was you !, can you please contact me to explain why this act had to occur, or, at least cease doing it.

I sincerely hope this letter is printed to bring this matter to people's attention and hopefully someone's conscience in the endeavour that this stupid act is not repeated, so that High Halstow can continue to enjoy the existing ambience.

Syd Brunt.
Christmas Lane.

Come and Meet Your Parish Councillors

Chris(tine) Watson & Gary Jerreat, two of your Parish Councillors will be at Kings Kitchen in the Memorial Hall on: Tuesday 12th May from 10.30 – 12.00pm and every 2nd Tuesday in the month. Come and tell us your problems or find out about projects we are undertaking.

If we can't answer your questions there and then we will get back to you.

High Halstow Parish Council



Need to Hire a Hall

If you are interested in hiring either of the halls in the village for a party, function or meeting please contact:

Memorial Hall - Angela Forward 251756
Village Hall - Crystal Wakefield 251849

Please do not call on a Sunday.

Next edition June 2015; Contributions for June should be sent
by 24th May to:

Carl Mitchell, 8 Marsh Crescent, High Halstow ME3 8TJ
or e.mail to editor@highhalstow.org.uk