



# High Halstow TIMES



Home of the Heron

May 2017

## Heron Awards 2017

Every day sees acts of kindness, generosity, sacrifice and courage in our small community. From the friend who visits sick neighbours to the single parent struggling to raise young children alone. From the sick child who always has a smile to those who work sacrificially to ensure our community is a wonderful place to live in. The High Halstow Relief in Need Charity is once again sponsoring the Heron Awards. It has been 10 years since we ran our community award scheme so there are lots of people out there who deserve to be recognised and thanked for the difference they make to all of us. So often we don't realise what a difference a person makes till they are no longer here and it dawns on us what we have lost. Let's try our best to change that and say thank you while they are still here. Maybe what they do will inspire others to do the same. There will be a special award night on 28th June so book the date now and join with us as we celebrate the efforts of our friends and neighbours.

There are two main categories: "Junior" (under 16), and "Adult" (over 16). Each main category has 3 further divisions as listed below. There will also be an overall "Community Hero" chosen by the judges from the nominees. Applications must be completed in full, put into a sealed envelope marked "Heron Awards" and deposited in the Rectory letter box (2 Cooling Road High Halstow, ME3 8SA) no later than **10th June 2017**. Applications may be supported by a maximum of one A4 page of supporting information, but no photographs. The judges are nominated by The High Halstow Relief in Need Charity and the judges' decision will be final.

### Rules & conditions

You may nominate anyone who lives, works or attends school in the village or makes a significant contribution to the village

### Come and Meet Your Parish Councillors

Chris(tine) Watson and Gary Jerreat, two of your Parish Councillors, will be at Kings Kitchen in the Memorial Hall on: Tuesday 9th May 2017



from 10.30 – 12.00pm and every 2<sup>nd</sup> Tuesday in the month.

Come and tell us your problems or find out about projects we are undertaking.

If we can't answer your questions there and then we will get back to you.

A nominee may only be nominated for one category and in the event of a nominee receiving more than one nomination the judges will decide into which category he or she should be entered.

the more information you give us about the person and why they deserve an award the easier it will be for the judges to make a decision

The number of nominations will not affect the judges' decision **BUT** the quality of the supporting information will.

Illegible nominations will be discarded.

Nomination forms & supporting documents will not be returned.

The Judges may also present a special community award to anyone the feel has made a significant contribution our community.

<i>Junior</i>	Educational effort/ courage <input type="checkbox"/>	Community involvement <input type="checkbox"/>	Environmental care <input type="checkbox"/>
<i>Adult</i>	Caring neighbour / courage <input type="checkbox"/>	Community involvement <input type="checkbox"/>	Environmental care <input type="checkbox"/>
Name, address & tel. no. of Nominator .....			
.....			
Name & address of Nominee .....			
.....			
Reason for Nomination .....			
.....			
.....			
.....			

## High Halstow Primary School Spring Fair.

Saturday 20<sup>th</sup> May - 11am to 3pm

Come along and join in the fun at the Spring Fair.

There will be traditional games, BBQ, Cakes and much more. All money raised will go towards buying new equipment for the children at the school to develop and enhance their learning.



## ***High Halstow and District Gardening Club***

The club held its annual dinner on the 1st April at the Medway Yacht Club . The food and service were excellent, enhanced by the beautiful views across the river Medway.

On the 11th April Jean Griffen who broadcasts on radio Kent delighted the members with her stories from the potting shed.

On Tuesday 9th May the club will hold an auction. Garden related items and plants will be sold to the highest bidder. Please bring along any unwanted items or spare plants. Non members are welcome for a small fee of £1.50. Come and join us for a bargain at the Memorial Hall at 8 o'clock. More details about the club are available by email [hhdgc@outlook.com](mailto:hhdgc@outlook.com)

### ***Editor Required***

The High Halstow Times is looking for a new editor. After 10 years in the role Carl has decided that it is time to hang-up his editors pen/keyboard and hand the task on.

The role requires someone with their own computer and internet connection who can spare approximately 4-6 hours per month to edit and layout the content for printing.

If you would like more information please contact Carl on 250911 or email [editor@highhalstow.org.uk](mailto:editor@highhalstow.org.uk) A full handover will be given and as much help as is needed.

**HH Parish Council**

### ***Friendly Club***

Our next meeting is on Wednesday 24th May. We will be entertained by Leslie Allman who will be dressed in costume (quite frightening) and will tell us all about 'Life In The 7 Dials'. A notorious area of East London from years gone by. We meet at 2pm in the Memorial Hall, and if anyone would like to join us we would be happy to see you.

For more information about the club, please ring me on 250677.

Margaret Whitebread

### ***Bus Trip To Wintershall Estate***

Would you be interested in a mini-bus trip to see the all day production of 'The Life of Christ'?

On Saturday the 24th June from 10am-3:30pm. This is held on the Wintershall Estate near Guildford and covers his life from birth to resurrection. The play moves to various locations around the grounds. The ticket price is £20 for an adult, with concessions for seniors and families, plus the cost of the bus. (it goes ahead even it rains).

If you are interested please ring me on 250677, Margaret Whitebread.

## ***Isle of Wight Holiday***

Fancy a holiday to the Isle of Wight ? Coach from the village direct to Shanklin for a 6 night break staying at the Langham Court Hotel on a half board basis. Travel on Sunday 10th September returning on Saturday 16th, 3 full day excursions are included. The hotel has entertainment most evenings and also an indoor heated pool. This is being arranged by the 'Friendly Club' but you do not have to be a member to join us on this holiday. If interested and would like more info please ring me, Margaret Whitebread on 250677.

### ***Dog Walkers***

Our rights of way and green spaces are for us all to enjoy. Please be aware that if you are exercising your dog it should be under control at all times, and it is your responsibility to clear up it's mess afterwards. Dog fouling is an eyesore, a serious health hazard and an environmental crime. Please clean up after your 4-legged friend.

### ***High Halstow Relief in Need Charity***

The charity has existed in High Halstow for many years and is an amalgamation of smaller charities/private trusts, the oldest of which dates from 1716. It is to help the residents of the parish of High Halstow who are going through a time of need or hardship; this includes widows and widowers but also is there to help other people of all ages and from all walks of life. Requests can also be made by organisations or groups in the parish.

Requests for financial assistance can be made, at any time of the year, in writing or by email or in person to any one of the Trustees. A resident can apply on behalf of someone else in the village but their permission must be obtained first. All requests are dealt with in the strictest confidence. If you are not sure about a request and think it may be rejected, do not be afraid to speak to any of the trustees about it. Funds are there for people who need help.

The Trustees are:

Rev. Stephen Gwilt	–	The Rectory, 01634 250637
Mr Stuart Bailey	–	27 Cooling Road, 07976 760844
Mrs June Collins	–	6 Marsh Crescent, 01634 250105
Mrs Lesley Munday	–	22 Willowbank Drive, 01634 250276
Mr John Myatt	–	Decoy Hill Road
Mrs Chris Peek	–	2 Willowbank Drive, 01634 252604
Mrs Natasha Turner	–	12 Marsh Crescent

Office email address: [office.hhrin@gmail.com](mailto:office.hhrin@gmail.com)



## High Halstow Hikers

Sunday 9th April was the warmest day of the year so far and 11 walkers met at Ranscombe Farm reserve for the regular monthly walk. Although not the longest walk, just under 5 miles, Ranscombe Farm offers a variety of terrains, woodland, open grassed areas and farmland. The site is managed by the charity Plant Life and its aim is to encourage a habitat for rare and endangered flora and fauna. Early purple orchids were in flower along with bluebells and carpets of primroses. It was noticeable that Plant Life have undertaken much tree felling and coppicing to bring light into wooded areas to encourage the flowers. With the recent exceptionally dry weather the walk itself was very easy along well-defined pathways; within the reserve there are some 20 miles of managed paths. It was noticeable that the farmland areas are struggling from lack of rainfall with the oilseed rape fields very sparse and under-developed. On the morning we shared the reserve with a charity holding an 8 hour endurance event. Runners could choose distances from one lap of 4.7 miles to ultra marathons taking the full 8 hours. As a group we completed our 4.7 miles in just over 2 hours.

On Sunday May 14th we will walk from Cliffe Woods village taking paths through the woods and down to the area to the north including the hamlet of Spendiff and small village of Cooling Street. Last time we took this walk it proved to be the wettest in our over 5 year history so fingers crossed for better weather this time. The walk will start at 10.00 from the village car park (ME3 8HX) that is reached by taking Milton Avenue off the B2000 and then taking the first right into Parkside.

All are welcome. Any queries can be made to Mitchell on 01634 254428 or [mitch.dowsett@btopenworld.com](mailto:mitch.dowsett@btopenworld.com).

### Need to Hire a Hall

If you are interested in hiring either of the halls in the village for a party, function or meeting please contact:

Memorial Hall - Angela Forward 251756  
Village Hall - Crystal Wakefield 251849

**\*\* Please do not call on a Sunday \*\***

## Investment Club

The Gnome has retired "In early 1998 the financial world was comparatively stable and the Daily Telegraph in association with Proshare was encouraging readers to set up Investment Clubs. Several people were sufficiently interested to form a Club on the Peninsular. Proshare issued rules and regulations to follow in order for best practice. We met monthly in members homes over 200 times and were joined by people from Chatham and Rochester. In early days meetings were held over cups of tea, or coffee but then wine with snacks were also introduced and suddenly conducting business developed into a social gathering of friends. The progress of the Internet and communication by E-mail was invaluable for research, the complexities of the Markets involved a very steep learning curve. So why, with 18 years experience, navigating through difficult times, have we decided to stop trading ? The increasing tensions between nations and a lack of clarity leaving the European Union has bred uncertainty. We are merely exercising caution. The Garden Gnome ? our mascot, has retired to a good home, a constant reminder of so many joyful times with friends.

*The Secretary*

## Cornish Holiday Cottage Let

A fabulous 300 year old cottage, recently fully refurbished with open fire place, fully fitted kitchen, modern decor and off-road parking, benefitting from two well-furnished bedrooms (1 double and 1 twin).

The cottage is in the hamlet of Trewint, only a mile away from Altarnun, one of the most beautiful villages in Cornwall. The Rising Sun Inn just outside the village is

a 16th century award-winning traditional pub, selling locally produced ales and fresh and innovative meals in a great atmosphere. The cottage is ideally placed for discovering the coastline of Cornwall.

- Electric wall heaters with open fire
- Electric oven and hob, microwave, fridge, dishwasher, TV with Freeview, DVD, WiFi, selection of books, games and DVDs
- Fuel, power and starter pack for open fire (October-March) inc. in rent
- Further fuel for fire available to purchase locally
- Bed linen and towels inc. in rent
- Off road parking for 1 car
- Lawned garden with furniture opposite cottage across road
- One well-behaved dog welcome
- Sorry, no smoking
- Shop and pub 1 mile.

The cottage is advertised with Sykes Cottages (<http://www.sykescottages.co.uk/cottage/Cornwall-Fivelanes/Laburnum-Cottage-935455.html>)

Alternatively I live in the village and will be able to offer a discounted rate if you contact me directly on: Andy 01634 936095  
Mobile: 07958 604268



## *High Halstow Parish Council Chairmans Annual Report*

As always ladies and gentlemen it is right for me to thank Councillors for their concerted effort this year in running the Parish on your behalf.

You should know that the job of Parish Councillors is unpaid and voluntary and can involve a lot of time, effort and sometimes anxiety.. that said it is very rewarding sometimes.

Sadly we have lost Councillor Carl Mitchell this month. Carl has embarked on a new business venture and rightly needs to devote all his efforts to ensure that is successful.

This means there is an opportunity for you to get involved in the running of the Parish. Our clerk will shortly advertise the vacant post of Parish Councillor, so please take it under consideration.

We are also looking for a new editor for the High Halstow Times, again if this is a area in which you feel you can contribute please let us know.

Thank you Carl for all your efforts with the Council and with the High Halstow Times.

I say a special thank you to Cllr Chris Watson for her much valued support as Vice Chairman.

Spare a thought for the late Hazel Stockbridge a one time Parish Councillor and character of the village who passed away this last year. We have given permission for a tree to be planted in his memory.

I would also like thank our employees Roxana, Jack and John for their efforts this year in keeping the Council on track and clean.

But ! Ladies and gentlemen its not all about The Parish Council ... High Halstow is a nice place to live because of you, our clubs, our businesses and our school. So lets not forget to support each other as much as possible.

If you think you have the ability or inclination to volunteer, please get involved with one of our many clubs. Think about buying and drinking a little more within the village, try to think within the box or within the village when engaging some service or another.!!

Another thanks to the 30 National grid volunteers for their major effort this year with help around the village. Never has so much been done by so many..!!

So what did we achieve this last year.?

Some of us can now make a mobile phone call without leaning out of the bedroom window and waving the phone towards Basildon.

We should be thankful for the sacrifice of those people who live in close proximity to the new mast.

Although it's not as bad as I first thought being dark green and only 12 metres tall instead of the planned 15metres. Please be aware that the installation of this mast is probably not the last.. There will be another I'm sure.

We now have a new climbing frame installed in the play park replacing the last old piece of equipment I believe it is very popular among the with the younger children who use the park more and more.

We have partied into the night at the celebration of the Queens 90<sup>th</sup> Birthday, sadly she couldn't make it but I don't think anyone noticed.

A great day with lots of people and talk of lets do this every year.....

I remember it rained at one point in the day allowing Amelia Rose Hankins to make her High Halstow debut to a very enthusiastic and full house.

And what a sight and how strange to have so many scarecrows join us in the recreation ground. I've still got mine in the garden guarding the mower in the shed.

If there was ever a community activity that galvanized a community into action it was the scarecrow festival in the two weeks prior to the Queens birthday party.

Once one or two appeared they seemed to miraculously populate the whole of the village fueled in no small way by the various pictures and comment on Face book. This has got to be an annual event. !!

The village hall has finally been finished. The last major job (phase 5.5) was to have the floor sanded and re sealed and the mobile bar installed.

May I formally thank both Gary Thomas and Ray Collins for there sustained effort in bringing a "The 2000 village appraisal" item to fruition keenly supported by the Hall committee, this Council, funders and you the community at large.

Our path across the recreation ground from the Street to Ruggles Close has now had a layer of tarmac added making it easier to navigate and you may have noticed that the overhead power lines above the Village Hall bus stop have been made ready to install one of the two new timber bus stops. Thanks to Cllr Brian Williams

This year you will be pleased to know that the Parish Council will meet in August and December, as well as all the other months in the year if you count April's Parish Meeting.

Medway Council has decided it is time to close our popular toilet block in the village car park.

I'm not sure where they expect the postman, paper boys and girls, delivery drivers, village contractors, dustmen, utilities workers, cyclists, ramblers, children, mums and dads, footballers, and occasional users to go when they are taken short.

You may guess that we are against the closure!

I wonder if we should take the initiative here, especially in the knowledge that the Police station at Kingsnorth is to close for lack of funding,

Should we convert the toilet block into an office to house the Peninsula Police force (now reduced to two PSCo's) along with a reduced size public WC.

It may solve a lot of problems and I would say we have a good chance of qualifying for funding..!

Please let the Parish Council what you think should happen?

I cannot finish without comment about the ongoing progress towards the Medway Plan set for adoption and implementation in 2019 I believe.

Firstly thank you to all of you who have written into the Medway Council with your views and thanks to all of you who attended at the public meeting last month, Your contributions formed the basis of the Parish Council response.

We all understand, as a nation the need to build new housing. However building more housing in Medway than we actually need, will only exacerbate our plight on services. Decent services are fundamental to healthy living.

We on the Hoo Peninsula live in one of the most unique wildlife areas in the South East. Lodge Hill at the western end of the Peninsula hosts the only and largest SSSI for nightingales and is the focus of a major RSPB protest and fight to stop development by Medway Council who would potentially build 5000 houses there along with hotels and business premises.. <https://www.rspb.org.uk/get-involved/campaigning/lodge-hill/>

The Hoo Peninsula along with the North Norfolk Coast lays directly South of the Arctic circle and is slap bang in the middle of one of only five northern migratory routes in the world.

This runs from the Arctic down the north sea through the English Channel and Bay of Biscay across the Straights of Gibraltar to Africa. It is used biannually by millions of migratory birds,

The Peninsula and Estuary host more than 10% of the Nation's Special Protection Areas (SPA). We are as we speak about to open a newly built "Special Protection Area" in High Halstow adjacent to Egypt Bay. This has been built in mitigation for an SPA lost on the Essex side of the Estuary during the building of the new Port.

People generally and certainly a significant proportion of Medway residents, associate The **Thames** with London and not Medway. They and Medway Council have not yet come to appreciate that a very significant part of the **Thames Estuary** lay within Medway's boundary and they, as such, are custodians of this most valuable national asset.

The Hoo Peninsula is the jewel in the crown of the South East being rich in Historic and Natural heritage it is the subject of and will be the focus of funding for the celebration of that Heritage in the coming 3 years we have today submitted "Heritage Projects" for major funding. Lets embrace that celebration and put the Hoo Peninsula firmly on the map as the best place in the South East to visit see wildlife and sample cultural heritage.

**George Crozer**  
**HH Parish Council**

**Church Missionary Society visit**  
We are delighted to invite you to meet  
Dick and Caroline Seed from CMS  
Sunday 28<sup>th</sup> May 930am  
In St Magarets Church

## **Cllr Phil Filmer**

### **Report for High Halstow Parish Council's Annual Parish Meeting held on Wednesday 12 April 2017**

#### **Kerbside collections, customer satisfaction & contract monitoring**

- Over 17 million kerbside refuse, recycling and organic collections last year (333,000 collections weekly)
- 91% satisfaction with refuse collection & 85% satisfaction with recycling facilities
- 10760 inspections carried out (street cleansing and litter bins; refuse, recycling and organic collections)
- Street cleansing – operated 364 days a year
- Three Parishes have opted to undertake their own street cleansing – Cuxton and Halling, All Hallows and High Halstow
- Veolia cleansed 566 miles of streets last year (over 3000 streets) and sweep 12 miles of shopping areas continuously
- Over 2,000 litter and dog bins emptied on average 3 times/week
- Household Waste Recycling Centre's - operating 363 days a year
- Almost half a million visitors to the 3 HRWC networks (est. 498,000 visitors)
- Cuxton HWRC improvements: to address A228 congestion works to expand the access road and provide additional parking were completed in March

#### **Recycling performance**

- Recycling rate for 2016 -17 is an improvement on 2015-16
- Only 11% of waste collected was landfilled
- 16,400 rolls of caddy liners sold at libraries and community hubs (estimated to divert around 640 tones of food waste)

#### **Flats recycling**

- Delivered 8,000 recycling leaflets increasing recycling in flats on average 20%
- Installed bulk recycling bins to 1,000 flats
- Standardised clear sack deliveries for 12,000 flats that recycle at kerbside (leaflet delivery later this year)

#### **Graffiti removal and street washing**

- 214 graffiti incidents removed and intelligence shared with the Community Safety Partnership (gang tagging)
- Attended 39 street washing incidents, some of which are to assist the police where there has been serious injury or fatality

#### **Highway Maintenance**

- Resurfaced 3940 linear metres of footway and completed 13 smaller sites of footway patching
- 24,892 gullies were cleaned across all 22 wards
- Completed 33 drainage schemes
- This winter we had 61 primary salting runs and 20 secondary salting runs
- Over 2016/17 financial year, an average of 99.34% of street lights were in illumination at any one time
- 189 enquiries answered from members of the public, in relation to our Public Right of Way (PROW) network
- Our PROW volunteers worked 2 days per week in the summer months and 1 day per week in the winter months, maintaining our rights of way
- Researching a programme to convert street lights to LED which is more efficient and requires less maintenance
- Granted £191k from the Department for Transport for the Asset Management Self-Assessment and £201k from the pothole fund.



## **Integrated Transport**

- Bus patronage for Medway, supported by a number of bus improvement schemes, increased in 2016/17 by approximately 185,000 journeys
- Medway now has a Streetworks Permit Scheme which reduces the number of days of highway occupation by roadworks across the year. It also makes utility companies pay up front for the road space they need.
- Over £1.5 million of Local Transport Plan funding spent on a range of public accessibility, bus stop facility, road safety, cycling, and traffic management improvement schemes
- Local Growth Fund £24 million programme of improvements have progressed in 2016-17:
  - Strood Town Centre – successful public consultation carried out to agree a package of improvements including changes to the car park / market area, road network changes to help with traffic flow, an improved railway station, changes to Rochester Bridge and improvements to the street scene e.g. removing street clutter, making the passage easier for pedestrians etc. An investment of £9million into Strood Town Centre
  - A289 Wainscott Bypass – changes proposed to improve traffic flow by increasing size of roundabouts, adding slip lanes, adding pedestrian footbridges. This scheme is progressing well and will see an investment of £11million
  - A new signal scheme was implemented on the westbound entrance to Medway Tunnel, reducing journey times for workers leaving Medway City Estate during the evening peak. Safety was improved in the tunnel by adding speed cameras
  - Cycle Safety – a Cycling Action Plan was agreed which has seen a number of cycle paths and other improvements being implemented across Medway
- A range of road safety and sustainable travel initiatives were delivered across the year, including Walking Bus (school journey) scheme and the WOW Walk on Wednesday initiative. This achieved a reduction in car journeys in Medway across the year of 48,166.

### **Cllr Phil Filmer**

Address: Bridgewater House Parbrook Road, High Halstow Rochester ME3 8QG

Tel: 01634 254196

Email: phil.filmer@medway.gov.uk



### ***High Halstow Village Hall***

#### **Quiz 19<sup>th</sup> May**

To book a table, please ring Margaret on 01903 340953 or 07702 196179 Entry £3.00 per person Door from 7.30. Please come along and support this event in aid of the Village Hall.

#### **Annual General Meeting May 10<sup>th</sup> 6.30 pm**

With the AGM on 10th May the Committee will be approaching the regular users of the Hall to come along and provide additional support to the Committee. It would be appreciated if the work in keeping the hall going is shared with the various groups so not only the improvements can take place but to share the running of the Hall. This is your chance to hear what has happened and ask questions over the past year

### ***Friends of St Margaret's***

#### **Annual General Meeting**

**May 22<sup>nd</sup> 7.30pm in the Church**

All of the village are invited to hear what has happened over the past year with the opportunity for members of the Friend to elect the new committee for the coming year.

#### **St Margarets Church**

Join us for tea/coffee and yummy cake

Saturday 20<sup>th</sup> May 2-4pm

Donations in support of Christian Aid

**All Welcome**

## *Annual report for Youth Club April 2017*

The Youth Club has had another good year and has managed to keep going despite having problems with not always having enough adult helpers.

The Club is coming up to its 24<sup>th</sup> Birthday. We haven't yet started planning a Birthday Party but I hope that there will be one. The Club meets on Tuesdays in term time only from 7pm till 8.45pm in the Village Hall.

The membership numbers remain fairly steady at around 35 and we have approximately another 20 names at the moment on the Waiting List. Some of the children on the Waiting List are still only eight so they need to wait until their ninth birthday and for there to be a membership place for them before they are invited to join. See contact details below for adding names to the Waiting List.

During the past year the members have enjoyed the usual weekly fun and games e.g. football, cricket, table tennis, karaoke, computer games, snooker and pool, as well as sweets and biscuits from the tuck shop and a ready supply of water and soft drinks for cooling them down after all the running around they do. We have also had special events and themed evenings such as our Birthday party, the Christmas Disco, an Easter activity which includes an Easter egg hunt as well as sports evenings with team games and prizes and our summer end of term barbecue. Youth Club sessions are noisy and often quite hectic, but as long as everyone is sensible it is good to see the youngsters having fun and socialising in a happy and safe environment. The Club has a strict set of Rules which each child and parent is asked to sign up to as part of the membership procedure. This is what helps us to deal with any unacceptable behaviour at the Club and ensure that the few don't spoil it for the many.

After the final phase of the Village Hall refurbishment we are enjoying the new facilities. Our storage area has been improved and we make use of every available part of the downstairs of the building. All of the areas are supervised; if there are fewer adult helpers one week then areas of the club remain closed. We have yet to use the new upstairs room, but I see that as something that we might benefit from in the future when we have more adults to supervise.

If you feel that you could help your village youth club by volunteering to join the adults' rota then please get in touch and we will invite you for an initial visit and a chat. The club can benefit from all sorts of people with all sorts of skills, all ages and all shapes and sizes. You may not know the first thing about the rules of football but you might be able to help serve in the tuck shop. You wouldn't be expected to become the Club Chairman or the Treasurer but you might be happy to chat to children in the corridor and make sure there isn't any running into or out of the toilets. These are just a couple of examples. Please get in touch to discuss other skills you could bring along and share.

Many thanks,

Mrs Chris Peek

Contact details:

Chris Peek 01634 252604 (email [chris.peek@lineone.net](mailto:chris.peek@lineone.net)) Membership Secretary

Cat Archer 07519 941153 (email [carcher1391@gmail.com](mailto:carcher1391@gmail.com)) Club Secretary

### *HH Village Website*

Please visit the Parish Council website for everything about our village. You can see the minutes of your Parish Council or look up local groups in the village, past copies of the High Halstow Times, and pictures of recent events. Please note that there is now an RSS feed on the Parish Website where you can get automatic updates when the site is updated. Please visit [www.highhalstow.org.uk](http://www.highhalstow.org.uk) and follow the instructions on the right hand side.

### *Considerate Parking*

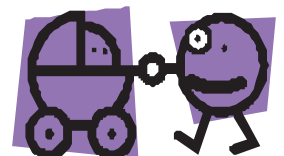
Mums with babies and older people are finding it more and more difficult to walk around the village due to cars parked on the pavement. They are having to walk into the road because of this, which is dangerous and unnecessary.

Consideration should also be given to access for Emergency vehicles, such as fire engines etc.

Please think about this before you park your car/van and try to be a little more considerate.

Thank you

High Halstow Parish Council





## Dates for Diary

### Every Tuesday:

King's Kitchen  
10:00 Memorial Hall  
Bell Ringers  
19:30 St Margaret's Church

### Every Thursday:

Sugar Babes  
19:00 Memorial Hall

### Every Saturday:

Karmann Dancers  
09:00 Memorial Hall  
KLUK Martial Arts  
09:30 Village Hall

### Every Sunday:

Déjà Vu Spiritual Centre  
18:30 Village Hall

### Every other Monday:

Community Choir  
20:00 St Margaret's Church

### Every 3rd Wednesday:

Whist Club  
14:00 Memorial Hall

### Every 4th Wednesday:

Friendly Club  
14:00 Memorial Hall

### Other Dates:

Wednesday 5th: Women's Institute  
19:30 Memorial Hall  
Tuesday 11th: Gardening Club  
20:00 Memorial Hall  
Wednesday 12th: Parish Council  
20:00 Memorial Hall  
Sunday 15th: Family Service  
09:30 St. Margaret's Church  
Wednesday 19th: Whist Club  
14:00 Memorial Hall  
Friday 28th: Quiz Night  
20:00 Memorial Hall

Local groups, please let us know the dates of your meetings/events for the coming year so we can include them in the HHT and on the website.

## The Village Shop

### Opening Hours

Monday – Saturday 7am – 8pm  
Sunday 8am – 5pm  
Telephone number: 01634 254561

## Kings Kitchen



A Coffee and Cake Café  
for the Whole Village.  
Open 10.00am - 1.00pm  
every Tuesday  
in the Memorial Hall.  
Why not come in and enjoy a  
cuppa and a chat.  
A warm welcome awaits you.

## Speed Limits

Please can I remind people to observe the speed limits through the Village. We should all be mindful that High Halstow



is a nice place to live where children, older residents and walkers should feel safe. Some may not be as aware of the traffic as they might otherwise be. Please be careful.

**George Crozer, HH Parish Council**



Based in High  
Halstow  
Contact Jade  
07708 394979



Permanent Makeup is an advanced technique used to apply coloured hypoallergenic pigments into the dermal layer of the skin. The pigments are made from natural minerals making enhancements look very natural that can last for years but will fade over time.

### Treatment areas:

**Brows:** Eyebrows frame the face, with the right shape & colour brows it can make you look years younger

**Eyes:** It can be difficult to apply eyeliner correctly & make it last all day. Define your eyes with eyeliner or lash enhancement.

**Lips:** Define & enhance your lips with a gorgeous lip liner, blush or full lip colour.

Book a free consultation to see how Permanent Makeup can help you.

[www.serenitypermanentmakeup.co.uk](http://www.serenitypermanentmakeup.co.uk)

# Who is your



High Halstow Hero

Have you nominated your local hero for a Heron award yet?



Tell everyone, we want to recognise all those amazing people who make High Halstow such a great place to live.

Nomination form in the High Halstow Times

Or Contact Rev Stephen Gwilt on 01634 250637 or [stephengwilt2@hotmail.co.uk](mailto:stephengwilt2@hotmail.co.uk)

Learn

## GUITAR

Professional guitarist and guitar teacher offers 1 to 1 tuition. All ages and abilities welcome. Graduate of London Guitar Institute and playing experience includes The Who and Robbie Williams. Can inc practical, grades & theory.

CHRISTMAS VOUCHERS AND DEALS AVAILABLE HOME VISITS OR AT HOME STUDIO IN CHRISTMAS LANE

Call Matthew 07967 125091



VT

NESS

- GUITAR LESSONS 07967 125091
- GUITAR LESSONS 07967 125091
- GUITAR LESSONS 07967 125091
- GUITAR LESSONS 07967 125091
- GUITAR LESSONS 07967 125091
- GUITAR LESSONS 07967 125091
- GUITAR LESSONS 07967 125091
- GUITAR LESSONS 07967 125091
- GUITAR LESSONS 07967 125091
- GUITAR LESSONS 07967 125091

# christian aid week

14-20 MAY

'The last days and weeks in Afghanistan were the hardest... I didn't know if my family was going to be safe, alive.'



### No-one wants to be refugee

"It's better to die in a refugee camp than to die in a war. To risk your children's lives in a plastic dinghy and to leave everything you know behind." When the alternative is terror, bombs, bullets, floods or famine almost anything is better.

This is the terrible choice facing tens of millions of people worldwide, fleeing conflict and disaster.

Christian Aid has been there for refugees since 1945.

Christian Aid is there NOW for ALL people to help relieve suffering and build a world where EVERYONE has a safe place to call home.

"AT CHRISTIAN AID WE BELIEVE IN LIFE BEFORE DEATH"

Volunteers will be collecting during Christian Aid Week. Thank you for your support.





Table Top & Craft Fayre  
at Cross Park Allhallows  
on Sun 26th March  
10am Till 2pm Stalls are

Pat's Collectables  
Tombola, Mystic Items  
Jewellery all Silver  
Knitting Items  
Lucky Dip  
Money Box's Hand Made  
Cards Aloe Vera  
Teddy Bears Handbags ect

Sunday 21st May  
Sunday 25th June  
Sunday 30th July  
Sunday 27th August

Tea & Coffee Available!

A Raffle for Charity  
If you would like a table  
please contact Pat 01634-251077



## Murder Mystery Evening



### The Pink Heron Club

You are invited to join us in the Caribbean for a 70's Hen and Stag night with a mysterious end...

Friday 16th and Saturday 17th June  
High Halstow Recreation Hall

Doors open at 6:30pm

Seats by 7pm for 7:30pm Show

Tickets £10 to include 3-course meal

Licensed bar available

Tickets available from Wenda on 253169

### "Seated Exercises"

Thursday Morning 11:30am - 12:15pm  
£4 per session

This class is all about upper and lower body movement. If you have a problem with balance, are an older adult or are in rehabilitation then this is the class for you. All the exercises are completed using a chair in a relaxed and fun atmosphere. Equipment such as light weights, resistance bands and foam balls are used to move to music.

Come and join us...No Lycra Necessary!!!

Phone Wendy (255366) or  
Ann (251914) for more info.



## High Halstow Pre-school

Modular Building, Primary School, Harrison Drive,  
High Halstow, Rochester, Kent. ME3 8TF  
01634 255088

Proprietor/Manager Mrs Anita Russell BA (Hons), EYPS

- ✓ 'Outstanding Provider' Ofsted
- ✓ 2009-10 Extensive Outdoor Facilities
- ✓ Excellent Links with Primary School
- ✓ Friendly, Qualified Staff
- ✓ Affordable Childcare

Open Weekdays, term time only  
8.45 am - 3.30pm

Morning, lunch, afternoon and all day sessions available.

Children are funded for 5 free sessions the term following their third birthday.

Don't take Ofsted's word that we are an outstanding provider, come and see for yourself.

Ring 01634 255088



## Readers Letters

### May Parish Council Meeting

Please note the next Parish Council Meeting has been put back a week to the 3rd Wednesday of May. The meeting will be on the 17th May at 8pm.

**Dear HHT,**

I would like to thank the lady who helped me last Wednesday morning. I had a fall on the pavement and she kindly helped me up, she took me in her car, dropped me off home and made me a cup of tea, she also said she was going to run me up the hospital if I wanted to go. I know she was on her way to work, she said her name was Sheila and lived in Goodwood Close. I hope I didn't make her late but I never got a chance to thank her. Its nice to know that there are still some lovely and kind people out there.

So thank you so much Sheila, I wish you well.  
Mrs E Collins

Dear HHT,

Please would everyone regularly check their sheds and garages for any animals that may have got in unseen. This is following the disappearance of my cat for the last 9 days (who is still missing) and other peoples pets that have got shut in places. This is particularly important as the weather starts to warm up and could save a life.

Thank you for considering this.

Kind Regards,

Sheila Hayward



### Barking Dogs

A barking dog can be a real irritation at anytime of the day in unchecked. Please be mindful that your dog isn't causing others sleepless nights, early wake-ups or disturbed enjoyment of their garden.

If you leave your dog out during the day when you are out, it might be worth checking with a neighbour that they are not howling for your return.

Please be considerate to those around you and how often your dog is barking.

With the summer months approaching, we all want to be able to enjoy the warmer weather and leave our doors/windows open without being disturbed by barking.

### 2017 HH Photographic Competition



Villagers are invited to submit their pictures taken in the village for the 2017 Photographic Competition. This is our 9th year and we have had some amazing pictures submitted over the years.

Please send your entries to [photos@highhalstow.org.uk](mailto:photos@highhalstow.org.uk).

The categories are: Under 16's, Flora & Fauna, People & Places, Overall Winner.

Winners will receive a prize, a certificate and their photo included in the HH Calendar.

The closing date for entries is 29th October 2017.

### Your Parish Councillors

George Crozer, Chair 01634 250286

e.mail: [george@highhalstow.org.uk](mailto:george@highhalstow.org.uk)

Christine Watson, Vice Chair 01634 256529

Martin Andrews 07984 791029

Linda Atkinson 07825 619353

Ray Collins 01634 250105

Gary Jerreat 01634 253999

Bill Khatkar 07775 668620

Brian Williams 07908 006448

e.mail: [bdwilliams9@hotmail.com](mailto:bdwilliams9@hotmail.com)

Your councillors may also be contacted through the Parish Clerk:

Mrs Roxana Brammer 01474 871269

[clerk@highhalstow.org.uk](mailto:clerk@highhalstow.org.uk)

Next edition June 2017; Contributions for June should be sent by 24th May to:

Carl Mitchell, 8 Marsh Crescent, High Halstow ME3 8TJ  
or e.mail to [editor@highhalstow.org.uk](mailto:editor@highhalstow.org.uk)