



# High Halstow TIMES

Home of the Heron



June 2017

## Who is your



Have you nominated your  
local hero for a  
Heron award yet ?



Tell everyone, we want  
to recognise all those  
amazing people who make  
High Halstow such a  
great place to live.

Nomination form in the  
High Halstow Times

Or Contact Rev Stephen Gwilt on 01634 250637  
or [stephengwilt2@hotmail.co.uk](mailto:stephengwilt2@hotmail.co.uk)

### *Come and Meet Your Parish Councillors*

Chris(tine) Watson and Gary Jerreat, two of your Parish Councillors, will be at Kings Kitchen in the Memorial Hall on: Tuesday 13th June 2017 from 10.30 – 12.00pm and every 2<sup>nd</sup> Tuesday in the month.

Come and tell us your problems or find out about projects we are undertaking. If we can't answer your questions there and then we will get back to you.



### *Scarecrows on Parade*

Following the success of last year's Scarecrow Parade we are repeating the event again this year. The format this time will be to start erecting your scarecrows in your front gardens from 17 June. On 1 July they can all be taken to the "The Church Garden Party" at the Rectory for display. The two following weeks they can be viewed arranged around the Churchyard after which we request they are collected. Let us try and beat last year's total of 75 scarecrows.



### *The Friends of St Margaret's*

#### *High Halstow Village Hall*

Quiz 19<sup>th</sup> May

Just under £300 from the Quiz in May. The hall was packed and a good night had by all. Thanks to Margaret, Lesley and John for running this event and thanks to all who came to support it. The next quiz in the Village Hall is on July 14th.

#### Tables and Chairs

With the building works completed we are now embarking on improving the tables and chairs in the hall, we have taken delivery of 133 new chairs which will be available for use for events held in the hall, a further 17 will arrive next month. We will be keeping the plastic chairs for other types of events. In addition we have also purchased ten small tables to replace the wooden tables we use which have seen better days. Later this year we will be looking to purchase more new tables so please watch this space.





## Barking Dogs

A barking dog can be a real irritation at anytime of the day in unchecked. Please be mindful that your dog isn't causing others sleepless nights, early wake-ups or disturbed enjoyment of their garden.

If you leave your dog out during the day when you are out, it might be worth checking with a neighbour that they are not howling for your return.

Please be considerate to those around you and how often your dog is barking.

With the summer months approaching, we all want to be able to enjoy the warmer weather and leave our doors/windows open without being disturbed by barking.

## Editor Required

The High Halstow Times is looking for a new editor. After 10 years in the role Carl has decided that it is time to hang-up his editors pen/keyboard and hand the task on.

The role requires someone with their own computer and internet connection who can spare approximately 4-6 hours per month to edit and layout the content for printing.

If you would like more information please contact Carl on 250911 or email [editor@highhalstow.org.uk](mailto:editor@highhalstow.org.uk). A full handover will be given and as much help as is needed.

**HH Parish Council**

## 2017 HH Photographic Competition



Villagers are invited to submit their pictures taken in the village for the 2017 Photographic Competition. This is our 9th year and we have had some amazing pictures submitted over the years.

Please send your entries to [photos@highhalstow.org.uk](mailto:photos@highhalstow.org.uk).

The categories are: Under 16's, Flora & Fauna, People & Places, Overall Winner.

Winners will receive a prize, a certificate and their photo included in the HH Calendar.

The closing date for entries is 29th October 2017.

## Resume Of The Parish Council Meeting Held On 10 May 2017

The meeting held on 10<sup>th</sup> May was the meeting where the Chairman and Vice-chairman are elected for the year and various other representatives are appointed. George Crozer and Chris Watson were re-elected Chairman and Vice-chairman respectively. The meeting was attended by 8 parish councillors; Cllr Roy Freshwater of Medway Council and 2 members of the public.

It was reported that Carl Mitchell had resigned from the Council, due to pressures of business. He is to be thanked most sincerely for his contribution over the years to the Council. There is now a vacancy which will be filled by co-option. Written applications (letter or email) should be made to the Clerk by 30<sup>th</sup> June, with a view to the vacancy being filled at the meeting to be held on 12<sup>th</sup> July.

Cllr Freshwater said he was worried about the number of houses in the local plan and its effect on the Peninsula. His annual report will be published in High Halstow Times.

The 2 new wooden bus shelters have now been installed.

There have been problems with litter caused by animals tearing open the rubbish sacks overnight. If at all possible, could you please put your rubbish out on Friday morning instead of Thursday evening?

The replacement basket swing seat is at last on order. Unfortunately the original order by email went into their junk mail box but it has now been found and is being processed.

There have been complaints about traffic ignoring the pedestrian crossing near the school and speeding in the village. Please respect the speed limits and crossing, all of which are there for a reason.

This autumn will see the planting of trees at the end of the Recreation Ground to commemorate those who lost their lives in the First World War. Children at the school will be writing poems. The best 3 will go on a plaque and the rest will be printed in High Halstow Times.

Martin Andrews reported that there is still much off road motor bike nuisance and people from outside the area are coming in vans with their motorbikes to ride on land on the Peninsula. The police are trying to do something about this but their resources are diminishing.

The next meeting will be held on Wednesday 14<sup>th</sup> June in the Blue Room, Recreation Hall at 8 pm. We look forward to seeing you there.



## High Halstow And District Gardening Club

The club held its auction on the 9th May the event was well attended and most of our items went swiftly under the hammer thanks to Peter Tyler who for one evening only became the clubs auctioneer. Tea, coffee and biscuits followed by a raffle which concluded an evening of banter and bargains.

Our next meeting will be on Tuesday 13th June at the Memorial Hall in High Halstow. Jude Lawton will be at the club to talk about the work of the plant heritage and national collections in Kent . This will be followed by our raffle,tea and coffee.

The committee are trying to establish when the club was founded. Some say it was in the late fifties and others believe it started in the early sixties . We know it was one of the first clubs started in the village along with the WI . Any information would be appreciated please contact Mike Hughes tel 01634 252030 or by email [myqueues@icloud.com](mailto:myqueues@icloud.com)

Non members are always welcome for a small fee of £1.50 or why not join for the year . An annual membership is only £5.00

For further information contact the club by email [hhdgc@outlook.com](mailto:hhdgc@outlook.com)

Happy gardening

Many thanks. Mike Hughes

### ***Need to Hire a Hall***

If you are interested in hiring either of the halls in the village for a party, function or meeting please contact:

Memorial Hall - Angela Forward 251756  
Village Hall - Martin Mitchell 07752 682437

**\*\* Please do not call on a Sunday \*\***

### ***"Seated Exercises"***

***Thursday Morning 11:00am - 11:45am  
£4 per session***

This class is all about upper and lower body movement. If you have a problem with balance, are an older adult or are in rehabilitation then this is the class for you. All the exercises are completed using a chair in a relaxed and fun atmosphere. Equipment such as light weights, resistance bands and foam balls are used to move to music.

**Come and join us...No Lycra Necessary!!!**

**Phone Wendy (255366) or  
Ann (251914) for more info.**

**Great British  
Garden Party**

Bouncy Castle  
Skittle Alley  
Cream Teas  
Strawberries  
Death Slide !  
Pocket Money Games  
Rifle Shooting  
Photo booth  
Coconut Shy  
Book Stall  
Water Slide  
Live Music  
Barbeque  
Games

**Come and join the Party**  
**THE RECTORY HIGH HALSTOW**  
**1st JULY FROM 12 NOON**  
For more information contact Rev Stephen Gwilt  
on 01634 250637 or [stephengwilt2@hotmail.co.uk](mailto:stephengwilt2@hotmail.co.uk)



***High Halstow Village Hall are Proud to Present the first  
High Halstow Garage Safari and Boot Fair on Saturday 15<sup>th</sup> July 9:30-11:30***

**What is it?**

We are hoping to inspire as many neighbours as possible in High Halstow to hold a garage sale on the same day. For anyone with too much stuff, this is an opportunity to de-clutter and make some cash outside your very own front door. For some there's none of the bother of a car boot sale: no need to get up early to get a good spot, no need to pack everything into your car and no sitting for hours in a traffic jam. For others, it's a chance to explore the community and pick up a few bargains.

**How will people know where the bargains are?**

Register by Saturday 8<sup>th</sup> July and a map will be produced which can be picked up from the Village Hall on Saturday 15<sup>th</sup> July from 9:15 for 50p

**Who can register?**

Whether you wish the buyers to come to you or wish a traditional stall in the Hall please complete the form and bring to the shop along with your £5.00. Remember the houses visited will be for High Halstow only.

If you let us know if there are specific items for sale then we can advertise to encourage more visitors to your stall.

<b>Name:</b>	<b>Tel No.</b>	<b>Email:</b>
Address (Please state the address if the sale is to be at your house):		
Or state 'Village Hall' if stall required in the hall:		
If you have specific items you wish to advertise let us know and we will advertise them for you i.e. fitness equipment, books, furniture, cakes etc		

**How much will it cost?**

The price of registering or having a stall in the hall will be £5.00, which will be for the Village Hall.

**Will refreshments be available?**

Yes, as always the High Halstow Village Hall will have its café open to chat to fellow buyers.

**I don't have a garage; can I hold a sale on my lawn?**

Yes, but remember, sales are only permitted within the boundaries of your own property.

**What if it rains?**

The event will go ahead whatever the weather. If you don't have a garage and intend to use your garden, it would be a good idea to set up an awning or gazebo.

**How will I know where the stalls are on the day?**

We will be producing a map available from the Village Hall on the day for 50p so to ensure your address is advertised please ensure form is in the shop by Saturday 8<sup>th</sup> July.

**Any questions?**

If you have any questions please email [gary@highhalstow.org.uk](mailto:gary@highhalstow.org.uk)





The Friends of St Margaret's  
are pleased to present

**The Cuxton Music Group &  
High Halstow Community Choir**

**Summer Concert**

Wednesday 19<sup>th</sup> July  
8:00pm at St Margaret's Church  
High Halstow

*Tickets £6.00*

Refreshments will be available on the night

Tickets available from the Village Shop



## High Halstow Hikers

Nearly 20 of us enjoyed an excellent varied walk at the start of May, enjoying the warm spring sunshine after the recent rain had freshened and greened the countryside. We walked from the village car park at Cliffe Woods to the west of the village out past what was previously the Merryboys pub. We had intended to walk through the woods themselves but thought better of this after experiencing on the previous weekend not just tracking motor bikes but also a car racing along the woodland paths; such a shame that a few can wreck the enjoyment and safety of the many. Instead we took a route along the edge of the woods to 300 year-old Cooling Court with the raised ground on the way giving lovely views across the fields and marshes to the river in the distance. Having rested for a few minutes outside Cooling Castle we took a few less frequented paths to the hamlet at Gatton's Farm and then to Cooling Street and Perry Hill Farm. On the way we came across a field with innumerable varieties of sheep including one mother and two lambs with the confidence to come over and sniff the dogs! This was a lovely 5-mile walk across a piece of countryside on our doorsteps whose attractiveness we tend to forget because of its closeness to us.



## Cornish Holiday Cottage Let

A fabulous 300 year old cottage, recently fully refurbished with open fire place, fully fitted kitchen, modern decor and off-road parking, benefitting from two well-furnished bedrooms (1 double and 1 twin).

The cottage is in the hamlet of Trewint, only a mile away from Altarnun, one of the most beautiful villages in Cornwall. The Rising Sun Inn just outside the village is a 16th century award-winning traditional pub, selling locally produced ales and fresh and innovative meals in a great atmosphere. The cottage is ideally placed for discovering the coastline of Cornwall.



- Electric wall heaters with open fire
- Electric oven and hob, microwave, fridge, dishwasher, TV with Freeview, DVD, WiFi, selection of books, games and DVDs
- Fuel, power and starter pack for open fire (October-March) inc. in rent
- Further fuel for fire available to purchase locally
- Bed linen and towels inc. in rent
- Off road parking for 1 car
- Lawned garden with furniture opposite cottage across road
- One well-behaved dog welcome
- Sorry, no smoking
- Shop and pub 1 mile.

The cottage is advertised with Sykes Cottages (<http://www.sykescottages.co.uk/cottage/Cornwall-Fivelanes/Laburnum-Cottage-935455.html>)

Alternatively I live in the village and will be able to offer a discounted rate if you contact me directly on: Andy 01634 936095  
Mobile: 07958 604268



On Sunday June 11th the walk will be around the area of Sissinghurst Castle. We will start at 10.00 in Sissinghurst village and walk across fields and through woodland to take a circular route around the castle giving good views of some of the famous gardens. There is no public car park in Sissinghurst so parking should be close to the "The Milk House" gastro pub (TN17 2JG) on The Street or Sissinghurst Road which run into one another as part of the A262.

As ever all are welcome and queries can be made to [Mitch.Dowsett@btopenworld.com](mailto:Mitch.Dowsett@btopenworld.com) or 01634 254428.

## *High Halstow Village Hall Annual Report*

Last year saw the end of the building works associated with refurbishment programme. This refurbishment started as a result of the Parish Appraisal back in 2000, yes it was that long ago. I would like to take this opportunity to thank all of those who have made this happen, as without that support the dream of the refurbishment would have stayed that, just a dream. The committee may have had changes, the fund raising events may have been varied, we may have had different funders from time to time but what has been consistent is the support of the village behind this adventure and would hope you have been pleased with the final outcome.

The final parts of the refurbishment last year saw Phase Four, being the new bar and the finishing of the upstairs room now named the Blue Room, an additional facility for the village. Phase Five saw the floor sanded and varnished giving the floor another ten years life. Phase Four was funded by way of donations from various members of the community and although they do not wish to be named please be assured we are extremely grateful for their generosity. What is coming next? The Hall Committee will be looking to upgrade the tables and chairs and this will be a target for the coming year. We will also be looking into installing CCTV in order to protect the building and ensuring now that the Hall has been refurbished it stays in a good condition for years to come.

There are a number of people I wish to thank as follows:

- *Crystal Wakefield*, has announced that she will be standing down as Booking Secretary and I personally would like to say thank you for your dedication. Not only have you taken time out to show the many prospective hirers around the Hall, you have answered their questions in order to convince many of these people that this is the Hall to hire for their event/function. With the work you have put in, you have helped the Hall obtain not just occasional hirers but more regular permanent hirers as well.
- *Elaine Slatcher*, the Hall Cleaner. I have said before about the pride Elaine shows in her work and I can assure her it is always appreciated not only by the committee, but also by the many prospective hirers who are shown around the Hall. Again without this dedication I am sure many potential hirers would consider other venues other than this one.
- *Chris Peek*, who represents the Youth Club on the Hall Committee. They should be pleased that they have someone who supports the Hall Committee but their interests as well.
- *Lesley Munday*, not only takes the minutes, but is always there to provide support at events, especially with the bars. The knowledge and the history that Lesley knows has proved invaluable over the years
- *Margot Sturt*, has stepped in when Lesley was unavailable for the minutes and has undertaken a review of the terms and conditions as well as the hiring agreement. The recent repairs to the Fire door were also carried out by Margot
- *Ray Collins*, it isn't only the day to maintenance that Ray carries out, but it is the project management of the builders/contractors and undertaking the decorating etc he has once again carried out. This has saved the Hall Committee thousands over the years and is one reason why the building work phase of the refurbishment is now completed, so thank you.
- *George Crozer*, his support is important to the Committee as again his knowledge and knowhow is very much appreciated.
- *Margaret Church*, who though has moved several times further away from the Village over the years continues to support the Hall Committee and arranges the quarterly quizzes at the hall along with John Pink and Lesley and for that I am grateful.
- *Mick Woolmington*, this year wrote and produced the second Murder Mystery, and along with other members of Dramarama performed this event over two nights. In addition to the show the audience were treated to a three-course meal from Jo Mitchell, Wenda Taylor and their band of volunteers. Many thanks to you all not only for the event but enabling the Hall to raise funds for future improvements
- *Bob*, who with his staff in the shop help us raise minies by selling tickest, calendars etc. This is really appreciated.
- *Carl Mitchell*, not only for not charging the hall for printing of tickets, programmes etc but for the printing of the calendars each year, again which helps the Hall funds.
- *National Grid*, for the volunteering work carried out over the past year which saw the internal slide doors repaired as well as making and installing the new Village Hall sign, again it was very much appreciated.

Many thanks must go to the users of the Hall be it a regular or one off users. You play a large part not only in keeping the Hall going but helping make the Village the special place it is.

Thank you all.

Gary Thomas, High Halstow Village Hall Chairman

## ***High Halstow Village Hall Finance Report 2016/17***

Income levels remained more or less consistent although there was the loss of St James Centre weekly bookings. The cancellation was due to them cutting costs following a reduction in their funding rather than conditions at the Hall.

The main changes from 2015/16 were due to the refurbishment of the hall. As a result of the Hall works coming to an end, the Committee felt it was necessary to ensure the Hall was adequately insured and as a result the Hall was revalued resulting in a cost of £630 and additional insurance costs. It would be good to see an increase in day bookings not only to support the Hall but to see additional activities available in the Village.

In addition there was an opportunity in finishing the Hall works with Phase Five and the General Account transferred £4000 to the HUGH Account to pay for this. Ideally the General Account would have slightly more in its account to allow for the unexpected but believe this will occur during the coming year.

For 2017/18 the Hall Committee will be liable for Business Rates although at the time of this report the exact value is not known as we have applied for Rate Relief and therefore the exact percentage is unknown. The Hall charges for 2017/18 have been left at current rates at the moment but may be reviewed if the figure to pay is excessive

### **HUGH Fund**

The HUGH Fund obtains its funds from the following sources:

- Fund Raising
- Contributions from the General Account
- Donations

We have a number of regular fund raising activities under the banner of the HUGH Fund including the following:

- Quizathons which are always popular
- Sale of High Halstow calendars
- Various Bars including Queens Birthday Bash, Dramarama and Murder Mystery

As you can see this source of income was up over 50% over the past year

We have been extremely fortunate this year that we receive donations. I promise all that it is appreciated and I hope this means that we are doing something right. In terms of unspent monies from the HUGH Fund as at 31<sup>st</sup> March, we have just under £6,000 and this is likely to be for the replacement tables and chairs for the coming year.

Gary Thomas (High Halstow Village Hall Treasurer)

## **Report to High Halstow Parish From Cllr Roy Freshwater**

Apologies from Cllr Mick Pendergast who has to attend Medway Planning Committee meetings. Your Local Councillors continue to identify to Medway Council that they are very worried about the effect on the lives and health of the people living on the Hoo Peninsula and especially Hoo Villages because of the continued targeting of greenfield by developers and expansion of Medway villages to meet the employment and government housing targets of 29,463 new homes. We have made it clear we do not want \*Hoo Village or other villages to be turned into towns \*without the agreement of local people Medway Council knows thousands of extra people are being squashed into our communities under all four local plan scenarios. Medway Council continues to ignore the urgent need for major increases in the building of affordable homes for local people and key workers and workers earning mid or low local wages. The Council is only building homes for London commuters despite saying that the many important small businesses in Medway are reliant on local workers earning local low or minimum wages. We keep fighting for the need for massive investment in Hoo Peninsula roads which are gridlocked, home care services for the increasing elderly population to stop bed blocking in Medway hospital, mental health services and local GP services which we know on the Peninsula are already in crisis management and we are waiting over 14 days for an appointment in many areas. . We are worried about increasing pollution at all villages on the Hoo Peninsula and Medway Council failure to put any infrastructure funding before granting planning permission for homes, schools, water supply, waste management, warehousing and agriculture expansion. Section 106 money is going towards roundabout improvement. Local transport is totally unsatisfactory and inadequate for children travelling to school and local people. No one is building homes for local people. Who is going to build affordable homes to buy or for rent for local first-time buyers or to allow young people living with their parents in High Halstow e and other Peninsula villages to leave home - the answer 'No one'.

### ***Speed Limits***

Please can I remind people to observe the speed limits through the Village. We should all be mindful that High Halstow

is a nice place to live where children, older residents and walkers should feel safe. Some may not be as aware of the traffic as they might otherwise be. Please be careful.

**George Crozer, HH Parish Council**







## ***Friends of St Margaret's Church Annual Report 2016/17***

This is the fourth Chairman's report looking back over the past year of the Friends.

As pointed out last year half of all monies raised are set aside for the roof works which will be required in the not to distant future. Other monies are set aside for costs and medium term repairs. Last year it was reported that we waiting for the report to be provided by an architect or chartered building surveyor which is approved by the Diocesan Advisory Committee (DAC). This regular system of review is designed to ensure that church buildings are kept in good repair and is known as the Quinquennial. We have now had the report and agreed as the first part of ensuring the upkeep of the building that £1,000 will be spent each year on stonemason repairs as well as a further £1,000 being spent on pointing. Both activities in reality never end so it will be good to start the ongoing repairs in order to ensure this building stays in use. Further works will be prioritized on receipt of a plan from the Parochial Church Council.

In terms of monies spent in 2016/17 I am pleased to say we did pay for urgent electrical repairs, which have made the building safer and compliant with the appropriate regulations.

In terms of Fund raising events we had the following:

### **1 Cuxton Music Group**

I personally would like to thank this group in particular Ken and Maggie, for arranging two concerts over the past year. It was great to see the Church being used and to see both of these events so well supported by the community. You will be pleased to know that they will be back again this year with a performance on Wednesday 19<sup>th</sup> July, details in the HHT.

### **2 Scarecrow Festival**

On the back of the village event, the Queens Birthday bash saw the first Scarecrow Festival, which proved to be a far bigger success than anyone on the committee had ever expected. I would like to thank all of those who joined in the fun and would hope that this becomes an annual event for the whole community to enjoy.

### **3 Christmas Tree Festival**

Once again the Tree Festival occurred in the village and has become a regular event in the village. Once again trees from all parts of the Village by so many groups were entered. Again thank you to Karmann Dancers, Dramarama and the new Community Choir for the entertainment on the day. We are blessed to have so much talent within the village.

### **4 Santa's Visit**

Once again Santa and friends came to High Halstow on Christmas Eve. We were fortunate again that the money raised was donated to the Friends. Many thanks to all of those who make this happen, as this is the Village Event of the Year.

### **5 Christmas Cards**

Again Ray Collins once again organised the printing and sales of Christmas Cards for the charity. They really are appreciated not only by the committee but the people who have moved away and receive these as reminders as to what they are missing. They must question as to why they left in the first place.

Arranging and holding of quarterly meetings proved a challenge over the past year and this is something the new committee will need to resolve if they want to function properly. Fred Beringer left the Committee this year and was replaced by Stephen and I would like to take this opportunity to thank all of the committee members for their time.

Thanks to you all who have contributed by way of donations and/or by attending the various events that happened over the past year. Without this support the Friends could not do anything at all.

With your continued support the Friends can ensure that the Church is here for many years to come.

Gary Thomas  
Friends of St Margaret's Church Chairman



## *Friends of St Margaret's Church*

### *Finance Report 2016/17*

Without repeating myself too much from the Chairman's Report I need to comment on the financial statements circulated as follows:

#### Subscriptions

We started the year with twenty-three monthly subscriptions and ended the year with twenty-four. In addition we have a number of annual subscriptions. Gift Aid for the last four years was collected so the figure of £935 is higher than we would normally expect. I believe I may have to send some statements to individuals and will check accordingly.

#### Fund Raising Events

We didn't have a Cake Festival this year but did have two concerts from the Cuxton Music Group as well as a new event in the Scarecrow Festival. As well as our regular features Christmas Tree Festival and sale of Christmas Cards organised so well by Ray Collins we were once again lucky that the monies from Santa's Visit were given to the Friends. This saw monies raised by events increase from just under £1,500 the previous year to nearly £2,100 in 2016/17.

#### Expenses 2016/17

Expenses as always have been kept to a minimum with just insurance a small fee for the hire of the hall. £2,000 was spent on electrical works which due to the state of them was money well spent.

#### Grant Application

A grant application was made this year to the Coop who were offering grants to community groups. Unfortunately we were not successful in this application for works to the gullies but this should not stop the committee seeking further opportunities as they arise.

#### Balances

With the extra money received from Gift Aid for the last four years being reclaimed, balances went from £8,223.20 to £11,084.96. As previously mentioned we have set aside monies for the roof and this stand at £6,786.54 with other monies available at £4,504.42

#### Way Forward for 2016/17

This charity was designed for a gradual growth of funds in order to be able to support the PCC in its work.

Although there are two ongoing projects to be carried out each year in stonemason and pointing repairs we will be waiting for the PCC to determine priorities for future repairs. Grant opportunities may allow the committee to attempt to fast track other works if and when the opportunity arises.

Gary Thomas  
Treasurer

### *Parish Council Vacancy*

There is now a vacancy which will be filled by co-option. Written applications (letter or email) should be made to the Clerk by 30<sup>th</sup> June (contact details for the Clerk can be found on the back of this HHT), with a view to the vacancy being filled at the meeting to be held on 12<sup>th</sup> July.

HH Parish Council

### *Isle of Wight Holiday*

Fancy a holiday to the Isle of Wight ? Coach from the village direct to Shanklin for a 6 night break staying at the Langham Court Hotel on a half board basis. Travel on Sunday 10th September returning on Saturday 16th, 3 full day excursions are included. The hotel has entertainment most evenings and also an indoor heated pool. This is being arranged by the 'Friendly Club' but you do not have to be a member to join us on this holiday. If interested and would like more info please ring me, Margaret Whitebread on 250677.

The new look Medway Big Ride event will take place Saturday, 17 June 2017 as part of the [Medway in Flames](#) celebrations.

The event is designed to encourage residents to get on their bikes, becoming more physically active in an enjoyable and safe environment and is linked to [Medway Cycle Action Plan](#) and works in partnership with A Better Medway [Active Medway Cycle Groups](#) programme. Find out more about [cycling in Medway](#).



NEW for 2017: Medway Big Ride TogetherMedway Big Ride familyOrganise your family and friends and your bikes and join others near you on a mass ride, all for free.

The group rides - supported by guide riders - start from sites across Medway (see below) during the morning. They converge on Medway Park where you can join in the main event activities and collect your commemorative medals and t-shirt.

Free return shuttle bus services are available. Places must be pre-booked online.

#### The Routes and Rides

Deangate Ridge - Rochester Cathedral - Medway Park

Start time: 9.30am. Distance 8.3 miles.

Ride starts from Deangate Ridge Sports Complex, Dux Court Road, Hoo, ME3 8RZ (parking available)

FREE Dr Bike repair roadshow here Saturday, 3 June 1.30-4.30pm.

Innovation Centre - Rochester Cathedral Route - Medway Park

Start time: 9.45am. Distance 7 miles

Ride starts from Innovation Centre Medway, Maidstone Road, Chatham ME5 9FD. (parking available)

King Frith Playing Fields - Strand - Medway Park

Start time: 9.45am. Distance 6.8 miles

Ride starts from King Frith Playing Fields, Wigmore Road, Gillingham, ME8 0TD. (parking available)

Riverside Country Park - Strand - Medway Park \*Recommended family route

Start time: 10am. Distance 3.5 miles

Ride starts from Riverside Country Park, Lower Rainham Road, Rainham ME7 2XH. (parking available)

FREE Dr Bike repair roadshow here 10 June 9am-12.30pm.

The Strand - Medway Park \*Recommended family route

Start time 10.30am. Distance 1.3 miles

Ride starts from The Strand, Pier Approach Road, Gillingham, ME7 1TT. (parking available)

Rochester Cathedral - Medway Park

Start time: 10.30am. Distance 2.6 miles

Ride starts Rochester Cathedral, The Precinct, Rochester ME1 1SX (local P&D parking available)

FREE Dr Bike repair roadshow here 10 June 2pm-3.30pm (Bowley Hill car park) and 3.30-4.30pm (Esplanade).

Dr Bike repair, [MK cycling The Mobile repair experts](#), are supporting the Big Ride. If you want to find out more about servicing or cycle repairs please call Grant 07716854274 or visit website.





## Medway Adult Education

Whether you want to learn new skills for work, develop your creativity, turn a hobby into an income stream, or participate in learning activities with your children, Medway Adult Education will have a course for you.

- Learn more about [fees, concessions and refunds](#)
- We offer concessions and support for [learners with learning difficulties](#)
- Find out if you are entitled to a [Advanced Learning Loan](#)
- Get directions to your [nearest centre](#)
- Find out more about experience days and taster sessions. These are perfect for trying something new, or enjoy with a group of friends as a social event or as a memorable gift.

Contact Medway Adult Education by emailing [enquiries@medway.gov.uk](mailto:enquiries@medway.gov.uk) or phone 01634 338 400.

**Medway Adult Education**  
discover • learn • achieve

**New courses added**

[www.medway.gov.uk/adultlearning](http://www.medway.gov.uk/adultlearning)

**Contents**

Be creative	6
Fitness, health and wellbeing	20
Languages	22
Media and special interests	26
Computing	28
Your questions answered	31
Skills for work	32
GCSEs	37
English and maths	37
English for speakers of other languages	38
Supported learning	39
Volunteering	40
A Better Medway courses	46
Centre information	47
Small print	48
Index	49
Term dates and contact details	53
	55

**Welcome to Medway Adult Education**

**How to enrol**

**Starts**

**In person\***  
Come to our Rochester Centre, Eastgate, Rochester ME1 1EW

**Byphone** 01634 338400

**Bypost**  
Enrolment forms: [medway.gov.uk/adultlearning](http://medway.gov.uk/adultlearning)

**How to pay**  
We welcome cards or cheques

**Easy pay plan**  
Spread out the cost of your course, see page 50 for details

**Experience days and workshops**

**Try something new**

**Develop your skills**

**Talented tutors**

**Have fun**

**Perfect gift**

[www.medway.gov.uk/adultlearning](http://www.medway.gov.uk/adultlearning)

[Facebook](https://www.facebook.com/MedwayAdultEd) [Instagram](https://www.instagram.com/MedwayAdultEd) [YouTube](https://www.youtube.com/MedwayAdultEd) @MedwayAdultEd

The Friends of All Saints Church proudly present:  
**CBeebies favourites "The Three Half Pints" are coming to Allhallows, in a production called "The Three Musketeers" !!!!**



Where:  
 When:  
 How much:

All Saints Church, Allhallows  
 Saturday 9th September 2017 at 7:30pm  
 £10 (£8 for FoAS members)  
 £7: Children under 12; and OAPs

Ticket sales:

Phone: 01634 270404 Or 01634 271373  
 Or email: mskudder@gmail.com

Chaos, mayhem and slapstick stupidity reign supreme as the Three Half Pints swish their swords, buff their boots and flourish their feathers in their most ridiculous adventure yet.

Will they defeat the dastardly evil-doers?  
 Will they save the damsel in distress?  
 Will they read the book before writing this show?

Nobody knows... but you can bet the CBeebies favourites will provide a hilarious slapstick adventure of chivalry, swordplay and suddenly falling over.

The seventeenth century has never been so silly!

## High Halstow Arts & Crafts Village Market

Handmade Cards & Jewellery,  
 Tattoos, Hand Bags,  
 Gifts, Make-up, Collectables,  
 Cakes and Treats.  
 Refreshments available.

The Memorial Hall  
 10am - 2pm

Sunday 11th June  
 Sunday 9th July

Come and support our village event!

## Heron Awards 2017

Every day sees acts of kindness, generosity, sacrifice and courage in our small community. From the friend who visits sick neighbours to the single parent struggling to raise young children alone. From the sick child who always has a smile to those who work sacrificially to ensure our community is a wonderful place to live in. The High Halstow Relief in Need Charity is once again sponsoring the Heron Awards. It has been 10 years since we ran our community award scheme so there are lots of people out there who deserve to be recognised and thanked for the difference they make to all of us. So often we don't realise what a difference a person makes till they are no longer here and it dawns on us what we have lost. Let's try our best to change that and say thank you while they are still here. Maybe what they do will inspire others to do the same. There will be a special award night on 28th June so book the date now and join with us as we celebrate the efforts of our friends and neighbours.

There are two main categories: "Junior" (under 16), and "Adult" (over 16). Each main category has 3 further divisions as listed below. There will also be an overall "Community Hero" chosen by the judges from the nominees. Applications must be completed in full, put into a sealed envelope marked "Heron Awards" and deposited in the Rectory letter box (2 Cooling Road High Halstow, ME3 8SA) no later than **10th June 2017**. Applications may be supported by a maximum of one A4 page of supporting information, but no photographs. The judges are nominated by The High Halstow Relief in Need Charity and the judges' decision will be final.

### Rules & conditions

You may nominate anyone who lives, works or attends school in the village or makes a significant contribution to the village

A nominee may only be nominated for one category and in the event of a nominee receiving more than one nomination the judges will decide into which category he or she should be entered.

the more information you give us about the person and why they deserve an award the easier it will be for the judges to make a decision

The number of nominations will not affect the judges' decision **BUT** the quality of the supporting information will.

Illegible nominations will be discarded.

Nomination forms & supporting documents will not be returned.

The Judges may also present a special community award to anyone the feel has made a significant contribution our community.

<i>Junior</i>			
Educational effort/ courage	<input type="checkbox"/>	Community involvement	<input type="checkbox"/>
		Environmental care	<input type="checkbox"/>
<i>Adult</i>			
Caring neighbour / courage	<input type="checkbox"/>	Community involvement	<input type="checkbox"/>
		Environmental care	<input type="checkbox"/>
Name, address & tel. no. of Nominator .....			
.....			
Name & address of Nominee .....			
Reason for Nomination .....			
.....			
.....			
.....			



## *Dates for Diary*

### *Every Tuesday:*

King's Kitchen

10:00

Memorial Hall

Bell Ringers

19:30

St Margaret's Church

### *Every Thursday:*

Seated Exercise

11:00 - 11:45

Memorial Hall

Sugar Babes

19:00

Memorial Hall

### *Every Saturday:*

Karmann Dancers

09:00

Memorial Hall

KLUK Martial Arts

09:30

Village Hall

### *Every Sunday:*

Déjà Vu Spiritual Centre

18:30

Village Hall

### *Every other Monday:*

Community Choir

20:00

St Margaret's Church

### *Every 3rd Wednesday:*

Whist Club

14:00

Memorial Hall

### *Every 4th Wednesday:*

Friendly Club

14:00

Memorial Hall

### *Other Dates:*

Sunday 4th:

09:30

Family Service

St. Margaret's Church

Wednesday 7th:

19:30

Women's Institute

Memorial Hall

Tuesday 13th:

20:00

Gardening Club

Memorial Hall

Wednesday 14th:

20:00

Parish Council

Memorial Hall

Sunday 18th:

09:30

Family Service

St. Margaret's Church

Wednesday 21st:

14:00

Whist Club

Memorial Hall

Friday 30th:

20:00

Quiz Night

Memorial Hall

*Local groups, please let us know the dates of your meetings/events for the coming year so we can include them in the HHT and on the website.*

## ***The Village Shop***

### ***Opening Hours***

Monday – Saturday 7am – 8pm

Sunday 8am – 5pm

Telephone number: 01634 254561

## **Kings Kitchen**



**A Coffee and Cake Café  
for the Whole Village.**

**Open 10.00am - 1.00pm**

**every Tuesday**

**in the Memorial Hall.**

**Why not come in and enjoy a  
cuppa and a chat.**

**A warm welcome awaits you.**

## ***High Halstow Relief in Need Charity***

The charity has existed in High Halstow for many years and is an amalgamation of smaller charities/private trusts, the oldest of which dates from 1716. It is to help the residents of the parish of High Halstow who are going through a time of need or hardship; this includes widows and widowers but also is there to help other people of all ages and from all walks of life. Requests can also be made by organisations or groups in the parish.

Requests for financial assistance can be made, at any time of the year, in writing or by email or in person to any one of the Trustees. A resident can apply on behalf of someone else in the village but their permission must be obtained first. All requests are dealt with in the strictest confidence. If you are not sure about a request and think it may be rejected, do not be afraid to speak to any of the trustees about it. Funds are there for people who need help.

### **The Trustees are:**

Rev. Stephen Gwilt	–	The Rectory, 01634 250637
Mr Stuart Bailey	–	27 Cooling Road, 07976 760844
Mrs June Collins	–	6 Marsh Crescent, 01634 250105
Mrs Lesley Munday	–	22 Willowbank Drive, 01634 250276
Mr John Myatt	–	Decoy Hill Road
Mrs Chris Peek	–	2 Willowbank Drive, 01634 252604
Mrs Natasha Turner	–	12 Marsh Crescent

Office email address: [office.hhrin@gmail.com](mailto:office.hhrin@gmail.com)

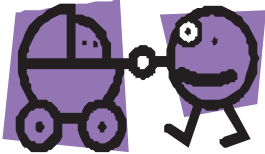
## Considerate Parking

Mums with babies and older people are finding it more and more difficult to walk around the village due to cars parked on the pavement. They are having to walk into the road because of this, which is dangerous and unnecessary.

Consideration should also be given to access for Emergency vehicles, such as fire engines etc.

Please think about this before you park your car/van and try to be a little more considerate.

Thank you  
High Halstow Parish Council



## HH Village Website

Please visit the Parish Council website for everything about our village. You can see the minutes of your Parish Council or look up local groups in the village, past copies of the High Halstow Times, and pictures of recent events. Please note that there is now an RSS feed on the Parish Website where you can get automatic updates when the site is updated. Please visit [www.highhalstow.org.uk](http://www.highhalstow.org.uk) and follow the instructions on the right hand side.

## Battle of Medway Anniversary Event

Medway will be welcoming visitors from far and wide in June, as the 350th anniversary of the Battle of Medway is commemorated through a fortnight of events, including spectacular displays, one off exhibitions and VIP visits.

The battle, in which the Dutch launched a daring assault on the English, has great national and international significance due to its momentous consequences impacting the British economy. The battle led to huge investment in new ships and dockyard facilities, laying the foundations of British supremacy at sea for the next 200 years and contributing to Britain's economic success and the growth of the empire. It also eventually led to the Dutch monarch becoming England's king after the Glorious Revolution.

Three-hundred-and-fifty years on, it's time to remember the epic events of June 1667, an often forgotten dark time in Medway's naval history, with a two-week extravaganza from 8-17 June, full of entertainment, history, and education.

Among the events will be a new Heritage Lottery funded Battle of Medway gallery at Upnor Castle, the very epicentre of the Battle, and a one off exhibition at the Historic Dockyard, Chatham which will explore the battle through contemporary accounts and items of significance borrowed from Dutch and UK national museums. The Command of the Oceans galleries, also at the Dockyard, will highlight the major investment in new ships and Dockyard facilities as a result of the battle.

The grand finale event on 17 June, called Medway in Flames, will be held at the battle site on the River Medway at Chatham overlooked by Upnor Castle and The Historic Dockyard, from which the English fired at Dutch vessels in a bid to stop the onslaught of their ships.

Visitors from far and wide are invited to enjoy the fortnight of events and what is set to be a magnificent, large scale finale event, reliving the action that dramatically brought the second Anglo-Dutch war to an end. Expect water screens, projections, characters, pyrotechnics, special effects, fireworks and much more.

The events in June will not only remember what happened, but also highlight the relationship and growing connections between the Dutch and English – from fire to friendship. The Dutch too will be celebrating the anniversary of The Battle of Medway, or Tocht naar Chatham as it's known in the Netherlands which translates as Journey to Chatham, during the week commencing 19 June.

All commemoration events in Medway have been organised by Medway Council and the Historic Dockyard, Chatham.

Richard Holdsworth, Preservation & Education Director at Chatham Historic Dockyard Trust said: "The events of June 1667 marked a significant moment in our national story and we are delighted at this opportunity to take part in the celebrations and display extraordinary objects from the period held in Dutch and British national collections.

"Visitors will also be able to enjoy our Command of the Oceans galleries telling the complete dockyard story from the period and the role it and the people of Chatham played during this and other important events in British and world history. It's going to be quite a year."

**Learn GUITAR**

Professional guitarist and guitar teacher offers 1 to 1 tuition. All ages and abilities welcome. Graduate of London Guitar Institute and playing experience includes The Who and Robbie Williams. Can inc practical, grades & theory.

CHRISTMAS VOUCHERS AND DEALS AVAILABLE  
HOME VISITS OR AT HOME STUDIO IN CHRISTMAS LANE

**Call Matthew 07967 125091**

07967 125091 GUITAR LESSONS  
07967 125091 GUITAR LESSONS  
07967 125091 GUITAR LESSONS  
07967 125091 GUITAR LESSONS  
07967 125091 GUITAR LESSONS  
07967 125091 GUITAR LESSONS  
07967 125091 GUITAR LESSONS  
07967 125091 GUITAR LESSONS  
07967 125091 GUITAR LESSONS  
07967 125091 GUITAR LESSONS



Sponsored By  
ASSOCIATED GARAGE DOORS  
**HERON GOLF SOCIETY**  
**PRESENTS**



# THE 13th SUMMER CHARITY GOLF DAY

(In Aid of Animates Animal Sanctuary)

**POULT WOOD GOLF CLUB**

**HIGHAM LANE, TONBRIDGE, KENT, TN11 9QR**

**WEDNESDAY 26th JULY, 2017**

COME & HAVE  
A GREAT DAY  
OUT!



**ARRIVE 8.30am**  
**BACON SANDWICH, TEA & COFFEE**  
**9 HOLE TEAM TEXAS SCRAMBLE**  
**PLUGHMAN'S LUNCH**  
**PUTTING COMPETITION**  
**18 HOLE INDIVIDUAL COMPETITION**  
**2 COURSE EVENING DINNER & PRESENTATION**  
**OVER £1000 IN TROPHIES & PRIZES**  
**FOR A GREAT DAY OUT!**  
**INDIVIDUALS, PAIRS, THREE BALLS, FOUR BALLS**  
**& GROUPS WELCOME**

FREE  
GOLFERS  
GOODIE  
BAGS

FREE  
GOLFERS  
GOODIE  
BAGS

**£65**

**Per Person**

**IF INTERESTED,  
PLEASE RING MARK CRANE ON**



**01634 251126**

## Murder Mystery Evening



## The Pink Heron Club

You are invited to join us in the Caribbean for a 70's Hen and Stag night with a mysterious end...

**Friday 16th and Saturday 17th June**

**High Halstow Recreation Hall**

**Doors open at 6:30pm**

**Seats by 7pm for 7:30pm Show**

**Tickets £10 to include 3-course meal**

**Licensed bar available**

**Tickets available from Wenda on 253169**



Based in High  
Halstow  
Contact Jade  
07708 394979



Permanent Makeup is an advanced technique used to apply coloured hypoallergenic pigments into the dermal layer of the skin. The pigments are made from natural minerals making enhancements look very natural that can last for years but will fade over time.

### Treatment areas:

**Brows:** Eyebrows frame the face, with the right shape & colour brows it can make you look years younger

**Eyes:** It can be difficult to apply eyeliner correctly & make it last all day. Define your eyes with eyeliner or lash enhancement.

**Lips:** Define & enhance your lips with a gorgeous lip liner, blush or full lip colour.

**Book a free consultation to see how Permanent Makeup can help you.**

**[www.serenitypermanentmakeup.co.uk](http://www.serenitypermanentmakeup.co.uk)**



## High Halstow Pre-school

Modular Building, Primary School, Harrison Drive,  
High Halstow, Rochester, Kent. ME3 8TF  
01634 255088

Proprietor/Manager Mrs Anita Russell BA (Hons), EYPS

- ✓ 'Outstanding Provider' Ofsted
- ✓ 2009-10 Extensive Outdoor Facilities
- ✓ Excellent Links with Primary School
- ✓ Friendly, Qualified Staff
- ✓ Affordable Childcare

**Open Weekdays, term time only**  
**8.45 am - 3.30pm**

**Morning, lunch, afternoon and all day sessions available.**

**Children are funded for 5 free sessions the term following their third birthday.**

**Don't take Ofsted's word that we are an outstanding provider, come and see for yourself.**

**Ring 01634 255088**

## *Readers Letters/Painting*



Dear HHT,  
I recently completed this painting of an H Class  
and 2 carriages at High Halstow Halt and  
wondered if it is of any interest to your  
historical people. I lived in Eden Road from  
1955 to 1967.

High Halstow Halt c. 1960

Regards,  
Vic Court

### ***Dog Walkers***

Our rights of way and green spaces are for us all to  
enjoy. Please be aware that if you are exercising  
your dog it should be under control at all times, and  
it is your responsibility to clear up it's mess  
afterwards. Dog fouling is an eyesore, a serious  
health hazard and an environmental crime. Please  
clean up after your 4-legged friend.

### ***Your Parish Councillors***

George Crozer, Chair	01634 250286
e.mail: <a href="mailto:george@highhalstow.org.uk">george@highhalstow.org.uk</a>	
Christine Watson, Vice Chair	01634 256529
Martin Andrews	07984 791029
Linda Atkinson	07825 619353
Ray Collins	01634 250105
Gary Jerreat	01634 253999
Bill Khatkar	07775 668620
Brian Williams	07908 006448
e.mail: <a href="mailto:bdwilliams9@hotmail.com">bdwilliams9@hotmail.com</a>	

Your councillors may also be contacted  
through the Parish Clerk:

Mrs Roxana Brammer 01474 871269  
[clerk@highhalstow.org.uk](mailto:clerk@highhalstow.org.uk)

Next edition July 2017; Contributions for July should be sent  
by 24th June to:

Carl Mitchell, 8 Marsh Crescent, High Halstow ME3 8TJ  
or e.mail to [editor@highhalstow.org.uk](mailto:editor@highhalstow.org.uk)