



High Halstow TIMES



Home of the Heron

July 2010

Learn something new with Medway Adult Education

Do you want to put your grey matter to the test and learn something new? The latest Medway Adult Community Learning Service (MACLS) directory is available now and is crammed full of exciting and fun courses, from learning a new language to brushing up on your maths and English skills, to discovering how to make your own clothes and basic DIY skills.

There are a wide range of courses available for everyone of all ages who want to learn a new skill to improve their employability during the recession, with computing courses, website design, book keeping and the national Train to Gain qualifications.

More than 7,000 people studied with MACLS in 2009/10; the youngest was a six-month old baby on a baby massage course, the oldest was 84-year-old.

Families are also encouraged to spend quality time together, while learning valuable skills such as cookery, craft and sports and leisure. Gillingham FC is providing football coaching sessions for dads and their children, while families can learn about nature on a mini beast safari at Capstone Farm Country Park.

MACLS teamed up with the Hundred of Hoo School in the spring to extend the range of courses on offer to people living on the Peninsula and surrounding areas who may not be able to attend courses at our other centres. The initial response was overwhelming and the range of courses has been increased.

Portfolio Holder for Community Services Cllr Howard Doe said: "This directory offers a wide range of courses, whether you want to learn a new skill and improve your career prospects during the recession, or just want to learn for fun.

"Our family learning day sessions also offer parents and children the chance to spend some quality time together, while learning valuable skills such as cookery, crafts, sports and leisure.

"We are committed to giving everyone the chance to learn something new and I would encourage anybody, no matter what age, to have a look through this directory and sign up for a course. Learning can be great fun – give it a go."

Phone 01634 338400 or visit www.medway.gov.uk/adultlearning for more information.

Rectory Garden Party: Saturday 3rd July

Memorial Hall AGM: Monday 5th July

Dramarama Summer Show: Thursday 15th - Saturday 17th July

Parish Council Meeting: Wednesday 21st July

Farmers Market / Car Boot Sale: Saturday 31st July

Back to Skool Disco: Saturday 25th September

Dolly Parton Tribute: February 2011

High Halstow and District Gardening Club

Garden Party at The Oast, Saturday 12th June

A Garden Party for club members and their guests was held at The Oast, Ducks Court Farm on Saturday 12th June. More than 60 people attended and fortunately the weather was kind to us, so we had a lovely afternoon! The Committee and other members of the club worked very hard indeed, making it a highly successful and enjoyable event. Home made refreshments, home made cakes, plants, books and bric-a-brac were sold, "a bunny" was named and a raffle was held. We made a profit of £440, which was fantastic! Thank you very much indeed to everyone who attended for your support, it was greatly appreciated.

Garden Judging on Friday 9th July

We would be delighted if you would like to enter for the 'Best Garden' award this year! Wendy White will be in contact with you if you have entered before, but anyone in the club is welcome to enter, so please let Wendy know if you are interested. The Judge will also choose the best hanging baskets and tubs. The judging will take place on Friday 9th July and the winner will be announced at the Annual Summer Show on Saturday 28th August.

Next Meeting

The next lecture is on 13th July and is about "The Heritage Seed Collection" by Nick Robinson. This promises to be extremely interesting, so do come.

Gwen Bucknall

Parish Council July Meeting

The July meeting has been moved to the 3rd Wednesday in July, the 21st, due to a number of councillors unable to make the normal date. The meeting will start at 8pm in the Memorial Hall. The public are welcome to attend and will be given the opportunity to participate. There is not a scheduled meeting in August due to summer holidays etc.

Project 90 has also been moved back by a week and will now be on Saturday 24th July.

High Halstow Memorial Hall

The Annual General Meeting for the Memorial Hall will take place on 5th July 2010 at 8pm. All regular users of the Hall are invited as are any members of the public who have questions or suggestions for improvements to be considered by the committee.

WI Report

Our annual meeting in May was pretty busy with lots of reports, formation of a new committee, and a member's report on her 3 day watercolour course at our W.I. college in Oxfordshire. We ended with quizzes and refreshments. Our lunch club has visited the Golf Club again, always a good venue.

In June we enjoyed a wonderful 3-course lunch (which really was 7), cooked and served in a members own home.

Last month we celebrated our birthday with lots of visitors that made a lovely atmosphere. We were entertained by Robin who told of the history of panto, he was joined by Graham dressed as a 'Dame' which was the highlight of the evening.

Several members had a great day out in Tenterden with retail therapy, lunch, guided tour of the town, and ending the day with tea provided by the ladies of Tenterden W.I. Next meeting is Wednesday July 7th when Dr. McKeever will be telling us about Cosmetic Medicine. 7:30 in the Memorial Hall, £1:50 on the door, all ladies are welcome.

Margaret Whitebread

High Halstow Mother & Toddler Group Summer Activities 2010

- We meet every Thursday 9.00 – 11.00, at the Memorial Hall (term time only)
- All children from ages 0-4 welcome - £1.00 for first child and 50p for any additional children
- Squash & biscuits are provided plus hot drinks for the grown-ups
- Large selection of toys to play with plus weekly activities
- Special events, guests & parties
- Coming Soon, visits from **The Book People** and **Pheonix Cards**

8th July FANCY DRESS & FACE PAINTING (own outfits required)

15th July SPORTS & PICNIC 10 – 12 at the Recreation Field

22nd July BRING & BUY SALE (good quality 2nd hand kids bits)

Please note that we will re-commence after the summer holiday, on 9th September.

Marie Calvert

Resume of Parish Council Meeting Held on 9th June 2010

The Chairman being on holiday, Cllr Gary Thomas chaired the meeting, which was also attended by one member of the public.

After the initial formalities, councillors went outside to see a demonstration of the new "speedwatch" device, now purchased by the police. This will be available for use by parish councils, with operation being carried out by volunteers. The device will have to be booked with the police who will advise and give full training to the volunteers. Please contact the Clerk or any parish councillor if you would like to be a volunteer. On the subject of speed – it would appear from the signs that you can do the national speed limit (ie 60 mph) from the A228 up Christmas Lane to the start of the 30 mph limit, but on you way out of the village you go from 30 mph to national speed limit to 40 mph. The Parish Council considers this confusing and unnecessary. We would like to see Christmas Lane changed to 30 mph on its entire length or failing that 40 mph in both directions.

Bird nesting boxes have been appearing on trees in the Recreation Ground. The Parish Council would like to remind everyone that the ground belongs to the Parish Council and that permission should be requested.

Medway Council has been asked to find an alternative site for the recycling bins, as the present site enables youths to use them as a stepping stone to access the roof of the public conveniences and encourages vandalism. In addition, the vehicle that empties them is much bigger and heavier now than it was ever envisaged would be going onto the car park and it is suspected that considerable expenditure in the last few years is a result of this. We would remind you that the costs of vandalism and of repairs to the car park fall ultimately on you, the residents, through the parish precept, but we do not wish to see the opportunity to recycle disappear. So far we have not heard that an alternative site has been identified.

A discussion was held on the advantages and disadvantages of CCTV in the car park and of the ability to provide good enough evidence to effect conviction.

Permission was given for a football cage to be on the Recreation Ground on a day during half term. This was popular and a councillor asked for the subject to be put on the agenda for the next meeting.

After the meeting, it was realised that if the July meeting was held on the normal second Wednesday, it clashed with the Dramarama performance and there was not likely to be a quorum. Consequently the July meeting will be held a week later on Wednesday 21 July.

Say Cheese !



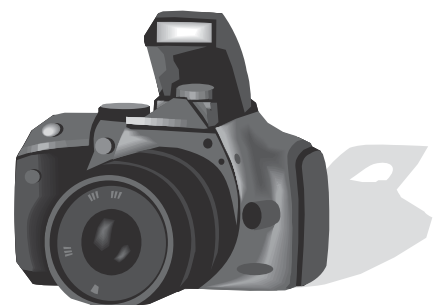
Building on last years success we are again running a photographic competition to try and find High Halstow's best photographers for 2010. The categories are simple.

Under 16's anything in the village . For the Over 16's there

are 3 categories, People, Places & Fauna and Flora. All photographs must be taken in the parish boundaries, they must be clearly marked as to who took them where they were taken and when they were taken and contact details. Maximum 4 entries per person. In addition where photographs of children are submitted, parental approval of ALL the children on the picture must be included with the entry. As the winning photographs will be included in the 2011 High Halstow Calendar, photographs MUST be of sufficient size and quality to enable enlargement and reproduction. The Judges decision will be final and no correspondence can be entered into. Winners will be announced at the parish council meeting in October 2010.



All entries to be posted through the Rectory letter box by Friday 3rd September 2010. Digital entries should be on a CD or DVD where possible. For Further details Please Contact Rev Stephen Gwilt on 250637



Village Hall

The Village Hall Committee have now received Planning Permission for the proposed works. We will now be inviting tenders for the work, whilst continuing to approach organisations for funding. The next Hall meeting will be on Wednesday 21st July at 7:00pm. Mrs Chrystal Wakefield has agreed to take on the role of booking clerk from Ann Smith. The Committee would like to thank Ann for all the hard work over the many years. The Hall had another window broken at the front which was boarded-up on Project 90. Two fund raising events have been organised; a Back to Skool disco and Dolly Parton tribute evening. The Committee is always looking for new members and fresh ideas, so please don't be shy.

HH Village Hall Committee



All types of domestic maintenance work.

Hanging a door, fixing a shelf, building a wardrobe, repairing a gate.

No Job too Small..

NH Carpentry & Maintenance
12 Willowbank Drive,

High Halstow, Rochester, Kent ME3 8TW
Tel: 01634 253542 Mobile: 07738 649067

The Friendly Club

The Friendly Club will not meet as usual on 27th July. Instead members will be enjoying the high-life in Eastbourne. Good company and happy dispositions promises a brilliant day out - the weather will not matter as we have arranged for a sunny day, although not too hot. Next regular meeting will be in the Memorial Hall, 2pm Tuesday 24th August. Our plans for that date are not yet complete although from the wonderful progress Sheila has made she might well give a demonstration of Salsa dancing.

Recycling Banks

The Parish Council again discussed whether we wish to have the recycling bins removed from the Parish Council car park.

Three locations were identified, close by the vets in Christmas Lane, in the car park in Deangate and on the grass common area on the new estate. It was again agreed to wait for Medway Council to come back with their thoughts on where the bins can be re-sited too. Please let us know your thoughts on these possible sites by e-mailing to editor@highhalstow.org.uk or contacting one of your HH Parish Councillors.

HHPC

Jonathan Computers

Contact Jonathan on:

Freephone: 0800 321 38 79

Email: sales@jonathancomputers.co.uk

(I live in High Halstow so can offer a great local service!)



Computer problems solved quickly and cheaply...with a friendly face

- Speed up Slow computers (to very quick)
- Virus removal, Data Transfer & Recovery
- Fix Broadband connection issues
- Set Up Network Printing On Computers
- Optimise & Speed Up Your Broadband
- On Site Install of Computer Equipment

Want to get into this whole Computer thing!

I can supply a new or reconditioned computer for you with a 17" Flat screen monitor, install it in your home, organise a broadband connection, set up an email address for you and even give you an hours training on how to use it all!

All Inclusive Cost from - £ 350.00 *

Do you want some training on using a computer?

I can help with one-to-one training, either beginner lessons or more advanced if required. Need help with writing letters (Word), Spreadsheets (Excel), emails (Outlook), or may be just using the Internet (Microsoft Explorer/Firefox), even programs like Facebook, MSN messenger, Google, Amazon and Skype etc

(* Terms & Conditions Apply, Please enquire for details)

RSPB Northward Hill showcase for local schools

Local schools attended a showcase day at RSPB Northward Hill last Friday (18 June) to take part in a range of field teaching activities on offer at the reserve.

David James, lead field teacher, said: "We have been working with Kent Schools Advisory Service and teachers since the beginning of the year to design an exciting series of activities linking birds and wildlife into the Information and Communication Technology (ICT) curriculum.

"The showcase days aim to build on classroom topics to show groups of children and their teachers how much can be achieved during a visit to a nature reserve."

As part of the ongoing project, groups of gifted and talented children from 8 local schools visited RSPB Northward Hill to take part in pond dipping, mini-beasting and bird watching along with activities with a focus on ICT and outdoor learning.

The children used data loggers to explore the habitats, GPS logging on the trails, videos, sound recorders and cameras.

As part of the wider project, pupils have been able to watch nesting birds via nest box cameras, link up with overseas schools to find out about migrating birds and share their experiences via the Kent Birdwatch 2010 website.

David added: "This is an exciting opportunity for Key Stage 1 and 2 pupils in and outside the classroom to use a range of ICT resources to discover and learn more about wildlife and conservation issues associated with the many species of birds that live in and visit Kent."

Phil Bracegirdle, of Kent Advisory Service, said: "This activity day is a wonderful opportunity for gifted and talented young scientists from schools in the area to visit the Nature Reserve at Northward Hill and work alongside RSPB Education Staff."

There has been a Living Classrooms Teaching Scheme at RSPB Northward Hill for the last 5 years. Each year up to 500 school children engage with the scheme either on or off the reserve and last year, the education team was awarded the Quality Badge for Learning Outside the Classroom.

Need to Hire a Hall

If you are interested in hiring either of the halls in the village for a party, function or meeting please contact :

Memorial Hall - Angela Forward 251756
Village Hall - Ann Smith 251914

Please avoid phoning on a Sunday as we are often busy with family and won't be able to take your booking.

HH Village Website

The Parish Council website has been relaunched. Did you know you can see the minutes of your Parish Council on our website! If that is not your cup of tea, you can also look up local groups in the village, past copies of the High Halstow Times, and pictures of recent events. A reminder for local groups is that you can advertise your activities free of charge on this site just let us have the details.

For all your village needs the site is:

www.highhalstow.org.uk

Local businesses can now advertise on the village website, please visit the site for info.

PROJECT 90

90 minutes spent improving the village

Saturday 24th July

8:30am Start at the Village Hall

Free Tea, Coffee, Cakes and Buns afterwards for all the helpers

Your Parish Councillors

George Crozer, Chair 01634 250286

e.mail: george@highhalstow.org.uk

Gary Thomas, Vice Chair 01634 252812

e.mail: gary.thomas@medway.gov.uk

Martin Andrews 07984 791029

Angela Bostock 07880 531641

Ray Collins 01634 250105

Carl Mitchell 01634 250911

Martin Mitchell 07531 984169

Lesley Munday 01634 250276

Your councillors may also be contacted through the Parish Clerk:

Mrs Roxana Brammer 01474 871269

Dates for Diary

Every Tuesday	Memorial Hall
Kings Kitchen	
09:00 - 12:00	
Every Wednesday	
Painting & Drawing for Beginners	
10.00	Memorial Hall
Every Thursday	
Mother and Toddler's	
09.00	Memorial Hall
Sugar Babes	
19.00	Memorial Hall
Every Saturday	
Karmann Dancers	
09.00	Memorial Hall
1st Friday of Each Month	
Youth Night	Memorial Hall
19:30 - 10:00	

Other Dates for July '10

Wednesday 7th	Women's Institute
19.30	Memorial Hall
Tuesday 13th	Gardening Club
20.00	Memorial Hall
Thursday 15th -	Dramarama Summer
Saturday 17th	Show
19:30	Village Hall
Wednesday 21st	Parish Council
20:00	Memorial Hall
Saturday 24th	Project 90
08.30	Village Hall
Friday 30th	Quiz Nite
20.00	Village Hall
Saturday 31st	Farmers Market &
	Boot Fair
0930 - 11:00	Village Hall

Sunday 4th July HHCC v Fordham

Having won the Kent final of the NPower National Village Knockout Cup last Sunday we now play Fordham, winners of the Cambridgeshire and Norfolk final. We are hosting at Rayners Meadow and our visitors expect to bring about 50 supporters, and it would be very good to match if not outdo them.....It is a 1 pm start (or immediately following the Colts match). Barbecue and bar open all day, raffle in aid of club funds. Please do not park in Christmas Lane - use other facilities around the village.

Village Speed Limit

Please be aware that the speed limit within the village is 30mph, speeding is a major cause of accidents and fatalities are more likely at speeds above 30mph. Some areas are considering lowering the speed limit to 20mph in built up areas. Traffic Police can prosecute anyone exceeding the speed limit.

Speedwatch

Medway Police have purchased additional speed camera devices to be used by Parish Councils to monitor speeding within their own Parish. The cameras can be operated by teams of volunteers who take note of registration plates of speeding motorists. A warning letter from the Police will be sent to persistent offenders. If you are interested in volunteering for this scheme please contact the Parish Clerk or any other of the Parish Councillors.

HH Parish Council

Domestic, Commercial & Insurance Work Undertaken, Fully Insured

EXTENSIONS • KITCHENS • BATHROOMS
 GARAGE CONVERSIONS • BRICKWORK • FENCING
 WINDOWS & DOORS • CONSERVATORIES • TILING
 CARPENTRY • ROOFING • GLAZING • PLASTERING
 PAINTING • ELECTRICS • DRIVEWAYS • BLOCK PAVING
 RE-POINTING • PLUMBING • PVCu SOFFITS, FASCIA & GUTTERING
 PORCHES • ALARMS • DRAINAGE WORKS • FELT FLAT ROOFS



For High Quality Work At Competitive Rates



Medway Maidstone Gravesend Sittingbourne London



aaaaaa **HARVEYS BUILDERS LTD** 

www.harveysbuilders.co.uk

01634 222202

info@harveysbuilders.co.uk

Harveys Builders Ltd
 Havisham House,
 Main Road, Cooling,
 Rochester, Kent
 ME3 8DH

**HIGH HALSTOW & DISTRICT
GARDENING CLUB**



ONLY GARDENING CLUB ON THE PENINSULA

COME AND JOIN US, PLENTY OF ACTIVITIES

SPRING SHOW (Members only)

ANNUAL SHOW (Open to all)

OUTINGS

MONTHLY MEETINGS with SPEAKERS

at MEMORIAL HALL (2nd Tuesday of month)

BRING & BUY SALE

**For more information contact -
GWEN BUCKNALL (01634 250456)**

Can't Stop the Beat

***Dramarama
Summer Show 2010***

***Dance, Sketches,
Songs and more***

***July 15th, 16th & 17th
7:30pm***

***Tickets £4.00 each from
Fred & Hazel (251135)***

or

Noleen (271026)

***The Rude Mechanical Theatre Company's
2010 Summer Tour
'Ik'r'us Inc'***

Probably the best open air theatre event you will see this year! On 28th July the RSPB North Kent Marshes will be hosting this brilliant theatre company at RSPB Northward Hill, Cooling near Rochester, Kent. Gates open at 6.00pm for picnics. Performance starts at 7.30pm. Tickets £11 per adult, with concessions for seniors (£10) and group bookings (10+ group are £9 per adult). Tickets are now on sale - by visiting this website

www.therudemechanicaltheatre.co.uk, or by phoning the Central Box Office on 01323-501260.

Please bring your own seats or rugs. Parking and toilets on site. A beautiful countryside setting for a good laugh and some excellent music on a summer evening. Can get chilly later so bring a jumper or a hot toddy or a hot companion!

'Ik'r'us Inc'

Set in Dreamville, Indiana, in 1955, this hilarious but touching story weaves together the ancient myth of Daedalus & Ikarus and the everyday lives of factory workers in a small American town, whose hopes & ambitions suddenly seem possible when a commercial traveller comes into town with his suitcase full of dreams. Full of rock'n'roll performed by six of the best actor / musicians in contemporary physical theatre.

Lyn Gardner, The Guardian - 'A crucial part of our theatre ecology'.

***Dolly Parton Tribute Act Returns
February 2011***

We are pleased to announce the return of Dolly Parton Tribute night at the Village Hall. In February 2001 she will be returning along with Kenny Rogers and Shania Twain. This show was a great success last time and everyone agreed how much fun it was. Even if you are not a fan of Dolly's music you will have a great evening out on your own doorstep. Ticket info to follow soon.

Note from the Editor

The High Halstow Times is a friendly point of contact and all views expressed are those of the individual. No letter will be published without the name and address of the writer being supplied to the editor, although this information may be withheld from appearing in the HHT upon request.

Past copies of the HHT are available on the village website www.highhalstow.org.uk

If you have a matter for complaint, it should be brought to the attention of the Parish Council, which meets on the second Wednesday of every month, at 8pm in the Memorial Hall. Members of the public are always welcome.

Advertising rates are £15 per quarter page per edition; £30 per half page per edition.

Readers Letters

Wanted:

Fridge for Memorial Hall, if you have a spare fridge that you no longer have use for the Memorial Hall Committee are looking to update their fridge. If you can help please call Ann on 251914.

FARMERS MARKET / BOOT FAIR 9:30 - 11:00

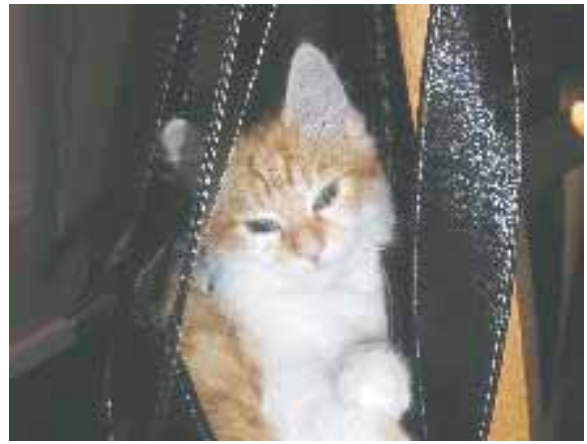
Saturday 31st July

The July farmers market has been moved to the 31st and for one month only will be accompanied by a Boot Fair on the Recreation Ground (weather allowing). There are a limited number of places available and will cost £10 per pitch. To book a pitch please call Carl on 250911. Please note we are unable to supply tables for the boot fair.

Come along and get your fresh fruit and vegetables, cakes, craft and jewellery then take a browse around the boot fair. What better way is there to spend a Saturday morning?

BACK TO SKOOL DISCO SATURDAY 25TH SEPTEMBER

The kids have gone back to school, the summer nights are fading so let your hair down and party to some of those old school anthems you used to love. In aid of the HH PTA and the HUGH Fund, we are having a disco at the Hall. Free glass of alco' punch for anyone in school uniform, tuck shop and prizes for best dressed. Disco and licensed bar from 7:00 - 11:30. Tickets £6.00 each from Carl (250911) or Wenda (253169). Old school pictures of friends/spouses wanted to be copied and stuck up on our wall of shame! School uniform optional.



Dear HHT,

We have been very impressed with the sheer number of cats lovers in High Halstow since we moved into the village eighteen months ago. We too have three cats. We have become increasingly concerned about our ginger and white hooligan, Harry, over the past few weeks as he is no longer eating at home.

A trip to the vet found nothing wrong so the only conclusion we can arrive at is that he is eating somewhere else. Harry belongs to our daughters who are becoming increasingly upset that he doesn't eat when they feed him.

Therefore we would ask that if he arrives at your house in Harrison drive or Eden Drive, shouting he hasn't been fed then he's telling fibs, so please do not feed him! He has also recently come home without his collar and name tag which is also worrying, however he is micro-chipped.

Although a hooligan, Harry is a much loved family pet and we would very much appreciate it if you don't feed him or encourage him into your house.

Many Thanks

Luci & Michael O'Sullivan
Harrison Drive

Dear HHT,

We would just like to say a big thank you to all the people from the village, who supported our local children in the production of Billy Elliott. The show was an amazing success, full of talented children and a team of dedicated adults.

Thank you.

Angela Bostock and Zena Murray

Contributions for August should be sent by 24th July to:
Carl Mitchell, 8 Marsh Crescent, High Halstow ME3 8TJ
or e.mail to editor@highhalstow.org.uk