



High Halstow TIMES

Home of the Heron



August 2013

2013 Photographic Competition



The High Halstow Photographic Competition has been running now for the past 4 years and we have had pictures submitted by young and old, complete novices and experienced photographers. All we ask is that the picture is taken within the boundaries of High Halstow.

There are no restrictions this year with regards to previous winners, and the categories are remaining the same i.e. Flora & Fauna, People & Places, 18's & Under. If you are submitting pictures of children, please supply parents permission (although large public events do not require such permission).

Prizes are awarded for 1st, 2nd and 3rd places within each category, and an overall winner is chosen. Winning pictures are used in the High Halstow Calendar and an exhibition of all the winning pictures and some of those that didn't win are shown at the October Parish Council meeting. Pictures can now be sent to photos@highhalstow.org.uk - all entries should be submitted by the 9th September 2013.

If you are a member of a group in High Halstow, why not send photos from an event you organised, i.e. Dramarama Summer Show, the Gardening Club, High Halstow Hikers etc. They would make great additions to the calendar produced at the end of the year, and you may win a prize for your efforts.

HH Parish Council

Friends of St Margaret's Church

The first project to help maintain the fabric of the Church has been agreed with the Friends of St Margaret's providing £1000 towards a repointing project as highlighted in the survey carried out on the Church. Along with a further £1000 from the Parochial Parish Church we are awaiting to see how much of the work can be carried out

Subscriptions are starting to come in and it is not too late to make a monthly donation.

Details can be found at
<http://thefriendsofstmargarets.org.uk/how-to-join>

Christmas Tree Festival

I know we are in the middle of a heatwave but a date for your diaries is the 14th December for the second Christmas Tree Festival. Details will follow in later HHT and organisations will be asked again to participate. Look forward to seeing you there.

Fly Tipping

There appears to be a spate of fly tipping occurring in the Village with a number of fridges being dumped down Britannia Road. We are grateful that Medway Council do take people to court if there is sufficient evidence of fly tipping as happened in July to someone who dumped rubbish in High Halstow. He was ordered to pay £1215 in fines and costs. Money spent either by Medway Council or the Parish Council is money that could have been spent on improving services and facilities rather than clearing up the mess fly tippers leave behind. If you see anything please contact Medway Council on 333333 or by email to customer.first@medway.gov.uk

High Halstow & District Gardening Club

Steve Weller from Kent Chilli Farm gave an interesting and entertaining talk at our July meeting. He described how he had turned his hobby of growing chillies into a business and advised of the history and uses of chillies. He showed examples of different varieties of chilli plants and provided samples of his chutneys and jams.

The outings have now been completed for this year which in July included trips to the beautiful garden at Merriments in West Sussex and concluded with a sunny day at Salutation House at Sandwich enjoying the garden and folk festival.

We look forward to seeing you all at our Annual Show on Saturday 24th August in the Recreational Hall. Non-members are very welcome to exhibit. In addition, to vegetables, fruit and flower sections there are classes for baking, preserves, flower arrangements and arts and crafts. The theme for photographs this year is 'Reflections'. We have two classes for children to exhibit, for children aged 5 to 7 years, an animal model made from fruit and/or vegetables. For age group 8 to 11, there will be a prize for the highest number of items to fit into a standard size matchbox (a numbered list of all the items should be included). Show entries are to be benched between 9.30 to 11.20. The show will be open to the public from 3.00pm with the presentation of prizes at 3.45pm. Refreshments will be available with a raffle and tombola. We hope that you will be able to join us.

Laurie Manser will be speaking to us on 10 September on 'Growing and Showing Daffodils' usual starting time of 8.00pm.

Ingrid

Allotments

As you may be aware the Parish Council have a number of allotments which are rented out each year. Although there are currently no vacant allotments, there is also no one on the waiting list. Should you wish to be put on the waiting list please can you contact me (Chris Watson) on 256529 or email me at chris.watson123@btinternet.com.

We Have Done It Again

A trip to Ryarsh and a quick win, 2 games to nil, and we are through to the next round of the Wl County darts tournament. We are always the away team this year, so our next match is in East Farleigh. We had a minibus to Greenwich last month (a very hot day) where we split up and did our own thing. Coffee of course, shopping, the Cutty Sark and the Fan Museum, and lunch together to name a few. In August we do not have a meeting, but we are going to Restoration House in Rochester for a guided tour followed by afternoon tea.

We meet next on 4th September, all visitors are very welcome.

Margaret Whitebread

Lord Fosters Estuary Airport Proposal

The Foster plan for a new hub airport on Grain has been formally submitted to the Airports Commission. For further details please visit www.highhalstow.org.uk/

In today's climate of austerity the focus is and has to be on jobs and the economy.. We must not however lose sight of the big picture Our future!!

The Thames Estuary and Marshes are protected by international law, sweeping that protection aside to build a new hub airport would be an act of unprecedented environmental vandalism that would send a message to third world countries that destroying our environment is of no consequence!!

Join with the RSPB in sending government a clear message that we must "GIVE NATURE A HOME.. By saying NO to estuary airport".

LOCAL ELECTRICIAN

Domestic + Commercial + Industrial
NAPIT PART P APPROVED ELECTRICIAN

Steve Waldie

Full & Part Rewires - Consumer unit changes - internal power sockets & lighting - External power & lighting - Bathroom fans - Testing & inspection - Alarm Systems

No Job Too Small - No Call Out Charge

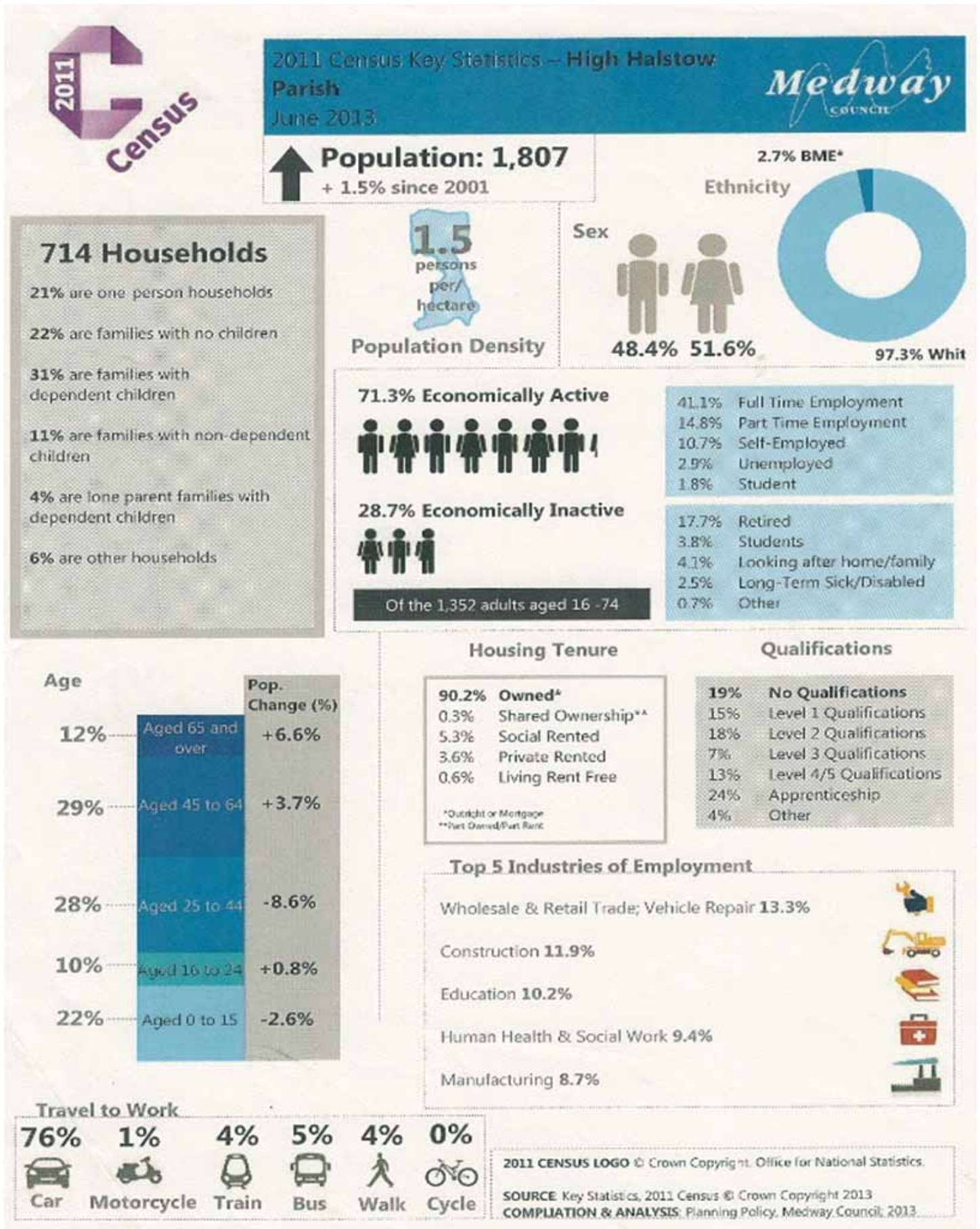
All work fully insured and guaranteed



Tel 01634 253169 Mob 07833 251805

2011 Census

Many of you provided information for the 2011 Census and below is a brief summary of the findings. For more detailed information please visit <http://www.medway.gov.uk/environmentandplanning/developmentplan/factsandfigures.aspx>



Medway Parent and Carers Forum – Information Event

Following a very successful previous event, Medway Parent and Carers Forum are holding an Information Event for parent/carers and family members with children and young people with any type of disability, from birth to 25 who live across Medway. There will be fun and creative activities to keep your young people occupied whilst we talk to you about your issues and concerns and parents can find out more information about things that may help them in their day to day lives in supporting young people and families affected by disability.

The event is being held on Saturday 14th September at The Pilkington Building, University of Greenwich, Central Avenue, Chatham Maritime, ME4 4TB and runs from 10am to 3pm.

Admission is free and there will be information about Direct Payments and Personal Budgets, activities, support groups, fire and police services, adapted bicycles and there will be an opportunity for parent/carers to join discussion groups on the Local Offer and Short Breaks.

There will also be refreshments available.

Please note that parent/carers will be responsible for their children whilst at the event.

To find out more visit our website www.medwaypcf.org.uk or e-mail: medwaypcf@googlemail.com.

Kings Kitchen

A Coffee and Cake Café
for the Whole Village.

Open 10.00am - 1.00pm
every Tuesday
in the Memorial Hall.

Why not come in and enjoy a cuppa
and a chat.

A warm welcome awaits you.



**VINYASA YOGA IN HIGH HALSTOW –
5.30pm – EVERY WEDNESDAY**

Memorial Hall, beginners and intermediate very welcome. £5, no need to prebook. Please come along in your comfortable loose clothing and enjoy an hour just for you, mats and equipment provided.

Often starting with a joint warm up and then on to Sun Salutations (a sequence of set poses which flow from one to the next and are repeated), moving on to standing poses, hip openers, and balance. Then introducing core work and back strengthening, followed by seated poses and hamstring stretches before relaxation.

The word Vinyasa means breath-synchronized movement. So do expect movement, not just stretching. The class is energetic and dynamic and is also alignment orientated with each asana or posture being completed with an inhale or exhale. Given this, it is more fitness based and can be handy with weight loss.

Vinyasa brings a sense of calm, revitalising the body and mind with graceful movement and powerful postures, building strength, flexibility and increased energy levels.

Dog Owners

We all know that dogs bark - nothing we can do about that, but please, if shutting your dog out in the garden, be mindful of people that live around you and that they may either work night-shift or like to enjoy the peacefulness of their own garden. A barking dog can be a real irritation at anytime of the day, it may be worth checking with your neighbour if your dog is howling whilst you are away or if he sits patiently waiting for your return. Please be considerate to those around you.

High Halstow Parish Council

High Halstow Relief in Need Charity

This charity exists to assist those in the Village who are in need, especially widows and widowers. The trustees wish to remind the people of the parish that they will give consideration to any request for a particular need, at any time during the year. If you, or an elderly relative would feel safer at home with a telephone 'Lifeline' the Charity could help with this. All requests are dealt with in complete confidence and there is no need to wait for the October form.

The trustees are:

- Rev. S. Gwilt - The Rectory
- Mrs L. Munday - 22 Willowbank Drive
- Mr S. Bailey - 27 Cooling Road
- Mrs J. Gillies - 22 Leaman Close
- Mr J. Myatt - Decoy Hill Road
- Mrs C. Peek - 2 Willowbank Drive
- Mrs J. Collins - 6 Marsh Crescent

High Halstow Charity Fun Day

21st September 2013

We are planning to hold a 'Mad Hatters Tea Party' for the children on the 21st September. Details are yet to be finalised but we are planning to hold the tea party in the newly refurbished village hall. Tickets will go on sale before the event and will need to be purchased from the Village Shop.

We will be laying on entertainment during the party and will supply plenty of sandwiches, cakes, crisps, biscuits and soft drinks. The tickets will be £2.00 per child and there will be limited availability - please keep an eye out at the village shop, village notice boards and the website for when they go on sale.



The Village Shop

Opening Hours

Monday – Saturday 7am – 8pm

Sunday 8am – 2pm

Telephone number: 01634 254561

Village Hall Refurbishment – Phase Two

This is the second update since the builders; B W May arrived on site.

Works to the roof well under way and the new brickwork to the front is finished. Electricians have been in and working on the wiring that is required. Changes have been made at the last minute to accommodate additional requirements for both the Doctors and Building Control which will delay completion by a couple of weeks.

Ray Collins has been very instrumental in liaising with the Builders, the NHS and our Architects, Clay Architecture Ltd, to ensure issues are raised as quickly as possible and resolved so that any delay is kept to a minimum. Ray has also got the working party ready and primed to go in for the painting that we will need to do before the finishing touches are carried out. The paint and gear has been ordered and by carrying out so much of the work ourselves this has saved thousands from the budget and the Hall Committee are extremely grateful for all volunteers time and efforts. It really is appreciated.

Remember you can see the plans at <http://highhalstow.org.uk/halls/village-hall-plans>

This work has only been possible with major funding gratefully received from the following

Veolia Environmental Trust
Kent Downs and Marshes Leader Programme (RDPE)
High Halstow Parish Council
Garfield Weston Foundation

Photos can be viewed at <http://highhalstow.org.uk/halls/village-hall-refurshment-update-on-phase-two-july-2013>



Nightingales at Lodge Hill

RSPB has been given a preview of a report, which re-enforces evidence that the proposed development site at Lodge Hill is nationally important for nightingales. The draft report is prepared by the British Trust for Ornithology (BTO) who have counted the number of nightingales at Lodge Hill during the 2013 breeding season. This report shows that there were 65 singing male nightingales detected between late April and early June of this year. The figures re-enforce the evidence that the Chattenden Woods and Lodge Hill SSSI (much of which covers the proposed development site at Lodge Hill) is nationally important for nightingales, holding at least 1% of the UK nightingale population. Medway Council has been fighting against the notification of the site as a Site of Special Scientific Interest. The Council is seeking the redevelopment of the former military training site for 5,000 houses; but last week, an independent Planning Inspector wrote to the Council to tell them that the policy, which earmarked Lodge Hill for development, is not consistent with national policy and that the "only reasonable course of action" is for the Council to now withdraw its plan. Samantha Dawes, RSPB Conservation Manager for South East England, said: "The RSPB now calls on Medway Council to stop opposing the notification of the Chattenden Woods and Lodge Hill SSSI. It is clear that this site is nationally important for nightingales. The Council also need to listen to the Planning Inspector and withdraw the Medway Core Strategy. The Inspector has said that the plans are inconsistent with the rules, which apply to every planning authority in England. Continuing to push for the development of the site is wasting time and taxpayers' money. The Council need to come up with a new plan which will provide homes and jobs for the people of the Medway, whilst protecting the environment for those people and for future generations". Whilst the figure of 65 singing males represents a decrease on the number of nightingales detected in 2012 (85), the smaller number of birds this year may well be a result of the poor breeding season in 2012, possibly caused by the unusually cold and wet spring. The figure still represents around 1% of the UK nightingale population, which is a key indication of the site's national importance, and the site remains one of the most important places in the country for nightingales.

Rolf Williams, RSPB

High Halstow Hikers

The Hikers' July walk was a local one from the church in Upper Stoke. About 15 of us made our way from there across public footpaths that, in the main do not appear to be well used, to Shakespeare Farm Road looking out across the marshes to the Thames; then along to Coombe Farm and to Moat Farm and Hall Farm in St Mary's Hoo. The path between Coombe and Moat Farms runs between 2 overhanging hedges making a long tunnel-like structure. A thank you to those that had recently cleared this to make the walking easy and attractive - otherwise it can be a very difficult route. Our way back to Stoke through the orchards was made "interesting" by the absence of an anticipated ditch crossing. Fortunately said ditch was dry and a path was cleared for all to cross with little problem. The day was one of the first of our hot spell so drinks in the White Horse close to our starting point were exceptionally welcome.

Our August walk will be a bit further afield starting at 10.00 on Sunday 11th August from the car park at the Quay in the centre of Sandwich (postcode: CT13 9EF). The walk will go along a short stretch of the Stour and cross Royal St Georges golf links where the Open championship was played 2 years ago. We will then walk along the seawall towards Deal with great views along the coast in both directions and if clear across to France. The route is very flat and generally dry and on good paths. Any questions please contact Mitchell on mitch.dowsett@btopenworld.com or 01634254428.

Project 90

The main task carried out last month was the clearance of the last vacant allotment plot which is now to be tendered. In addition rubbish that had been dumped in the trees near the toilet block was also cleared.

There will be no Project 90 in August so see you again in September.

Parish Council

High Halstow Open

The Village Hall Committee would like to thank the many sponsors, donations, Deangate Golf course and of course the competitors who turned out for the first High Halstow Open. Glorious weather greeted the competitors and the competition was close. Just under £225 was raised which will be going towards the painting of the hall once the builders finish Phase Two.



Winners as follows:

- 1st prize Anthony Coxedge
- 2nd prize Peter Barclay
- 3rd Prize John Crisp

Nearest the Pin John Crisp
Longest Drive Dave Dodd
Booby Prize Wes Hollands

Team Prize:

Peter Barclay, Dave Dodd
Len Gordon, Dave Williams



Plans are underway for next year so watch this space. More pictures available on the High Halstow website (www.highhalstow.org.uk).



Off to University ?

The High Halstow Relief in need charity has a limited number of small bursaries available to students going to University for the first time in the academic year 2013-2014. Previous bursary recipients in their 2nd or 3rd year may also apply for further assistance.

The scheme is available only to students living in the parish of High Halstow at the time of application. Closing date is 2nd September 2013, and applications received after that date will not be considered. In your letter of application please state your name, address, telephone number, the universities you have applied for and the length of your course. Proof of acceptance on your course will be needed before the bursary can be given. No appeal is available for unsuccessful applicants. Please apply in writing to, The Clerk, High Halstow Relief in Need Charity, 10 Drayton Close, High Halstow, Rochester, ME3 8DW.

High Halstow Charity Fun Day – 21st September 2013

With the help of many of the village's clubs and organisations, the little seed of an idea to raise money for JDRF through a one day cricket competition has developed into the major event that you have read and heard about in recent weeks. You will see and hear a lot more in the build up to 21st September, when we hope that everyone will come out to enjoy themselves throughout the day, in addition to supporting local groups and the main charity.

HIGH HALSTOW FUN DAY
CHARITY

Fundraising in aid of

RAISING MONEY FOR
JDRF IMPROVING LIVES. CURING TYPE 1 DIABETES.
All net proceeds donated to JDRF reg no: 295716 and SCO40123

21st September

Noon 'til Late (Cricket from 10:00am)
Prize winning opportunities throughout the day
Six-a-side Cricket Tournament

GRAND DRAW
(Prizes include):

- o Meal for 4 at Shoxna Restaurant (Up to £150)
- o £500 Cash;
- o Fortnum & Mason Hamper;
- o iPod/Mini;
- o Many more.

Other Events on the Day:

- Evening Auction (Items include):
 - o Fourball Golf Day at Bearwood Lakes;
 - o Threeball Golf Day at London Golf Club;
 - o Cricket Bat signed by Australian Test Team.
- Children's Games;
- "Mad Matters" Tea Party;
- Stalls, Activities & Face Painting;
- Bouncy Castle & Carousel;
- Bar & BBQ; and
- Live Music.

Shoxna
Indian and Bangladeshi Cuisine

JDRF - Registered Charity Number: 295716 (England and Wales) and SCO40123 (Scotland) For full details: www.highhalstow.org.uk

Apart from the Grand Draw, tickets for which will be available shortly from various outlets in the community, one of the highlights will be an auction of sports related items which will be held at the cricket pavilion between the end of the cricket and the start of the evening entertainment. Lots already to hand include a golf day for four at the prestigious Bearwood Club in Berkshire, and a similar event at the London Club. Players need to have a handicap of 24 or better. Opportunities to play on these championship courses do not arise very often, so we are expecting a high level of interest. There will be a wide range of lots with a range of values. One of the joys of an auction is that anyone can pick up a bargain, in the knowledge that, in this instance, every penny of the money will be going to JDRF. Full details of the lots will be available in advance of the auction.

Anyone requiring a supply of tickets for the Draw to sell within their own circle of connections, please contact me at 9, Marsh Crescent or on 250334.

David Lapthorn

Come and Meet Your Parish Councillors

Chris Watson and Gary Jerreat, two of your Parish Councillors will be at Kings Kitchen in the Memorial Hall on: Tuesday 13th August from 10.30 – 12.00pm and every 2nd Tuesday in the month.

Come and tell us your problems or find out about projects we are undertaking. If we can't answer your questions there and then we will get back to you.

High Halstow Parish Council

High Halstow Cookery Book

Dear Mums, Dads, Cooks, Chefs, anyone who cooks! We have only received a few recipes for the second edition of the village recipe book. There is still time to get your entries in, and share your culinary expertise, or not as the case may be! Entries from all age groups are welcome, young and old, maybe a wartime recipe which has been passed down or a nouveau cuisine concoction to blow us all away. I look forward to receiving your entries, if you prefer to leave the photo of yourself out then that's fine! Please send to: Jeanette.dowsett@btopenworld.com



Parking on Kerbs

Complaints have been received by the Parish Council on the number of cars parked on the kerb, which is causing issues for pedestrians. Medway Council is aware of the issue on the peninsula as a whole and are considering random patrols of the smart car to issue tickets. We would prefer no penalties are issued so the Parish Council is asking people to park properly in order to avoid the issues.

Vegetation

The Parish Council is asking people who have shrubs/trees overhanging on to public walkways if they would mind cutting back in order for people to walk unhindered. Thank you for your cooperation.

Thefts from Sheds and Outhouses

Please be aware that thefts from sheds and outhouses have been reported recently on the peninsula and the Parish Council have been asked to remind people to lock up securely to make it more difficult for would be thieves.

HH Parish Council

High Halstow Cricket Club – July 2013

The poor results of the two Saturday teams have continued, although there have been some good individual performances, notably Chris Lally's 122 for the 2nd XI against Rodmersham. The big downfall has been the lack of penetration with the ball on the good pitches that this summer's weather has given us. The Sunday XI has fared better, winning four of their last six games. We hope that some of this better form crosses over to Saturday performances.

As reported last month, the stars in the firmament are the U11s and U13s. The U11s won their division of the Medway Youth Cricket League and then beat Rainham in the final of the MYCL Cup. In that game, wickets came from Archie Lally and Joshua Regan, whilst Harvey White and Clarke Dockwray saw the "Heron" home with the bat. The U13s also won their division, progressing to the play-offs where the East and West divisions come together. Here, they progressed to the final, where the only defeat of the season was suffered at the hands of Borstal. A week earlier the U13s had joined their younger counterparts at The Mote, Maidstone for their age group Cup Final in which they beat Borstal by 10 runs. Congratulations go to all those who played, the coaches and supporters – particularly those who ferried the teams to games and helped with refreshments.

The U15s made no progress in their cup competition, however they won MYCL U15 (West) and progressed to the playoffs, where they lost to Old Williamsons.

We have a very successful record at colts level in recent years, and long may it continue. Consistency on the field at this age provides a firm foundation for the future of the individuals and the Club as a whole.

Many of the colts will be "on duty", in their cricket whites, for the Charity Fun Day on 21st September, providing help and assistance to all. It is a day we all look forward to with enthusiasm, and hope the Cricket 6's competition will be the first of what becomes an annual event.

David Lapthorn
Life President

Dramarama Late Summer Show

Due to the refurbishment of the hall the postponed summer show will now be on Thursday 12th, Friday 13th and Saturday 14th September 2013. This years' show will feature extracts' from the musical Cats, a condensed Chitty Chitty Bang Bang, and lots of comedy sketches, songs and dances, ticket details will be available in next months HHT, but please reserve the date.



Afternoon Tea in Memory of Grace Milner

Grace Milner sadly passed away recently. Grace was a supporter of village activities such as the Farmers Market and all charity fundraising for the Memorial Hall, especially the Macmillan Coffee morning, and had lived in High Halstow for most of her 93 years. Grace's family were sorry not to be able to spend time with her village friends who attended her funeral, so would like to take this opportunity to invite them and anyone else who knew Grace to join them for afternoon tea in the Memorial Hall on Sunday 18th August at 3 pm. If you have any photographs including Grace please bring them along.

Need to Hire a Hall

If you are interested in hiring either of the halls in the village for a party, function or meeting please contact:

Memorial Hall - Angela Forward 251756

Village Hall - Crystal Wakefield 251849

Please do not call on a Sunday.

HIGH HALSTOW & DISTRICT GARDEN CLUB

ANNUAL SHOW

SATURDAY 24 AUGUST

RECREATION HALL

HIGH HALSTOW

VEGETABLES, FLOWERS,
DOMESTIC, ARTS & CRAFTS, ETC

OPEN TO MEMBERS AND NON
MEMBERS

BENCHING OF EXHIBITS 9.30 TO 11.20 AM

OPEN TO PUBLIC 3.00 PM

REFRESHMENTS RAFFLE TOMBOLA

FULL SHOW SCHEDULE FROM SHOW
SECRETARIES 01634 221579

The Friendly Club

High Halstow has it's own monthly club for men and women aged 40 and over. We meet on the 4th Wednesday in the Memorial Hall at 2pm until 4pm. There is a small annual membership fee and then just 50p when you attend a meeting. Meetings vary with a speaker, entertainment or activity and very often outings, by minibus. The most recent being last month to Hastings. If you are interested and want to know more, please contact me on 250677.

Margaret Whitebread

Share your Thoughts, Ideas and Comments.

Do you have a story about the history of the Village, did you go to or know anything about the old school, can you tell us a story about a picture in the Memorial Hall? Would you like to promote an event or club within the village. Is there something concerning High Halstow that you would like to share with everyone. Then please write to the editor (address as shown on the back page) or e.mail your article/letter and we will share your thoughts with the village/world.



Jonathan Computers

Contact Jonathan directly on the Office No: 01474 879878 or
Freephone: 0800 321 38 79 Mobile No: 07905 120 557
 Web: www.jonathancomputers.co.uk Email: sales@jonathancomputers.co.uk
Based in High Halstow so will be quick to respond



Computer problems solved quickly and cheaply...with a friendly face
And Best of all I come to YOU!!!!

- | | |
|---|--|
| <input type="radio"/> Dramatically Speed up Slow PC's | <input type="radio"/> Virus & Malware Removal |
| <input type="radio"/> Fix Broadband connection issues | <input type="radio"/> Data Transfer & Recovery |
| <input type="radio"/> Upgrade your PC to Windows 8 | <input type="radio"/> NO 'Call Out' Charge |
| <input type="radio"/> Make Win 8 Look like XP, Vista or 7 | <input type="radio"/> Reconditioned Pc's & Laptops |

Do you want some training on using a computer?

- | | |
|---|--|
| <input type="checkbox"/> I Can offer help with One-To-One Training, Beginners to Advanced | <input type="checkbox"/> Set Up Skype Accounts |
| <input type="checkbox"/> Set Up your Existing Emails Or create New Ones for you | <input type="checkbox"/> Set Up the internet on New PC's |
| <input type="checkbox"/> Set Up New Pc's & Laptops (Even if purchased from elsewhere!) | <input type="checkbox"/> Learn eBay, Amazon Etc. |

**I Am Based In
High Halstow
So Can Be Quick
To Respond**

I will deal with you personally so I can provide you with the best service. I offer a fast and friendly service and explain any problems about your computer to you in an easy to understand way.

*Regards
Jonathan*



Rochester Roofing

- New Roofs & Repairs
- Tiling
- Lead Work
- Chimneys

Free quotations, friendly & reliable, fully insured

Call Paul on:
01634 326192 07903 581926
paul@rochester-roofing.co.uk
www.rochester-roofing.co.uk

HANDY ANT Property Maintenance

Interior & Exterior ~ Domestic & Commercial
 I am a skilled tradesman who lives in High Halstow and has learned many skills in my 29 year career. I am a clean and conscientious worker who respects other people's property. Some of my skills are listed below.

Electrics ~ Washing machines ~ Dish washers
 Roofing ~ Tiling ~ Carpentry ~ Facia and Soffits
 Flat pack furniture ~ Wood flooring ~ Gutters
 Curtain tracks/poles ~ Painting & Decorating ~ Drains
 Flat screen TV's ~ Plastering ~ Plumbing ~ Fencing
 Bathroom re-fits ~ Kitchen re-fits ~ Landscaping
 Insurance work undertaken
 Please contact me if the work you require is not listed or for free friendly advice
 Quotes available via phone or email for small jobs
 Hourly rate basis is £35.00 first hour
 Then £20 per hour thereafter
 Daily rates available on request
 References available
 No job too small

Mobile: **07947706106** Home: **01634 252430**
asrutherford@btinternet.com
ANTHONY RUTHERFORD
 5 LEAMAN CLOSE, HIGH HALSTOW, ME3 8EZ

PAUL HUGHES Double Glazing Repairs

NO CALL OUT CHARGE FREE ESTIMATES

- Misted Units Replaced
- Cracked Units Replaced
- Broken Hinges
- Cat Flaps Fitted
- Locks Repaired
- Damaged Handles
- Doors Re-Adjusted
- Windows Fitted



**M: 07815 948637
H: 01634 256631**



High Halstow Pre-school

Modular Building, Primary School, Harrison Drive,
 High Halstow, Rochester, Kent. ME3 8TF
 01634 255088

Proprietor/Manager Mrs Anita Russell BA (Hons), EYPS

- ✓ 'Outstanding Provider' Ofsted
 - ✓ 2009-10 Extensive Outdoor Facilities
 - ✓ Excellent Links with Primary School
 - ✓ Friendly, Qualified Staff
 - ✓ Affordable Childcare
- Open Weekdays, term time only
 8.45 am - 3.30pm

Morning, lunch, afternoon and all day sessions available.

Children are funded for 5 free sessions the term following their third birthday.

Don't take Ofsted's word that we are an outstanding provider, come and see for yourself.

Ring 01634 255088



**AGE 16-25 Years
Bored ?**

We can help. Medway Council is looking to provide you with the chance to get active, get involved and try something new. Whatever you want to do, any sport, you tell us!

All you have to do is email medwaysport@medway.gov.uk with what sports activities you would like to try in High Halstow. Along with your name, age and email address and then if enough people are interested we will try and put on a six week course for everyone to try.

Dont be bored, be active!



Medway Sporting Legacy
Play - Compete - Spectate



Medway
Serving You



L.W.P.T. PLUMBING AND HEATING

*Domestic and Commercial
Gas or Oil*

*Boiler Replacement, System Upgrades,
Fires, Cookers and Hobs
Landlords Gas Safety Checks*

Based in High Halstow

Tel: 07501 089323

leetrott@btinternet.com



Toddler Group

Come and join us for a cake & a coffee while the toddlers play!

A great way for Mums & Kids to make new friends.

Babies to 4 year olds, just £1 for two hours of play.

Every Thursday, 9am to 11am at the Memorial Hall, High Halstow.

Your first session is FREE!

For more details, call Natacha on 254178

HH Village Website

Please visit the Parish Council website for everything about our village. You can see the minutes of your Parish Council or look up local groups in the village, past copies of the High Halstow Times, and pictures of recent events. Please note that there is now an RSS feed on the Parish Website where you can get automatic updates when the site is updated. Please visit www.highhalstow.org.uk and follow the instructions on the right hand side.

Local Groups and the Website

You can advertise your activities free of charge on this site just let us have the details. If your details need updating with either dates or details of events please let us know by emailing gary@highhalstow.org.uk. This can be used to keep your members informed and possibly attract new members to your group.

Local Businesses

The Parish Council is pleased to announce that the Business Page is back on the website. Should you wish to advertise your business please visit <http://highhalstow.org.uk/business-page> where you can find all the details of how to put your business on the site.

BOB GEE DECORATOR

Interior / Exterior Decorator

**Approved Contractor
Public Liability Cover**



**Clean, Tidy, Professional Work
20 Years Experience**

No Job Too Small

Speed Limits

Please can I remind people to observe the speed limits through the Village. We should all be mindful that High Halstow is a nice place to live where children, older residents and walkers should feel safe. Some may not be as aware of the traffic as they might otherwise be. Please be careful.

George Crozer, HH Parish Council

Dates for Diary

Every Tuesday:

King's Kitchen

10:00

Memorial Hall

Bell Ringers

19:30

St Margaret's Church

Every Wednesday:

Tai Chi

10:30

Memorial Hall

Yoga

17:30

Memorial Hall

Every Thursday:

Mother and Toddler's

09.00

Memorial Hall

Sugar Babes

19.00

Memorial Hall

Every Friday:

Pilates with Joy

14:15

Memorial Hall

Every Saturday:

Karmann Dancers

09.00

Memorial Hall

Other Dates:

Sunday 4th:

09:00

Family Service

St. Margaret's Church

Sunday 11th:

High Halstow Hikers

Details in HHT

Sunday 18th:

09:00

Family Service

St. Margaret's Church

Sunday 18th:

15:00

Grace Milner

Remembrance Tea

Memorial Hall

September 12th/13th/14th

Dramarama
Summer Show

September 21st:

High Halstow Charity
Fun Day

September 27th:

09:30 Onwards

Macmillan Coffee
Morning
Memorial Hall

December 14th:

Christmas Tree Festival
Village Hall


Local groups, please let us know the dates of your meetings/events for the coming year so we can include them in the HHT and on the website.

Learn GUITAR

Professional guitarist and guitar teacher offers 1 to 1 tuition. All ages and abilities welcome. Graduate of London Guitar Institute and playing experience includes The Who and Robbie Williams. Can inc practical, grades & theory.

CHRISTMAS VOUCHERS AND DEALS AVAILABLE
HOME VISITS OR AT HOME STUDIO IN CHRISTMAS LANE

Call Matthew 07967 125091



GUITAR LESSONS
07967 125091

GUITAR LESSONS
07967 125091

GUITAR LESSONS
07967 125091

GUITAR LESSONS
07967 125091

GUITAR LESSONS
07967 125091

GUITAR LESSONS
07967 125091

GUITAR LESSONS
07967 125091

GUITAR LESSONS
07967 125091

GUITAR LESSONS
07967 125091

GUITAR LESSONS
07967 125091

Divine Party Cakes

Cupcakes, large cakes & cupcake
decorating parties

www.divinepartycakes.com

Find Divine Party Cakes on Facebook!

e-mail: info@divinepartycakes.com

Sadie 01233 501832
Sophie 01634 254175



Your Parish Councillors

George Crozer, Chair	01634 250286
e.mail: george@highhalstow.org.uk	
Gary Thomas, Vice Chair	01634 252812
e.mail: gary@highhalstow.org.uk	
Martin Andrews	07984 791029
Ray Collins	01634 250105
Stuart Bailey	01634 255537
Josh Gordon	07753 212179
Gary Jerreat	01634 253999
Lesley Munday	01634 250276
Christine Watson	01634 256529

Your councillors may also be contacted through the Parish Clerk:

Mrs Roxana Brammer 01474 871269

Note from the Editor

The High Halstow Times is a friendly point of contact and all views expressed are those of the individual. No letter will be published without the name and address of the writer being supplied to the editor, which will be published alongside the letter. If you have a matter for complaint, it should be brought to the attention of the Parish Council, which meets on the second Wednesday of every month, at 8pm in the Memorial Hall. Members of the public are always welcome.

Disclaimer Please note High Halstow Parish Council: 1. makes no endorsement of any of the businesses listed in the High Halstow Times 2. is not responsible for the content of external websites. 3. the information is offered 'as is' with the wish to be helpful.

Advertising rates are £15 per quarter page per edition; £30 per half page per edition. Items should be sent to editor@highhalstow.org.uk

Sunday Services

8:00am High Halstow

Holy Communion BCP

9:30am High Halstow

1st and 3rd Sundays All age worship

2nd and 5th Sundays morning prayer

4th Sunday Family Communion

6:30pm High Halstow

1st Sunday Holy Communion

2nd and 3rd Sundays Evening prayer BCP

4th Sunday Informal worship

5th Sunday Songs of Praise

Baptisms by arrangement

1st or 3rd Sunday of each month at 9:30am

For further information. Rev Stephen Gwilt 01634 250637

Or Email stephengwilt2@hotmail.co.uk

Caring for the needs of the community for over 1000 years

Let us not give up meeting together, as some are in the habit of doing, but let us encourage one another - and all the more as you see the day of judgment approaching. Heb 10:25

Body Wellness Tai Chi Classes

Qualified and experienced instructor



Tai Chi helps to alleviate the symptoms of: arthritis, osteoporosis, rheumatism and Parkinson's.

It also helps with blood sugar control and to reduce high blood pressure. Decreases joint pain and stress. Assists with; strength, balance and a general sense of wellbeing.

Wednesdays 10.30-11.30am in the Small War Memorial Hall, High Halstow

For further information or to express an interest, please contact;

Mr B J Rance 01634 840 766 or 07876064777

Body Wellness Tai Chi is a well-established class that has been running since September 2012 with a dozen regular members so far. Members enjoy benefits such as improved breathing, flexibility and movement in friendly and familiar surroundings. It provides gentle but highly effective exercise for local residents in a convenient location. The instructor, Mr B.J. Rance, has been involved in martial arts and tai-chi for over 50 years. He has constructed a programme that suits the needs of his members and the club boasts a friendly and supportive atmosphere. It is a place to make friends with new people as well as see familiar faces. Mr Rance's class brings a specialist skill to our local population adding a new and interesting activity to the services already available in the village.

All Age Service

**For young & old and
everyone in between !**

**Cartoons, video's, stories, action songs,
Quizzes and a whole lot of fun**

First and third Sunday of the month

9:30am at High Halstow & 11:00am at Allhallows

For more info contact Rev Stephen Gwilt on 01634 250637

Invitation to participate in a discussion about later life in rural England.

Residents of the Hoo Peninsula are invited to attend a presentation and discussion about the challenges that older people face living in a rural community.

Join us to share your experiences of rural life and put forward suggestions about how the situation could be improved.

Age UK wants to see a balance between Government and Community action. This is why we have invited our local MP Mark Reckless to attend the event to hear our concerns.

Before the event, please can you prepare by thinking about the following questions:

- What are the biggest challenges that older people living in your area face?*
- What are your personal experiences?*
- How can this situation be improved?*

Your voice will support our call for all levels of government to take steps to make the whole of England a place where older people can thrive.

I very much hope you will be able to participate, if you would like to attend please could you respond to Karen at Age UK Medway, The Mackenney Centre, Woodlands Road, Gillingham, ME7 2BX by the 15th August 2013 or call me on 01634 578085 or 01634 572616.

At: Lower Stoke Village Hall, Mallard Way, Lower Stoke, Rochester, ME3 9ST.

At: 11:00am 23rd August 2013

Lunch Provided

Transport bursary available if required.



Take a snooze on the wild side... ... join in the RSPB's Big Wild Sleepout
www.rspb.org.uk/sleepout

On 9-11 August, we're encouraging people to spend a night in nature's home. From building your own dens and midnight feasts to torch light safaris and bug hunting, we've got lots of ideas and activities to help people enjoy their sleepout. We're asking people to fundraise for the UK's wildlife, as part of our giving nature a home www.rspb.org.uk/homes campaign, by getting their sleepouts sponsored.

Don't have a garden, but still want to take part? Then join us at one of our Big Wild Sleepout events. With special night-time activities from food and stories around the campfire to a night time stroll, this is the ultimate summer sleepout experience. So grab your friends and family and make a day (and night!) of it.

Save the Date
MACMILLAN COFFEE MORNING
27TH September 2013
9:30 Onwards

Nearly everyone knows someone who needs, or has needed help and support from 'Macmillan Cancer Care', and this is why I and my group of helpers over the last 9 years have (with your help) raised £4156, which has been gratefully received by Macmillan from High Halstow.

Last year you raised over £800 and our hope is that this year we can do similar and break through the £5000 overall target.

2004	£330.70
2005	£400.00
2006	£355.00
2007	£474.00
2008	£152.00
2009	£206.00
2010	£608.00
2011	£787.00
2012	£843.30
Total	£4156.00

Please come and join us in the Memorial Hall, where you can enjoy Tea, Coffee, Cake, Scones and beautiful cupcakes, all homemade. Also Jams, Marmalades, Bespoke Cards, Jewellery and a Raffle - not forgetting our 'Pick-a-Duck' tombola. A cushion corner and a name the Teddy (he really is beautiful).

If you are unable to join us but would like to donate we can arrange a delivery of a box of cakes to your door for £5. I'll remind you again in the September High Halstow Times with the telephone number for orders.

We look forward to seeing you on the 27th September.

Ann Smith



Wildlife and Countryside Fair

A family fun open farm day: nature trails, birdwatching, bug sweeping, ditch dipping, pony rides, cows, sheep, solar astronomy, inflatable planetarium*, chef demos, stalls, kid's games, arts & crafts, food, drink, live folk music!

Sunday 8th September 11am to 5pm FREE
RSPB Northward Hill, Cooling, ME3 8DS
Donations in aid of the RSPB
rspb.org.uk/reserves

*Book on the day, please arrive at 11am.

Helping to give nature a home

High Halstow Charity Fun Day

in aid of **JDRF** EXPERIMENTAL
LIVES
CURE
TYPE 1
DIABETES

Saturday 21st September 2013

*An extravaganza to equal last
year's Jubilee Celebrations*

Mad Hatter's Tea Party for Children

Stalls / Barbecue / Cricket / Prizes

Live Music / Licensed Bar / Hat Parade

Childrens' Games / Dancing / Competitions

and much much more.....

*Put the date in the diary and watch out
for further details in next month's HHT.*

Next edition September 2013; Contributions for September should be sent
by 24th August to:

Carl Mitchell, 8 Marsh Crescent, High Halstow ME3 8TJ
or e.mail to editor@highhalstow.org.uk