



# High Halstow TIMES

Home of the Heron



---

August 2016

---

## *Save the Date*

This years Macmillan coffee morning will be on Friday 30th September. As in previous years Ann Smith and her band of willing helpers will be hosting a coffee morning in the Memorial Hall, with tea, coffee, cakes, buns, biscuits and a Ploughmans lunch. There will also be much more on offer for this very worthwhile charity. Please try and keep the date free. More details in next months HHT.

WE ARE  
MACMILLAN-  
CANCER SUPPORT



## *Annual Show & Sussex Trip*

We were enlightened on the varied and historic story of Grain foreshore by Michael Dale at our July meeting. Michael gave us an enjoyable talk which was illustrated with multiple photos.

The weather was kind to us for the Cream Tea where we enjoyed excellent food and good company. Marj Ives worked very hard to organise this successful afternoon.

There are still a few places on our trip on 13<sup>th</sup> August to Batemans in Sussex.

Arrangements are in hand for our Annual Show on Saturday 27<sup>th</sup> August. There will be sections for vegetables, fruit, flowers and pot plants together with sections for Domestic (baking), Floral Art and Arts & Crafts. As this is the Year of the Garden, we have adopted this theme for the Floral Art exhibits, eg 'In an English Country Garden'. The theme of the photograph class is 'Glory of the Garden'.

Exhibitors can bring their items to be judged to the Recreation Hall between 9.30am and 11.20am. Following judging, the show will be open to the public from 3.00pm. If you would like a copy of the schedule giving details of the individual classes, please contact the Show Secretaries on 01634 221579 or [hhdgc@outlook.com](mailto:hhdgc@outlook.com).

## *The Big Friendly Read*

If you're looking for something fun and **free** to keep the kids occupied during the summer holidays, the Summer Reading Challenge is just the thing.

The challenge is for four to 12-year-olds, and is available in all 16 libraries in Medway. The theme for summer 2016 will be The Big Friendly Read, based on the work of Roald Dahl.

Children are encouraged to borrow and read six library books, of their choice, during the summer break. After reading each book they receive a reward, finishing after the sixth book with a medal and personalised Big Friendly Read certificate.

This year's challenge will run from Saturday, 16 July to Saturday, 17 September 2016.

To celebrate this year's theme, Medway's Libraries will be hosting a wide range of events throughout the summer.

To sign up, visit your local Medway library..

### **Teen reading challenge**

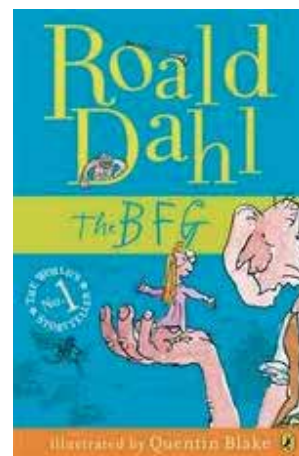
There is also a reading challenge for 13 to 16-year-olds where they have a chance to win a Kindle Fire tablet, a year's gym membership and new books. Winners will be drawn at random from all those who complete the challenge. Sign up in your local library.

### **More from Medway Libraries, this summer**

If you would like more information about the Summer Reading Challenge or Bookstart Bear Club, for younger readers, or would like to speak to a Community Librarian please phone 01634 337799

### **Volunteering**

If you are aged 14 to 16, have a few hours to spare in the summer holidays and love reading, you can become a Summer Reading Challenge volunteer.



### ***"Seated Exercises"***

**Thursday Morning 11:30am - 12:15pm**

**£4 per session**

*This class is all about upper and lower body movement. If you have a problem with balance, are an older adult or are in rehabilitation then this is the class for you. All the exercises are completed using a chair in a relaxed and fun atmosphere. Equipment such as light weights, resistance bands and foam balls are used to move to music.*

*Come and join us...No Lycra Necessary!!!*

*Phone Wendy (255366) or  
Ann (251914) for more info.*

### ***How Far Back Do You Go?***

It was mentioned to me recently that the High Halstow Times is approaching its 50th Birthday. That's approximately 550 editions (11 per year) of HH news, letters, updates and the occasional dog-poo complaint.

The oldest edition I have in my possession is from December 1983 in which Mrs Rachel Laphorn is thanked for her 15 years of hard work as Editor and Printer. This would certainly seem to confirm that the High Halstow Times is at least 48 years old.

It would be great to find any earlier copies which are still in existence and to scan them and store them electronically for future generations and for people to look-up online. We might also reproduce certain pages in future editions.

If you have any earlier editions, please get in touch at [editor@highhalstow.org.uk](mailto:editor@highhalstow.org.uk) or 01634 250911

Carl Mitchell  
HHT Editor

### ***Local Groups - Information***

We would like to put together over the next couple of months an insert of the local groups within the village

This is your time to let us know what you are about, when and where you meet etc. We would like to update the website as well so if you running one of these groups please let us have the details and we will do the rest. You can see what we have already said about your group on

<http://highhalstow.org.uk/local-groups>

It is your chance to promote and seek new members. If you could let us have the details at [editor@highhalstow.org.uk](mailto:editor@highhalstow.org.uk)

### ***High Halstow Village Hall***

The stairs are in and Phase Four will be finished shortly. This will give us another facility to hire out and this in turn will help the sustainability of the hall well into the future. Thank you all for your continued support as without you this would not have been possible and it goes to show what can be achieved if we all work together.

### **Quizathon**

Many thanks for all who came along and supported the last Quizathon. This raised £300 and it is good to see the number of tables coming along increasing. Two new tables of quizzers came along and they certainly enjoyed themselves, especially for one with special delivery of sandwiches. They may not have won but they won for food presentation.

Note for Mark your teammates won this time – was it because you were not there????

Many thanks to John and Lesley for the work involved with this event.

Special thanks to Margaret who although not in the best of health continues to support this village and throws herself into this event. Get well soon and thank you for providing questions my teammates could answer

### **Fridges**

The Hall Committee would like to say a big thank you to Margot and Justine for their kind offers of two fridges. These will be used we suspect for the bar area and they are very much appreciated.

It is all the extra help from the community, which provides the finishing touches and makes us think we are on the right track in improving this hall.

### **Future Fund Raising Events**

#### **Golf Tournament - September**

We were hoping to publicise details in this edition but due to other issues we will be placing the details in the shop, Facebook and the website so please keep watching. The date is likely to be late September.

#### **Murder Mystery - September**

Sold Out!

#### **Quizathon 14<sup>th</sup> October 7:00pm**

The next Quizathon at the Village Hall is **October 14<sup>th</sup>**. To book your team please contact Margaret on 244203, entry fee £3.00 per person.

## ***Resume Of The Parish Council Meeting Held On 13 July 2016***

The Parish Council co-opted Linda Atkinson to fill the vacancy caused by the resignation of Stuart Bailey. Linda moved to the village relatively recently and it's good to have new blood on the Council. Stuart had also been the Vice-chairman and Cllr Christine Watson was elected to fill the place.

An update was given on the proposal to install a mobile phone mast on the verge between Eden Road and The Street. This has been given planning approval. The overall height has been reduced from 15m to 12.5 m. The planning officer at Medway Council has suggested that it was not too late for an alternative site to be investigated. A farmer of land off Christmas Lane has said the mast could be sited in his field. George Crozer is trying to contact the developer. A member of the public commented that she was happy for there to be a mast but elsewhere in the village.

RoSPA carried out their annual playground inspection before Brian Williams could contact them to arrange to be present. The report had not yet arrived, but he knew that one piece of equipment for older children needed repairing. New swing seats and a new climbing frame have been installed in the fenced playpark behind the Recreation Hall. The Parish Council would like to thank Medway Cllr Phil Filmer for his grant of £500 from his ward improvement fund towards the climbing frame.

Martin Andrews who represents the Council on the Police Liaison Committee said that yet again he had not been informed of a meeting and seemed to be out of the loop. He warned of people breaking into houses to steal car keys and warned that keys should not be left in full view.

The celebration of the Queen's 90<sup>th</sup> birthday went well and came in under budget. The scarecrow element had been extremely successful and people want to repeat the event.

Members of the public are very concerned about on-road parking in The Street and Christmas Lane, especially on the corner opposite the pub. If double yellow lines were put in, there would be a problem of enforcement, although George Crozer said he had seen a traffic warden the day before.

Enjoy the summer holidays. There is no meeting in August and the next meeting will be held on Wednesday 14<sup>th</sup> September in the Memorial Hall at 8 pm. You are all welcome to attend.

### ***Dog Walkers***

Our rights of way and green spaces are for us all to enjoy. Please be aware that if you are exercising your dog it should be under control at all times, and it is your responsibility to clear up it's mess afterwards. Dog fouling is an eyesore, a serious health hazard and an environmental crime. Please clean up after your 4-legged friend.

## ***High Halstow Hikers***

Our July walk was one recommended by the AA and started from the Green in Westerham. The centre of Westerham is very attractive and popular despite the busy A25 passing straight through it. Our dozen walkers were a little delayed in starting since the "park on the roadside" guidance from the AA had already been noted by many others and led to 100% occupancy before we arrived. Once we had parked up and left the large bronze of Churchill that dominates the Green we headed south and up an incline to give immediate countryside access and excellent views of the North Downs. The walk was considerably hillier than anticipated since the AA's statement of a 90m ascent in the walk related to the vertical distance between the lowest and highest points on the map and ignored the numerous steep ups and downs in between that probably made it closer to 400-500m overall; I think they should stick to roads. Much of the walk was in the woods close to Chartwell, the well-loved

country home of Churchill, that is now National Trust.

Occasionally the route took us out of the woods to admire small clusters of

beautiful chocolate-box style houses or views across the countryside to the South. The weather was warm and fine for the day and we felt very well-exercised on return to Westerham.

The August walk will be on Sunday August 21st and will be local to High Halstow, so we will start from the village hall car park at 10.00.

In September the walk will be around Addington and Offham (famous for its quintain) on Sunday 18th again starting at 10.00.

All are welcome on these walks. They are generally around 5-6 miles and we try to make them no more than of moderate difficulty. Any queries to [mitch.dowsett@btopenworld.com](mailto:mitch.dowsett@btopenworld.com) or 01634-254428

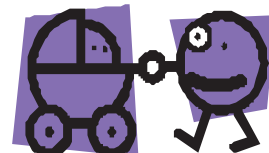


### ***Considerate Parking***

Mums with babies and older people are finding it more and more difficult to walk around the village due to cars parked on the pavement. They are having to walk into the road because of this, which is dangerous and unnecessary.

Please think about this before you park your car/van and try to be a little more considerate.

Thank you  
High Halstow Parish Council





## High Halstow Toddler

Unfortunately as of 16th June 2016 High Halstow Toddler group has now shut, as some of you may already know this group has struggled to make any money for a long while and it seems unfair to rent the hall out at a big loss every week. Thank you to everyone that has contributed to our group along the way.

Regrettably the Mother and Toddlers group has now been disbanded due to a lack of support, the group has been meeting in the hall on Thursdays during term time for many years, run by volunteer Mums, and we thank them for contributing to give a place for people with young children a place to meet.

**Memorial Hall Committee.**

## More Suitcases Wanted

Thank you to those who have donated surplus large suitcases for storing Dramarama costumes.

More are still required so if you are able to help please contact June Collins on 250105 to arrange collection.

## High Halstow 2016 Photo Competition



After the huge success of last year, the HH Photo Competition returns for it's 8th year. Pictures can be emailed to [photos@highhalstow.org.uk](mailto:photos@highhalstow.org.uk) and can be from a camera, phone or any other device. The categories are the same as last year:

Under 16's - 1st, 2nd, 3rd  
Flora & Fauna - 1st, 2nd, 3rd  
People & Places - 1st, 2nd, 3rd  
Overall Winner

Winners will receive a prize, certificate and their photo included in the HH Calendar.

Closing date for entries is 31st October 2016.  
Entries can be emailed to  
[photos@highhalstow.org.uk](mailto:photos@highhalstow.org.uk)

You don't have to be David Bailey to enter, and pictures from mobile phones as well as camera's are all acceptable.

## High Halstow Arts & Crafts Village Market

Handmade Cards & Jewellery,  
Tattoos, Hand Bags,  
Gifts, Make-up, Collectables,  
Cakes and Treats.  
Refreshments available.

### The Memorial Hall

10am - 2pm

**Saturday 13th August**

Sunday 11th September

Sunday 9th October

Sunday 13th November\*

\*12noon - 3pm

Sunday 11th December

**Come and support our village event!**

## Cornish Holiday Cottage Let

A fabulous 300 year old cottage, recently fully refurbished with open fire place, fully fitted kitchen, modern decor and off-road parking, benefitting from two well-furnished bedrooms (1 double and 1 twin).

The cottage is in the hamlet of Trewint, only a mile away from Altarnun, one of the most beautiful villages in Cornwall. The Rising Sun Inn just outside the village is

a 16th century award-winning traditional pub, selling locally produced ales and fresh and innovative meals in a great atmosphere. The cottage is ideally placed for discovering the coastline of Cornwall.

- Electric wall heaters with open fire
- Electric oven and hob, microwave, fridge, dishwasher, TV with Freeview, DVD, WiFi, selection of books, games and DVDs
- Fuel, power and starter pack for open fire (October-March) inc. in rent
- Further fuel for fire available to purchase locally
- Bed linen and towels inc. in rent
- Off road parking for 1 car
- Lawned garden with furniture opposite cottage across road
- One well-behaved dog welcome
- Sorry, no smoking
- Shop and pub 1 mile.

The cottage is advertised with Sykes Cottages (<http://www.sykescottages.co.uk/cottage/Cornwall-Fivelanes/Laburnum-Cottage-935455.html>)

Alternatively I live in the village and will be able to offer a discounted rate if you contact me directly on: Andy 01634 936095  
Mobile: 07958 604268



# HIGH HALSTOW LOTTERY FUND LAUNCH DATE 1 OCTOBER 2016

**£10 per ticket paid by Standing Order on 1<sup>st</sup> of each month.**

**Your ticket number will be your Post Code and House number**

**NO CASH PLAYERS – ONLY STANDING ORDER**

## National Lottery

On average we each spend £416 on scratchcards and playing the National Lottery every year. Given that the odds of winning the jackpot are a whopping **one in 14 million**, most of us are arguably wasting our money.

## The Health Lottery

This lottery was launched in 2011 and gets its name from the fact that 20% of the money raised goes to health-related charities. You buy a £1 ticket at a retail outlet – they are sold in numerous supermarkets and corner shops – and you stand the chance of winning up to £100,000. Your chances of winning the jackpot are **one in two million**.

## High Halstow Community Lottery

As we will have a Small Lottery the highest ever prize cannot be more than £20,000 but you will have more chance of winning. If we have 800 players then you have 1 in 800 chances of winning.

The clear aim of the High Halstow Community lottery is that 25% of the total monies received for the month must go to the chosen Community fund and the remaining 75% will be the PRIZE FUND.

Monies raised will go to our local Church, Recreation hall, Memorial hall, School etc.

## EXAMPLE (approx.)

800 x £10 per month	<b>£8,000 per month</b>	400 x £10 per month	<b>£4,000 per month</b>
25% local charity	<b>£2,000 per month</b>	25% to local charity	<b>£1,000 per month</b>
75% prize fund	<b>£6,000 per month</b>	75% prize fund	<b>£3,000 per month</b>
	<b>(2 x £100 plus jackpot)</b>		<b>(2 x £100 plus jackpot)</b>

Players requesting to play who do **not** reside in High Halstow would be welcome to participate but we cannot exceed the £20,000 prize fund limit (per draw).

All players will be kept fully informed as to how much and what Community Fund has received funding from the High Halstow Lottery Fund.

All players must arrange a Standing Order payment into High Halstow Lottery Fund Bank Account by 1<sup>st</sup> of each month. The draw will be made on the nearest Saturday to the 7<sup>th</sup> of that month. These 7 (approx.) days will allow administrators to confirm that monies have been received and enter relevant post codes into the draw. Preferably the draw can take place in The Red Dog in front of witnesses providing security and fairness for all.

**Interested? Contact Linda Atkinson by email [Linda23Atkinson@gmail.com](mailto:Linda23Atkinson@gmail.com) for High Halstow Community Lottery bank details. Standing Orders to start from launch date of 1 October 2016**

**IMPORTANT INFORMATION: This will be a Small Lottery for our community and therefore no-one associated with the fund will take any form of salary from this fund.**

*Please note that this is a completely independent and private venture.  
It is not being run by or being run on behalf of the High Halstow Parish Council.*

## Gamble Responsibly

### What is responsible gambling?

Responsible gambling means staying in control of how much time and money we spend gambling. Whether you are buying a lottery ticket or scratch-card, placing a bet, playing poker or bingo, or playing on a gambling machine or casino game, gambling responsibly means treating the activity as just one form of entertainment in a balanced lifestyle. Just like with other forms of entertainment, gambling is a form of expenditure, and responsible gambling means not spending more money or time than we can reasonably afford, keeping in mind all our other responsibilities in life.





Based in High  
Halstow  
Contact Jade  
07708 394979



Permanent Makeup is an advanced technique used to apply coloured hypoallergenic pigments into the dermal layer of the skin. The pigments are made from natural minerals making enhancements look very natural that can last for years but will fade over time.

#### Treatment areas:

**Brows:** Eyebrows frame the face, with the right shape & colour brows it can make you look years younger

**Eyes:** It can be difficult to apply eyeliner correctly & make it last all day. Define your eyes with eyeliner or lash enhancement.

**Lips:** Define & enhance your lips with a gorgeous lip liner, blush or full lip colour.

Book a free consultation to see how Permanent Makeup can help you.

[www.serenitypermanentmakeup.co.uk](http://www.serenitypermanentmakeup.co.uk)

### *Off to University?*

The High Halstow Relief in Need charity (Reg No. 250996) has a limited number of small bursaries available to students going to University for the first time.

Students who started last year and were able to apply for a bursary may also apply.

The scheme is available only to students living in the parish of High Halstow at the time of application.

Closing date is 30<sup>th</sup> September 2016 and applications received after that date will not be considered. In your letter of application please state your name, address, telephone number *and email address*, the universities you have applied for and the length of your course. *A copy of your placement offer will be required* before the bursary can be given. No appeal is available for unsuccessful applicants.

Please apply in writing to: The Chairman, High Halstow Relief in Need charity, The Rectory, 2 Cooling Road, High Halstow, Rochester, ME3 8SA. PLEASE mark 'Bursary Application' on the front of the envelope.



### *HH Village Website*

Please visit the Parish Council website for everything about our village. You can see the minutes of your Parish Council or look up local groups in the village, past copies of the High Halstow Times, and pictures of recent events. Please note that there is now an RSS feed on the Parish Website where you can get automatic updates when the site is updated. Please visit [www.highhalstow.org.uk](http://www.highhalstow.org.uk) and follow the instructions on the right hand side.

### *Come and Meet Your Parish Councillors*

As there is no Parish Council Meeting held in August, there will be no surgery at Kings Kitchen this month. But, we will be back in September on Tuesday 13<sup>th</sup> from 10.30am to 12 pm.

If you have a problem or a question you want to ask before September, all your Parish Councillors can be contacted and a list of their contact numbers are featured in this magazine.



Chris Watson and Gary Jerreat.

## **NEW Fitness class starts 6th June**

### **High Halstow Village Hall**



## **GLOWFITT**

Easy to follow dance moves to club tunes in the dark with disco lights and glowsticks!

No need to pre-book, just turn up! Mondays at 6.30pm at the High Halstow Village Hall

For more info like our Facebook page!



**JR Fitness 07746082182**



### **Thank You Thank You Thank You**

For the second month in a row The Friends of St Margaret's have big thank you to pass on. This time it is to the Cuxton Music Group who performed so well in the Church last month. Thank you all for coming out for the event which raised £263. Many thanks to Maggie and Ken for organising this event, it really was a great evening.

### **Scarecrow Festival**

To confirm following the success of this year's first Scarecrow Festival there is another one to be planned next year. Watch this space for further details.

### **Electrics**

The Friends are pleased to announce that it has awarded a grant of £2,000 towards the cost of the electrical work recently carried out in the Church. This is what the Friends were formed to do, help the PCC in maintaining the building now and for the future. The PCC is drawing up a plan for other works so again please watch this space and see what is happening and how you can support the work.

Although in the past we had accepted requests for people to pay an annual fee in one go, it was not clear enough to all that this was the case, so just to be clear you could pay as follows:

- 1 A monthly Standing Order
- 2 A one off Annual Fee

Forms are available on [www.thefriendsofstmargarets.org.uk](http://www.thefriendsofstmargarets.org.uk) or from any Committee member.

### ***Speed Limits***

Please can I remind people to observe the speed limits through the Village. We should all be mindful that High Halstow

is a nice place to live where children, older residents and walkers should feel safe. Some may not be as aware of the traffic as they might otherwise be. Please be careful.

**George Crozer, HH Parish Council**



### ***High Halstow Football Club***

We are looking for new players and sponsors as it heads into the 2016/17 season.

Running for three seasons in the Rochester and District League on a Saturday, the team reached two semi-finals and finished third in Division 4 before being moved up two divisions last year.

Unfortunately, injuries - and key players leaving due to work commitments - meant things didn't go as planned in the league, but the club is now looking to regroup in a lower division for 2016/17.

The team is a young, friendly bunch, training on Tuesdays and playing their home matches at High Halstow Rec, with a large group of the players from the village. So if you have played at a decent standard and are looking for a new team please get in touch.

If you run a company interested in sponsoring us, we would love to hear from you, you'll get your name on our shirts and we'll push for some local coverage as well. Contact Tom Pauley on 07527622765 for more details'

### ***The Village Shop***

#### ***Opening Hours***

Monday – Saturday 7am – 8pm

Sunday 8am – 5pm

Telephone number: 01634 254561

### ***Need to Hire a Hall***

If you are interested in hiring either of the halls in the village for a party, function or meeting please contact:

Memorial Hall - Angela Forward 251756

Village Hall - Crystal Wakefield 251849

**\*\* Please do not call on a Sunday \*\***

### ***Family Funday Sunday, Olympic Specials***

**10am to 1pm at all Sports Centres**

£5 per family

Come and take part in fun filled sports days that the whole family can enjoy with a variety of sports based around the Olympics. £5 per family (up to 2 adults and 2 children) with an additional £2 per person beyond that number. Children aged 6-11 years old.

- Sunday, 7 August - Deangate Ridge Golf and Sports Complex
- Sunday, 14 August - Medway Park
- Sunday, 21 August - Strood Sports Centre
- Sunday, 28 August - Splashes

More information available at [www.medway.gov.uk](http://www.medway.gov.uk)







## RSPB Northward Hill Seasonal Highlights

Each season brings a different experience at our nature reserves. In spring, the air is filled with birdsong as they compete to establish territories and attract a mate. In summer, look out for young birds making their first venture into the outside world. Autumn brings large movements of migrating birds - some heading south to a warmer climate, others seeking refuge in the UK from the cold Arctic winter. In winter, look out for large flocks of birds gathering to feed, or flying at dusk to form large roosts to keep warm.

### Spring

Heron and egrets nest in woodland. Nightingales return and sing in dense undergrowth. Carpets of bluebells form mid April-May and whitethroats sing from the scrub. Avocets nest on reservoir islands.

### Summer

Hobbies hunt dragonflies over the marsh, while marsh Harriers quarter the reedbeds. You could see the rare white-letter hairstreak butterfly in the woodland, or turtle doves on overhead wires.

### Autumn

Swallows gather around farm buildings. Noisy jays in wood gathering acorns. Dragonflies fly over reserve in late summer. Migrating waders such as spotted redshanks and green sandpipers may be seen on the reservoirs.

### Winter

Large numbers wildfowl gather on marshland floods. Wintering thrushes, finches and buntings gather in scrub. Redwings and fieldfares can be seen in the orchards below wood. 4,000-rook 'spectacular' as they prepare to roost in wood.



## High Halstow Pre-school

Modular Building, Primary School, Harrison Drive,  
High Halstow, Rochester, Kent. ME3 8TF  
01634 255088  
Proprietor/Manager Mrs Anita Russell BA (Hons), EYPS

---

- ✓ 'Outstanding Provider' Ofsted
- ✓ 2009-10 Extensive Outdoor Facilities
- ✓ Excellent Links with Primary School
- ✓ Friendly, Qualified Staff
- ✓ Affordable Childcare

---

Open Weekdays, term time only  
8.45 am - 3.30pm

Morning, lunch, afternoon and all day sessions available.

Children are funded for 5 free sessions the term following their third birthday.

Don't take Ofsted's word that we are an outstanding provider, come and see for yourself.

Ring 01634 255088

## Dates for Diary

### Every Monday:

Bumps & Toddler's

09:00

Village Hall

Glowfit

18:30

Village Hall

### Every Tuesday:

King's Kitchen

10:00

Memorial Hall

Bell Ringers

19:30

St Margaret's Church

### Every Wednesday:

Stay & Play

09:00

Village Hall

### Every Thursday:

Sugar Babes

19:00

Memorial Hall

### Every Saturday:

Karmann Dancers

09:00

Memorial Hall

Karate

09:30

Village Hall

### Every Sunday:

Déjà Vu Spiritual Centre

18:30

Village Hall

### Every 4th Wednesday:

Friendly Club

14:00

Memorial Hall

### Other Dates:

Tuesday 2nd:

20:00

Gardening Club

Memorial Hall

Wednesday 3rd:

19:30

Women's Institute

Memorial Hall

Sunday 7th:

09:30

Family Service

St. Margaret's Church

Sunday 13th:

10:00

Arts & Craft Fair

Memorial Hall

Sunday 21st:

High Halstow Hikers

Details in HHT

Sunday 21st:

09:30

Family Service

St. Margaret's Church

Saturday 27th:

15:00

Gardening Club

Annual Show

*Local groups, please let us know the dates of your meetings/events for the coming year so we can include them in the HHT and on the website.*



## Jonathan Computers

Freephone: 0800 321 38 79

Mobile No: 07905 120 557

Email: sales@jonathancomputers.co.uk



*Computer problems solved quickly and cheaply...with a friendly face*

***And Best of all I come to YOU!!!!***

- ☐ Dramatically Speed up Slow PC's
- ☐ Virus & Malware Removal
- ☐ Fix Broadband connection issues
- ☐ Data Transfer & Recovery
- ☐ Install Windows 10 or Fix Install Issues
- ☐ NO 'Call Out' Charge
- ☐ Make Win 8/8.1 look like XP, Vista or 7
- ☐ New Economy Pc's & Laptops



**NEW!!!!!!**  
**Windows 10™**

From 8th April 2014 All Support for ALL XP™ Versions has discontinued!!!!

If you are using a computer with Windows XP on  
**YOU ARE AT SEVERE RISK!!!!**



**I Am Based In High Halstow  
So Can Be Quick To Respond!**

**01474 879878**

(Gravesham Office Number)

## St. James' Sure Start Children's Centre

For families with children aged 0-5 years



### Stay and Play

at High Halstow Village Hall

**Wednesday  
9am-10.30am**

**For children 0-5 years.**

A wide range of activities for children and adults to get involved with including creative activities, physical activities and exploration.  
**Fresh fruit and drinks are available.**

**IF YOU WOULD LIKE FURTHER INFORMATION, PLEASE CONTACT:**

**St. James' Sure Start Children's Centre**

St. James' Church of England Primary Academy High Street Isle of Grain ME3 0BS

**01634 270341** E: childrenscentre@stjames.medway.sch.uk

www.stjamesisleofgrain.org.uk

**Sure Start Children's Centres**  
Medway



**Medway**  
Serving You

## Murder at Heronwood Falls Saloon



### Murder Mystery Evening

"Howdi Partner" you are invited to the Heronwood Falls Saloon to help us solve a murder!

Friday 23rd September 2016

Saturday 24th September 2016

Doors @ 6:30pm

Show starts promptly @ 7:00pm

(Please try to be seated by 7:00pm)

Tickets £10.00\*

including 3 course meal with licensed bar.

at High Halstow Recreation Hall

Tickets available from Wenda on 253169

Hosted by the HH Village Hall Committee  
in partnership with Dramarama

\* Tickets will not be available on the night.



## ***How To Keep Your Vehicle Safe: The Basics***

There has been a recent increase in car crime on the Peninsula, the following pointers might help keep your car safe.

### **Always**

- 1 Close the windows and sunroof; lock the doors and activate any security devices when leaving your car unattended, even for only a few minutes.
- 2 Keep your car keys safe when at home – many cars are stolen following a house break in, so make sure you don't leave your keys in an obvious place such as the kitchen or hall table and beware that keys can be stolen through the letterbox.
- 3 Park with care. Try to park in a busy, well-lit area, close to CCTV cameras particularly at night or if you are leaving the vehicle for a long time. Find police approved car parks (those displaying 'ParkMark™') at [www.saferparking.com](http://www.saferparking.com).
- 4 Ensure your garage is as secure as possible with British Standard 5-level mortice locks and bolts for side and rear doors. Metal up and over doors can be secured with purpose made locks fitted to either side, to reduce leverage. Wooden double doors can be secured with heavy hasps and staples and closed shackle padlocks.

### **Never**

- 1 Leave cash, credit cards, chequebooks, mobile phones or other valuables in the car. Even a jacket or a plastic bag can tempt a thief. Hide any valuables in the boot of your car before you start your journey.
- 2 Never leave your keys in the car, even for a second – treat them as you would your cash and credit cards. Do not leave material with details of your home address in your vehicle.
- 3 Never leave your belongings where they can be seen.
- 4 Leave your vehicle documents inside the car. Hide them at home and not in an obvious place.

### **Property and equipment marking**

- Etching your Vehicle Identification Number (VIN) or registration number onto your windscreen, windows and headlights provides an additional visible deterrent.
- Property mark your equipment, such as stereos and satellite navigation systems, with your postcode and house number. Make a note of the make, model and serial number and register it at the National Property Register, visit: [www.immobilise.com](http://www.immobilise.com)

### **Steering locks**

Steering locks are a very visible deterrent and are ideal also for older cars. Fit one that has been tested by Thatcham and meets Category 4 approval.

For further crime prevention advice visit: [www.met.police.uk/crimeprevention](http://www.met.police.uk/crimeprevention) or call 0300 123 1212 or visit your nearest police station.

### **Kings Kitchen**



A Coffee and Cake Café  
for the Whole Village.

Open 10.00am - 1.00pm  
every Tuesday  
in the Memorial Hall.

Why not come in and enjoy a  
cuppa and a chat.

A warm welcome awaits you.

**St. James'**  
**Sure Start Children's Centre**  
For families with children aged 0-5 years

**Bumps to Toddlers**  
at High Haistow Village Hall  
**Monday**  
**9am-10.30am**

For pregnant women and children from birth to toddler stage.  
This session includes sensory fun,  
introducing solid food, stories & rhymes, tummy time, staying safe  
and much more!  
Come along and meet other parents and their babies.  
Self baby weighing is also available in this session.

IF YOU WOULD LIKE FURTHER INFORMATION, PLEASE CONTACT:  
**St. James' Sure Start Children's Centre**  
St. James' Church of England Primary Academy High Street Isle of Grain ME3 0BS  
**01634 270341** E: [childrenscentre@stjames-medway.sch.uk](mailto:childrenscentre@stjames-medway.sch.uk)  
[www.stjamesisleofgrain.org.uk](http://www.stjamesisleofgrain.org.uk)

**Sure Start**  
**Children's Centres**  
Medway

  
A Sure Start Children's Centre

  
Serving You

## Readers Letters

Dear HHT

I recently applied to be a Parish Councillor for High Halstow and am pleased to let you all know that I was successful.

As a couple, we had always wanted to live in High Halstow and were fortunate enough to buy a bungalow in Goodwood Close in May of 2015.

We have 2 grown children and 7 grandchildren.

I have been a legal secretary most of my working life, working for the largest law firm in the world for over 15 years, but have now retired.

I have plans to get more involved in our community – mostly by way of our own High Halstow Community Lottery. Our Church requires funding for renovations, as does our Recreation hall, Memorial hall and our school.

I have been given permission to promote the lottery in this publication which you can see on page 5.

I have joined the bell ringing group at the Church on Tuesday evenings and I also want to join the W.I. So, I'm a newbie to both groups – why not join me!

I hope with your help I can make the High Halstow Community Lottery a success while helping where I can on the Parish Council.

**Linda Atkinson**

**Goodwood Close**

### **Linda's Thought for the day**

Marriage is a relationship in which one person is always right and the other is the husband.

High Halstow & District Gardening Club

## ANNUAL SHOW



A FULL SHOW SCHEDULE AVAILABLE  
FROM SHOW SECRETARIES 01634 221579  
OR BY EMAIL [hhdgc@outlook.com](mailto:hhdgc@outlook.com)

Dear HHT,

### WHIST IN THE VILLAGE

Since my initial invitation for Villagers to join me in seeing a Whist Club return, the response has been most rewarding from both 'old hands' and those wishing to learn, whom I am sure will receive the utmost support.

To that end I have booked the Memorial Hall on Monday 15th August, from 2pm - 4pm for an inaugural "get together". My experience in starting such a venture is nil and I would like to use this meeting simply to gauge the level of support, followed by getting answers to the important questions such as how do we set about this, how often and when?

I consider myself only a conduit in which to start this project and welcome every and any assistance to make this a success.

If you are interested but cannot make the meeting you can leave a message on my Ansa-phone 251448.

Christine Wilson

### *Your Parish Councillors*

George Crozer, Chair 01634 250286

e.mail: [george@highhalstow.org.uk](mailto:george@highhalstow.org.uk)

Christine Watson, Vice Chair 01634 256529

Martin Andrews 07984 791029

Linda Atkinson 07825 619353

Ray Collins 01634 250105

Gary Jerreat 01634 253999

Bill Khatkar 07775 668620

Carl Mitchell 01634 250911

Brian Williams 07908 006448

e.mail: [bdwilliams9@hotmail.com](mailto:bdwilliams9@hotmail.com)

Your councillors may also be contacted through the Parish Clerk:

Mrs Roxana Brammer 01474 871269

[clerk@highhalstow.org.uk](mailto:clerk@highhalstow.org.uk)

The next Parish Council meeting is on Wednesday 14th September at 8pm in the Memorial Hall, all are welcome.

Next edition September 2016; Contributions for September should be sent by 26th August to:

Carl Mitchell, 8 Marsh Crescent, High Halstow ME3 8TJ  
or e.mail to [editor@highhalstow.org.uk](mailto:editor@highhalstow.org.uk)