



# High Halstow TIMES

Home of the Heron



August 2017

## Last month's news

### Scarecrows on Parade for 2017

The Reverend Stephen Gwilt hosted a successful Garden Party on Saturday 1<sup>st</sup> July to raise funds for the general day to day running of the Church and as usual a good time was had by all.

Following the success of last year's Scarecrow Parade at the Queen's 90th birthday celebrations, it had been decided to repeat the event and hold a competition for the best scarecrows at the annual Garden Party. The Scarecrow competition was a separate fund raising event and any monies that were raised will go to The Friends of St. Margaret's Church fund, which raises money for the upkeep of the fabric of the Church itself.

Villagers were invited to build a scarecrow and position their creation in their gardens for up to two weeks before the Garden Party. On the day of the party participants were to move their scarecrow into the Rectory Garden where garden party-goers were able to enjoy them and vote on their favourites. This caused much amusement and speculation.

The whole event was great fun for all concerned. Villagers were again talking about the scarecrows and which one they thought was the best so far. Almost daily, the scarecrows were appearing in gardens around the village. Delivery drivers, postmen and new visitors to the village were bemused to see the scarecrows appearing and were enquiring as to what was going on. In fact the scarecrow that had apparently fallen off its horse and landed in a hedge in Harrison Drive caused the most entertainment for everyone. A round of applause must go to the creator who, understandably, was unable to move the scarecrow to the Rectory grounds for the competition.

The Scarecrow Festival will now be an annual event and villagers are already devising new ideas of what type of scarecrow to make next year.

Votes were counted at the end of the day and the winners are shown here.

**For further information on the Scarecrows and a video of those shown at the Garden Party can be viewed on our village website.**  
[www.highhalstow-pc.gov.uk](http://www.highhalstow-pc.gov.uk)



*Main photo, top: 1<sup>st</sup> place was the San Miguel Scarecrow;  
Above, left: 2<sup>nd</sup> place was the Rod Stewart Scarecrow;  
Above, right: 3<sup>rd</sup> place was the Minions Scarecrow.*

## Editorial

Its been hard work but we finally managed to get our first edition as a team under way. Natalie and I are pleased with the final result and we hope you agree.

To help us keep the content interesting and up to date we would be pleased if you could let us know any news that you would like to go into this publication – it is your publication after all.

You can either email us at [Editor@HighHalstow.org](mailto:Editor@HighHalstow.org) or write to us via **Linda Atkinson, 32 Goodwood Close, High Halstow.**

There has been a lot of activity this month and we hope we have captured everything.

You will have seen on the Front page the winners of the Scarecrow competition, we then had the Heron Awards, the Garage Safari and the HH Community Choir singing in Concert in our Church. I met up with friends in the Kings Kitchen and one friend, who does not live in the village was saying how envious he was of us living in High Halstow because we always have so much going on. I agree. We are very lucky to have such a great village.

**Linda and Natalie**

### 2017 HIGH HALSTOW PHOTOGRAPHIC COMPETITION



Villagers are invited to submit their pictures taken in the village for the 2017 Photographic Competition. This is our 9th year and we have had some amazing pictures submitted over the years.

Please send your entries to  
[photos@highhalstow.org.uk](mailto:photos@highhalstow.org.uk)

The categories are:

- Under 16's
- Flora and Fauna
- People and places
- Overall winner

Winners will receive a prize, a certificate and their photo included in the **High Halstow 2018 Calendar.**

The closing date for entries is **29 October 2017**

## Letters

### The Friends of St. Margaret's – Scarecrow Parade

It was great to see our second Scarecrow event attract even more entries than last year. At least Seventy Seven were displayed in the village of which two thirds made it to the Rectory Garden Party and subsequently into the Churchyard where they continued to attract much interest. My grateful thanks go to those who made Scarecrows, they were excellent and also to those who gave up time to organise the event before, during and after the Garden Party. Thanks also to those who contributed to the Two Hundred and Thirty pounds raised for our funds which are dedicated solely to the task of preserving St. Margaret's, the oldest building in the village.

We have already had many requests to make this an annual event so you have a whole year to plan your first or next Scarecrow.

**Michael Meredith,**  
*Chairman, Friends of St. Margaret's*

---

### Whist Club

Because this is the height of the holiday season there will not be a meeting this August, the next playing day will be as usual the third Wednesday in the month, the 20th September, in the Memorial Hall at 2pm.

Everyone who just enjoys playing cards for fun is welcome.

Thank you,  
**Christine Wilson**

---

### Christian Aid Week

I would like to thank all who so generously supported Christian Aid Week whether it was through donating, supporting events at the King's Kitchen and St Margaret's Church, or knocking on doors.

We raised £1333.45. Well done everyone.

**Jane Cook**

---

### Thank you

I dropped my phone whilst walking the dog on Sunday and would like to thank the person who found it and managed to return it to me via my brother.

I believe this person lives in the village too.

**Vicky Read**

## Heron Awards for 2017

It has been 10 years since the Relief In Need Heron Awards have been awarded. Every day sees acts of kindness, generosity, sacrifice and courage in our small community. From a friend who visits sick neighbours to the single parent struggling to raise young children alone. From the sick child who always has a smile to those who work sacrificially to ensure our community is a wonderful place to live in.

The rules and conditions are that the nominee must either live or work in the village or attend the village school. Or, they may make a significant contribution to the village.

Presentation of the Heron Awards were made on the evening of Wednesday 28 June in High Halstow Recreation Hall by Stephen Gwilt.

**Lilly Adams** Courage Award (left) and **Claire Herring** received a HGood Neighbour (right)



**Gary Thomas** received an award for Community Involvement (left) and **Raymond Collins** an award for Community Involvement



**David Laphorn** an Environment Care award (left) and **Steve Joyce**, Special Heron award for his commitment as a First Responder (right)



**Hollie Bourner**  
Growing in Confidence

**Katie Bourner**  
Growing in Confidence

### All nominations were made to the Heron Awards judges and those nominated were:

Lilly Adams	Hollie Bourner	Katie Bourner
Claire Herring	Trish Evanson	Gary Thomas
Raymond Collins	Brian Williams	Clare Crubb
Carl Mitchell	Douglas Bradford	Elizabeth Meredith
Jack Gullivan	June Collins	David Laphorn
Steve Joyce		

*Many congratulations to all those nominated.*

For further information on the Awards and a video acceptance speech from Steve Joyce can be viewed on our village website. [www.highhalstow-pc.gov.uk](http://www.highhalstow-pc.gov.uk)

## Summer Concert

The Cuxton Music Group and the High Halstow Community Choir sang beautifully in a Summer Concert that took place in St Margaret's Church on the evening of Wednesday 19 July. The Concert was organised by the Friends of St Margaret's to raise funds for the maintenance and refurbishment of the Church. The Concert was well attended by friends and relatives of both choirs and many of our villagers. The High Halstow Community Choir meet to sing in the Church on alternate Mondays from 7:45 pm until 9:00 pm. They always welcome new members.

### Songs sung by the High Halstow Community Choir

<b>Ain't Misbehavin'</b>	Musical review
<b>Any dream will do</b>	Joseph and his Amazing Techni-coloured Dreamcoat
<b>Sit down you're rockin' the boat</b>	Guys and Dolls
<b>One hand one heart</b>	West Side Story
<b>A Nightingale sang in Berkeley Square</b>	Popular Vera Lynn song 1939
<b>We'll meet again</b>	Popular Vera Lynn 2 <sup>nd</sup> world war song
<b>As long as I have music</b>	Popular Choir song by Robert Eyles and Robert Gould

For further information on High Halstow please visit our village website.  
[www.highhalstow-pc.gov.uk](http://www.highhalstow-pc.gov.uk)

## Parish Council News

### Resume of the Parish Council Meeting held on 12<sup>th</sup> July 2017

Councillors co-opted a new member at the meeting held on 12th July. Michael (Mick) O'Hanlon was selected and took his seat at the table. Mick is a retired engineer, starting with what is now British Telecommunications. After that he became a premises manager at a primary school. He has lived in the village for 3½ years and is involved with the community. We all look forward to working with him and he with us..

There were further discussions about setting up Drop Box. As the Clerk uses her own IT equipment a suggestion was made that a lap-top is provided for her so that Drop Box would only be for High Halstow and that her personal files would not be uploaded by mistake. Costs will be researched and the subject will be put on the agenda for the next meeting.

You will all have noticed the marking out of the car park and the new "IN" and "OUT". A quotation was accepted to bury the water pipe to the allotments at the rear of the toilets to prevent more vandalism and the burnt out litter bin will be replaced. Brian Williams reported that RoSPA would shortly be carrying out their annual inspection of the play equipment.

Ray Collins reported that this year there have been more flowers and butterflies in Forge Common.

Brian had been approached by Medway Council's transport officer about timetables at the bus stops with the new shelters. After discussion it was agreed the timetables should be fixed to the bus stop poles. Brian is also in discussions about re-locating the shelter at the end of Christmas Lane to replace the dilapidated shelter on the A228, so that the Parish Council can install a new shelter of the wooden design at the vet's.

This would be in next year's budget. He also reported that Medway Council has received complaints about the parking in Christmas Lane by the cricket pitch and said they had asked if the Parish Council had any objection to a clearway being introduced. It was agreed there would be no objection and Medway Council will go out to consultation in due course.

Ray reported that hirers of the halls have had problems in the car park with youths and drug dealing. If you see anything going on, report it to the police.

Martin Andrews had attended a police liaison meeting. He reported that from September, there will be only one PCSO for the whole of the Hoo Peninsula and that one Medway Council warden was covering the whole area.

Linda Atkinson discussed a minor change to the advertising in High Halstow Times. It was emphasised that payment for all advertisements should be in advance. She was being assisted by someone who could do the layout for her.

Chris Peek said that the Youth Club still needs adult helpers. If you can volunteer, please contact her. The club will re-open in September.

Chris Watson reported that the Headteacher at the school was on maternity leave and there was a stand-in Head.

Ray Collins reported that the scarecrow competition had raised £200 so far for the Friends of St Margaret's. The collection boxes were still out.

**The next meeting will be held on Wednesday 9th August in the Memorial Hall at 8 pm. We look forward to seeing you there.**

### Come and meet your Parish Councillors

Christine Watson and Gary Jerreat, two of your Parish Councillors, will be at Kings Kitchen in the Memorial Hall on: **Tuesday 8th August** from 10.30 – 12.00pm and every 2<sup>nd</sup> Tuesday in the month.

Chris and Gary will be able to explain about the projects the Parish Council are undertaking or you may have an issue you want to discuss.

#### Your Parish Councillors

George Crozer, <i>Chair</i>	01634 250 286
Christine Watson, <i>Vice Chair</i>	01634 256 529
Martin Andrews	07984 791 029
Linda Atkinson	07825 619 353
Ray Collins	01634 250 105
Gary Jerreat	01634 253 999
Bill Khatkar	07775 668 620
Brian Williams	07908 006 448



Your Councillors can also be contacted through the Parish Clerk Mrs Roxana Brammer.  
Email: [clerk@highhalstow.org.uk](mailto:clerk@highhalstow.org.uk), Tel: 01474 871 269

**For further information on how your Parish Council works for you please visit our village website. [www.highhalstow-pc.gov.uk](http://www.highhalstow-pc.gov.uk)**

## High Halstow Village Hall

### Quiz Night

A big thank you to all that came to support the latest Village Hall Quiz, which saw £130, raised for the Hall. Again thanks to Margaret, Lesley and John for organising this event. We are reviewing dates for the year for this event so please watch this space in the next HHT so you can book your diaries.

### Garage Safari

This was a new event for the Hall and what a success it was. We had sixteen locations including the Village Hall, which was terrific for the first time. We heard of some great bargains to be had as well as the sellers being happy to have cleared out some of their items and making some money. We know some large items were sold which would never have made it to a Boot fair for logistical reasons so it gave people an opportunity to sell these items.

One stallholder had all their items in the garage for sale and for clearing up it was a case of closing the door ready for the next one, better than getting up at six in the morning to go elsewhere

We asked for feedback and any questions so that we can improve on the next time and some of these are as follows:

**Q1 Could the event be on for longer?**

A1 We will be looking to run the next event for at least four hours

**Q2 We advertised items for sale in Facebook and the website but the map didn't show where these items were located?**

A2 This was deliberate to encourage buyers to visit as many stalls as possible as it would have been impossible to list all items for sale and thought to be fairer to all stallholders



**Q3 Could we run the event on a Sunday?**

A3 There are bigger Boot Fairs run locally most Sundays and this may detract some buyers and sellers from attending this one

**Q4 Will we run another one?**

A4 You will be pleased to know the answer is YES. It will be in September but at the time of going to press the date is not confirmed so please watch out for the poster in the shop/Hall as well as next months HHT.

Again many thanks to all of those who booked a stall either in the Hall or at their property and for the many people who came round on the day and look forward to seeing you at the next one in September.

**Village Hall Committee**



For further information on High Halstow please visit our village website.  
[www.highhalstow-pc.gov.uk](http://www.highhalstow-pc.gov.uk)

## What's Going On?



# Strawberry Tea

Everyone is welcome

**Wednesday 2<sup>nd</sup> August**

**From 2.30pm until 4.30pm**

**Entrance £3**

6 March Crescent, High Halstow

There will be a small selection of craft stalls, tombola, a raffle and of course food!



Further WI events which please hold as dates for your diaries:  
**EVERYONE IS WELCOME**

### **W.I. Fashion Show**

**Friday 8<sup>th</sup> September** in the Recreation Hall, High Halstow

*Entrance £7*

Time to be confirmed

### **W.I. Halloween Children's Tea**

**Saturday 28<sup>th</sup> October** in the Recreation Hall, High Halstow

*Entrance to be confirmed*

Time to be confirmed

**These are fund raising events to enable the Women's Institute in High Halstow to fund a new village sign which has already been commissioned.**

### **Kings Kitchen**

**A Coffee and Cake Café for the whole village**

**Open 10.00 am – 1.00 pm**

**Every Tuesday**  
in the Memorial Hall,  
High Halstow

Why not come in and enjoy a cuppa and a chat.  
A warm welcome awaits you.

## Events

<b>AUGUST</b>	2 <sup>nd</sup> Wednesday	14:30-16:30	<b>WI Strawberry Cream Tea ALL WELCOME</b>	6 Marsh Crescent, High Halstow <i>Entrance £3</i>
	26 <sup>th</sup> Saturday	09:30	<b>High Halstow Gardening Club ANNUAL SHOW</b>	Recreation Hall, High Halstow
<b>SEPTEMBER</b>	2 <sup>nd</sup> Saturday	14:00-16:00	<b>Photography Competition All Hallows</b>	All Saints Church, All Hallows <i>Entry fee of £2.50 with photograph</i>
	8 <sup>th</sup> Friday	Time TBC	<b>WI Fashion Show ALL WELCOME</b>	Recreation Hall, High Halstow <i>Entrance £7</i>
	9 <sup>th</sup> Saturday	19:30	<b>The Three Musketeers</b>	All Saints Church, All Hallows <i>£10 Adults, £7 Children under 12 and OAP</i>
<b>OCTOBER</b>	10 <sup>th</sup> Tuesday	12:00-20:00	<b>Restart a Heart OPEN TO ALL AGES</b>	Recreation Hall, High Halstow
	28 <sup>th</sup> Saturday	Time TBC	<b>WI Halloween Children's Tea</b>	Recreation Hall, High Halstow
	29 <sup>th</sup> Sunday	<b>CLOSING DATE</b>	<b>Photographic Competition 2017 High Halstow</b>	

Do you know of a usual event that we have missed? Please let us know: [Editor@HighHalstow.org.uk](mailto:Editor@HighHalstow.org.uk)

REGULAR DATES			
<b>MONDAYS</b>	Line Dancing	10:30-12:30	Memorial Hall
<b>TUESDAYS</b>	Kings Kitchen	10:00	Memorial Hall
	Circuit Training	18:15	Memorial Hall
	Youth Club	19:00-20:45	Recreation Hall
	Bell Ringers	19:30-21:00	St Margaret's Church
<b>WEDNESDAYS</b>	Tai Chi	10:30-11:30	Memorial Hall
<b>THURSDAYS</b>	Seated Exercise	11:00-11:45	Memorial Hall
	Sugar Babes	19:00	Memorial Hall
<b>FRIDAYS</b>	Pilates	14:15-15:45	Memorial Hall
<b>SATURDAYS</b>	Karmann Dancers	09:00	Memorial Hall
	KLUK Martial Arts	09:30	Village Hall
<b>SUNDAYS</b>	Holy Communion BCP	08:00	St Margaret's Church
	Deja Vu Spiritual Centre	18:30	Village Hall

Every 1 <sup>st</sup> WEDNESDAY	Women's Institute	19:30	Memorial Hall
Every 2 <sup>nd</sup> WEDNESDAY	Parish Council Meeting	20:00	Memorial Hall
Alternate MONDAY	Community Choir (Summer break)	20:00	St Margaret's Church
Every 2 <sup>nd</sup> TUESDAY	Gardening Club	20:00	Memorial Hall
Every 3 <sup>rd</sup> WEDNESDAY	Whist Club	14:00	Memorial Hall
Every 4 <sup>th</sup> WEDNESDAY	Friendly Club	14:00	Memorial Hall
Last in the month FRIDAY	Quiz Nights	20:00	Memorial Hall
1 <sup>st</sup> and 3 <sup>rd</sup> SUNDAY	All Age Worship	09:30	St Margaret's Church
2 <sup>nd</sup> and 5 <sup>th</sup> SUNDAY	Morning Prayer	09:30	St Margaret's Church
4 <sup>th</sup> SUNDAY	Family Communion	09:30	St Margaret's Church
1 <sup>st</sup> SUNDAY	Holy Communion	18:30	St Margaret's Church
3 <sup>rd</sup> SUNDAY	Informal Worship	18:30	St Margaret's Church
1 <sup>st</sup> and 3 <sup>rd</sup> SUNDAY	Baptisms by arrangement	09:30	St Margaret's Church

For further information on High Halstow please visit our village website.  
[www.highhalstow-pc.gov.uk](http://www.highhalstow-pc.gov.uk)

## Scarecrows on Parade for 2017







## Classified

### Cornish Holiday Cottage Let

A fabulous 300 year old cottage, recently fully refurbished with open fire place, fully fitted kitchen, modern decor and off-road parking, benefitting from two well-furnished bedrooms (1 double and 1 twin). The cottage is in the hamlet of Trewint, only a mile away from Altarnun, one of the



a 16th century award-winning traditional pub, selling locally produced ales and fresh and innovative meals in a great atmosphere. The cottage is ideally placed for discovering the



- Electric wall heaters with open fire
- Electric oven and hob, microwave, fridge, dishwasher, TV with Freeview, DVD, WiFi, selection of books, games and DVDs
- Fuel, power and starter pack for open fire (October-March) inc. in rent
- Further fuel for fire available to purchase locally
- Bed linen and towels inc. in rent
- Off road parking for 1 car
- Lawned garden with furniture opposite cottage across road
- One well-behaved dog welcome



The cottage is advertised with Sykes Cottages (<http://www.sykescottages.co.uk/cottage/Cornwall-Fivelanes/Laburnum-Cottage-935455.html>)



offer a discounted rate if you contact me directly on: Andy 01634 936095  
Mobile: 07958 604268

YOU COULD ADVERTISE ON THIS PAGE  
**FROM ONLY £10**

email: [Editor@HighHalstow.org.uk](mailto:Editor@HighHalstow.org.uk)

### Looking For Stall Holders!!

#### Upcoming Craft and Well-being Events:

**HIGH HALSTOW VILLAGE HALL**  
The Street, High Halstow, ME3 8SQ

- 29 July 2017
- 30 September 2017
- 28 October 2017
- 25 November 2017

**CHATTENDON COMMUNITY CENTRE**  
Swinton Ave, Chattenden, Rochester ME3 8PH

- 7 October 2017
- 4 November 2017
- 2 December 2017

For more information and to book a stall contact:

[craftastic.events@gmail.co.uk](mailto:craftastic.events@gmail.co.uk)

Bookings made on a first come first served basis to avoid doubles where possible.



Taking bookings for:

- Craft stalls
- Therapists
- Beauty products
- Well-being advisors
- Mediums
- Healers
- Jewellery

Block and Single Bookings welcome



### CIRCUIT TRAINING

Memorial Hall, High Halstow

**Tuesdays 18:15**

Karen Watson *Personal Trainer*

07581 375 080



Based in High  
Halstow  
Contact Jade  
07708 394979



Permanent Makeup is an advanced technique used to apply coloured hypoallergenic pigments into the dermal layer of the skin. The pigments are made from natural minerals making enhancements look very natural that can last for years but will fade over time.

#### Treatment areas:

**Brows:** Eyebrows frame the face, with the right shape & colour brows it can make you look years younger

**Eyes:** It can be difficult to apply eyeliner correctly & make it last all day. Define your eyes with eyeliner or lash enhancement.

**Lips:** Define & enhance your lips with a gorgeous lip liner, blush or full lip colour.

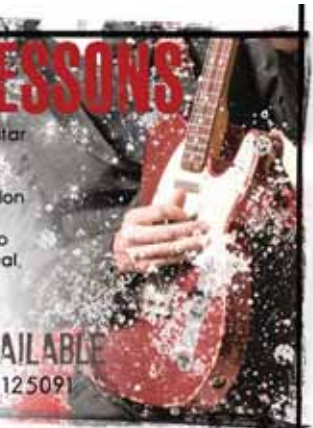
Book a free consultation to see how Permanent Makeup can help you.

[www.serenitypermanentmakeup.co.uk](http://www.serenitypermanentmakeup.co.uk)

### GUITAR LESSONS

Professional guitarist and guitar teacher offers one to one tuition. All ages and abilities welcome. Graduate of London Guitar Institute and playing experience includes The Who and Robbie Williams. Practical grades & theory. Rock, Country, Pop ...

**GIFT VOUCHERS AVAILABLE**  
CALL MATTHEW 07967 125091



### Large double office – TO LET

Hollywood Lane, Wainscott

Suit up to 8 people / 24 hour gated access  
Free on-site parking / Conference Room available

Contact: [arpartnership@aol.com](mailto:arpartnership@aol.com)

## Fundraising for Charity

### Cancer Research

Tamsin Elizabeth hosted a Charity Tea and Cakes in favour of Cancer Research. Tamsin had recently lost her auntie to cancer and wanted to do something about it. There was a fantastic selection of cakes and Cornish cream teas on offer, which was welcomed by all those who were able to attend. Many of those that could not attend donated through her letterbox! Well done Tamsin and family. They raised over £1,000 for Cancer Research.



### The High Halstow Community Lottery

Our very own lottery goes from strength to strength each month with an average of over £300 going towards our Deposit Account held for High Halstow groups. Further details on how to join can be found on the HHCL website. Please Google “High Halstow Community Website” and this will come up in a link. We are in the process of purchasing a web domain name whereby you will be able to search for our website directly. Watch this space.

The Cricket Club applied for funding and the HHCL Funding Committee approved the application immediately. The Cheque was made payable to the Club was handed over before the draw.

Game	Venue drawn	Postcode	Area	Amount	Total won to date
June game (July draw)	Cricket Club	ME3 8TL	Medway Avenue HH	£1,000	£8,710
	High Halstow	ME3 8SJ	The Street HH	£140	

There are always fund raising activities going ahead in the village to raise money for either both Halls to keep them running and maintained, the Friends of St Margarets and W.I. for various charities and the new village sign they have commissioned.

If you would like your fund raising activity mentioned, please let us know by emailing: [Editor@HighHalstow.gov.uk](mailto:Editor@HighHalstow.gov.uk)

### NEED TO HIRE A HALL?

If you are interested in hiring either of the halls in the village for a function or meeting then please contact:

#### Memorial Hall

Angela Forward 01634 251756

#### Recreation Hall

Martin Mitchell 07752 682437

**\*\* Please do not call on a Sunday \*\***



**THINK BEFORE YOU PARK**

The extra time taken to reach an incident can cost lives!

**PLEASE MOVE YOUR CAR**



## High Halstow Hikers

At the start of July we changed our normal schedule to walk late morning on the second Saturday when there was a high tide on the Thames around 1pm. This meant that the 100m strip of shingle beach just to the east of St Mary's Bay that we were targeting for our barbecues looked particularly attractive in the sunshine as we approached it along the seawall.

Those among our group of a dozen that had not seen it before were as surprised as most people are at seeing the striking white beach of tiny seashell fragments for the first time. Most had taken disposable barbecues but one had earlier seen action at base-camp on Everest and another made use of the pieces of wood that form much of the flotsam along the shore.

Making sure they we collected the remnants of our fires and food we made our way back via the edge of the bay and along the landway across the marshes.

As we made the walk back to Brickhouse Farm where we had left our cars the weather became warmer and much more humid and made the return more demanding than the leisurely walk down to the river had been. But we were rewarded by the unusual sight of 5 shelduck ducklings diving repeatedly into a large round pond on the edge of the marshes with their mother in the centre of the pond surveying their training for the future.



The recently sheared alpacas at Coombe Farm also provided a striking picture as we neared the end of our 5-mile round trip hopefully shedding a few of the calories from the earlier lunch.

On Sunday 13<sup>th</sup> August our walk will start from the village of Oare near Faversham and will feature a walk along part of the Saxon Shore Way, include Oare Marshes Nature Reserve and views across the Swale and some picturesque hamlets inland. Parking should be on The Street at Oare close to where its junction with the Western Link. The adjacent Castle Inn has the postcode of ME13 0PY.

For most this is best reached by taking the Faversham exit from the M2, turning left along the A2 and following this out of Faversham until you reach the Western Link to the right.

**As ever all are welcome and queries can be made with Mitchell on [mitch.dowsett@btopenworld.com](mailto:mitch.dowsett@btopenworld.com) or 01634254428.**

### HIGH HALSTOW & DISTRICT GARDENING CLUB



## ANNUAL SHOW

RECREATION HALL

SATURDAY 26<sup>th</sup> AUGUST 2017

BENCHING OF EXHIBITS 09.30 TO 11.20 AM

SHOW OPEN TO PUBLIC AT 3 PM

TROPHIES PRESENTED AT 3.45 PM

ALL VISITORS WELCOME AFTER 3 PM

## High Halstow & District Gardening Club

July proved to be a very busy month for the club. On 6 July 20 of our members visited the beautiful gardens around The Mount, Haven street, Wainscott. It proved to be a glorious afternoon. The owners Susie and Mark spent time with us explaining the history of the gardens and house. The afternoon was rounded off by tea and a selection of home made cakes in the garden.

On Tuesday 11 July our speaker for the evening was Gordon Francis. Gordon surprised many of the members with the art of growing vegetables in the most unlikely containers and proved to us all that with care and patience almost anything can be grown. The evening was brought to an end with refreshments and raffle.

There will be no club meeting in August as we are holding our annual summer show. It's open to all, so if you wish to enter some of your produce, craftwork or photographs please collect an entry form from the village shop or Homeleigh nursery or email hhdgc@outlook.com for a copy. There will be refreshments a plant sale and raffle during the afternoon.

We are organising a coach trip to Kew Gardens and have some spare seats. The coach will leave the village hall at 09:00hrs and return at 16:00hrs on Wednesday 13 September. Entrance fee to Kew is £13 and the cost of the coach will be between £18 and £25 depending on the coach size. If you are interested please contact Marj Ives 01634 255398.

Happy gardening.



### Down to earth gardening tips

#### AUGUST Plant Profile: *Cosmos bipinnatus*

**Origin:** Mexico

**Type:** Annual

**Likes:** Well drained soil in sun.



**Features:** Lovely open flowers in white, pink or crimson and pretty finely dissected foliage. Gorgeous! Easy to grow. Bees like them.

**Care:** Deadhead daily to prolong flowering but leave a few flower heads on towards the end of summer to form seeds which you can collect. Keep the seeds in a paper bag in a dry place over winter and sow them next mid-spring. Seeds will germinate easily in temperatures 15-20 °C [60-70 °F]. Prick them out and plant deeply as

seedlings can grow tall very quickly. Plant them out when frosts are finished.

#### Some other things to do this month:

- How about building a simple bug home? There are plenty of images on the internet to give you ideas. All you need are some old flower pots, bits of drain pipes, pine cones, old bamboo canes, straw, logs – drill some holes in for bees – or anything like that.
- Keep dead-heading flowers – it only takes a minute and the plants will keep flowering for much longer. The flowers are trying so hard to produce seeds and you just keep spoiling their plans!
- Prune Wisteria now – cut off the wispy shoots to about five or six buds from the main stem.
- Plant autumn flowering bulbs such as Colchicum.
- Lightly trim lavender after flowering. Do not cut into old wood, just take off flowering stems and trim the new growth about 1 inch only.
- Keep watering and feeding plants. Use as much 'grey' water as possible. That's used water from washing dishes or yourself! Don't store grey water unless you have a proper recycling system which treats it to remove the bacteria. Install a water butt and collect as much rainwater as possible – I know that's very little in these parts!

For further information on the High Halstow Gardening Club please visit our village website.  
[www.highhalstow-pc.gov.uk](http://www.highhalstow-pc.gov.uk)

## Youth Club BBQ and School Sports Day



As is the tradition, the Youth Club finished the summer term with a BBQ on the Recreation Ground. The weather was kind and the evening was a great success. Most of the Youth Club members attended and also some visitors were invited: they all enjoyed hot dogs and fizzy drinks as well as fun and games outside in the sunshine. There were water balloons which proved extremely popular and also bubble blowing, but mostly the young people just ran around and played on the apparatus with their friends.



The Youth Club meets in the Recreation Hall on Tuesday evenings during school term time. It is for local children from age 9 upwards. Anyone interested in adding their child's name to the waiting list for membership should contact Mrs Chris Peek on 01634 252604 or email [chris.peek@lineone.net](mailto:chris.peek@lineone.net). It is a good idea for children to be added to the list when they become eight, so by the time they reach their 9th birthday they are likely to be near the top of the list.



**There is a waiting list to join Youth Club, but if you would like your child's name to go on the list please contact Chris Peek on 01634 252604**



For further information on the Youth Club please visit our village website.  
[www.highhalstow-pc.gov.uk](http://www.highhalstow-pc.gov.uk)

## Sport in High Halstow

### High Halstow Football Club

#### Manager Graham

HHFC have gone from strength to strength in the last couple of seasons. The team are seen here winning the Quarter Century Cup.

The team are also in the pre season Champions Cup in August. The league games start in early September. Home games are on a Saturday and kick-off is usually from 1.30pm.



### High Halstow Primary School – Sports Day

The children of High Halstow Primary School had great fun on Sports Day and their parents have kindly provided us with a few photos of the day.



*Above, left:* This is a photo of House captain Harriet Nolan and vice house captain Rubee Lucken holding the winning house cup Skylarks! Winners of 2017 sports day. *Above, right:* Roo Webster with his fantastic 3rd place certificate for his 100m sprint race.



For further information on High Halstow please visit our village website.  
[www.highhalstow-pc.gov.uk](http://www.highhalstow-pc.gov.uk)



*In parts of Scandinavia you would have a 23% chance of surviving an out of Hospital Cardiac Arrest. In the UK, it is around 7%. This is attributed to the fact that in those countries **CardioPulmonary Resuscitation** is taught in Schools, and therefore the general public are more confident and knowledgeable to carry out CPR if needed!*

## Let us all try and buck that trend

And learn to

# RESTART A HEART

On Tuesday 10<sup>th</sup> October 2017 come along to the **High Halstow Recreation Hall** Starting at 12 noon and running until 8pm, and receive tuition on when and how to carry out quality CPR.

**This is not just a 'Life Skill' it's a 'Life Saving Skill'**

The sessions are relaxed, very informal and **FREE**. Just drop in, have a chat and have a go. *Open to all ages*

**Hoo Peninsula  
Community First Responders  
South East Coast Ambulance Service**



**NEXT EDITION – September 2017**

Contributions for September should be sent by 24th August to:

Linda Atkinson via email: [editor@highhalstow.org.uk](mailto:editor@highhalstow.org.uk) or telephone: **07825 619 353**

Editor – Linda Atkinson / Designer – Natalie Kyne-Dinsdale

Published by High Halstow Parish Council  
Printed by Smart Print Services (01634) 727 215