



High Halstow TIMES

Home of the Heron



September 2016

Macmillan Coffee Morning

This years Macmillan coffee morning will be on Friday 30th September. As in previous years Ann Smith and her band of willing helpers will be hosting a coffee morning in the Memorial Hall, with tea, coffee, cakes, buns, biscuits and a Ploughmans lunch. There will also be much more on offer for this very worthwhile charity. Please try and keep the date free.

WE ARE
MACMILLAN-
CANCER SUPPORT



Birthday Celebrations

High Halstow Women's Institute will be celebrating its 60th Birthday in May 2017.

As part of the celebrations we would like to invite past members for any memories of the Institute.

Do you have any photographs of the events such as annual May Fairs? Were you a May Queen or an attendant?

At the very first meeting on 1st May 1957 forty six members joined. We now have 26 members and it would be lovely to boost the membership for this special anniversary.

Meetings take place in the Memorial Hall on the first Wednesday of the Month at 7.30. Our next meeting is on 7th September and the Speaker is Lucy Allan and her subject is 'First Stunt Lady'.

If you have any memorabilia please contact Crystal - 01634 251849 or June - 01634 250105

High Halstow Hikers

Seventeen HH Hikers did a local walk of around 5 miles on a lovely Sunday morning in mid-August. From the village hall we walked to Deadman's Corner, across the fields to Clinch Street, back to Forge Common and then into Northward Hill RSPB reserve. At the other side of the woods we took in the view across the old radio station and the marshes to the Thames and Essex. The information board there still shows a long red line to indicate the boundary of the proposed "Cliffe Airport" that was a candidate for the 3rd London airport in 2002 (a decade before Boris showed interest); it emphasizes what devastation to our environment would have been caused. From there we walked down through Bromhey Farm, past Eastborough Bungalow and along the ridge towards the West to take in the wonderful views across Cooling Court and Spendiff. Walking back along the permitted footpath through Wybourne's Farm to the village we all reflected on just how the splendid views of the countryside around High Halstow can match almost all that we see on our hikes further afield.

In September the 5.5 mile walk will be around Addington and Offham (famous for its quintain) on Sunday 18th again starting at 10.00. The walk will begin at the Angel Inn, Addington (ME19 5BE). Please park tightly in the adjacent Trottscliffe Road.

All are welcome on these walks.

Any questions please contact Mitchell on mitch.dowsett@btopenworld.com or 01634-254428.

Local Groups - Information

We would like to put together over the next couple of months an insert of the local groups within the village

This is your time to let is know what you are about, when and where you meet etc. We would like to update the website as well so if you running one of these groups please let us have the details and we will do the rest. You can see what we have already said about your group on <http://highhalstow.org.uk/local-groups>

It is your chance to promote and seek new members. If you could let us have the details at editor@highhalstow.org.uk

"Seated Exercises"

Thursday Morning 11:30am - 12:15pm

£4 per session

This class is all about upper and lower body movement. If you have a problem with balance, are an older adult or are in rehabilitation then this is the class for you. All the exercises are completed using a chair in a relaxed and fun atmosphere. Equipment such as light weights, resistance bands and foam balls are used to move to music.

Come and join us...No Lycra Necessary!!!

*Phone Wendy (255366) or
Ann (251914) for more info.*

How Far Back Do You Go?

It was mentioned to me recently that the High Halstow Times is approaching its 50th Birthday. That's approximately 550 editions (11 per year) of HH news, letters, updates and the occasional dog-poo complaint.

The oldest edition I have in my possession is from December 1983 in which Mrs Rachel Lapthorn is thanked for her 15 years of hard work as Editor and Printer. This would certainly seem to confirm that the High Halstow Times is at least 48 years old.

It would be great to find any earlier copies which are still in existence and to scan them and store them electronically for future generations and for people to look-up online. We might also reproduce certain pages in future editions.

If you have any earlier editions, please get in touch at editor@highhalstow.org.uk or 01634 250911

Carl Mitchell
HHT Editor

Kings Kitchen



A Coffee and Cake Café
for the Whole Village.

Open 10.00am - 1.00pm
every Tuesday
in the Memorial Hall.

Why not come in and enjoy a
cuppa and a chat.

A warm welcome awaits you.

Quiz Night

The profit from the July quiz night has been sent to The Motor Neurone Association and was nominated by The Songbirds.

As previously advised there was no quiz in August, but we are back at the end of September when The Hot Flushes will nominate the charity.

A Huge Thank You

Allaying some people's concerns - no they were not convicts nor offenders doing their "community service". They were employees from the National Grid LNG plant, Grain volunteering to do projects within the community.

We were approached by Chelsea Malcolm (an ex resident) from National Grid earlier in the year who was to organise a community volunteer day and picked High Halstow as one of this year's recipients. A list of work was prepared for her from which they chose to undertake.

So at 8.30 on Friday 26 August nineteen individuals arrived to do the following tasks.

1. Repaint the Memorial Hall externally
2. Prune the trees in the churchyard and remove the ivy from the walls and old gravestones
3. Replace wooden posts around the perimeter of the village car park
4. Make a sign for the Village Hall and adjust the internal main hall sliding doors

At 3.30 they completed their tasks and left leaving the village looking better for it.

Thanks go to LNG and their willing band of volunteers



Members of the volunteer group from The National Grid, Grain

The Village Shop

Opening Hours

Monday – Saturday 7am – 8pm

Sunday 8am – 5pm

Telephone number: 01634 254561

UPDATE ON THE HIGH HALSTOW COMMUNITY LOTTERY FUND

We received a very positive response for the idea of the new Lottery.

From those that enquired to play, we now have a High Halstow Community Fund Award Committee. The Committee have agreed on the way forward processing the prize money and the monies raised for those groups/organisations who apply for funding. By law at least 20% of monies received in each draw must go to charity.

Players requesting to play who do **not** reside in High Halstow would be welcome to participate. There is no limit to how many tickets anyone can buy. One ticket £10, two tickets £20, three tickets £30 etc. Your post code will be entered twice, three times etc.

The draw will take place in The Red Dog pub in front of witnesses providing security and fairness for all. The draw will be on the nearest Saturday to the 7th of the month. These 7 (approx.) days will allow administrators to confirm what monies have been received and enter those post codes into the draw.

£10 per ticket paid by Standing Order to reach bank by 1st of each month.

Payment could also be by payment by App on your phone or online

Your ticket number will be your Post Code and House number/name

The number of players determines the prize fund.

NO CASH PLAYERS

LAUNCH DATE 1 OCTOBER 2016

Interested? Then contact the team by email HighHalstowCL@gmail.com for an application form. At time of going to print we are only 2 or 3 days away from receiving the Bank Account and Sort Code numbers. The wheels of red tape roll extremely slowly.....

The National Lottery

On average we each spend £416 on playing the National Lottery and buying scratchcards every year. Given that the odds of winning the jackpot are a whopping **one in 14 million**, most of us are arguably wasting our money.

The Health Lottery

This lottery was launched in 2011 and gets its name from the fact that 20% of the money raised goes to health-related charities. You buy a £1 ticket at a retail outlet – they are sold in numerous supermarkets and corner shops – and you stand the chance of winning up to £100,000. Your chances of winning the jackpot are **one in two million**.

High Halstow Community Lottery

As we will be licenced to run a **Small Lottery** the highest prize must not exceed £20,000 (per draw) but players will have more chance of winning because the amount of players is drastically reduced. We already have approximately 100 “promises” from potential players. 100 players = £1000 received funds. £750 PRIZE FUND £250 charity account. This would mean these potential 100 players will have 1 in 100 chance of winning. We are expecting that player numbers will gradually increase and therefore the prize fund will increase.

(NOTE: information obtained from Medway Council (2011 census) is that we have 734 dwellings in High Halstow, 896 All Hallows, 3,964 Hoo, 662 Grain and 461 (combined) in Stoke).

*Please note that this is a completely independent and private venture.
It is not being run by or being run on behalf of the High Halstow Parish Council.*

Gamble Responsibly

What is responsible gambling?

Responsible gambling means staying in control of how much time and money we spend gambling. Whether you are buying a lottery ticket or scratch-card, placing a bet, playing poker or bingo, or playing on a gambling machine or casino game, gambling responsibly means treating the activity as just one form of entertainment in a balanced lifestyle. Just like with other forms of entertainment, gambling is a form of expenditure, and responsible gambling means not spending more money or time than we can reasonably afford, keeping in mind all our other responsibilities in life.



High Halstow Pre-school

Modular Building, Primary School, Harrison Drive,
High Halstow, Rochester, Kent. ME3 8TF
01634 255088

Proprietor/Manager Mrs Anita Russell BA (Hons), EYPS

- ✓ 'Outstanding Provider' Ofsted
- ✓ 2009-10 Extensive Outdoor Facilities
- ✓ Excellent Links with Primary School
- ✓ Friendly, Qualified Staff
- ✓ Affordable Childcare

Open Weekdays, term time only
8.45 am - 3.30pm

Morning, lunch, afternoon and all day sessions available.

Children are funded for 5 free sessions the term following their third birthday.

Don't take Ofsted's word that we are an outstanding provider, come and see for yourself.

Ring 01634 255088

High Halstow 2016 Photo Competition



After the huge success of last year, the HH Photo Competition returns for it's 8th year. Pictures can be emailed to photos@highhalstow.org.uk and can be from a camera, phone or any other device. The categories are the same as last year:

Under 16's - 1st, 2nd, 3rd
Flora & Fauna - 1st, 2nd, 3rd
People & Places - 1st, 2nd, 3rd
Overall Winner

Winners will receive a prize, certificate and their photo included in the HH Calendar.

Closing date for entries is 31st October 2016.
Entries can be emailed to
photos@highhalstow.org.uk

You don't have to be David Bailey to enter, and pictures from mobile phones as well as camera's are all acceptable.

High Halstow Arts & Crafts Village Market

Handmade Cards & Jewellery,
Tattoos, Hand Bags,
Gifts, Make-up, Collectables,
Cakes and Treats.
Refreshments available.

The Memorial Hall

10am - 2pm

Sunday 11th September

Sunday 9th October

Sunday 13th November*

*12noon - 3pm

Sunday 11th December

Come and support our village event!

Cornish Holiday Cottage Let

A fabulous 300 year old cottage, recently fully refurbished with open fire place, fully fitted kitchen, modern decor and off-road parking, benefitting from two well-furnished bedrooms (1 double and 1 twin).

The cottage is in the hamlet of Trewint, only a mile away from Altarnun, one of the most beautiful villages in Cornwall. The Rising Sun Inn just outside the village is

a 16th century award-winning traditional pub, selling locally produced ales and fresh and innovative meals in a great atmosphere. The cottage is ideally placed for discovering the coastline of Cornwall.

- Electric wall heaters with open fire
- Electric oven and hob, microwave, fridge, dishwasher, TV with Freeview, DVD, WiFi, selection of books, games and DVDs
- Fuel, power and starter pack for open fire (October-March) inc. in rent
- Further fuel for fire available to purchase locally
- Bed linen and towels inc. in rent
- Off road parking for 1 car
- Lawned garden with furniture opposite cottage across road
- One well-behaved dog welcome
- Sorry, no smoking
- Shop and pub 1 mile.

The cottage is advertised with Sykes Cottages (<http://www.sykescottages.co.uk/cottage/Cornwall-Fivelanes/Laburnum-Cottage-935455.html>)

Alternatively I live in the village and will be able to offer a discounted rate if you contact me directly on: Andy 01634 936095
Mobile: 07958 604268



High Halstow Village Hall

September will see the final stages to Phase Four with the building work completed at the time of going to press. The decoration will be carried out in September with the room available to hire probably from 1st October. Next months HHT there will be photographs of the new available space to hire
Thank you all for your continued support with the refurbishment of the hall.

Thank You Thank You Thank You

The Hall Committee would like to say a big thank you to the Chelsea Malcolm and her band of volunteers from the National Grid .

Users will notice the slide doors inside slide properly for the first time for many a year and that a new Village Hall sign will be in situ very shortly. It was such a kind offer for this work to be carried and very much appreciated by all concerned.

Restart a Heart Week 18th October

The Village Hall Committee are pleased to support the above where anyone in the village can come along to be shown how to use the defibrillator. Details to be found in this month's HHT.

Quizathon 14th October 7:00pm

The next Quizathon at the Village Hall is October 14th. To book your team please contact Margaret on 244203, entry fee £3.00 per person.

Come and Meet Your Parish Councillors

Chris(tine) Watson and Gary Jerreat, two of your Parish Councillors, will be at Kings Kitchen in the Memorial Hall on: Tuesday 13th September 2016 from 10.30 – 12.00pm



and every 2nd Tuesday in the month.

Come and tell us your problems or find out about projects we are undertaking.

If we can't answer your questions there and then we will get back to you.

High Halstow Parish Council.

Dog Walkers

Our rights of way and green spaces are for us all to enjoy. Please be aware that if you are exercising your dog it should be under control at all times, and it is your responsibility to clear up it's mess afterwards. Dog fouling is an eyesore, a serious health hazard and an environmental crime. Please clean up after your 4-legged friend.

High Halstow Women's Institute

Present

An Evening of Musical Variety with renowned harpist

Margaret Watson

"Life on a Harp String"



At

High Halstow Village Hall

7.00 for 7.30 start on Friday 21 October 2016

£6.00 entry which includes refreshments.

Tickets from Crystal 251849 or

June 250105 or at the door on the night.



South East Coast Ambulance Service **NHS**
NHS Foundation Trust



Restart a Heart Campaign

Free CPR demonstration and practice for all

Would you, your family and friends like to be involved in a Europe-wide initiative which teaches the skills to save a life?

If the answer is 'yes' then your local ambulance service staff are willing and able to help you get involved.

As part of the Restart a Heart campaign, members of our staff will visit your village to demonstrate how to carry out basic CPR (Cardiopulmonary Resuscitation), **FREE** during the week of 12-18 October. You will have the opportunity to practice CPR, see how to use a defibrillator, to gain the confidence to do it effectively and help save a life.

More than 30,000 people suffer cardiac arrests outside of hospital in the UK every year. If this happens in front of a bystander, who starts CPR immediately before the arrival of the ambulance, the patient's chances of survival double.

By linking with the Resuscitation Council's European Restart a Heart Day and the British Heart Foundation, we will provide hundreds of members of the public with the skills they need to help save a life.

High Halstow Recreation Hall (meeting room)

18 October 2016.

Commencing 0900hrs until evening

Steve Joyce
Volunteer Area Coordinator
Community First Responder
South East Coast Ambulance Service

High Halstow Gardening Club Annual Show

Members and visitors enjoyed the Gardening Club's Annual Show held on the bank holiday Saturday. Despite a reduction in vegetable, fruit and flower exhibits this year due to the dry weather, they were varied and of a high standard. Exhibitors in the cookery section had defied the hot weather and produced an array of impressive cakes, flans, etc. We had a good display of beautiful floral arrangements with a variety of arts & crafts objects.

The refreshments were appreciated with the raffle well supported with a first prize of a £25 garden voucher donated by the Co-op Funeral Service. The show was opened and prizes were presented by Linda Atkinson, parish councillor.

Details of the full results are given below:

SECTION 1 Vegetables	Cup for most points in section	Dusty Miller
	Terry Clarke Trophy	Jane Ovenell & Karol Tompkins
	Les Shallot Cup	Dusty Miller
SECTION 2 Fruit	Plaque for most points in section	Dusty Miller
SECTION 3 Flowers & Pot Plants	Shield for most points in this section	Rosemary Collins
	Plaque for best Pot Plant	Wendy White
	Cup for best Chrysanthemum	Rosemary Collins
	Hubbard Cup for best Dahlia	Christine Wilson
SECTION 4 Domestic	Mary Follett trophy for most points in section plus £5 voucher	Cheryle Hassell
SECTION 5 Floral Art	Vase for most points plus £5 voucher	Hazel Kilburn
	Cup for best exhibit in this section	Hazel Kilburn
SECTION 6 Arts & Crafts	Dennis Follett trophy for most points in section	Wendy White
SECTION 7 Novelty	Potato grown in a bucket, heaviest yield £5 voucher	Dusty Miller
MOST POINTS IN SHOW	Cup and £5 voucher	Dusty Miller
BEST EXHIBIT IN DOMESTIC, FLORAL ART, ART & CRAFTS	High Halstow Gardening Club Plate	Wendy White
PRESIDENT'S ROSEBOWL		Rosemary Collins
BEST MEMBER'S GARDEN	IV Uden Shield plus £10 voucher	Robert and Alison Wells
BEST HANGING BASKET	Hillman Cup	Robert and Alison Wells
BEST CONTAINER	Elizabeth Harris Shield	Robert and Alison Wells
TOP TRAY 1ST	£10 seed vouchers & Certificate	Dusty Miller
TOP TRAY 2nd	£5 seed vouchers	Rosemary Collins
TOP TRAY 3rd	£3 seed vouchers	Neale Chapman

TOP VASE 1st	£10 seed vouchers & certificate	Rosemary Collins
TOP VASE 2nd	£5 seed vouchers	Hazel Kilburn
BANKSIAN MEDAL		Dusty Miller
BEST EXHIBIT VOTED BY VISITORS	Bottle of wine	Hazel Kilburn



*A fusion of functionality,
good taste and style...*

Beautiful Kitchens Bedrooms & Bathrooms

We have been providing homes across the Hoo Peninsular with bespoke kitchens, bedrooms and bathrooms for over 30 years. We take care of the whole process - from creating a design that you will love, to all the preparation and building work, electrics, plumbing, tiling and fitting. We pride ourselves on our quality workmanship and exceptional attention to detail.

Tailor made for your needs

Call us for a free design consultation on
01634 222 327 or 07889 028 889.
or email us at info@beautifulkitchens.co.uk

Checkatrade.com



Dates for Diary

Every Monday:

Bumps & Toddler's

09:00 Village Hall

Glowfit

18:30 Village Hall

Every Tuesday:

King's Kitchen

10:00 Memorial Hall

Bell Ringers

19:30 St Margaret's Church

Every Wednesday:

Stay & Play

09:00 Village Hall

Every Thursday:

Sugar Babes

19:00 Memorial Hall

Every Saturday:

Karmann Dancers

09:00 Memorial Hall

Karate

09:30 Village Hall

Every Sunday:

Déjà Vu Spiritual Centre

18:30 Village Hall

Every 4th Wednesday:

Friendly Club

14:00 Memorial Hall

Other Dates:

Sunday 4th: Family Service

09:30 St. Margaret's Church

Tuesday 6th: Gardening Club

20:00 Memorial Hall

Wednesday 7th: Women's Institute

19:30 Memorial Hall

Wednesday 14th: Parish Council

20:00 Memorial Hall

Sunday 13th: Arts & Craft Fair

10:00 Memorial Hall

Sunday 18th: High Halstow Hikers

Details in HHT

Sunday 18th: Family Service

09:30 St. Margaret's Church

Wednesday 21st: Whist Club

14:00 Memorial Hall

Friday 30th: Quiz Night

20:00 Memorial Hall

Local groups, please let us know the dates of your meetings/events for the coming year so we can include them in the HHT and on the website.

Off to University?

The High Halstow Relief in Need charity (Reg No. 250996) has a limited number of small bursaries available to students going to University for the first time.

Students who started last year and were able to apply for a bursary may also apply.

The scheme is available only to students living in the parish of High Halstow at the time of application.

Closing date is 30th September 2016 and applications received after that date will not be considered. In your letter of application please state your name, address, telephone number *and email address*, the universities you have applied for and the length of your course. *A copy of your placement offer will be required* before the bursary can be given. No appeal is available for unsuccessful applicants.

Please apply in writing to: The Chairman, High Halstow Relief in Need charity, The Rectory, 2 Cooling Road, High Halstow, Rochester, ME3 8SA. PLEASE mark 'Bursary Application' on the front of the envelope.





Based in High Halstow
Contact Jade
07708 394979



Permanent Makeup is an advanced technique used to apply coloured hypoallergenic pigments into the dermal layer of the skin. The pigments are made from natural minerals making enhancements look very natural that can last for years but will fade over time.

Treatment areas:

Brows: Eyebrows frame the face, with the right shape & colour brows it can make you look years younger

Eyes: It can be difficult to apply eyeliner correctly & make it last all day. Define your eyes with eyeliner or lash enhancement.

Lips: Define & enhance your lips with a gorgeous lip liner, blush or full lip colour.

Book a free consultation to see how Permanent Makeup can help you.

www.serenitypermanentmakeup.co.uk

Access free WiFi in all Medway Libraries

All Medway libraries are now offering free internet access following a £70,000 project to further improve the service.

Library goers can now take advantage of free Wi-Fi in any council-run library, making the downloading of free eBooks and eAudiobooks on site, of which there are more than 10,000 available, easier and cheaper for customers using their own smart phones and tablets.

It also means people can access Ancestry and Access to Research from their devices, resources which had previously only been available via library public computers. Now, those interested in finding out about family history or published academic research on a wide range of subjects, can do so using the Wi-Fi service.

The project, funded by Arts Council England, has provided 16 of 17 libraries and community hubs with free internet access, with Walderslade Hook Meadow library Wi-Fi funded by BT and Barclays. BT and Barclays will be running coding clubs for youngsters in Medway libraries throughout the summer.

Library goers will need their library card to access the free services, or those without a library card can get online using a guest account.

Medway Council's Library Service Manager Duncan Mead said: "We are pleased to be able to offer customers the use of free Wi-Fi in all Medway libraries, and I'd like to thank Arts Council England, BT and Barclays for making it possible. A majority of our customers now have smart phones and tablets, so we hope the free internet service will enhance their experience when using our libraries and community hubs."

All Medway libraries continue to offer the use of public computers.

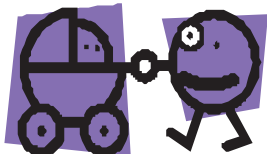
Considerate Parking

Mums with babies and older people are finding it more and more difficult to walk around the village due to cars parked on the pavement. They are having to walk into the road because of this, which is dangerous and unnecessary.

Please think about this before you park your car/van and try to be a little more considerate.

Thank you

High Halstow Parish Council



More Suitcases Wanted

Thank you to those who have donated surplus large suitcases for storing Dramarama costumes.

More are still required so if you are able to help please contact June Collins on 250105 to arrange collection.

Get Fit, Having Fun in the Dark.

High Halstow Village Hall



GLOWFITT

Easy to follow dance moves to club tunes in the dark with disco lights and glowsticks!

No need to pre-book, just turn up! Mondays at 6.30pm at the High Halstow Village Hall

For more info like our Facebook page!

f JR Fitness 07746082182

September

September is the ninth month of the year in the Julian and Gregorian Calendars and one of four months with a length of 30 days.

September in the Northern Hemisphere is the seasonal equivalent of March in the Southern Hemisphere. In the Northern hemisphere, the beginning of the meteorological autumn is on 1 September. In the Southern hemisphere, the beginning of the meteorological spring is on 1 September.

September marks the beginning of the ecclesiastical year in the Eastern Orthodox Church. It is the start of the academic year in many countries, in which children go back to school after the summer break, sometimes on the first day of the month.

September (Roman month) (from Latin septem, "seven") was originally the seventh of ten months on the oldest known Roman calendar, with March (Latin Martius) the first month of the year until perhaps as late as 153 BC. After the calendar reform that added January and February to the beginning of the year, September became the ninth month, but retained its name. It had 29 days until the Julian reform, which added a day.



Jonathan Computers

Freephone: 0800 321 38 79

Mobile No: 07905 120 557

Email: sales@jonathancomputers.co.uk



Computer problems solved quickly and cheaply...with a friendly face

And Best of all I come to YOU!!!!

- ☐ Dramatically Speed up Slow PC's
- ☐ Fix Broadband connection issues
- ☐ Install Windows 10 or Fix Install Issues
- ☐ Make Win 8/8.1 look like XP, Vista or 7
- ☐ Virus & Malware Removal
- ☐ Data Transfer & Recovery
- ☐ NO 'Call Out' Charge
- ☐ New Economy Pc's & Laptops



NEW!!!!!!
Windows 10™

From 8th April 2014 All Support for ALL XP™ Versions has discontinued!!!!

If you are using a computer with Windows XP on

YOU ARE AT SEVERE RISK!!!!



**I Am Based In High Halstow
So Can Be Quick To Respond!**

01474 879878

(Gravesham Office Number)

St. James' Sure Start Children's Centre

For families with children aged 0-5 years



Stay and Play
at High Halstow Village Hall
Wednesday
9am-10.30am

For children 0-5 years.

A wide range of activities for children and adults to get involved with including creative activities, physical activities and exploration.

Fresh fruit and drinks are available.

IF YOU WOULD LIKE FURTHER INFORMATION, PLEASE CONTACT:

St. James' Sure Start Children's Centre

St. James' Church of England Primary Academy High Street Isle of Grain ME3 0BS

01634 270341 E: childrenscentre@stjames.medway.sch.uk

www.stjamesisleofgrain.org.uk

Sure Start Children's Centres



Need to Hire a Hall

If you are interested in hiring either of the halls in the village for a party, function or meeting please contact:

Memorial Hall - Angela Forward 251756

Village Hall - Crystal Wakefield 251849

**** Please do not call on a Sunday ****

Your Parish Councillors

George Crozer, Chair 01634 250286

e.mail: george@highhalstow.org.uk

Christine Watson, Vice Chair 01634 256529

Martin Andrews 07984 791029

Linda Atkinson 07825 619353

Ray Collins 01634 250105

Gary Jerreat 01634 253999

Bill Khatkar 07775 668620

Carl Mitchell 01634 250911

Brian Williams 07908 006448

e.mail: bdwilliams9@hotmail.com

Your councillors may also be contacted through the Parish Clerk:

Mrs Roxana Brammer 01474 871269

clerk@highhalstow.org.uk

The next Parish Council meeting is on Wednesday 14th September at 8pm in the Memorial Hall, all are welcome.

Readers Letters

Dear HHT,

Hello my name is Enya Gibbs, I moved to High Halstow before my 1st Birthday, so as you can imagine I've made some wonderful friends from pre-school and High Halstow Primary, but it was the journeys to and from school that I met my dearest friend Dennis Follett who sadly and unexpectedly I had to say goodbye to last December.

Dennis would always be standing by his beloved garden in the morning to wave me on my way with a brief chat and then would always be there after school to ask what I had done through the day. We would have many discussions mostly about gardening, and all stories about when he was younger. He took great interest in the sport that both my sister Lilly and I was into, keeping a scrapbook when we appeared in the newspaper, and was more than proud when Lilly received a scholarship to Cobham Hall, a place that Dennis knew well working on the home turning it into a school in 1950's. We would always have discussions about what school I would go to, and he would say "You will look smart in any uniform no matter what secondary school you go to" He was so proud of me when I got a Grammar School place but I didn't get a chance to tell him I was also going to Cobham for it was at the time he became very unwell.

This September I start a new chapter in my life, Secondary School, I am very sad to go my separate way from my friends although I'm sure I will keep in contact with them. But I would like to take this opportunity to say thank you to all my teachers, especially Miss Towell who along with Dennis gave me the confidence to go after my dreams. And I know that Dennis will be watching over me all the way, and would be very proud of how smart I look in my new uniform, a uniform he had asked his lovely family to provide for me! Thank you my friend, you will always be a part of my life with a picture placed in my inside pocket.



Dear HHT,

Whist Group Starting 21st September.

Last month you will have read my invitation to have a chat in the Memorial Hall on Monday 15th August about starting a Whist Group. The response was good but with some saying they would not be able to attend that particular meeting. Therefore on the day I took a book and a little radio to occupy myself in case no-one turned up. I need not have worried as others did. We had a thoroughly enjoyable time and concluded it was a viable enterprise and the following decisions were agreed:

We would meet monthly, the sessions to last one and a Half hours.

The cost per person to be £2, any surplus above the Hall hire cost to be donated to the Hall (a registered charity).

The first session will be from 2pm on WEDNESDAY 21st SEPTEMBER for both those who can play and complete novices.

I would like to thank the Hall Committee for their encouragement in attempting this.

So, do please come and bring your "lucky pencil".

Christine Wilson

Next edition October 2016; Contributions for October should be sent
by 26th September to:

Carl Mitchell, 8 Marsh Crescent, High Halstow ME3 8TJ
or e.mail to editor@highhalstow.org.uk