



High Halstow TIMES

Home of the Heron



November 2016

High Halstow Community Lottery First Draw

The very first draw was held in the Red Dog public house and the winning ball no 7 and was drawn from the box by Cathy the hard working Bar Maid. The winner was therefore No.7 on the list of players drawn from the High Halstow Community Bank Account.

The First Winner won £500 and was presented with her cheque by the HH Community Lottery Committee. We had estimated the first prize to be £450, but with some late entries the prize grew to a whopping £500. The winning postcode was ME2 3LL.



**We have an estimated PRIZE fund of £520 for our November draw
HELP US TO GROW THE PRIZE FUND TO £20,000 per month.
Which would mean £2,500 per month to local causes**



If you want to join in the fun and help raise money for LOCAL causes all you need to do is set up a Standing Order or payment to our Lottery bank account for £10 per ticket quoting your post code and door number as your reference. Multiple tickets possible

Cut off date 1 November 2016

Payee: High Halstow Community Lottery

Account No: 21507826

Sort Code: 40 43 44

Reference: Your post code and door number/name (THIS IS VERY IMPORTANT) [e.g. ME39QZ-12]

Payments must be received by 1st of each month to be drawn by 7th.

No payment received – no ticket.

Please note that this is a completely independent and private venture. It is not being run by or being run on behalf of the High Halstow Parish Council.

Odds – National Lottery 4 million-1 - High Halstow Community Lottery 70-1 (expected)

Photographic Competition & HH 2017 Calendar

The winners of the 2016 HH Photographic Competition will be announced at the Parish Council meeting on Wednesday 9th November from 8pm in the Memorial Hall. The winners will be presented with their prizes and HH 2017 Calendars. Please come along and see the winning pictures and order your HH Calendar containing all the winning pictures. Calendars will be on sale in the Village Shop from mid-November.

Need to Hire a Hall

If you are interested in hiring either of the halls in the village for a party, function or meeting please contact:

Memorial Hall - Angela Forward 251756

Village Hall - Crystal Wakefield 251849

**** Please do not call on a Sunday ****

**Service of Remembrance, Sunday 13th @ 10:15am
St. Margaret's Church**

High Halstow Hikers

Heavy rain was predicted for the start of our walk in October. Although this understandably discouraged a few, 14 of us started the walk from Brickhouse Farm on the main Allhallows Road. We were rewarded at the start of the walk by Mike and Jackie's excellent sloe gin and being suitably warmed we set off for a walk around the marshes and sea wall to the north of St Mary's Hoo. We were pleased to find that no rain actually occurred. The higher ground at the start of the walk from the end of Shakespeare Farm Road gives excellent views of the estuary to Canvey Island and along to Southend. The route from Coombe Farm to the edge of the marshes provides a 100-yard-wide gentle grassy descent where an occasional heron floated across and buzzard circled while being mobbed by crows. From the seawall the cries of the curlew and redshank provided classical background noise with large flocks of shelduck out on the incoming tide. The approximately 400-yard length of seawall that has been taken away to allow the river to flood the marshes just to the west of Egypt Bay was further than were prepared to go but those that have visited it recently commented on just how impressive the changed environment is. We returned around the unploughed edge of a number of fields to a little more sloe gin. It is amazing to think that we saw nobody else on our 6-mile 2.5 hour walk even though the route took us alongside one of the most famous rivers in the world.

The November walk will start at 10.00am on SATURDAY 12th November (to avoid Remembrance Day) from the Library Car Park, Marden, TN12 9DP, that sits on the south side of the High Street. This is reached by following the A229 through and beyond Maidstone, taking the B2079 a couple of miles south of Linton and then turning right into the High St in Marsden. The walk is flat and about 6 miles long. It has been recommended as suitable by the Marden Walking Group who describe it as their Diamond Jubilee walk having first walked it in 2012.

As ever all are welcome and queries can be made to Mitchell on 01634-254428 or mitch.dowsett@btopenworld.com.

HH Gardening Club

We had an entertaining talk from John Beckham on the varieties and diversity of our garden birds. He gave examples of enticing different birds into our gardens with some ingenious devices to ensure food is reserved for small birds.

The talk on 8th November will be by Maureen Rainey on 'Any Garden can be Wildlife Friendly' to be held at the Memorial Hall at usual time of 8.00pm. Visitors are always welcome.



Food Demonstration & Tasting

If you missed the Harpist you really missed a great evening. It was very well attended and everyone thoroughly enjoyed the evening with many compliments on the excellent refreshments. Many thanks to all that came to support our fund raising event.

We had an excellent speaker last month on curiosities of London. We also had several guests, and 3 ladies joined us with the hope that a couple more will also join.

On the 26th we are having a minibus trip to Tenterden for shopping at their High Street Christmas Fair.

Our speaker at our next meeting is Julia Davis who will be giving a food demonstration with tastings. This is on Wednesday 2nd November in the Memorial Hall starting at 7:30. Come as a guest and pay just £1:50 on the door, we would love to see you.

HH WI

Time to remember our hero's of yesterday and today

A service of Remembrance on

● Sunday 13th November at ●
10:15 am to 11:15 am, please do
join us and stay for some tea or
coffee after the service.

St. Margarets's Church High Halstow

Come and Meet Your Parish Councillors

Chris(tine) Watson and Gary Jerreat, two of your Parish Councillors, will be at Kings Kitchen in the Memorial Hall on: Tuesday 8th November 2016 from 10.30 – 12.00pm



and every 2nd Tuesday in the month. Come and tell us your problems or find out about projects we are undertaking. If we can't answer your questions there and then we will get back to you.
High Halstow Parish Council.

Resume Of The Parish Council Meeting Held On 12 October 2016

The meeting held on 12th October was attended by 6 parish councillors and 5 members of the public. Two councillors were ill and another was on holiday.

Our new councillor Linda Atkinson was co-opted onto our planning committee. This will help tremendously those councillors who investigate planning applications in advance of meetings. She was also appointed as our second representative on the Kent Association of Local Councils Medway Area Committee.

Part of the fence round the cricket pitch has been broken again. The closeness of the youth shelter may have something to do with it and it was suggested it should be removed. However it was known that it was appreciated by members of the Youth Club. Cllr Williams was asked to put forward some proposals. It's worth pointing out that the constant expense of repairing the fence ultimately falls on the residents of the village.

Nothing major was identified in the safety report on the play equipment. The repair/replacement of the basket on the cantilever basket swing is in hand. This is one of the items installed by Medway Council some years ago under a national grant scheme and we're having to contact the manufacturer.

Hazel Stockbridge's son has asked if he can plant a tree in memory of his father on Forge Common. Naturally, it will be a hazel.

We heard that the upper room in the Recreation Hall is now ready for hire.

Chris Peek reported that sadly the Youth Club session the previous night had had to be cancelled due to the lack of adult volunteers. If you feel you can join the pool of volunteers, please contact her. Chris also reported that Relief in Need had just paid out the student bursaries for the year.

The next meeting will be held on Wednesday 9th November in the Memorial Hall at 8 pm, when the winners of the photographic competition will be announced and presented with their prizes. The You are all welcome to attend. If you are coming for a specific item on the agenda, it is important that you introduce yourself to the Chairman and Clerk before the start of the meeting.

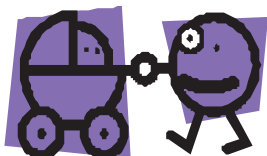
Considerate Parking

Mums with babies and older people are finding it more and more difficult to walk around the village due to cars parked on the pavement. They are having to walk into the road because of this, which is dangerous and unnecessary.

Please think about this before you park your car/van and try to be a little more considerate.

Thank you

High Halstow Parish Council



Your Parish Councillors

George Crozer, Chair 01634 250286

e.mail: george@highhalstow.org.uk

Christine Watson, Vice Chair 01634 256529

Martin Andrews 07984 791029

Linda Atkinson 07825 619353

Ray Collins 01634 250105

Gary Jerreat 01634 253999

Bill Khatkar 07775 668620

Carl Mitchell 01634 250911

Brian Williams 07908 006448

e.mail: bdwilliams9@hotmail.com

Your councillors may also be contacted through the Parish Clerk:

Mrs Roxana Brammer 01474 871269

clerk@highhalstow.org.uk

The next Parish Council meeting is on Wednesday 9th November at 8pm in the Memorial Hall, all are welcome.



Forever Talking



Hi everyone my name is Jaime and I'm a local Forever Living Business Owner.

With products ranging from Nutritional Supplements to Beauty, Personal Care and our famous Aloe Vera Drinking Gel, there's something for everyone, even your animals!

Try before you buy! Why not try one of my product baskets?
Or request a brochure!

Quote HH1 to receive a free gift when you place an order.

You may even be interested in starting your own business?
Would you like an extra income?
Do you like to travel?

This is all possible and I can help you achieve this.

Contact me for details
forevertalking@flp.com
07740395783

or find me on fb Jaime Tomlinson or Forever Talking by Jaime
www.forevertalking.flp.com



Be Bright, Be Seen

With the clocks going back next weekend Medway Council's road safety team is urging local people to take care on the journey to and from school and work.

Within a few weeks we'll be plunged into darkness at the start and end of the working day, so it's time to prepare to be bright and be seen this winter.

Here are some top tips for pedestrians, motorists and cyclists as the nights draw in:

Plan ahead to be bright and be seen

Wear a reflector – this will make you visible up to 150 meters sooner when a car headlight shines on you.

Slow down

Drivers need to watch out for children walking in the road or playing or gathering near bus stops. When roads are wet or covered with soggy leaves, drivers need to allow for extra time to stop.

Be alert

Children arriving late for the bus may dart into the street without looking for traffic. If they're wearing reflective or bright clothing, you're more likely to see them from a safe distance.

Cycling to school

Now is a good time to make sure your bicycle is in good working order. Remember to wear fluorescent clothing and an approved cycle helmet.

Medway Council's Portfolio Holder for Frontline Services Cllr Phil Filmer said: "As the nights draw in it's important we all take steps to ensure we are safe on the roads. Be bright and be seen is a key message, especially for children walking or cycling to school. Everyone has a responsibility to follow a few simple road safety rules and together we can reduce the number of incidents on our roads."



High Halstow Pre-school

Modular Building, Primary School, Harrison Drive,
High Halstow, Rochester, Kent. ME3 8TF
01634 255088

Proprietor/Manager Mrs Anita Russell BA (Hons), EYPS

- ✓ 'Outstanding Provider' Ofsted
- ✓ 2009-10 Extensive Outdoor Facilities
- ✓ Excellent Links with Primary School
- ✓ Friendly, Qualified Staff
- ✓ Affordable Childcare

Open Weekdays, term time only
8.45 am - 3.30pm

Morning, lunch, afternoon and all day sessions available.

Children are funded for 5 free sessions the term following their third birthday.

Don't take Ofsted's word that we are an outstanding provider, come and see for yourself.

Ring 01634 255088

High Halstow Arts & Crafts Village Market

Handmade Cards & Jewellery,
Tattoos, Hand Bags,
Gifts, Make-up, Collectables,
Cakes and Treats.
Refreshments available.

The Memorial Hall
10am - 2pm

Sunday 13th November*
***12noon - 3pm**
Sunday 11th December

Come and support our village event!

Cornish Holiday Cottage Let

A fabulous 300 year old cottage, recently fully refurbished with open fire place, fully fitted kitchen, modern decor and off-road parking, benefitting from two well-furnished bedrooms (1 double and 1 twin).

The cottage is in the hamlet of Trewint, only a mile away from Altarnun, one of the most beautiful villages in Cornwall. The Rising Sun Inn just outside the village is a 16th century award-winning traditional pub, selling locally produced ales and fresh and innovative meals in a great atmosphere. The cottage is ideally placed for discovering the coastline of Cornwall.



- Electric wall heaters with open fire
- Electric oven and hob, microwave, fridge, dishwasher, TV with Freeview, DVD, WiFi, selection of books, games and DVDs
- Fuel, power and starter pack for open fire (October-March) inc. in rent
- Further fuel for fire available to purchase locally
- Bed linen and towels inc. in rent
- Off road parking for 1 car
- Lawned garden with furniture opposite cottage across road
- One well-behaved dog welcome
- Sorry, no smoking
- Shop and pub 1 mile.

The cottage is advertised with Sykes Cottages
(<http://www.sykescottages.co.uk/cottage/Cornwall-Fivelanes/Laburnum-Cottage-935455.html>)

Alternatively I live in the village and will be able to offer a discounted rate if you contact me directly on: Andy 01634 936095
Mobile: 07958 604268





Christmas Tree Festival 2016

On December 10th the Village Hall doors will be open to the fourth Christmas Tree Festival in High Halstow. This is now proving to be a must event in the High Halstow Calendar.

It is not too late to let us know if your group, family, business etc would like to put a tree in. All we are asking for is a donation of £5.00 per tree submitted.

Trees can be any size or shape, fresh or artificial; as far as decoration is concerned, the only limit is your imagination and afterwards your tree goes home with you for Christmas.

Trees can be decorated at the Hall or brought ready-decorated. Power is available for lights/decorations.

Trees should be brought to the Hall on:

**Friday 9th December from 19.00 to 21.00 or
Saturday 10th December from 9.00 to 12.00**

Trees must be collected on:

Saturday 10th December from 17.00 to 18.00

Please invite all your friends to come and see your entry and enjoy this event. With your help - and with the help of others – please make this Christmas Tree Festival a success.

The public are invited to view the trees from 13.00 to 16.30 with entry being just 50p. Refreshments will be available on the day.

Full programme of events to be published next months HHT.



Friends of St Margaret's Church

The aim of the Friends of St. Margaret's Church, High Halstow, is to promote wide interest in the care and preservation of St Margaret's Church and its history, to provide a focus of support for it and to support the (PCC) in maintaining the fabric, the churchyard and furnishings of the building.

It is recognised that many people see the Church in the community as an integral part of their environment, even if they do not attend services on a regular basis. Some can attend services only occasionally; others were baptised or married here; others are visitors or local residents who simply have an affection for the church which has been here for hundreds of years.

Please join us and help to ensure that future generations can continue to use and enjoy this lovely church.

How To Join

Although in the past we had accepted requests for people to pay an annual fee in one go, it was not clear enough to all that this was the case, so just to be clear you could pay as follows:

- 1 A monthly Standing Order
- 2 A one off Annual Fee

There are no set membership fees. All we ask is that you give as much or as little as you can afford with a minimum contribution of £2.00 per month, which entitles you to a twice-yearly newsletter. To join, simply complete the combined application and Standing Order form and return it to the Treasurer. Corporate and Family membership is also available on request, as are memorial bequests.

Forms are available on <http://thefriendsofstmargarets.org.uk> or from any Committee member.

Thank you all for your continued support.

High Halstow Village Hall

Quiz Night

WOW!! What another great night had by all at the Quiz Night in the Village Hall. Thanks to Margaret, Lesley and John for all of their hard work over the past year in running these events. Another £210 was added to the coffers for the Hall. Some were able to see the finished Phase Four at the break with many paying a visit to the Blue Room, upstairs. This is now available to be hired as a facility in its own right, details from Crystal on 251849.

Again many thanks to all who have come along this year to any of the Quiz Nights.

Dates for next year will be in the High Halstow Times for December along with details of a Boot Fair in January so please watch this space.

Margaret and Pat

It was so good to see Margaret Church and Pat Hillman return for the Murder Mystery in September as their contribution to the fund raising over the years, (Margaret's is still ongoing) should not be underestimated.

Pat did make a comment about her cake making being the foundation of the works but would like to reassure the village that proper materials were used during the refurbishment programme.

Refurbishment Programme Phase Five

We are nearly there with the refurbishment programme and the next phase is a much smaller phase. By the time you have received this edition of the HHT, the contractor will be in for the refurbishment of the floor. Along with a number of panels being replaced, the floor will be sanded, varnished and the badminton lines painted. This hopefully will see the floor last a number of years before it will need replacing.

Restart a Heart Week 18th October

The Village Hall Committee were very pleased to support the above where a number of people within the village and beyond were shown how to use the defibrillator. Many thanks to Steve and the team for such a fantastic job they do, not just on this date but all across the year, it really is appreciated.

Events 2017

Not only will there be the Quiz's in the New Year but the Committee will be looking to see what other events can be run during the year so please watch this space for details.



Birthday Celebrations

High Halstow Women's Institute will be celebrating its 60th Birthday in May 2017.

As part of the celebrations we would like to invite past members for any memories of the Institute. Do you have any photographs of the events such as annual May Fairs? Were you a May Queen or an attendant?

At the very first meeting on 1st May 1957 forty six members joined. We now have 26 members and it would be lovely to boost the membership for this special anniversary.

If you have any memorabilia please contact:
Crystal - 01634 251849
or June - 01634 250105

Kings Kitchen



A Coffee and Cake Café
for the Whole Village.

Open 10.00am - 1.00pm

every Tuesday

in the Memorial Hall.

Why not come in and enjoy a
cuppa and a chat.

A warm welcome awaits you.

7 Things You Didn't Know that You Didn't Know About Guy Fawkes

1. Guy Fawkes did not die from being hung, drawn and quartered:

As he awaited his grisly punishment on the gallows, Fawkes leapt to his death - to avoid the horrors of having his testicles cut off, his stomach opened and his guts spilled out before his eyes. He died from a broken neck.

2. Guy Fawkes was not the Gunpowder Plot's ringleader:

There were 13 conspirators in the plot, which was masterminded by Robert Catesby, a charismatic Catholic figure who had a reputation for speaking out against the English crown. But it was Fawkes who gained notoriety after the plot was foiled, for he was caught after sneaking into the cellar beneath the House of Lords to ignite the explosives.



3. Guy Fawkes won the unlikely admiration of King James I:

Fawkes withstood two full days of torture and expressed his regret at having failed his mission. His steadfast manner earned him the praise of King James, who described Fawkes as possessing "a Roman resolution".

4. Guy Fawkes has an island named after him:

He is one of Britain's most infamous villains, whose effigy has been burned and whose demise has been publicly celebrated for more than four centuries. Yet to the north-west of Santa Cruz Island in the Galapagos Islands, a collection of two uninhabited, crescent-shaped islands is named Isla Guy Fawkes, or Guy Fawkes Island.

5. The Houses of Parliament are still searched once a year to make sure there are no conspirators hiding with explosives:

Before the annual State Opening of Parliament, the Yeomen of the Guard search the Houses of Parliament to make sure there are no would-be conspirators hiding in the cellars. This has become more of a tradition than a serious anti-terrorist precaution.

6. The cellar that Fawkes tried to blow up no longer exists:

It was destroyed in a fire in 1834 that devastated the medieval Houses of Parliament.

7. The gunpowder would have done little damage to Parliament:

The 36 barrels of gunpowder that Fawkes planted in a cellar below the Houses of Parliament would have been sufficient to raze it to the ground, while causing severe damage to neighbouring buildings. However, some experts now claim that the gunpowder had "decayed", and would not have properly exploded even if ignited.

© The Telegraph

Speed Limits

Please can I remind people to observe the speed limits through the Village. We should all be mindful that High Halstow

is a nice place to live where children, older residents and walkers should feel safe. Some may not be as aware of the traffic as they might otherwise be. Please be careful.

George Crozer, HH Parish Council



DEJA VU SPIRITUAL CENTRE

*Everyone has an Angel, given to us from the start.
Trust and Faith is what we need, to hear them in our hearts. ♥*

Every Sunday

Please join us to see mediumship demonstrated by different medium's each week. 6.30-9.30pm ONLY £3.00 ENTRY FEE.

RAFFLE PRIZES TO BE WON AND REFRESHMENTS AVAILABLE.

**RECREATION HALL, THE STREET
HIGH HALSTOW.
ROCHESTER
ME3 8SQ**

Dates for Diary

Every Monday:

Glowfit
18:30 Village Hall

Every Tuesday:

King's Kitchen
10:00 Memorial Hall
Bell Ringers
19:30 St Margaret's Church

Every Thursday:

Sugar Babes
19:00 Memorial Hall

Every Saturday:

Karmann Dancers
09:00 Memorial Hall
Karate
09:30 Village Hall

Every Sunday:

Déjà Vu Spiritual Centre
18:30 Village Hall

Every 3rd Wednesday:

Whist Club
14:00 Memorial Hall

Every 4th Wednesday:

Friendly Club
14:00 Memorial Hall

Other Dates:

Wednesday 2nd: Women's Institute
19:30 Memorial Hall
Sunday 6th: Family Service
09:30 St. Margaret's Church
Wednesday 9th: Parish Council
20:00 Memorial Hall
Saturday 12th: High Halstow Hikers
Details in HHT
Sunday 13th: Arts & Craft Fair
10:00 Memorial Hall
Wednesday 16th: Whist Club
14:00 Memorial Hall
Sunday 20th: Family Service
09:30 St. Margaret's Church
Friday 25th: Quiz Night
20:00 Memorial Hall

Local groups, please let us know the dates of your meetings/events for the coming year so we can include them in the HHT and on the website.

Dramarama 2017 Pantomime

Dramarama will be performing Pied Piper on January 26th, 27th and 28th - Ticket details will follow in next months HHT.

How Far Back Do You Go?

It was mentioned to me recently that the High Halstow Times is approaching its 50th Birthday. That's approximately 550 editions (11 per year) of HH news, letters, updates and the occasional dog-poo complaint.

The oldest edition I have in my possession is from December 1983 in which Mrs Rachel Laphorn is thanked for her 15 years of hard work as Editor and Printer. This would certainly seem to confirm that the High Halstow Times is at least 48 years old.

It would be great to find any earlier copies which are still in existence and to scan them and store them electronically for future generations and for people to look-up online. We might also reproduce certain pages in future editions.

If you have any earlier editions, please get in touch at editor@highhalstow.org.uk or 01634 250911

Carl Mitchell
HHT Editor

Dog Walkers

Our rights of way and green spaces are for us all to enjoy. Please be aware that if you are exercising your dog it should be under control at all times, and it is your responsibility to clear up it's mess afterwards. Dog fouling is an eyesore, a serious health hazard and an environmental crime. Please clean up after your 4-legged friend.



Based in High
Halstow
Contact Jade
07708 394979



Permanent Makeup is an advanced technique used to apply coloured hypoallergenic pigments into the dermal layer of the skin. The pigments are made from natural minerals making enhancements look very natural that can last for years but will fade over time.

Treatment areas:

Brows: Eyebrows frame the face, with the right shape & colour brows it can make you look years younger

Eyes: It can be difficult to apply eyeliner correctly & make it last all day. Define your eyes with eyeliner or lash enhancement.

Lips: Define & enhance your lips with a gorgeous lip liner, blush or full lip colour.

Book a free consultation to see how Permanent Makeup can help you.

www.serenitypermanentmakeup.co.uk

*A fusion of functionality,
good taste and style...*



Beautiful Kitchens Bedrooms & Bathrooms

We have been providing homes across the Hoo Peninsular with bespoke kitchens, bedrooms and bathrooms for over 30 years. We take care of the whole process - from creating a design that you will love, to all the preparation and building work, electrics, plumbing, tiling and fitting. We pride ourselves on our quality workmanship and exceptional attention to detail.

Tailor made for your needs

Call us for a free design consultation on
01634 222 327 or 07889 028 889.
or email us at info@beautifulkitchens.co.uk

Checkatrade.com






The Friends of St Margaret's
are pleased to present

The Cuxton Music Group

❖ Christmas Concert ❖

Wednesday 14th December 2016
8:00pm at St Margaret's Church
High Halstow
Tickets £6.00
Refreshments will be available on the night
Tickets available from the Village Shop



"Seated Exercises"
Thursday Morning 11:30am - 12:15pm
£4 per session

This class is all about upper and lower body movement. If you have a problem with balance, are an older adult or are in rehabilitation then this is the class for you. All the exercises are completed using a chair in a relaxed and fun atmosphere. Equipment such as light weights, resistance bands and foam balls are used to move to music.

Come and join us...No Lycra Necessary!!!

*Phone Wendy (255366) or
Ann (251914) for more info.*

The Village Shop
Opening Hours
Monday – Saturday 7am – 8pm
Sunday 8am – 5pm
Telephone number: 01634 254561



V Sinclair Limited

**38 Longfield Avenue,
High Halstow,
Rochester, Kent ME3 8TA**

*Your Local Building Specialist For Your
Complete Building Needs*

Over 25 Years Experience

Extensions • Renovations • All Brickwork •

Insurance Work • General Building •



*Block Paving driveways •
Garages • roof repair
patios .*

CALL US FOR A FREE ESTIMATE
AT A COMPETITIVE RATE ON:

TEL: 01634 250 120

E-MAIL: vsinclairltd@btinternet.com

Learn

GUITAR

Professional guitarist and guitar teacher offers 1 to 1 tuition. All ages and abilities welcome. Graduate of London Guitar Institute and playing experience includes The Who and Robbie Williams. Can inc practical, grades & theory.

CHRISTMAS VOUCHERS AND DEALS AVAILABLE
HOME VISITS OR AT HOME STUDIO IN CHRISTMAS LANE

Call Matthew 07967 125091

CAUTION LESSONS
07367 425031

07367 125091

GUITAR LESSONS
07967 125091

CUTTAN LESSONS
07367 125091

CUTTAN LEESONS
07367 125091

GUITAR LESSONS
07967 125091

CUTTAN LESSONS
07367 125091

CUTTAN LEESONS
07367 125091

QUITAN LEES ONG
07367 125091

CUTTAN LEESONS
07967 125091



Jonathan Computers

Freephone: 0800 321 38 79

Mobile No: 07905 120 557

Email: sales@jonathancomputers.co.uk



Computer problems solved quickly and cheaply...with a friendly face

And Best of all I come to YOU!!!!

- ☐ Dramatically Speed up Slow PC's
- ☐ Virus & Malware Removal
- ☐ Fix Broadband connection issues
- ☐ Data Transfer & Recovery
- ☐ Install Windows 10 or Fix Install Issues
- ☐ NO 'Call Out' Charge
- ☐ Make Win 8/8.1 look like XP, Vista or 7
- ☐ New Economy Pc's & Laptops



NEW!!!!!!
Windows 10™

From 8th April 2014 All Support for ALL
XP™ Versions has discontinued!!!!
If you are using a computer with
Windows XP on
YOU ARE AT SEVERE RISK!!!!



**I Am Based In High Halstow
So Can Be Quick To Respond!**

01474 879878

(Gravesham Office Number)

HH Village Website

Please visit the Parish Council website for everything about our village. You can see the minutes of your Parish Council or look up local groups in the village, past copies of the High Halstow Times, and pictures of recent events. Please note that there is now an RSS feed on the Parish Website where you can get automatic updates when the site is updated. Please visit www.highhalstow.org.uk and follow the instructions on the right hand side.

High Halstow Relief in Need Charity

This charity exists to assist those in the Village who are in need, especially widows and widowers. The trustees wish to remind the people of the parish that they will give consideration to any request for a particular need, at any time during the year. If you, or an elderly relative would feel safer at home with a telephone 'Lifeline' the Charity could help with this. All requests are dealt with in complete confidence and there is no need to wait for the October form.

The trustees are:

Rev. S. Gwilt	- The Rectory
Mr S. Bailey	- 27 Cooling Road
Mrs J. Collins	- 6 Marsh Crescent
Mrs L. Munday	- 22 Willowbank Drive
Mr J. Myatt	- Decoy Hill Road
Mrs C. Peek	- 2 Willowbank Drive
Mrs N. Turner	- 12 Marsh Crescent

Vegetation

The Parish Council is asking people who have any shrubs/trees overhanging public walkways, or vegetation spilling onto the path if they would mind cutting them back in order for people to walk unhindered. Thank you for your cooperation.

Thefts from Sheds and Outhouses

Please be aware that thefts from sheds and outhouses have been reported recently on the peninsula and the Parish Council have been asked to remind people to lock up securely to make it more difficult for would be thieves.

HH Parish Council

Get Fit, Having Fun in the Dark.

High Halstow Village Hall



GLOWFITT

Easy to follow dance moves to club tunes in the dark with disco lights and glowsticks!

No need to pre-book, just turn up! Mondays at 6.30pm at the High Halstow Village Hall

For more info like our Facebook page!

f JR Fitness 07746082182

Sunday Services

8:00am High Halstow
Holy Communion BCP

9:30am High Halstow
1st and 3rd Sundays All age worship
2nd and 5th Sundays morning prayer
4th Sunday Family Communion

6:30pm High Halstow
1st Sunday Holy Communion
3rd Sunday Informal worship

Baptisms by arrangement
1st or 3rd Sunday of each month at 9:30am

For further information. Rev Stephen Gwilt 01634 250637
Or Email stephengwilt2@hotmail.co.uk

Caring for the needs of the community for over 1000 years

Let us not give up meeting together, as some are in the habit of doing, but let us encourage one another - and all the more as you see the day of judgment approaching. Heb 10:25

Readers Letters

Dear HHT,

I would like to say a huge thank you to everyone who sponsored me to climb Mount Kilimanjaro for the incredible charity, Meningitis Research Foundation. Your donations have helped me raise a massive £2420.65! I am very proud to announce that I managed to defeat the mountain and reached the summit after 6 tough days of trekking. It was such an amazing experience for a very charitable cause which was what helped me push through the final 10 hours of trekking to Uhuru peak from my last campsite. Thank you again to everyone who sponsored me for this amazing and unforgettable experience!

Kiran Cheema

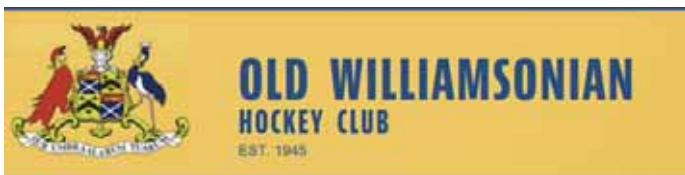


Dear HHT,

The Old Williamsonian Hockey Club, based at the Rochester Maths school, are recruiting for new members. We are looking for young, old, experienced or complete novices, male or female to join this sociable hockey club. It is a very family oriented club, and many generations are playing together in the same team, including myself and my son. The club holds a number of social days/evenings which brings the club together. Training sessions are held at the Maths school on Tuesday evenings from 7:30 to 9:00pm for teens/adults and there is training for the youngsters on a Sunday morning. Sticks can be provided. Contact Neil 07957 734683 for more information or at the following website:

www.owhc-hockey.co.uk/

Dean Harvey
Longfield Avenue



Local Groups - Information

We would like to put together over the next couple of months an insert of the local groups within the village

This is your time to let us know what you are about, when and where you meet etc. We would like to update the website as well so if you are running one of these groups please let us have the details and we will do the rest. You can see what we have already said about your group on <http://highhalstow.org.uk/local-groups>

It is your chance to promote and seek new members. If you could let us have the details at editor@highhalstow.org.uk



Next edition December 2016; Contributions for December should be sent by 25th November to:

Carl Mitchell, 8 Marsh Crescent, High Halstow ME3 8TJ
or e.mail to editor@highhalstow.org.uk