



High Halstow TIMES



Home of the Heron

December 2015

Santa's Visit

For the thirteenth year in a row Santa has decided to pay another visit to High Halstow. He has once again agreed and planned his route and therefore will be stopping by to deliver his gifts on Christmas Eve in the Village of High Halstow.



The charge as last year will be **£2.00 per present being delivered**

The usual rules will apply as follows:

1. You buy your gift and wrap it clearly with the name of the recipient and the address it is to be delivered to (High Halstow only please). If your child is attending the Church Service and would like the present at the Service please just put the address as The Church and Santa will call.
2. Pop the present along to Bob in the shop by no later than **SATURDAY 19th December.**
3. Please note for insurance purposes the value of the present should not exceed £10.00.
4. **Please, please** do not make the presents too large (preferably no bigger than shoebox size).

Again like last year Santa plans to start at around 4.00 pm. Sorry we cannot guarantee a time for any delivery, as the time taken is around 5 hours. If you have presents for young children don't forget there is a guaranteed delivery time at the Church at 6.00pm if this helps.

If you wish to have any pictures of this event added to the website please send to gary@highhalstow.org.uk. Please provide your name and address and, if possible, please identify the people in the picture.

This year the money raised will again be going to The Friends of St Margaret's Church. ***The aim of the Friends is to support the Parochial Church Council in maintaining the fabric, the churchyard and furnishings of St Margaret's Church, High Halstow***

Come on High Halstow let's make this the biggest one yet!!

And please don't supply Santa's helpers with any alcohol, mince pies or sausage rolls. They have a very busy evening and we don't want them slacking!!

**Taste of Christmas: Saturday 5th / Get in the Mood: Wednesday 9th
School PTA Christmas Fair: Thursday 10th / Christmas Tree Festival: Saturday 12th
High Halstow Market: Sunday 13th / Carol Service: Sunday 20th**

High Halstow Football Club

November saw High Halstow play two further cup games, the first of which was a thrilling encounter against Parkwood, after extra time the match was level at 4-4 and a penalty shootout ultimately saw High Halstow lose.

Then High Halstow had their final cup game but couldn't muster a win, losing 2-1 in a match where they would have hoped for a result.

With the cup games over, the league fixtures returned with High Halstow facing Woodcombe, who they had lost to on the opening day of the season. A feisty game ensued and Woodcombe battled to an eventual 4-3 win.

Fixtures:

Saturday 5th December -

HH FC v Medway Rovers (friendly)

Saturday 12th December -

Beechwood 76 v High Halstow FC

Saturday 19th December -

High Halstow FC v FC Wouldham

The Friendly Club are going to Scarborough.

The annual holiday is now booked and we have spaces available. If you are interested, read on. Travelling on Sunday 11th September and returning on Saturday the 17th. We will be staying at The Grand Hotel, Scarborough. Holiday includes return coach travel from High Halstow to the Hotel, 6 nights accommodation on a half board basis and 3 full day coach excursions. Cost is £395 but this could reduce if more people joined us. For more information please ring me on 01634 250677
Margaret Whitebread

Friendly Club

The superb evening with John Lyons was enjoyed by many people. The profit from the raffle was given to our club, and a substantial amount it was, so thank you to all who bought tickets. And of course a very big thank you to Shirleyanne and Mark for organising the event. We do not meet in December and we have a meal out in January, therefore our next meeting in the Memorial Hall will be on February 24th. Why not come along and see what we get up to.

Margaret Whitebread

The Village Shop

Opening Hours

Monday – Saturday 7am – 8pm

Sunday 8am – 5pm

Telephone number: 01634 254561

Busy Time for the W.I.

December gets a little bit manic if you belong to the WI. We start with our own monthly meeting which is very Christmasy, with seasonal food, drink and silly games, which is on Wednesday the 2nd. On the 10th we have a trip to Covent Garden for a little retail therapy and of course lunch. We will be attending 2 Carol services. The District one is at Upnor on the 11th and the county one in Rochester Cathedral on the 17th. We will also be taking part in the Christmas Tree Festival on the 12th. Hopefully we will still have enough energy to enjoy Christmas when it arrives. The meeting after Christmas will be on 6th of January, why not come along and join us.

May we wish you all a very happy and healthy Christmas and best wishes for the coming New Year.

WI's Halloween Tea

I would like to thank on behalf of all our members those who gave their help and support to making our tea such a success. Our special thanks to A C Goatham for the wonderful apples and the loan of the crib for apple bobbing, also to Carl and Jo for the loan of the costumes we are very grateful.

Crystal

WI President

Art and Craft Exhibition

I would like to thank everyone involved in the Art and Craft Exhibition held last month. We had many varied stalls and all involved had a good afternoon swapping tips and enjoying a cup of tea. We had 'crafters' from outside the village who were interested in our different village groups and now have a new member to our Wednesday "Stitchers" group. We learnt a lot from this first event and may try it again next year but have more items for sale as there was a lot of interest in the knitted items and also the sewn Christmas decorations.

We also made £75 for the Memorial Hall Fund which was a welcome amount. I would also like to thank the 'spooky' children who came across from the brilliant WI event - I made sure we had treats for them so as to avoid the tricks!

Jeanette Dowsett

Merry Christmas and a Happy New Year

The Parish Council would like to thank all the distributors of the HHT for their efforts throughout the year ensuring that the Times arrives safely on your doormats; and to wish them, and everyone else in the Parish a Merry Christmas and Happy New Year.

High Halstow Hikers

At the start of November we did a circular walk from the Dirty Habit 11th Century pub in Hollingbourne.

The walking around there is excellent with over 10 well-described routes in leaflets available in the pub. Given the wet weather in the week before and the forecast wind and rain for late on the morning of our walk (accurate as it turns out) we took our own route along generally well-made paths. This involved about 2 miles of the Pilgrim's Way to the edge of Harrietsham after which we dropped down to the village where preparations were underway around the church and the very well presented war memorial for the next day's Remembrance activities. The return route was generally parallel to the Pilgrim's Way and this returned us to the pub where most of us took an excellent lunch. Overall the walk was about 5 miles long and was very enjoyable despite the squally weather at times.

The December walk is on Sunday 6th and has changed from the previously advertised one.

Instead of being from High Halstow village this will be around Ranscombe Farm Park near Cuxton. Mike Davies will lead it. The walk will start at 10.00 from the Park car park which is on the right just after the start of the hill down into Cuxton on the A228 shortly after the exit from the M2 at Junction 2. The postcode of the Farm is ME2 1LA but you need to stop at the car park rather than going on to the Farm.

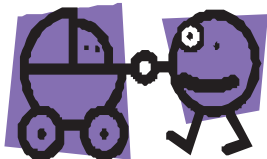
We will do an additional December walk rather than one in January. To take advantage of many people on holiday between Christmas and New Year this will be on WEDNESDAY 30th and will start at High Halstow village hall car park at 10.00. It will be a local walk of about 5 miles with the route chosen according to the conditions underfoot. All are welcome.

Queries can be made with Mitchell on 01634254428 or on mitch.dowsett@btopenworld.com.

Considerate Parking

Mums with babies and older people are finding it more and more difficult to walk around the village due to cars parked on the pavement. They are having to walk into the road because of this, which is dangerous and unnecessary, particularly now that it is getting darker earlier. Please think about this before you park your car/van and try to be a little more considerate.

Thank you
High Halstow Parish Council



High Halstow Parish Council New Bus Shelter

We are considering replacing the metal bus shelters in the village with softer looking timber shelters similar to those shown below.



It is hoped that this will start with the installation of a bus shelter in Christmas Lane adjacent to the bus stop East of Half Moon Way.

There will be an opportunity to see details / Designs of the proposed shelters at:

The Memorial Hall on 15th Dec 2015 & 5th Jan 2016

And a site meeting on 9th Jan 2016

Between 10:30 & 12:00

Please direct your comments by 1st February 2016 to:

HH Parish Council
c/o The Parish Clerk
53 Capelands
New Ash Green
Longfield Kent
DA3 8LQ

clerk@highhalstow.org.uk

or to Cllr. Brian Williams

Brianwilliams@highhalstow.org.uk

High Halstow Gardeners

We were entertained by an excellent talk this month by Jim Buttress on 'Royal Parks'. He was able to share his extensive knowledge of working as a Superintendent for the Royal Parks sharing the methods of how the impressive floral display is maintained. He also told of his experience as acting as a judge on The Great Allotment Challenge. It was an evening of much laughing.

Our December meeting will be our annual Christmas social evening for members with musical entertainment. As usual we will not meet in January but will resume on 9th February with our AGM.

On behalf of the committee, we wish you all a Merry Christmas and a Happy New Year.

Cooling Road Home Group

Well done, you!

Earlier this year I wrote to HHT, putting in a plea for donations of wool. We were delighted with the result and would once again like to say a sincere thank you to all who took the time and trouble to respond. I feel you all might like to know the outcome, i.e. what we have done with your wool!!

We were able to meet a request from 'Morning Star' ____ a charity based in Welkom, South Africa, which provides daily care for children whose parents have AIDS, (and which, unfortunately, many of the children also have). It is run by a very caring lady called Joan Adams, who came to High Halstow on 23rd. June to talk about 'Morning Star'. Joan also keeps a close eye on the needs of her 'pupils' in the home situation. Apparently the evenings there are very cold, as is the winter, and she felt the children were in great need of warm blankets.

So we rose to the occasion and in early September a representative of 'Morning Star' called to collect 27 blankets to go out to South Africa.

Last Friday, I delivered a further 22 blankets (plus some knitted garments) to Ray Avenal for his S.E.E.D. Charity, which appears still to have a close connection with our original (till it had to close its Strood branch) chosen charity, Blythwood. Some of these blankets are going out this coming week, via a Blythwood lorry, to Serbia, where, in connection with the Serbian Red Cross, they will be delivered to a Centre dealing with refugees.

The remaining blankets will be reserved for Ray's wheelchair project, whereby wheelchairs are refurbished and distributed to the disabled, each with its own cosy blanket.

As a group, we are delighted we were in a position to respond quickly to these worthy appeals and to know where our blankets are going ____ **however, without your help, this would not have been possible.**

Our thanks once again ____ but please keep the wool coming, as, obviously, meeting such demands has made quite a hole in our resources!

May I also pass on our appreciation to our dedicated band of knitters and say a resounding 'Well done' to them with a very special reference to Myrtle Bishop, who has now completed over 200 blankets (which means over 200 people are a lot cosier than they might have been!)

What excellent teamwork from everyone! Thank you all so much for your wonderful and so necessary support.

Last but not least, Medway Hospital Premature Baby Unit was also very happy to receive some really beautiful tiny baby garments, passed on to them recently.

Hazel Beringer. 25 Cooling Road, High Halstow. (251135)

RSPB Northward Hill Reserve News *November 2015*

Here at Northward Hill we have begun our winter work programme within the woodland. Certain areas of the woodland have been 'coppiced' which means they have been cleared of the smaller trees to allow sunlight to the ground to encourage flower and scrub growth, and also by cutting down the Hawthorne and Elder in that area will start the woodland life cycle again. So the woodland as a whole will contain trees and scrub of different age groups which in turn provides the ideal nesting and feeding sites for a variety of different birds. Within these plots some of the trees have been left standing and this is to allow them to mature and there are also some deadwood piles to encourage invertebrate activity which in turn provides some of the birds with food.

By Stephanie King
(Residential Intern – North Kent Marshes)



A coppice plot in the Northward Hill woodland

Christmas Tree Festival 2015

On December 12th the Village Hall doors will be open to the fourth Christmas Tree Festival in High Halstow. This is now proving to be a must event in the High Halstow Calendar.

It is not too late to let us know if your group, family, business etc would like to put a tree in. All we are asking for is a donation of £5.00 per tree submitted.

Trees can be any size or shape, fresh or artificial; as far as decoration is concerned, the only limit is your imagination and afterwards your tree goes home with you for Christmas.

Trees can be decorated at the Hall or brought ready-decorated. Power is available for lights

Trees should be brought to the Hall on:

Friday 11th December from 19.00 to 21.00 or Saturday 12th December from 9.00 to 12.00

Trees must be collected on **Saturday 12th December from 17.00 to 18.00**

Please invite all your friends to come and see your entry and enjoy this event. With your help - and with the help of others – please make this Christmas Tree Festival a success.

The public are invited to view the trees from 13.00 to 16.30 with entry being just 50p. Refreshments will be available on the day.

Programme as follows:

Doors Open 1.00pm

Entertainment

Karmann Dancers 2.00pm

Dramarama 2.30pm

Karmann Dancers 3.00pm

Community Singing 3.30pm



Friends of St Margaret's Church

St. James'
Sure Start Children's Centre
For families with children aged 0-5 years



Bumps to Toddlers
at High Halstow Village Hall
Monday
9am-10.30am

For pregnant women and children from birth to toddler stage.

This session includes sensory fun, introducing solid food, stories & rhymes, tummy time, staying safe and much more!
Come along and meet other parents and their babies.

Self baby weighing is also available in this session.

IF YOU WOULD LIKE FURTHER INFORMATION, PLEASE CONTACT:
St. James' Sure Start Children's Centre
St. James' Church of England Primary Academy High Street Isle of Grain ME3 0BS
01634 270341 E: childrenscentre@stjames.medway.sch.uk
www.stjamesisleofgrain.org.uk

Sure Start Children's Centres
Medway
A Sure Start Children's Centre
Medway
Serving You

High Halstow Calendars

The official High Halstow calendar will soon be on sale in the Village Shop and will also be available at the Christmas Tree festival on the 12th December in the Village Hall. The calendars are £6.50 large, £5.50 small, and are made up from the winning pictures of this years photographic competition.

Need to Hire a Hall

If you are interested in hiring either of the halls in the village for a party, function or meeting please contact:

Memorial Hall - Angela Forward 251756
Village Hall - Crystal Wakefield 251849

Please do not call on a Sunday.

Village Hall

WOW WOW WOW What a show!!

The Murder Mystery put on by Dramarama was a change in the type of show put on by this talented group but what a change. Superbly put together by Mick Woolmington and Noleen Skudder, the cast old and new members alike really took to the challenge this represented and performed exceptionally well.

The biggest challenge though was taken on by Jo Mitchell and her army of helpers who put together a terrific three course meal for 150 people. This was not what was envisaged when Jo 'volunteered' to take this on for the show but take it on she did. This was the first show where there were actually more helpers off stage than on and was gratefully received by all who came.

The Village Hall would like to say a special thank you to Dramarama and Jo's army of helpers for all of the work undertaken and for all of you who came along on the two evenings. £540 was raised which will be going towards Phase Four which hopefully will be starting early into the New Year.

The Village Hall would like to thank you all for your continued support and wish you a Happy Christmas.

Village Hall Committee

Your Parish Councillors

George Crozer, Chair 01634 250286
e.mail: george@highhalstow.org.uk
Stuart Bailey, Vice Chair 07976 760844
e.mail: bailey.stu@btinternet.com
Martin Andrews 07984 791029
Ray Collins 01634 250105
Gary Jerreat 01634 253999
Bill Khatkar 07775 668620
Carl Mitchell 01634 250911
Christine Watson 01634 256529
Brian Williams 07908 006448
e.mail: bdwilliams9@hotmail.com

Your councillors may also be contacted through the Parish Clerk:

Mrs Roxana Brammer 01474 871269
clerk@highhalstow.org.uk

Dog Walkers

Our rights of way and green spaces are for us all to enjoy especially this time of year. Please be aware that if you are exercising your dog it should be under control at all times, and it is your responsibility to clear up it's mess afterwards.



Messy Christmas

St. Margaret's Church

Fun, Games, Great Songs, stories and Crafts. Come dressed as your favourite Christmas Character, With a visit from Santa and his helpers at 6:00pm

Christmas Eve

5:00-6:00pm



Events planned for the coming period are as follows:

12th December 2015 Christmas Tree Festival

See details in the HHTs as to how you can support this event which is becoming a firm favourite within the Village.

12th March 2016 Cake Festival

Building on the success of the first Cake Festival, the event will run again and so you all have enough notice to practice your baking skills.

Please see page 9 for more details and keep an eye-out for the entry form in the February HHT.

Date to be confirmed 'March of the Scarecrows'

The Committee are hoping that there will be a Village event next year which we can take part in and am proposing our contribution could be the March of the Scarecrows. Do you think you have what it takes to make a scarecrow? If so watch this space for further details.

Date to be confirmed Flower Festival

Likely to be July we are looking to hold a Flower Festival in the Church.
Details to follow next year.



Please watch this space in future High Halstow Times for further details of these events.

Use of Funds

The Friends are aware that there is an estimate being sought from an electrician to meet the items identified highlighted in the recent Quinquennial report and we will await to see if we will be asked to contribute to this work.

A Reminder of How To Join

Although in the past we had accepted requests for people to pay an annual fee in one go, it was not clear enough to all that this was the case, so just to be clear you could pay as follows:

- 1 A monthly Standing Order
- 2 A one off Annual Fee

Forms are available on <http://thefriendsofstmargarets.org.uk> or from any Committee member

The Friends Committee would like to thank you all for your continued support and wish you all a very happy Christmas.

Friends of St Margaret's



CODY { }

Your Local Website Design Services.

Cody is a new, local web design company in your area. In fact, the owner grew up in High Halstow.

Our services include site designs / re-designs, updates, repairs and touch-ups.

If you are thinking about having a web design service, get in touch for a quote.

www.codywd.com

07792 611528 contact@codywd.com

Speed Limits

Please can I remind people to observe the speed limits through the Village. We should all be mindful that High Halstow

is a nice place to live where children, older residents and walkers should feel safe. Some may not be as aware of the traffic as they might otherwise be. Please be careful.

George Crozer, HH Parish Council



Quiz Nights

The Misfits decided that the profit from the October quiz would be donated to Macmillan Cancer Support and we raised a massive £251.00. This means that Macmillan have received a total of £434.00 from the last two quiz nights. I have received lovely letters of thanks on both occasions.

The charity to benefit from the November quiz has been selected by the WI and was revealed on the night. The charity was the Wisdom Hospice and they received £241.00.

As the December quiz actually falls on Christmas Day there will be no quiz until 29th January in the Memorial Hall. For those in need, there will be the first of the four quizathons on 15th January in the Recreation Hall to raise funds for Phase 4 of the building work.

Thanks to everyone for their support during 2015.

Happy Christmas

Margaret Church

Dates for Diary

Every Monday:

Bumps & Toddler's

09:00

Village Hall

Every Tuesday:

King's Kitchen

10:00

Memorial Hall

Bell Ringers

19:30

St Margaret's

Church

Every Wednesday:

Stay & Play

09:00

Village Hall

Every Thursday:

Mother and Toddler's

09:00

Memorial Hall

Sugar Babes

19:00

Memorial Hall

Every Saturday:

Karmann Dancers

09:00

Memorial Hall

Every Sunday:

Déjà Vu Spiritual Centre

18:30

Village Hall

Every 4th Wednesday:

Friendly Club

14:00

Memorial Hall

Other Dates:

Wednesday 2nd:

19:30

Women's Institute

Memorial Hall

Saturday 5th:

12:00 - 3:00pm

Taste of Christmas

Village Hall

Sunday 6th:

09:30

Family Service

Sunday 6th:

09:30

St. Margaret's Church

Sunday 8th:

10:00

High Halstow Hikers

Details in HHT

Tuesday 9th:

20:00

Village Market

Memorial Hall

Sunday 20th:

09:30

Gardening Club

Memorial Hall

Thursday 24th:

17:00

Family Service

St. Margaret's Church

Friday 25th:

09:00

Messy Christmas

St. Margaret's Church

Wednesday 30th:

Christmas Family Service

St. Margaret's Church

High Halstow Hikers

Details in HHT

Local groups, please let us know the dates of your meetings/events for the coming year so we can include them in the HHT and on the website.

Kent's beauty sculptress with Clinics in Harley Street and Rochester

We offer many treatments including:

- BOTOX AND FILLERS FOR AESTHETIC REASONS**
e.g. Blinks and wrinkles
- BOTOX FOR MIGRAINE AND TENSION HEADACHES**
An accurate treatment is included in the therapy
- UNIQUE 'STEPBACK' SOFT TISSUE FACELIFT**
A full or partial facelift done under local anaesthetic, with little downtime
- SWEATING PROBLEMS**
On the face or armpits
- COMPLEXION PERFECTION**
If your complexion is lacking and is developing small lines then this will put it right in just a short time. It treats small, non-dangerous symptoms of wrinkles, rosacea and hyperhidrosis (the skin's overreaction) into the troublesome areas.
- NECK LIFTS AND DÉCOLLETAGE**
We call this our 'Najette' neck lift. We can use a combination of treatments to help obtain a beautiful neck and décolletage.
- NON-SURGICAL NOSE JOBS**
You no longer need to go under the knife to get the perfect straight nose - in many cases we can do this for you.
- TEETH GRINDING AND GUMMY SMILE**
i.e. when too much gum shows on smiling. These two problems can be treated using Botox.

What makes Stepback Cosmetic Medicine unique?

All our practitioners are qualified Medical Doctors each with over 20 years' experience in NHS General Practice and over 11 years experience in advanced Cosmetic Medicine techniques. We are very passionate about delivering the very best treatments.

Safe in our hands

"Kent's King & Queen of Faces"
Dr. Christopher Davies & Dr. Geraldine McKeever

Botox, fillers & much, much more

Introducing "Silhouette Soft thread face lift"
Our newest treatment performed by Dr. Geri McKee will know trader of Cosmetic Medicine. Please visit www.silhouette-lift.com. We are delighted to offer an introductory price of £1200. We will hold this offer for any bookings made up to the end of October when the price will revert to £1900.

Celebrity testimonial: Sarah Jagger, This Morning TV Beauty Presenter & Red Carpet Make up Artist

"I've seen Geri's work and I'm amazed at how she can create a fuller cheekbone, a higher brow and a sharper jaw line all with the use of Botox and fillers and without meek parents looking on they've had something done. I'd say to anyone thinking of having a face lift to rethink and to go to Geri's instead!"

More testimonials available on our website

StepBack cosmetic medicine

For more information or our prices please contact us: 0870 161 0680 or visit www.step-back.com

Bird Ringing for Visitors:

Get hands-on with the experts

9am to 11am, Meet at the Brick Barn next to the main car park
RSPB Northward Hill, Bromhey Farm, Cooling, ME3 8DS

Ever fancied watching bird ringing in action? If so, this is your opportunity to join local expert Roger Kiddie as he shows you the birds up close and personal. You can even help release them back into the wild!

Bird species vary throughout the year, so return visits are recommended.

Dates

Sunday 10th January 2016
Sunday 7th February 2016
Sunday 6th March 2016
Sunday 3rd April 2016

Prices

Adults: £6 (RSPB members £3)
Children 16 & under are FREE

Contact

Booking is essential.

Telephone 01634 222480 or e.mail northkentmarshes@rspb.org.uk

rspb.org.uk/Northward Hill



Image taken by Roger Kiddie, kindly at Northward Hill 20/01/16

The RSPB is the country's largest nature conservation charity, inspiring everyone to give nature a home.

The RSPB is a registered charity in England & Wales 207078, in Scotland SC037664

Cake Festival 12th March 2016

Competition Categories

1. Cupcakes – six
2. Coffee & Walnut cake
3. Fruit cake
4. Chocolate cake
5. Bible cake
6. Novelty cake
7. Madeira cake
8. Lemon Drizzle cake

Event Rules

1. The competition is open to all non professional bakers and the ingredients must be safe, legal and not a commercial ready mix.
2. Exhibits and place cards must remain in place throughout the event .
3. The committee reserves the right to refuse an entry and accepts no responsibility for damage to the entries.
4. The judging will be “blind” i.e. the judges will not know the identity of the entrant.
5. The judge's decision will be final.
6. Entrants can offer their cake for sale on the day at their price, but the committee requests a minimum of 10% donation to the fund.
7. Entries not being sold can be collected between 5 – 6pm.

For more details or to request an entry form, please contact June Collins 01634 250105 or email junemari@fsmail.net

Kings Kitchen



A Coffee and Cake Café
for the Whole Village.
Open 10.00am - 1.00pm
every Tuesday
in the Memorial Hall.

Why not come in and enjoy a
cuppa and a chat.

Parish Council Surgery

As there is no Parish Council meeting in December there will be no surgery at Kings Kitchen.

Merry Christmas and a peaceful New Year to everyone and we will see you on January 12th 2016.

Christine Watson & Gary Jerreat



High Halstow Pre-school

Modular Building, Primary School, Harrison Drive,
High Halstow, Rochester, Kent. ME3 8TF
01634 255088

Proprietor/Manager Mrs Anita Russell BA (Hons), EYPS

- ✓ 'Outstanding Provider' Ofsted
- ✓ 2009-10 Extensive Outdoor Facilities
- ✓ Excellent Links with Primary School
- ✓ Friendly, Qualified Staff
- ✓ Affordable Childcare

Open Weekdays, term time only
8.45 am - 3.30pm

Morning, lunch, afternoon and all day sessions
available.

Children are funded for 5 free sessions the
term following their third birthday.

Don't take Ofsted's word that we are an
outstanding provider, come and see for
yourself.

Ring 01634 255088

Have you got what it takes to be an RSPB volunteer?

North Kent Marshes are currently seeking new recruits to join our volunteer work party, every Tuesday and Thursday



Why we want you?

Our North Kent Marshes nature reserves, which include Northward Hill, Shorne Marshes and Cliffe Pools, provide vital habitat for a wide variety of birds and wildlife. In order to manage these reserves effectively we rely on help from volunteers who enjoy getting stuck in with practical conservation and maintenance work. You'll be working with our permanent reserve team and other volunteers with a variety of tasks ranging from vegetation clearance, path maintenance, installing bird boxes, fencing, and much more!

You will be given a health & safety induction to the site and training when using specific tools. Safety equipment will be provided but if you have your own safety boots please bring them.

What's in it for you?

A great opportunity to enjoy being outside amongst nature, whilst making a real difference to the work of the RSPB. Also the chance to work as part of a small friendly team, get fit, and increase your experience and knowledge of practical nature conservation.

The skills you'll need

- Enthusiasm and an interest in conservation
- Happy to work outside for up to 5 hours at a time
- Reliable
- To be fit and well to undertake physical duties
- To enjoy working as part of a team

We would reimburse you for out-of-pocket travel expenses, invite you to volunteer thank you events, send you copies of our bi-annual volunteer newsletter, and of course give you ongoing support in your role. The RSPB speaks out for birds and wildlife, tackling the problems that threaten our environment. We rely upon memberships and donations to fund our work. By volunteering your time and skills, you could make a real difference to the work of the RSPB. Nature is amazing - help us keep it that way.

If you think this is right for you, please contact:-

Ben Newton, Assistant Warden

Telephone: 01634 222480

E.mail: ben.newton@rspb.org.uk

Bromhey Farm, Cooling, ME3 8DS



*The Parish of High Halstow and Allhallows
with St Mary Hoo are delighted to present*

A TASTE OF CHRISTMAS

Saturday 5th December 2015

12.00 - 3.00 p.m.

**at the HIGH HALSTOW
RECREATION HALL**

**Locally made preserves, cordials,
crafts, cakes and festive food**

Beautiful hand-crafted Christmas decorations, books

Dress up in the Festive Photo booth

Great Christmas music

And a whole lot more.

**With a special guest from the North Pole
as well as children's games and stalls**

**Come and join us for lunch. There will be a
selection of hot and cold food available
and get ready for the best Christmas ever**



Jonathan Computers

Freephone: 0800 321 38 79

Mobile No: 07905 120 557

Email: sales@jonathancomputers.co.uk



Computer problems solved quickly and cheaply...with a friendly face

And Best of all I come to YOU!!!!

- | | |
|--|--|
| <input type="radio"/> Dramatically Speed up Slow PC's | <input type="radio"/> Virus & Malware Removal |
| <input type="radio"/> Fix Broadband connection issues | <input type="radio"/> Data Transfer & Recovery |
| <input type="radio"/> Install Windows 10 or Fix Install Issues | <input type="radio"/> NO 'Call Out' Charge |
| <input type="radio"/> Make Win 8/8.1 look like XP, Vista or 7 | <input type="radio"/> New Economy Pc's & Laptops |



**NEW!!!!!!
Windows 10™**

From 8th April 2014 All Support for ALL
XP™ Versions has discontinued!!!!
If you are using a computer with
Windows XP on
YOU ARE AT SEVERE RISK!!!!



**I Am Based In High Halstow
So Can Be Quick To Respond!**

01474 879878

(Gravesham Office Number)

The All New High Halstow Market and Table Top Sale

High Halstow Memorial Hall
Sunday 13th December
10am - 2pm

Stalls will include:
Butcher, Jeweller, Hand-made-Cards, Make-up,
Lucky Dip, Bric-a-Brac, Hand Bags,
Dragon & Fairy Ornaments, Cakes
and much more!!

Refreshments available.

If you would like a table, please call Pat 01634 251077

Raffle for the Friendly Club and Charity

Learn GUITAR

Professional guitarist and guitar teacher offers 1 to 1 tuition. All ages and abilities welcome. Graduate of London Guitar Institute and playing experience includes The Who and Robbie Williams. Can inc practical, grades & theory.

CHRISTMAS VOUCHERS AND DEALS AVAILABLE
HOME VISITS OR AT HOME STUDIO IN CHRISTMAS LANE
Call Matthew 07967 125091



LOCAL ELECTRICIAN

Domestic + Commercial + Industrial
NAPIT PART P APPROVED ELECTRICIAN
Steve Waldie

Full & Part Rewires - Consumer unit changes - internal power sockets & lighting - External power & lighting - Bathroom fans - Testing & inspection - Alarm Systems

No Job Too Small - No Call Out Charge
All work fully insured and guaranteed



Tel 01634 253169 Mob 07833 251805

PAUL HUGHES

Double Glazing Repairs

NO CALL OUT CHARGE FREE ESTIMATES

- Misted Units Replaced •
- Cracked Units Replaced •
- Broken Hinges •
- Cat Flaps Fitted •
- Locks Repaired •
- Damaged Handles •
- Doors Re-Adjusted •
- Windows Fitted •



M: 07815 948637

H: 01634 256631

GET IN THE MOOD FOR CHRISTMAS



**9th December
2pm - 4:30pm
The Memorial Hall**



**Come along and enjoy a mince pie,
a glass of mulled wine
and a game of bingo.**



**Have an hour or two to relax and
enjoy yourself
before the stress
of Christmas shopping
and preparations set in.**



£3 on the door



**For more info ring
Wendy 01634 255366**

St. James' **Sure Start Children's Centre** For families with children aged 0-5 years



Stay and Play
at High Halstow Village Hall
Wednesday
9am-10.30am

For children 0-5 years.
A wide range of activities for children and adults to
get involved with including creative activities,
physical activities and exploration.
Fresh fruit and drinks are available.

IF YOU WOULD LIKE FURTHER INFORMATION, PLEASE CONTACT:

St. James' Sure Start Children's Centre
St. James' Church of England Primary Academy High Street Isle of Grain ME3 0BS
01634 270341 E: childrenscentre@stjames.medway.sch.uk
www.stjamesisleofgrain.org.uk

Sure Start
Children's Centres
Medway



Medway
Serving You



Based in High
Halstow
Contact Jade
07708 394979



Permanent Makeup is an advanced technique used to apply coloured hypoallergenic pigments into the dermal layer of the skin. The pigments are made from natural minerals making enhancements look very natural that can last for years but will fade over time.

Treatment areas:

Brows: Eyebrows frame the face, with the right shape & colour brows it can make you look years younger

Eyes: It can be difficult to apply eyeliner correctly & make it last all day. Define your eyes with eyeliner or lash enhancement.

Lips: Define & enhance your lips with a gorgeous lip liner, blush or full lip colour.

Book a free consultation to see how Permanent Makeup can help you.

www.serenitypermanentmakeup.co.uk

SanFran Fitness

Fitness classes for all ages in Kent

A New Fitness Class

"Seated Exercises"

Thursday Morning 11:30am - 12:15pm

£4 per session

This class is all about upper and lower body movement. If you have a problem with balance, are an older adult or are in rehabilitation then this is the class for you. All the exercises are completed using a chair in a relaxed and fun atmosphere. Equipment such as light weights, resistance bands and foam balls are used to move to music.

Come and join us...No Lycra Necessary!!!

Phone Wendy (255366) or Ann (251914) for more info.

High Halstow Stitchers in The Memorial Hall

1st, 2nd & 3rd Wednesdays in each month 12-2pm

A chance to learn a new skill involving Stitches of all types from friendly, like minded ladies and to pass on any skills you may have.

Quilting - X Stitching - Patchwork - Knitting
Sewing in General etc.

Come along and join us.



DEJA VU SPIRITUAL CENTRE



Every Sunday

Please join us to see mediumship demonstrated by different medium's each week. **6.30-9.30pm ONLY £3.00 ENTRY FEE.**

RAFFLE PRIZES TO BE WON AND REFRESHMENTS AVAILABLE.

RECREATION HALL, THE STREET
HIGH HALSTOW.
ROCHESTER
ME3 8SQ



High Halstow Toddler Group

Everyone is welcome mums, dads, grandparents, child minders etc. We are on every Thursday 9am - 11am (term time only). We have homemade cake every week for the adults to enjoy and we supply juice and biscuits for the little ones. We have a good rang of toys that are currently being updated to make sure all are in working order. Its a good opportunity to meet some locals with children and we get to have a good natta. We are going to try and do an activity every week, colouring, playdoh, sticking stickers etc. We have just had a very successful Halloween party with nibbles and music and we will be having a Christmas party as well which I hoping will have a good turn out too. For more information contact Emma On 255874.



Toddler Group

Come and join us for a cake & a coffee while the toddlers play!

A great way for mums, dads, grandparents, childminders & Kids to make new friends.

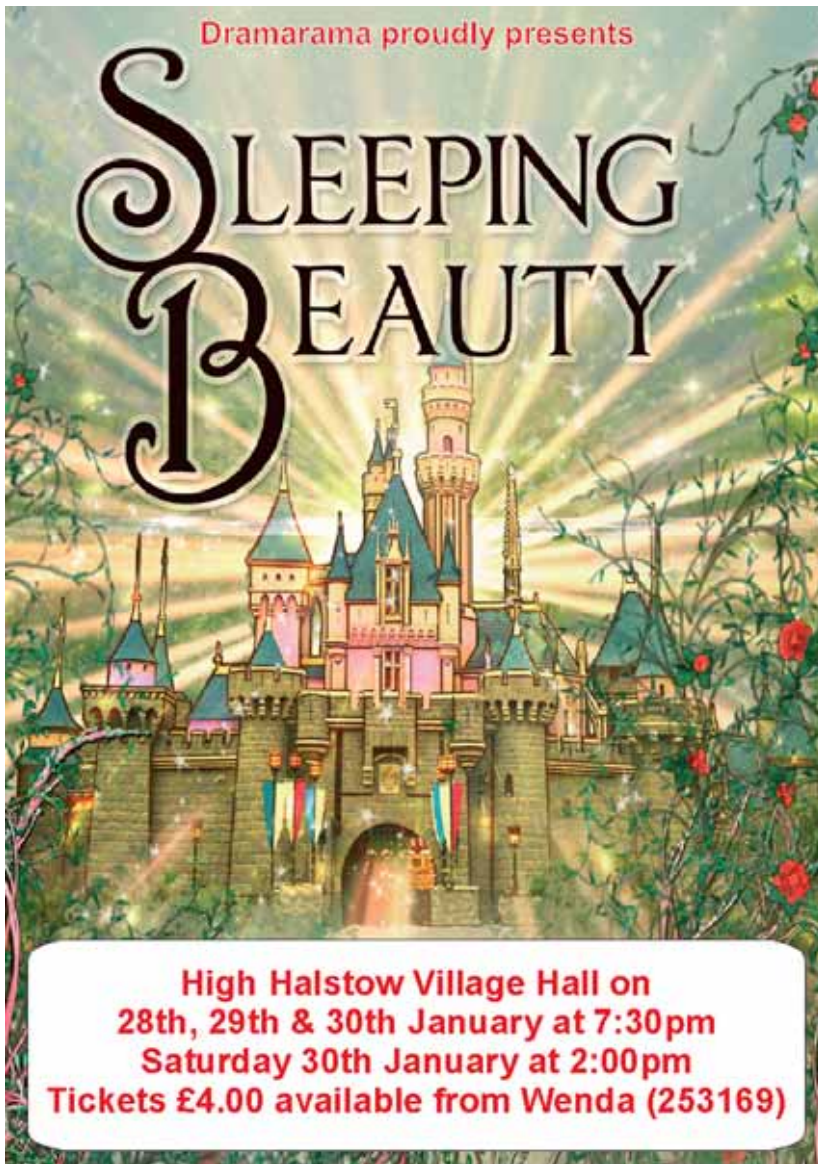
Babies to 4 year olds,
just £1 for two hours of play.

Every Thursday, 9am to 11am at
the Memorial Hall, High Halstow.

Your first session is FREE!

Dramarama proudly presents

SLEEPING BEAUTY



High Halstow Village Hall on
28th, 29th & 30th January at 7:30pm
Saturday 30th January at 2:00pm
Tickets £4.00 available from Wenda (253169)

HH Village Website

Please visit the Parish Council website for everything about our village. You can see the minutes of your Parish Council or look up local groups in the village, past copies of the High Halstow Times, and pictures of recent events. Please note that there is now an RSS feed on the Parish Website where you can get automatic updates when the site is updated. Please visit www.highhalstow.org.uk and follow the instructions on the right hand side.

Local Groups and the Website

You can advertise your activities free of charge on this site just let us have the details. If your details need updating with either dates or details of events please let us know by emailing gary@highhalstow.org.uk. This can be used to keep your members informed and possibly attract new members to your group.



High Halstow Primary School PTA



CHRISTMAS FAIR



10th December 3:30pm - 6:00pm
Come along and support your village

Craft Stalls

Games

Hot Food

Mince Pies

Cake Stand (donations welcome)

Slush Machine & Fresh Popcorn

Decorate a Gingerbread Man

Plus much much more!



Christmas Fair entrance via the Harrison Drive School Gates

Readers Letters

Dear HHT,

The Murder Mystery Night on Saturday 7th November. Having never been to one of these evenings before, I did not know what to expect. WOW! I have never experienced an evening like it! A party game was turned into a three act play by written by Noleen Skudder and very professionally produced by Mick Woolmington. The whole cast of suspects spent all evening on stage. The interaction between them all was excellent and some new "straight" actors and actresses discovered. This is another genre to add to the Dramarama repertoire. The Catering Crew's three course meal was wonderful. Jo Mitchell's lasagne was the best I have ever eaten. The smart waiters and waitresses attended to our every need. I know that there were also many others who worked tirelessly behind the scenes to make the evening such a huge success. I am sorry that I cannot mention everyone individually. The professional attention to detail was impressive. The Menus, Heron Hall Wine Bottle Labels and the thought provoking Quiz just added to the variety and ambience of the evening. I can't wait for the next one. If you did not attend, I want to encourage you to book well in advance. Congratulations to the Hall Committee and to Dramarama for a magnificent performance. A truly memorable night. THANK YOU EVERYONE.

Di Welch
Northwood Avenue

Oscar Tomlinson Finds It!!

You may have noticed one or two Christmas advertisements appearing on the television recently! What you might not be aware of is that the Debenhams 'Found It' campaign features one of our own. Oscar Tomlinson (aged 6) who lives in Longfield Avenue appears with his new 2015 Christmas teddy bear in the Debenhams TV advert. As well as the television advert, Oscar appears in the press campaign in the national newspapers and various billboards across the country. Oscar, who attends High Halstow Primary School, has previously appeared in press adverts for Marks and Spencer, Ladybird and Start-rite shoes but this is his first TV commercial. The commercial was shot over 2 days in Blackheath back in September, and although there was a lot of waiting around Oscar had great fun once in front of the camera. Who knows, hopefully this may lead to even greater things.

Christmas Service Times

13th December

11:00am DIY Nativity service (AH)

6:30pm: Carol Service (AH)

20th December

6:30pm: Carol Service (HH)

24th December

5:00-6:00pm Messy Christmas for children
followed by a visit from Santa (HH)

11:30 Midnight Communion (AH)

25th December

8:00am Holy Communion (HH)

9:00am Christmas family service (HH)

10:30am Christmas family service (AH)

NO SERVICE ON SUNDAY 27TH DECEMBER

For more information please contact
Rev Stephen Gwilt on 01634 250637 or
Stephengwilt2@hotmail.co.uk

**Without Christ it
really isn't Christmas**



Next edition February 2016; Contributions for February should be sent
by 24th January to:

Carl Mitchell, 8 Marsh Crescent, High Halstow ME3 8TJ
or e.mail to editor@highhalstow.org.uk