

KEY

BUILDING AND EXTERNAL FINISHES KEY

- E10 Chalk wall finish to S071 / DET / 420.
- E11 Current weatherboarding to S071 / DET / 421.

STRUCTURAL KEY

- S1 To Structural Engineers drawings and recommendations.

INTERNAL WALL FINISH KEY

- B1 12mm Sheets with skin finish
- B2 Voidance to full height of wall

INTERNAL PARTITION KEY

- pa1 60 mm fire rated surface sand wall of partition thickness 125mm with 2 layers of Wall board and minimum size of 75k system.
- pa2 Fire rated Glazing to S071 / DET / 422 and 424

FLOOR FINISHES KEY

- FF3 2.5 Alpha Unity Terrage Safety Vinyl (grey) with core skirting or equal approved.
- FF4 Insulation Beneath Entrance Matting (grey) or equal approved.
- FF7 Carpet finishes to suit to Contractor's choice and Client's approval.

- FF33 Existing Timber floor to be sanded and finished with boards varnished to Architects' specification.

CEILING FINISHES KEY

- CE3 Existing floor finish to be retained.
- CE4 Existing Gyprock Ceiling in the First Floor to be retained.

Existing Gyprock overhead ceiling system including GULL fitting channel and GULL/GA timber connector to be Joints, 2x staggered layers 12.5mm Batts production ready board providing 0.09m R_s equal approval.

FC1 - finished ceiling levels of these floors varies from +2469 or Ceiling D to +2586 at floor level or external wall average +2428)

DOOR & WINDOWS

- GS1 Window external door to be (E) External door Gyprock door window finish to be retained.
- GS2 Window / door open (Chl compatible full panel (white), 700 x double depth).
- FS 450mm x 2000mm fire rated door 30mins, FE = Fire Escape door with panic escape hardware, TCS=thermal break double door, V=void with Vision Panel) structural opening width height.
- UPVC doors / windows to be glazed with Aluminium Composite Panel, White in Colour.
- Aluminium doors / windows to be glazed with Aluminium Composite Panel, White in Colour.

Notes: Fire shutters to contractors choice to the client and Fire officer's approval.

FOR TENDER
ISSUE DATE: 17/02/15

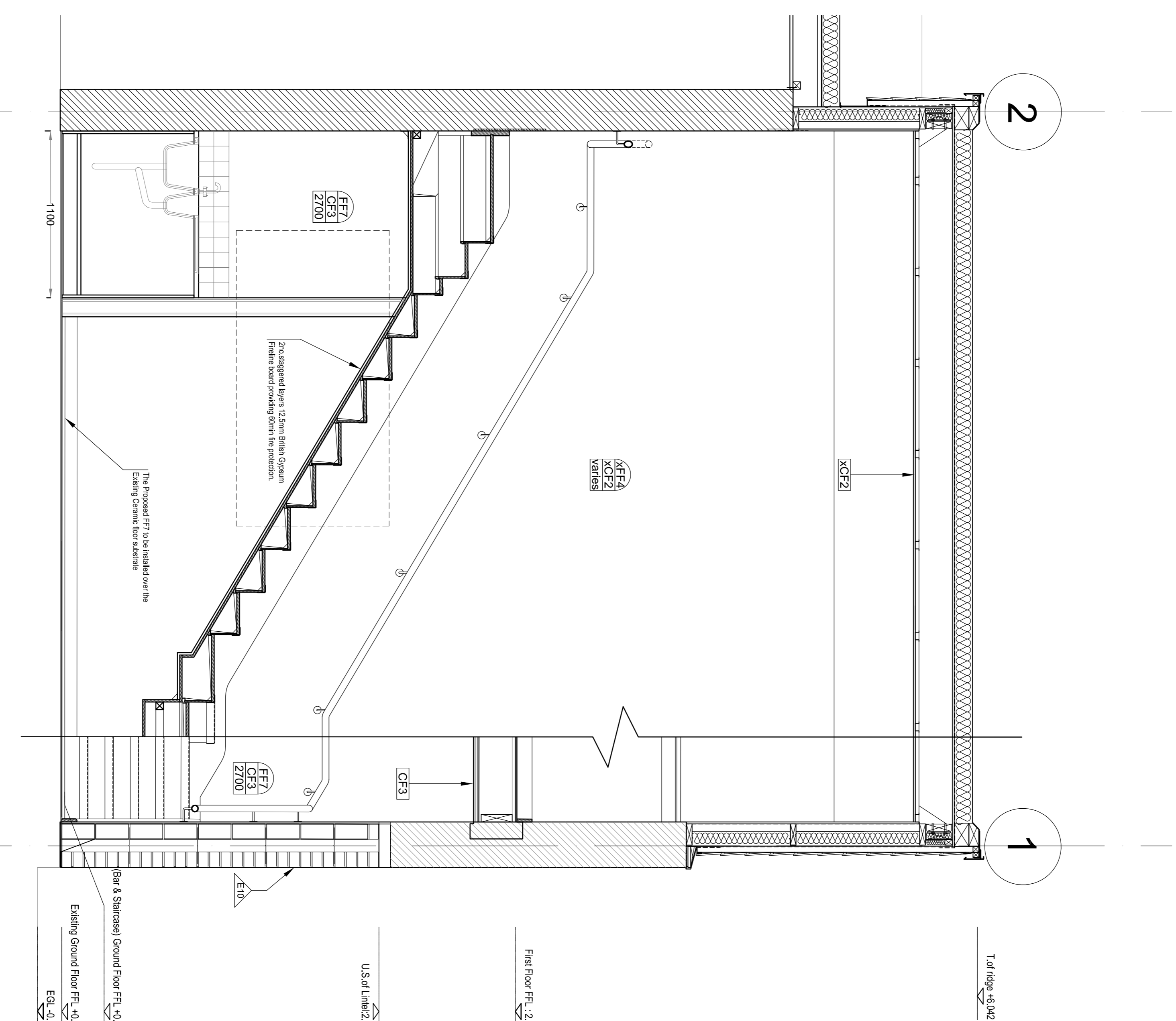
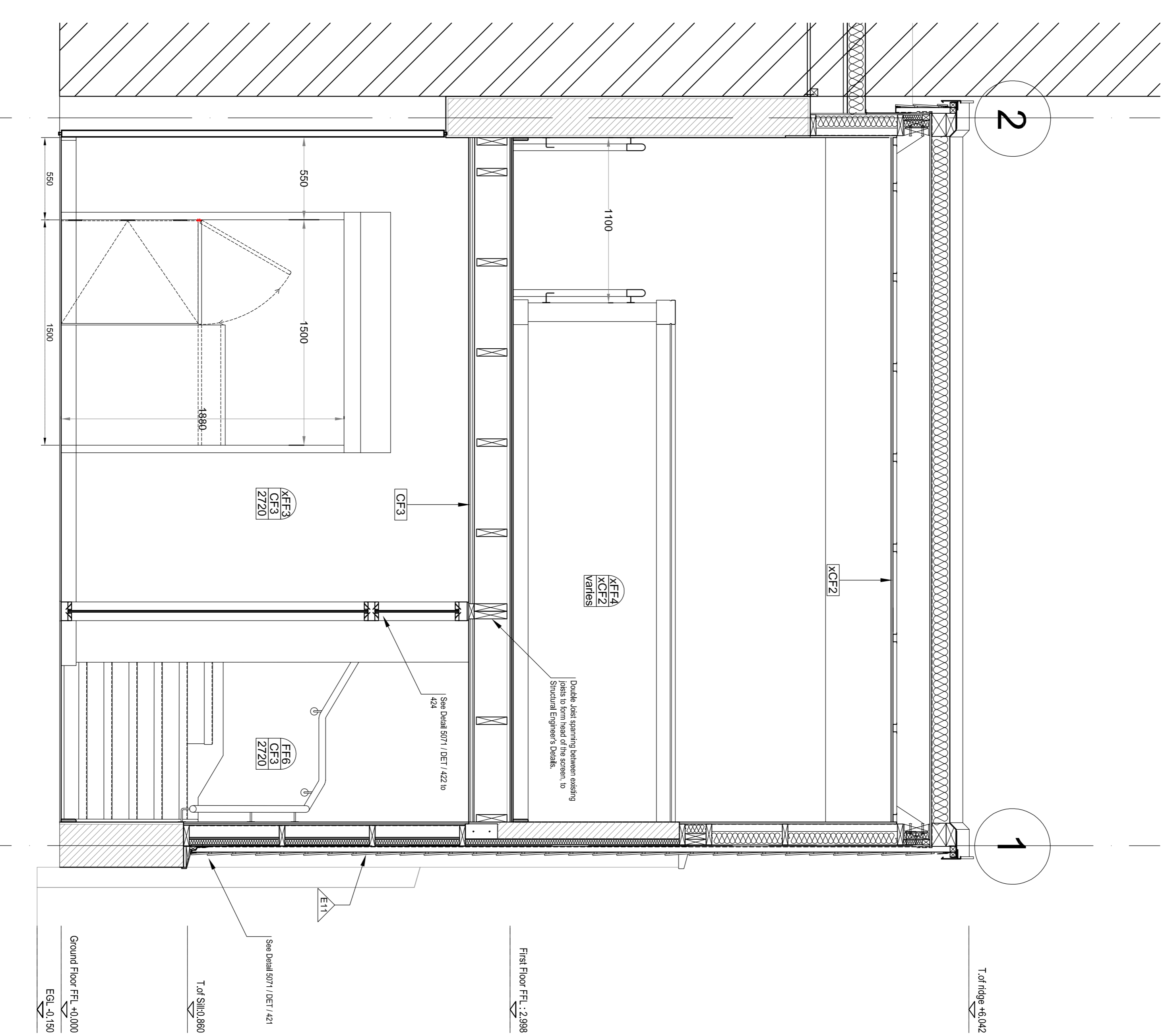
Any deviations from drawings please contact Architect

This drawing is copyright. All dimensions are to be verified by the contractor before commencing work.

Project: High Halsow Village Hall - Phase 3
Infills and Alterations

Clay Architecture Ltd
Great Lines Studio, Marlborough Road NE7 7RH
Tel: 01634 573 017 Fax: 01634 573 374
email: design@clayarchitects.com

Scale: 1:20
Date: 17/02/2015
Drawing No: 5071/GA/273
Revision: 00



1 New Section A
GA/273 120

2 New Section B
GA/273 120

