

BUILDING AND EXTERNAL FINISHES KEY

- ◁10 Concrete wall finish to 5071 / DET / 423.
- ◁E11 Cement weatherboarding to 5071 / DET / 421.

STRUCTURAL KEY

- ◁S1 To Structural Engineers drawings and recommendations.

INTERNAL WALL FINISH KEY

- ◁B1 12mm plaster with skim finish
- ◁B2 Whitecoat to full height of wall

INTERNAL PARTITION KEY

- ◁PA1 60 min, fire rated timber stud wall of gypboard thickness 125mm with 2 layers of M&B board and minimum stud size of 75x 38mm.
- ◁PA2 Fire rated Glazings to 5071 / DET / 422, 423 and 424

FLOOR FINISHES KEY

- ◁FF3 2.5 Allin Vinyl Terrace Slab (Vinyl) (grey) with concrete screed of equal approval.
- ◁FF6 Hardwood Birch/bleach entrance matting (grey) or equal approval.
- ◁FF7 Carpet finishes to be to Contractor's choice and Client's approval.
- ◁FF8 Existing Timber floor to be sanded and finished with bone wax to Architects specification.
- ◁FF9 Existing floor finish to be retained.

CEILING FINISHES KEY

- ◁CF3 Existing Gyproc Ceiling in the First Floor to be retained.
- ◁CF4 Existing Gyproc Ceiling in the First Floor to be retained.
- ◁CF2 Existing Gyproc Ceiling in the First Floor to be retained.

DOORS & WINDOWS

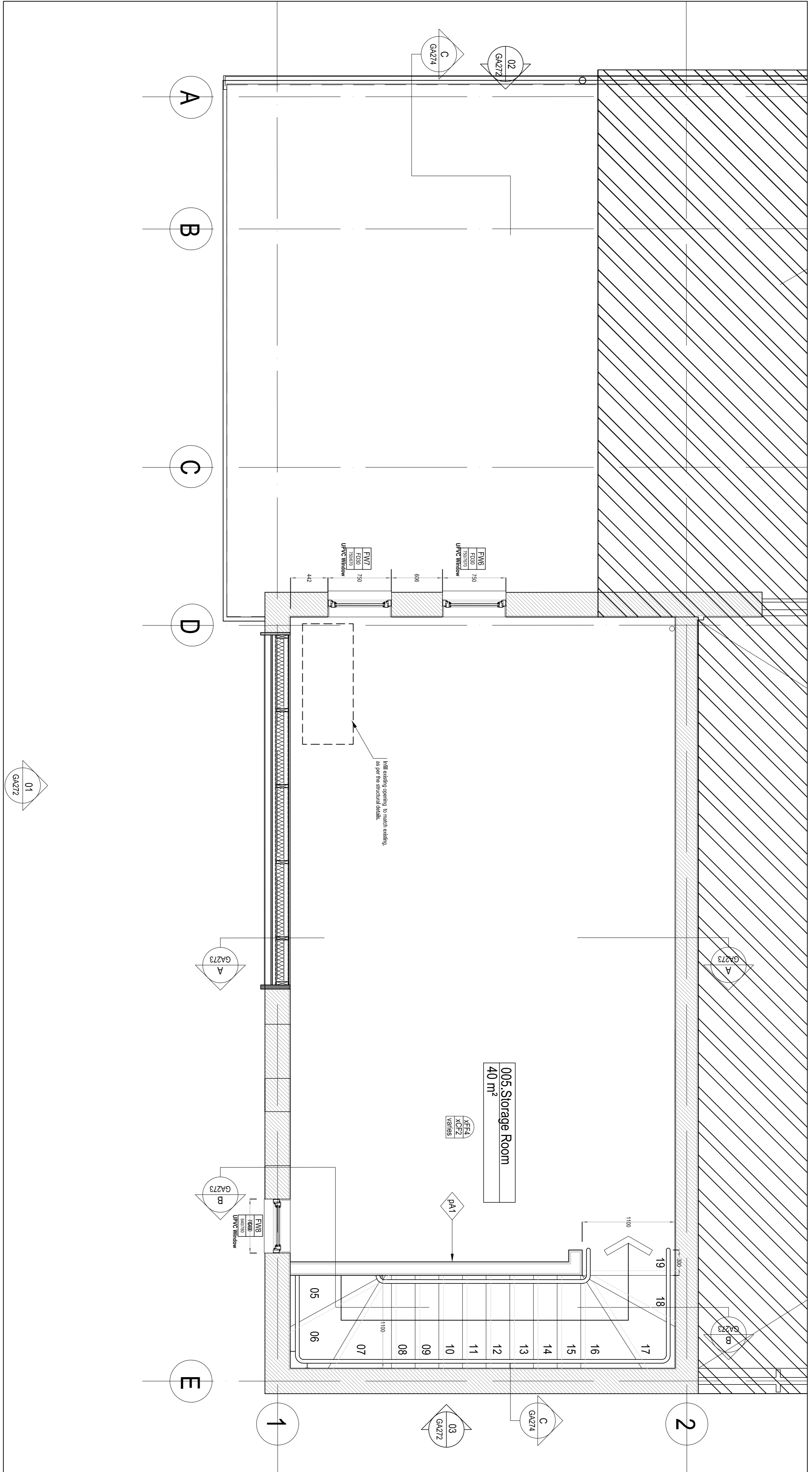
- ◁D17 Aluminium external door to 5071 / DET / 423 with 60 min fire rating.
- ◁D18 Aluminium internal door to 5071 / DET / 423 with 60 min fire rating.
- ◁D19 Aluminium internal door to 5071 / DET / 423 with 60 min fire rating.
- ◁D20 Aluminium internal door to 5071 / DET / 423 with 60 min fire rating.
- ◁D21 Aluminium internal door to 5071 / DET / 423 with 60 min fire rating.
- ◁D22 Aluminium internal door to 5071 / DET / 423 with 60 min fire rating.
- ◁D23 Aluminium internal door to 5071 / DET / 423 with 60 min fire rating.
- ◁D24 Aluminium internal door to 5071 / DET / 423 with 60 min fire rating.
- ◁D25 Aluminium internal door to 5071 / DET / 423 with 60 min fire rating.
- ◁D26 Aluminium internal door to 5071 / DET / 423 with 60 min fire rating.
- ◁D27 Aluminium internal door to 5071 / DET / 423 with 60 min fire rating.
- ◁D28 Aluminium internal door to 5071 / DET / 423 with 60 min fire rating.
- ◁D29 Aluminium internal door to 5071 / DET / 423 with 60 min fire rating.
- ◁D30 Aluminium internal door to 5071 / DET / 423 with 60 min fire rating.
- ◁D31 Aluminium internal door to 5071 / DET / 423 with 60 min fire rating.
- ◁D32 Aluminium internal door to 5071 / DET / 423 with 60 min fire rating.
- ◁D33 Aluminium internal door to 5071 / DET / 423 with 60 min fire rating.
- ◁D34 Aluminium internal door to 5071 / DET / 423 with 60 min fire rating.
- ◁D35 Aluminium internal door to 5071 / DET / 423 with 60 min fire rating.
- ◁D36 Aluminium internal door to 5071 / DET / 423 with 60 min fire rating.
- ◁D37 Aluminium internal door to 5071 / DET / 423 with 60 min fire rating.
- ◁D38 Aluminium internal door to 5071 / DET / 423 with 60 min fire rating.
- ◁D39 Aluminium internal door to 5071 / DET / 423 with 60 min fire rating.
- ◁D40 Aluminium internal door to 5071 / DET / 423 with 60 min fire rating.
- ◁D41 Aluminium internal door to 5071 / DET / 423 with 60 min fire rating.
- ◁D42 Aluminium internal door to 5071 / DET / 423 with 60 min fire rating.
- ◁D43 Aluminium internal door to 5071 / DET / 423 with 60 min fire rating.
- ◁D44 Aluminium internal door to 5071 / DET / 423 with 60 min fire rating.
- ◁D45 Aluminium internal door to 5071 / DET / 423 with 60 min fire rating.
- ◁D46 Aluminium internal door to 5071 / DET / 423 with 60 min fire rating.
- ◁D47 Aluminium internal door to 5071 / DET / 423 with 60 min fire rating.
- ◁D48 Aluminium internal door to 5071 / DET / 423 with 60 min fire rating.
- ◁D49 Aluminium internal door to 5071 / DET / 423 with 60 min fire rating.
- ◁D50 Aluminium internal door to 5071 / DET / 423 with 60 min fire rating.
- ◁D51 Aluminium internal door to 5071 / DET / 423 with 60 min fire rating.
- ◁D52 Aluminium internal door to 5071 / DET / 423 with 60 min fire rating.
- ◁D53 Aluminium internal door to 5071 / DET / 423 with 60 min fire rating.
- ◁D54 Aluminium internal door to 5071 / DET / 423 with 60 min fire rating.
- ◁D55 Aluminium internal door to 5071 / DET / 423 with 60 min fire rating.
- ◁D56 Aluminium internal door to 5071 / DET / 423 with 60 min fire rating.
- ◁D57 Aluminium internal door to 5071 / DET / 423 with 60 min fire rating.
- ◁D58 Aluminium internal door to 5071 / DET / 423 with 60 min fire rating.
- ◁D59 Aluminium internal door to 5071 / DET / 423 with 60 min fire rating.
- ◁D60 Aluminium internal door to 5071 / DET / 423 with 60 min fire rating.
- ◁D61 Aluminium internal door to 5071 / DET / 423 with 60 min fire rating.
- ◁D62 Aluminium internal door to 5071 / DET / 423 with 60 min fire rating.
- ◁D63 Aluminium internal door to 5071 / DET / 423 with 60 min fire rating.
- ◁D64 Aluminium internal door to 5071 / DET / 423 with 60 min fire rating.
- ◁D65 Aluminium internal door to 5071 / DET / 423 with 60 min fire rating.
- ◁D66 Aluminium internal door to 5071 / DET / 423 with 60 min fire rating.
- ◁D67 Aluminium internal door to 5071 / DET / 423 with 60 min fire rating.
- ◁D68 Aluminium internal door to 5071 / DET / 423 with 60 min fire rating.
- ◁D69 Aluminium internal door to 5071 / DET / 423 with 60 min fire rating.
- ◁D70 Aluminium internal door to 5071 / DET / 423 with 60 min fire rating.
- ◁D71 Aluminium internal door to 5071 / DET / 423 with 60 min fire rating.
- ◁D72 Aluminium internal door to 5071 / DET / 423 with 60 min fire rating.
- ◁D73 Aluminium internal door to 5071 / DET / 423 with 60 min fire rating.
- ◁D74 Aluminium internal door to 5071 / DET / 423 with 60 min fire rating.
- ◁D75 Aluminium internal door to 5071 / DET / 423 with 60 min fire rating.
- ◁D76 Aluminium internal door to 5071 / DET / 423 with 60 min fire rating.
- ◁D77 Aluminium internal door to 5071 / DET / 423 with 60 min fire rating.
- ◁D78 Aluminium internal door to 5071 / DET / 423 with 60 min fire rating.
- ◁D79 Aluminium internal door to 5071 / DET / 423 with 60 min fire rating.
- ◁D80 Aluminium internal door to 5071 / DET / 423 with 60 min fire rating.
- ◁D81 Aluminium internal door to 5071 / DET / 423 with 60 min fire rating.
- ◁D82 Aluminium internal door to 5071 / DET / 423 with 60 min fire rating.
- ◁D83 Aluminium internal door to 5071 / DET / 423 with 60 min fire rating.
- ◁D84 Aluminium internal door to 5071 / DET / 423 with 60 min fire rating.
- ◁D85 Aluminium internal door to 5071 / DET / 423 with 60 min fire rating.
- ◁D86 Aluminium internal door to 5071 / DET / 423 with 60 min fire rating.
- ◁D87 Aluminium internal door to 5071 / DET / 423 with 60 min fire rating.
- ◁D88 Aluminium internal door to 5071 / DET / 423 with 60 min fire rating.
- ◁D89 Aluminium internal door to 5071 / DET / 423 with 60 min fire rating.
- ◁D90 Aluminium internal door to 5071 / DET / 423 with 60 min fire rating.
- ◁D91 Aluminium internal door to 5071 / DET / 423 with 60 min fire rating.
- ◁D92 Aluminium internal door to 5071 / DET / 423 with 60 min fire rating.
- ◁D93 Aluminium internal door to 5071 / DET / 423 with 60 min fire rating.
- ◁D94 Aluminium internal door to 5071 / DET / 423 with 60 min fire rating.
- ◁D95 Aluminium internal door to 5071 / DET / 423 with 60 min fire rating.
- ◁D96 Aluminium internal door to 5071 / DET / 423 with 60 min fire rating.
- ◁D97 Aluminium internal door to 5071 / DET / 423 with 60 min fire rating.
- ◁D98 Aluminium internal door to 5071 / DET / 423 with 60 min fire rating.
- ◁D99 Aluminium internal door to 5071 / DET / 423 with 60 min fire rating.
- ◁D100 Aluminium internal door to 5071 / DET / 423 with 60 min fire rating.

Note: Fire finishes to be checked to the client and Fire officer's approval.

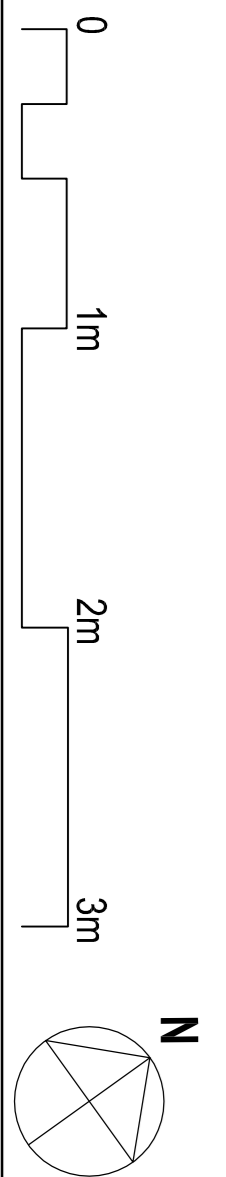
Any deviations from drawings please contact Architect

FOR TENDER
ISSUE DATE: 17/02/15

Gray Architecture Ltd
17/02/2015



1 New First Floor Plan
GAZ71 1:25



Scale 1:25
Date 17/02/2015
Drawn SR
Revised
Authorised
00

Gray Architecture Ltd
17/02/2015

General Arrangement
New First Floor Plan
Drawing No. 5071GAZ71